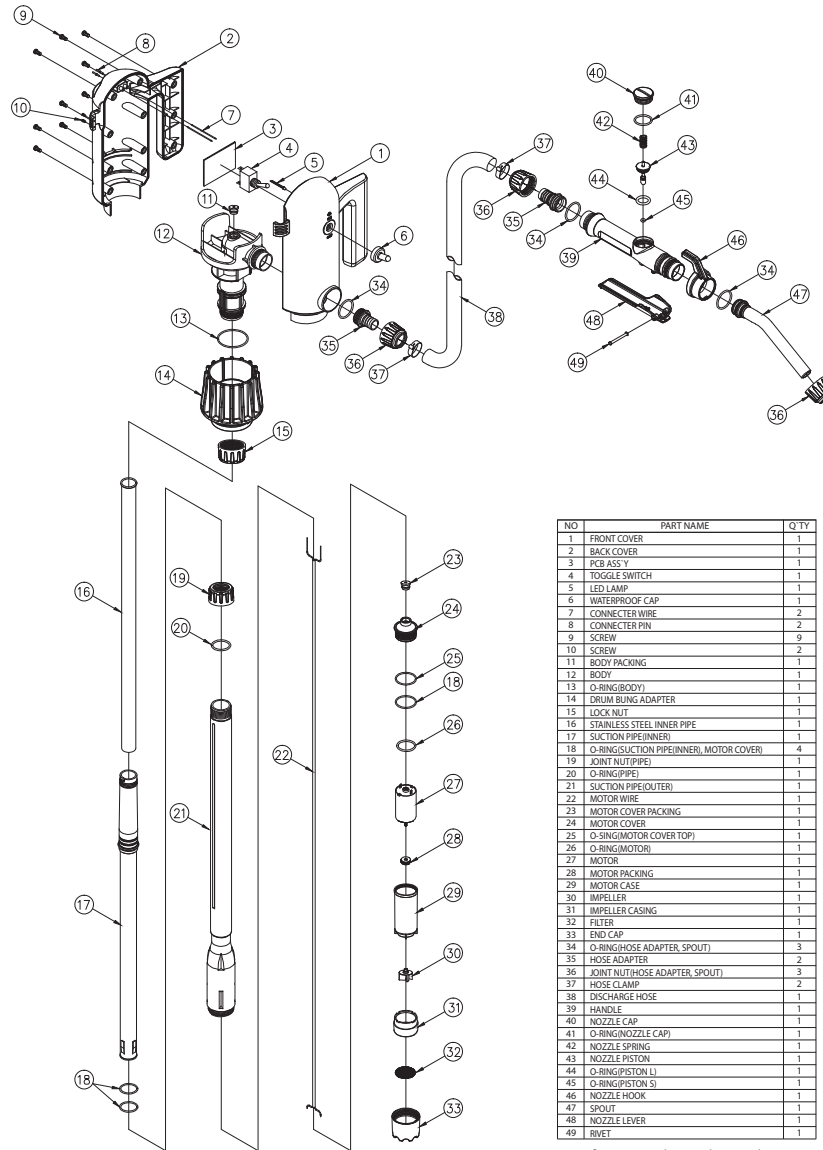


ASSEMBLY DIAGRAM



NO	PART NAME	QTY
1	FRONT COVER	1
2	BACK COVER	1
3	PCB ASSY	1
4	TOGGLE SWITCH	1
5	LED LAMP	1
6	WATERPROOF CAP	1
7	CONNECTER WIRE	2
8	CONNECTER PIN	2
9	SCREW	9
10	SCREW	2
11	BODY PACKING	1
12	BODY	1
13	O-RING(BODY)	1
14	DRUM BUNG ADAPTER	1
15	LOCK NUT	1
16	STAINLESS STEEL INNER PIPE	1
17	SUCTION PIPE(INNER)	1
18	O-RING(SUCTION PIPE(INNER), MOTOR COVER)	4
19	JOINT NUT(PIPE)	1
20	O-RING(PIPE)	1
21	SUCTION PIPE(OUTER)	1
22	MOTOR WIRE	1
23	MOTOR COVER PACKING	1
24	MOTOR COVER	1
25	O-RING(MOTOR COVER TOP)	1
26	O-RING(MOTOR)	1
27	MOTOR	1
28	MOTOR PACKING	1
29	MOTOR CASE	1
30	IMPELLER	1
31	IMPELLER CASING	1
32	FILTER	1
33	END CAP	1
34	O-RING(HOSE ADAPTER, SPOUT)	3
35	HOSE ADAPTER	2
36	JOINT NUT(HOSE ADAPTER, SPOUT)	3
37	HOSE CLAMP	2
38	DISCHARGE HOSE	1
39	HANDLE	1
40	NOZZLE CAP	1
41	O-RING(NOZZLE CAP)	1
42	NOZZLE SPRING	1
43	NOZZLE PISTON	1
44	O-RING(PISTON L)	1
45	O-RING(PISTON S)	1
46	NOZZLE HOOK	1
47	SPOUT	1
48	NOZZLE LEVER	1
49	RIVET	1

• Specifications are subject to change without notice.