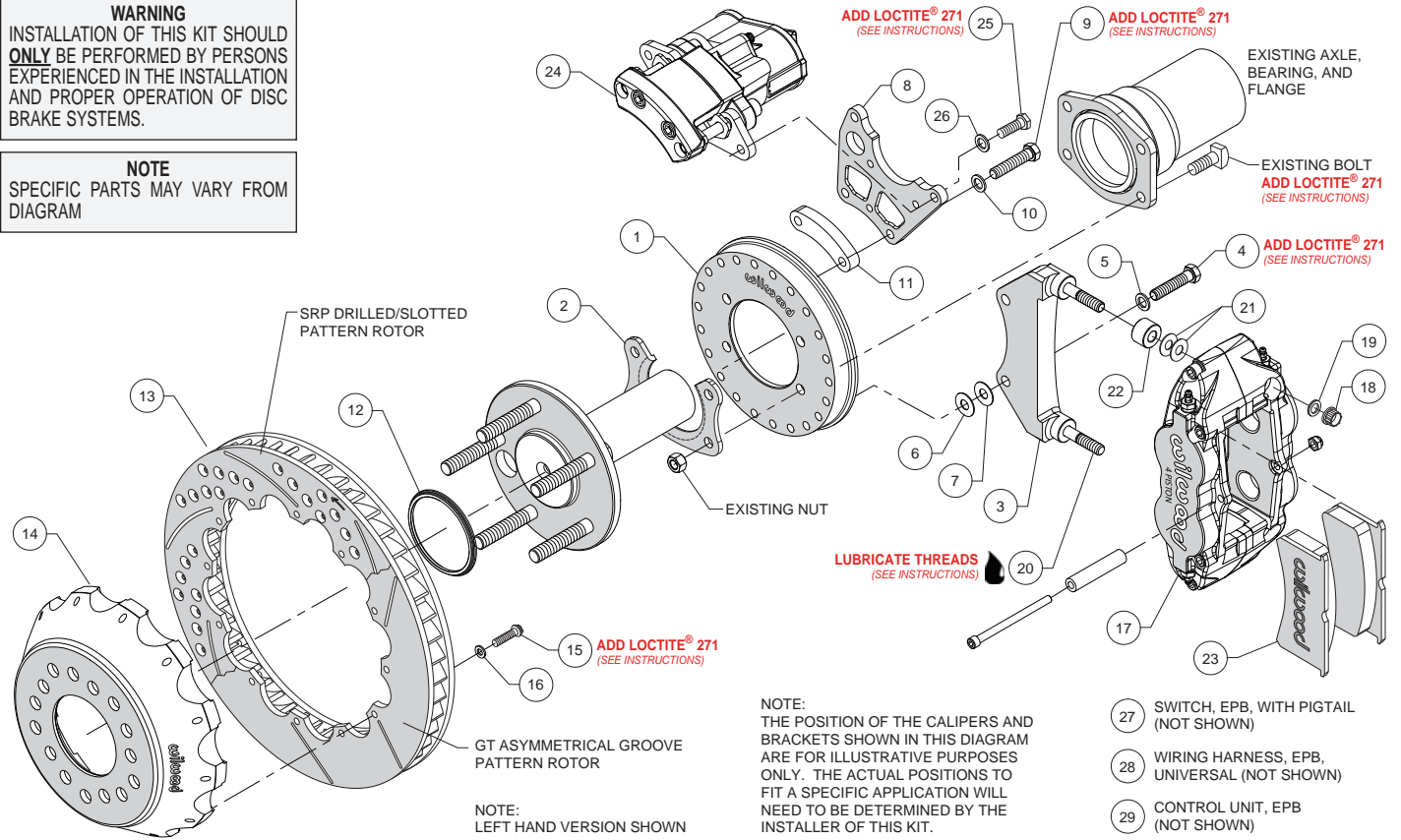


Parts Breakdown 140-15845-R

WARNING
INSTALLATION OF THIS KIT SHOULD **ONLY** BE PERFORMED BY PERSONS EXPERIENCED IN THE INSTALLATION AND PROPER OPERATION OF DISC BRAKE SYSTEMS.

NOTE
SPECIFIC PARTS MAY VARY FROM DIAGRAM



| ITEM NO. | PART NO. | DESCRIPTION | QTY |
|----------|-----------------|---|-----|
| 1 | 250-15858 | Backing Plate, 2.50 Offset (for kit 140-15845) | 2 |
| 1 | 250-16157 | Backing Plate, 2.36 Offset (for kit 140-16132) | 2 |
| 2 | 250-11223 | Retainer, Bearing | 2 |
| 3 | 250-15853 | Bracket, Mounting, Service Caliper | 2 |
| 4 | 230-10022 | Bolt, 3/8-16 x 1.50 Long, Hex Head | 4 |
| 5 | 240-10190 | Washer, .391 I.D. x .625 O.D. x .063 Thick | 4 |
| 6 | 240-1159 | Shim, .035 Thick | 16 |
| 7 | 240-10306 | Shim, .016 Thick | 4 |
| 8 | 250-15852 | Bracket, Mounting, EPB Caliper | 2 |
| 9 | 230-10331 | Bolt, 3/8-16 x 1.75 Long, Hex Head | 4 |
| 10 | 240-10190 | Washer, .391 I.D. x .625 O.D. x .063 Thick | 4 |
| 11 | 300-16065 | Spacer, .525 Long | 2 |
| 12 | 300-11337 | Adapter, Rotor Registration | 2 |
| 13 | 160-8402/03 | Rotor, GT, 1.10" x 14.00" Dia, 12 x 8.75" Bolt Circle (right and left) | 2 |
| 13A | 160-8400/01-BK | Rotor, Black, SRP Drilled/Slotted (right and left) | 2 |
| 14 | 170-15860 | Hat, 5 x 4.50/4.75/5.00, 2.035 Offset, 12 x 8.75" Bolt Circle (for kit 140-15845) | 2 |
| 14 | 170-15859 | Hat, 5 x 4.50/4.75/5.00, 1.625 Offset, 12 x 8.75" Bolt Circle (for kit 140-16132) | 2 |
| 15 | 230-8037 | Bolt, 1/4-20 x .75 Long, 12 Point | 24 |
| 16 | 240-11240 | Washer, .265 I.D. x .500 O.D. x .063 Thick | 24 |
| 17 | 120-11782-BK | Caliper, Forged Superlite, Black | 2 |
| 17A | 120-11782-RD | Caliper, Forged Superlite, Red | 2 |
| 18 | 230-9183 | Nut, 3/8-24, Self-Locking, 12 Point | 4 |
| 19 | 240-10190 | Washer, .391 I.D. x .625 O.D. x .063 Thick | 4 |
| 20 | 230-9079 | Stud, 3/8-16 x 3/8-24 x 3.15 Long (pre installed in bracket) | 2 |
| 21 | 240-1159 | Shim, .035 Thick | 16 |
| 22 | 300-7392 | Spacer, .573 Long | 4 |
| 23 | 150-8855K | Pad, BP-10 Compound, Axle Set | 1 |
| 24 | 120-15702/03-BK | Caliper, EPB, Black (right and left hand) | 2 |
| 24A | 120-15702/03-RD | Caliper, EPB, Red (right and left hand) | 2 |
| 25 | 230-15836 | Bolt, 3/8-24 x .875 Long, Hex Head | 4 |
| 26 | 240-10190 | Washer, .391 I.D. x .625 O.D. x .063 Thick | 4 |
| 27 | 300-15936 | Switch, EPB, with Pigtail (not shown) | 1 |
| 28 | 610-15588 | EPB Wiring Harness, Universal (not shown) | 1 |
| 29 | 620-15487 | EPB Control Unit (not shown) | 1 |

NOTES: Part Number 230-8008, Rotor Bolt Kit, includes P/N's 230-8037 and 240-11240
 Part Number 230-10312, Superlite Caliper Bracket Mounting Bolt Kit, includes P/N's 230-10022, 240-1159, 240-10190 & 240-10306
 Part Number 230-15861, EPB Caliper Mounting Bolt Kit, includes P/N's 230-15836 and 240-10190
 Part Number 230-15862, EPB Caliper Bracket Mounting Bolt Kit, includes P/N's 230-10331, 240-10190 and 300-16065
 Part Number 250-15855, Superlite Caliper Bracket Kit, includes P/N's 230-9079, 230-9183, 240-1159, 240-10190, 250-15853 & 300-7392
 Item 13A is an optional item and is included in the "D" drilled rotor kits. Add "-D" to end of part number when ordering.
 Items 17A and 24A are optional items and included in the "-R" red caliper kits. Add "-R" to end of part number when ordering.

Important Notice - Read This First

Before any tear-down or disassembly begins, review the following information:

- **Warning:** *This electronic parking brake system is intended to function as a parking brake and not as an emergency stop brake. However, it is possible to actuate the EPB at any time and speed. Actuating the EPB while the vehicle is moving may cause the rear wheels to lock up and skid which may lead to a reduction in vehicle control.*
- Review the Wheel Clearance Diagram (Figure 3A or 3B, page 4) to verify that there is adequate clearance with the wheels you will be using with the installation.
- For the Electronic Parking Brake wiring instructions, see DS-1353 included with this kit, or download at www.wilwood.com/PDF/DataSheet/ds1353.pdf
- This brake kit is not supplied with hydraulic lines or fittings and may require the purchase of additional lines or fittings to complete the installation. Wilwood offers an extensive listing of brake lines and fittings on our web site: www.wilwood.com.
- Due to OEM production differences and other variations from vehicle to vehicle, the fastener hardware and other components in this kit may not be suitable for a specific application or vehicle.
- It is the responsibility of the purchaser and installer of this kit to verify suitability / fitment of all components and ensure all fasteners and hardware achieve complete and proper engagement. Improper or inadequate engagement can lead to component failure.

Photographic Tip

Important and highly recommended: Take photos of brake system before disassembly and during the disassembly process. In the event, trouble-shooting photos can be life savers. Many vehicles have undocumented variations, photos will make it much simpler for Wilwood to assist you if you have a problem.

Parts List

| ITEM NO. | PART NO. | DESCRIPTION | QTY |
|----------|-----------------|--|-----|
| 1 | 250-15858 | Backing Plate, 2.50 Offset (for kit 140-15845) | 2 |
| 1 | 250-16157 | Backing Plate, 2.36 Offset (for kit 140-16132) | 2 |
| 2 | 250-11223 | Retainer, Bearing | 2 |
| 3 | 250-15853 | Bracket, Mounting, Service Caliper | 2 |
| 4 | 230-10022 | Bolt, 3/8-16 x 1.50 Long, Hex Head | 4 |
| 5 | 240-10190 | Washer, .391 I.D. x .625 O.D. x .063 Thick | 4 |
| 6 | 240-1159 | Shim, .035 Thick | 16 |
| 7 | 240-10306 | Shim, .016 Thick | 4 |
| 8 | 250-15852 | Bracket, Mounting, EPB Caliper | 2 |
| 9 | 230-10331 | Bolt, 3/8-16 x 1.75 Long, Hex Head | 4 |
| 10 | 240-10190 | Washer, .391 I.D. x .625 O.D. x .063 Thick | 4 |
| 11 | 300-16065 | Spacer, .525 Long | 2 |
| 12 | 300-11337 | Adapter, Rotor Registration | 2 |
| 13 | 160-8402/03 | Rotor, GT, 1.10" x 14.00" Dia, 12 x 8.75" Bolt Circle (right and left) | 2 |
| 13A | 160-8400/01-BK | Rotor, Black, SRP Drilled/Slotted (right and left) | 2 |
| 14 | 170-15860 | Hat, 5 x 4.50/4.75/5.00, 2.035 Offset, 12 x 8.75" Bolt Circle (for kit 140-15845) | 2 |
| 14 | 170-15859 | Hat, 5 x 4.50/4.75/5.00, 1.625 Offset, 12 x 8.75" Bolt Circle (for kit 140-16132) | 2 |
| 15 | 230-8037 | Bolt, 1/4-20 x .75 Long, 12 Point | 24 |
| 16 | 240-11240 | Washer, .265 I.D. x .500 O.D. x .063 Thick | 24 |
| 17 | 120-11782-BK | Caliper, Forged Superlite, Black | 2 |
| 17A | 120-11782-RD | Caliper, Forged Superlite, Red | 2 |
| 18 | 230-9183 | Nut, 3/8-24, Self-Locking, 12 Point | 4 |
| 19 | 240-10190 | Washer, .391 I.D. x .625 O.D. x .063 Thick | 4 |
| 20 | 230-9079 | Stud, 3/8-16 x 3/8-24 x 3.15 Long (pre installed in bracket) | 2 |
| 21 | 240-1159 | Shim, .035 Thick | 16 |
| 22 | 300-7392 | Spacer, .573 Long | 4 |
| 23 | 150-8855K | Pad, BP-10 Compound, Axle Set | 1 |
| 24 | 120-15702/03-BK | Caliper, EPB, Black (right and left hand) | 2 |
| 24A | 120-15702/03-RD | Caliper, EPB, Red (right and left hand) | 2 |
| 25 | 230-15836 | Bolt, 3/8-24 x .875 Long, Hex Head | 4 |
| 26 | 240-10190 | Washer, .391 I.D. x .625 O.D. x .063 Thick | 4 |
| 27 | 300-15936 | Switch, EPB, with Pigtail (not shown) | 1 |
| 28 | 610-15588 | EPB Wiring Harness, Universal (not shown) | 1 |
| 29 | 620-15487 | EPB Control Unit (not shown) | 1 |

NOTES: Part Number 230-8008, Rotor Bolt Kit, includes P/N's 230-8037 and 240-11240
 Part Number 230-10312, Superlite Caliper Bracket Mounting Bolt Kit, includes P/N's 230-10022, 240-1159, 240-10190 & 240-10306
 Part Number 230-15861, EPB Caliper Mounting Bolt Kit, includes P/N's 230-15836 and 240-10190
 Part Number 230-15862, EPB Caliper Bracket Mounting Bolt Kit, includes P/N's 230-10331, 240-10190 and 300-16065
 Part Number 250-15855, Superlite Caliper Bracket Kit, includes P/N's 230-9079, 230-9183, 240-1159, 240-10190, 250-15853 & 300-7392
 Item 13A is an optional item and is included in the "-D" drilled rotor kits. Add "-D" to end of part number when ordering.
 Items 17A and 24A are optional items and included in the "-R" red caliper kits. Add "-R" to end of part number when ordering.