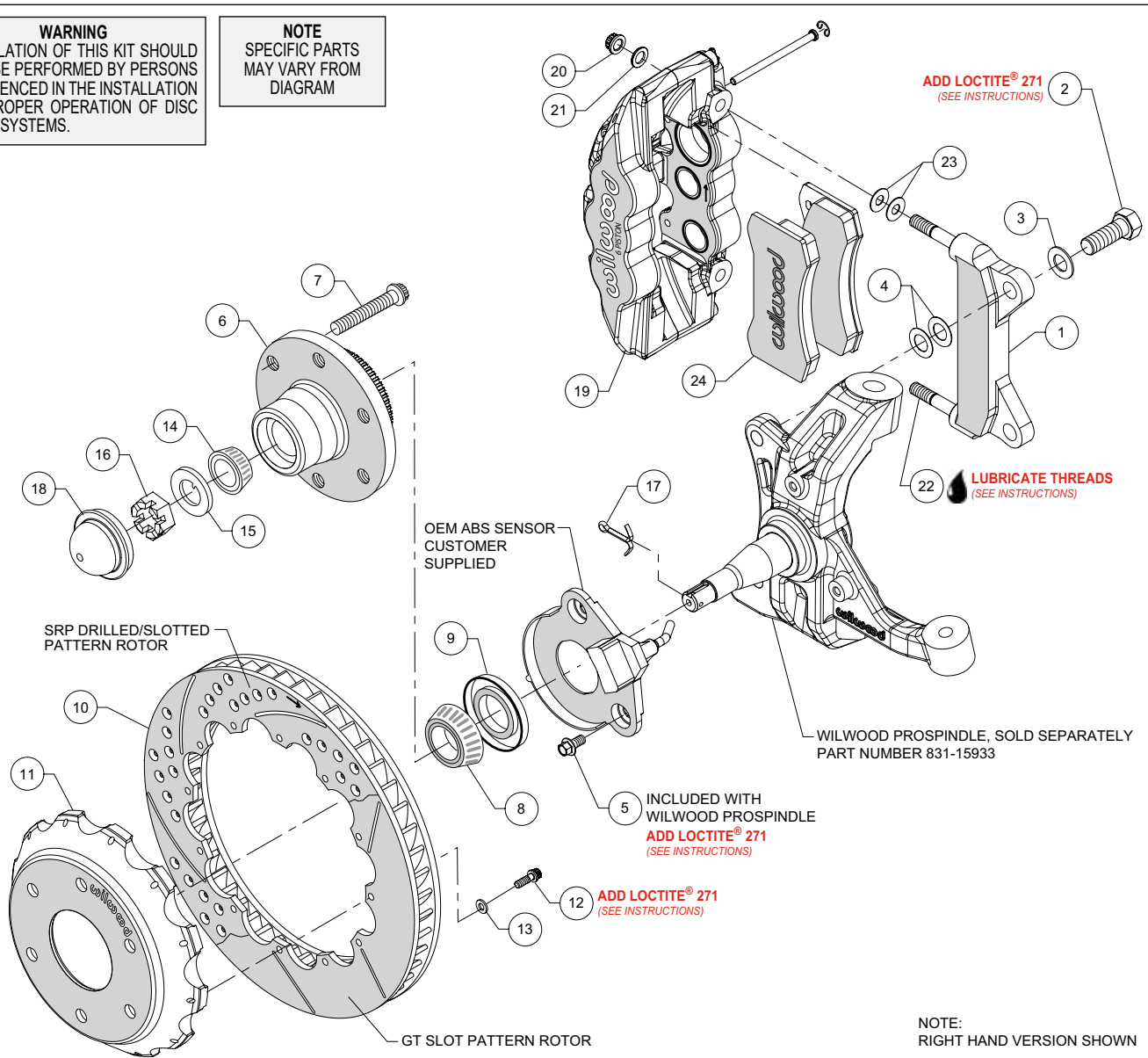


Exploded Assembly Diagram

WARNING
 INSTALLATION OF THIS KIT SHOULD **ONLY** BE PERFORMED BY PERSONS EXPERIENCED IN THE INSTALLATION AND PROPER OPERATION OF DISC BRAKE SYSTEMS.

NOTE
 SPECIFIC PARTS MAY VARY FROM DIAGRAM



Parts List

| <u>ITEM NO.</u> | <u>PART NO.</u> | <u>DESCRIPTION</u> | <u>QTY</u> |
|-----------------|-----------------|--|------------|
| 1 | 250-14213 | Bracket, Caliper Mounting | 2 |
| 2 | 230-14217 | Bolt, 5/8-18 x 1.50" Long, Hex Head | 4 |
| 3 | 240-11856 | Washer, .640" I.D. x 1.188" O.D. x .063" Thick | 4 |
| 4 | 240-9074 | Shim, .024" Thick | 12 |
| 5 | 230-15934 | Bolt, M8-1.25 x 16mm Long, Flanged Hex Head | 4 |
| 6 | 270-15792 | Hub | 2 |
| 7 | 230-6959 | Studs, Wheel | 12 |
| 8 | 370-2609 | Cone, Inner Bearing | 2 |
| 9 | 380-10792 | Seal, Grease | 2 |
| 10 | 160-8398/99 | Rotor, GT 1.25" Thk x 14.00" Dia, 12 x 8.75" Bolt Circle, (one each, right and left) | 2 |
| 10A | 160-8396/97-BK | Rotor, SRP Drilled and Slotted (one each, right and left) | 2 |
| 11 | 170-15937 | Hat, 6 x 5.50, 1.38" offset, 12 x 8.75" Bolt Circle | 2 |
| 12 | 230-8037 | Bolt, 1/4-20 x .750" Long, 12 Point | 24 |
| 13 | 230-11240 | Washer, .265" I.D. x .500" O.D. x .063" Thick | 24 |
| 14 | 370-9542 | Cone, Outer Bearing | 2 |
| 15 | 240-15900 | Washer, Spindle, 3/4" | 2 |
| 16 | 230-15901 | Nut, Spindle, 3/4-16 | 2 |
| 17 | 180-15902 | Cotter Pin, Spindle | 2 |
| 18 | 270-15891 | Cap, Dust | 2 |
| 19 | 120-13293/94-BK | Caliper, Aerolite 6R, Black (one each, right and left) | 2 |
| 19A | 120-13293/94-RD | Caliper, Aerolite 6R, Red (one each, right and left) | 2 |
| 20 | 230-9182 | Nut, 7/16-20, Self-Locking, Hex Head | 4 |
| 21 | 240-11101 | Washer, .453" I.D. x .750" O.D. x .063" Thick | 4 |
| 22 | 230-13776 | Stud, 7/16-14 x 7/16-20 x 2.875" Long (pre installed in bracket) | 4 |
| 23 | 240-1848 | Shim, .030" Thick | 12 |
| 24 | 150-9489K | Pad, BP-20 Compound, Axle Set | 1 |
| 24A | 150-9488K | Pad, BP-10 Compound, Axle Set | 1 |

NOTES: P/N 230-8008 Rotor Bolt Kit, includes part numbers 230-8037 and 240-11240

P/N 230-15997 Bolt Kit, Wheel Studs, includes part number 230-6959

P/N 230-15935 Bolt Kit (included with the ProSpindle kit), ABS Sensor, includes part number 230-15934

P/N 250-14214 Caliper Bracket Kit, includes P/N's 230-13776, 230-9182, 230-14217, 240-1848, 240-9074, 240-11101, 240-11856 and 250-14213

P/N 370-10763 Lock Nut Kit, includes part numbers 180-15902, 230-15901, 240-15900 and 270-15891

Item 10A is an optional item and included with the "-D" drilled rotor kits.

Add "-D" to end of part number when ordering.

Item 19A is an optional item and included with the "-R" red caliper kits.

Add "-R" to end of part number when ordering.

Item 24A is included in the (D) drilled rotor and (DR) drilled rotor with red caliper kits only.