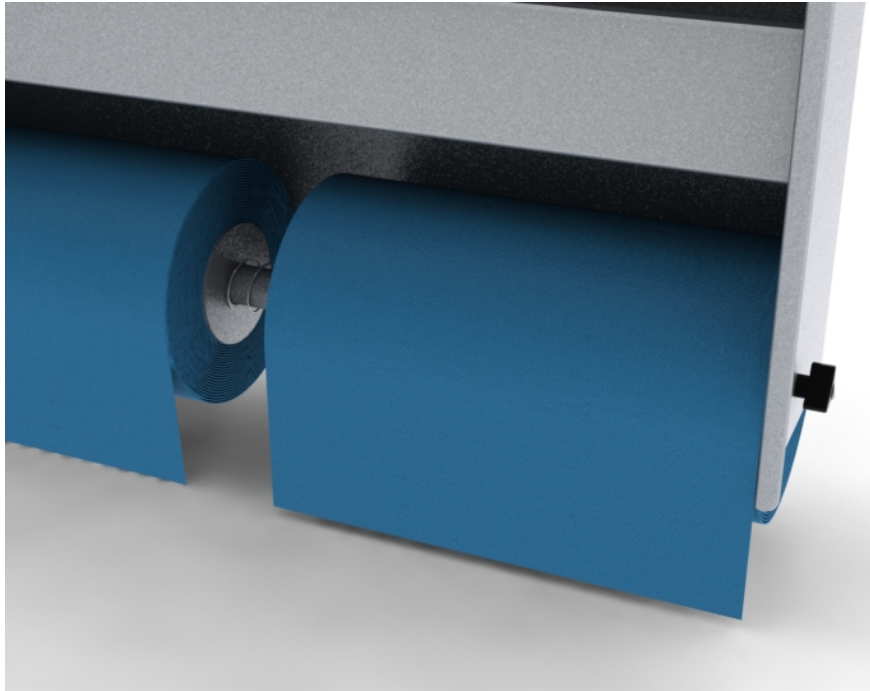


## ***Installation Instructions for 80330 Trailer Cabinet***

### **Installation Instructions for Towel Rod:**

1. Holding the towel rod at one end install one paper towel roll, one large washer, tension spring, the second large washer and one paper towel roll in this order.
2. Install the towel rod between the sides of the cabinet at the lowest most mounting holes using the two 1/4"-20 three prong knobs to secure it to the cabinet.



### **Installation Instructions for Snap Pin:**

1. Pull snap pin plunger out and turn until it locks open.
2. Install snap pin into bottom hole on desire side of trailer cabinet positioning the snap pin to the outside of the cabinet.
3. Tighten by the ferrule only using a small amount of Loctite.

