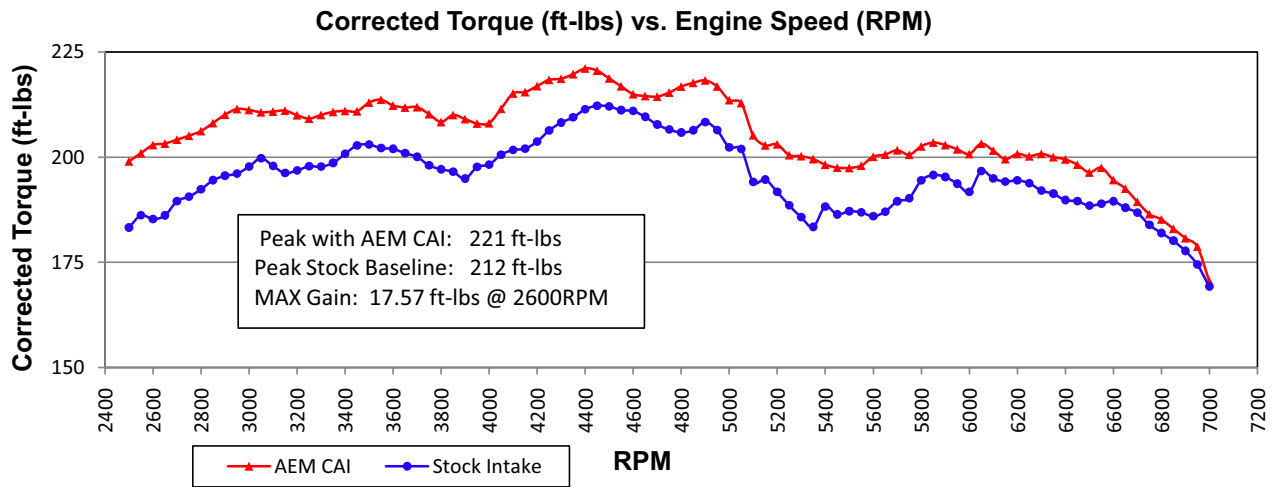
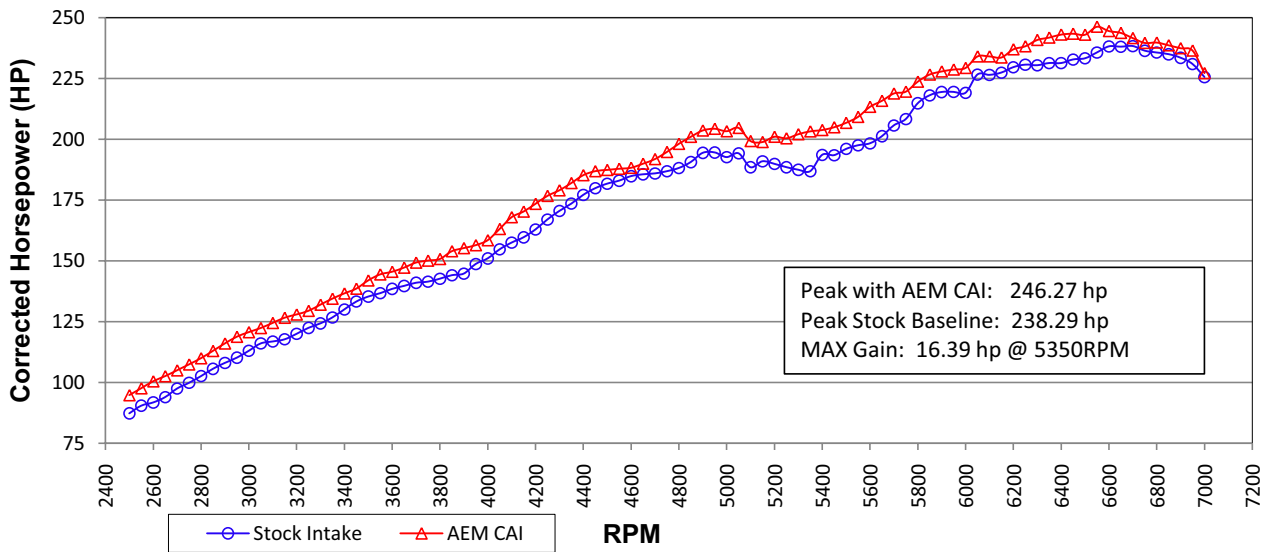




**2010 Chevrolet 3.6L V6 Camaro
AEM 21-8028 Cold Air Intake
Corrected Horsepower (HP) vs. Engine Speed (RPM)**



Run Title: Stock 2010 Chevrolet 3.6L V6 Camaro 01/15/2010
 Run Notes: Averaged baseline 3rd gear runs
 Stock: 87.59 °F, 30.38 in-Hg, SAE: 0.97, Relative Humidity: 4 %

Run Title: AEM 2010 Chevrolet 3.6L V6 Camaro 01/15/2010
 Run Notes: Averaged AEM 21-8028 CAI installed 3rd gear runs
 AEM: 79.83 °F 30.45 in-Hg, SAE: 0.96, Relative Humidity: 4 %