



Equipped with AEM DRYFLOW Filter  
No Oil Required!

**Kit Part Number: 21-682**

2008 Chevrolet Cobalt SS

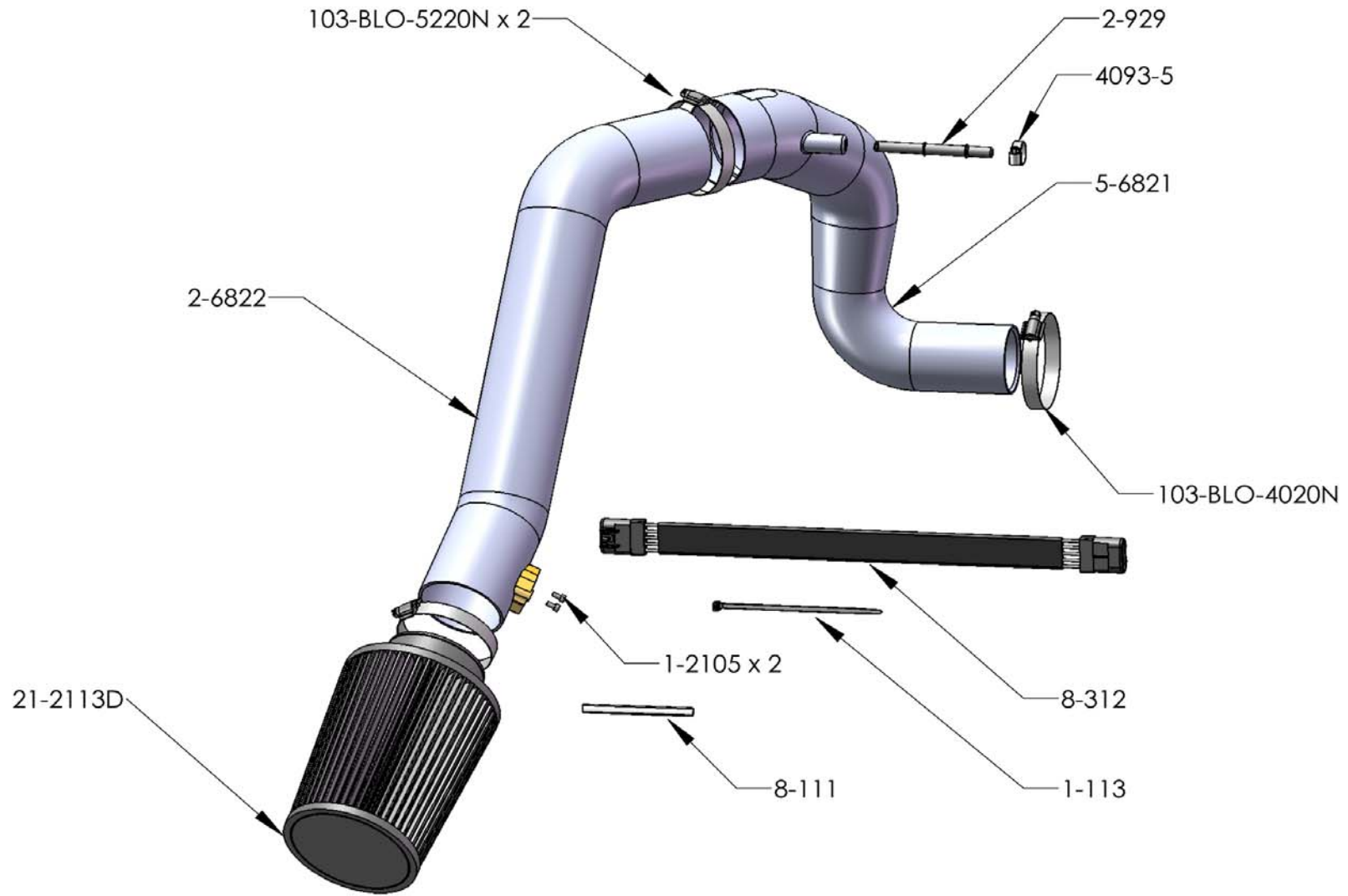
CARB EO - ♦

♦ Legal in California only for racing vehicles which may never be used upon a highway.

© 2008, Advanced Engine Management, Inc. AEM is a registered trademark of Advanced Engine Management, Inc. All rights reserved.



Advanced Engine Management Inc.  
2205 126<sup>th</sup> Street, Unit A  
Hawthorne, CA 90250  
Phone: 310.484.2322  
<http://www.aempower.com>



## Bill of Materials

Quantity	Part Number	Part Description
1	2-6822	INLET PIPE, 08 CHEVY COBALT SS
1	5-6821	HOSE,ADAPTER COBALT SS
1	103-BLO-4020N	# 40 HOSE CLAMP
2	103-BLO-5220N	#52 HOSE CLAMP
1	21-2113D	A/F ASSY 3.25 X 7" DRYFLOW
2	1-2105	BOLT,SOCKET M4-.7 X 8MM
1	8-312	CABLE, MAF EXTENSION HITACHI
1	2-929	NIPPLE,CHEVY COBALT SS
2	10-922S	DECAL,AEM LARGE SILVER
20	8-111	RUBBER EDGE TRIM
1	4093-5	HOSE CLAMP,3/4"
1	1-113	ZIP TIE,6 LONG

## 1. Preparing Vehicle

- a) Make sure vehicle is parked on a level surface.
- b) Set parking brake.
- c) If engine has run in the past two hours let it cool down.
- d) Disconnect the negative battery terminal.
- e) Do not discard stock components after removal of the factory system.

## 2. Removal of Stock System



a) Stock intake installed



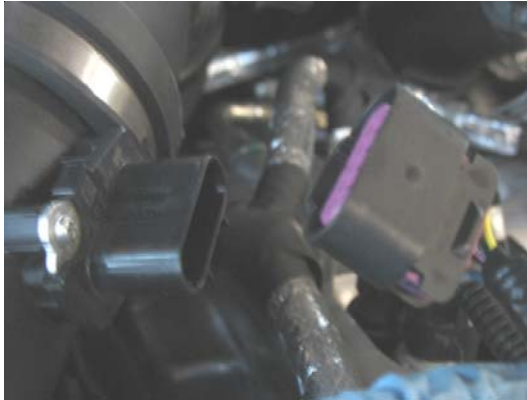
b) Remove the two 10mm nuts on the air box panel.



c) Disconnect the PCV line from the intake tube by pressing the clip and pushing back.



d) Remove the locking clip on the MAF sensor harness by pressing the clip with a small flathead screwdriver.



e) Unplug the MAF sensor connector.



f) Remove the MAF sensor with a Philips screwdriver.



g) Using an 8mm nut driver, loosen the hose clamp on the circled area.



h) Remove the lower bolt holding the air box panel with a Torx T30 bit.



i) Remove air box panel from engine bay.



j) Loosen the t-bolt clamp in the direction as indicated in the photo.



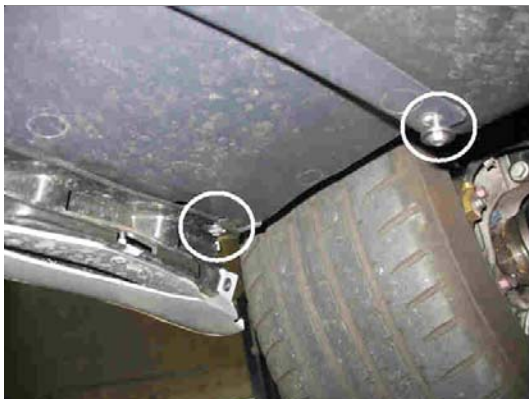
k) Using an 8mm nut driver and universal joint, remove the hose clamp holding compressor inlet tube and remove from compressor.



l) Remove the passenger side front wheel with a 19mm socket.



m) Remove the 7mm bolts and push clip in the right side wheel well.



n) Remove the additional 7mm bolts and push clips on the corresponding bottom section.



o) Locate the lower air induction pipe and remove the retaining clip on the top section with a flathead screwdriver.



p) Remove the remaining lower 10mm bolt near the bottom of the air induction pipe.

### 3. Installation of Cold Air Intake System.

- a) When installing the intake system , DO NOT completely tighten the hose clamps or mounting tab hardware until instructed to do so.



b) Insert the nipple breather (2-929) into the silicone adapter, with the orientation as indicated in the photo.



c) Slide hose clamp (4093-5) over the indicated area.



d) Place #40 hose clamp over the smaller section of the silicone adapter (5-6821) as indicated.



e) Install the smaller section of the coupler to the inlet of the compressor.





f) Place larger #52 hose clamp over the other side of the silicone coupler.



g) Install the rubber edge trim (8-111) on the indicated area.



h) Slide lower aluminum pipe (2-6822) over opening in engine bay as shown.



i) Rotate the pipe as shown and install MAF sensor with provided M4-.7 X 8MM socket bot(1-2105).



j) Install the extension harness (8-312) on to the MAF sensor, feeding the other end through the upper section of the opening.



k) Insert the pipe into the previously installed silicone adapter and place the bracket on the factory stud. Secure with the factory 10mm nut



l) Plug the extension harness to the MAF sensor connector on the harness side and lock with the previously removed locking pin.



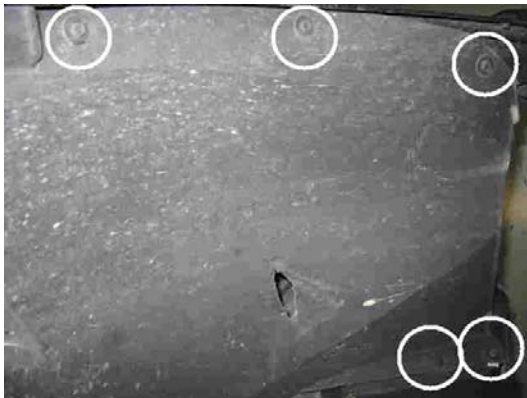
m) Connect the PCV connector to the other end of the breather nipple.



n) Install the air filter element (21-2113D) on to the other end of the pipe and secure with #52 hose clamp.



o) Zip tie the MAF extension wire as shown in the image.



p) Reinstall side and bottom bolts and clips.



q) Reinstall passenger side wheel.

**Stock Intake Installed****AEM Cold Air Intake System Installed**

#### 4. Reassemble Vehicle

- a) Position the inlet pipes for best fitment. Be sure that the pipes or any other components do not contact any part of the vehicle. Tighten the rubber mount, all bolts and hose clamps.
- b) Check for proper hood clearance. Readjust pipes if necessary and retighten them.
- c) Inspect the engine bay for any loose tools and check that all fasteners that were moved or removed are properly tight.
- d) Reconnect the negative battery cable to the terminal.
- e) Start engine. Let car idle for 3 minutes. Perform a final inspection before driving vehicle.



## 5. Service and Maintenance

- a) It is recommended that you service you AEM dryflow filter every 20,000 miles for optimum performance. Use AEM Dryflow cleaning kit part #21-110.
- b) Use aluminum polish to clean your polished AEM Cold Air intake pipe.
- c) Use window cleaner to clean your powder coated AEM Cold Air intake pipe.

**(NOTE: DO NOT USE ALUMINUM POLISH ON A POWDER COATED AEM COLD AIR INTAKE PIPE)**

**For technical inquiries  
e-mail us at  
tech@aempower.com  
or  
call us at  
310.484.2322 Option # 3**

### **AEM Air Intake System Warranty Policy**

AEM warrants that its intake systems will last for the life of your vehicle. AEM will not honor this warranty due to mechanical damage (i.e. improper installation or fitment), damage from misuse, accidents or flying debris. AEM will not warrant its powdercoating if the finish has been cleaned with a hydrocarbon-based solvent. The powdercoating should only be cleaned with a mild soap and water solution. Proof of purchase of both the vehicle and AEM intake system is required for redemption of a warranty claim.

This warranty is limited to the repair or replacement of the AEM part. In no event shall this warranty exceed the original purchase price of the AEM part nor shall AEM be responsible for special, incidental or consequential damages or cost incurred due to the failure of this product. Warranty claims to AEM must be transportation prepaid and accompanied with dated proof of purchase. This warranty applies only to the original purchaser of product and is non-transferable. Improper use or installation, use for racing, accident, abuse, unauthorized repairs or alterations voids this warranty. AEM disclaims any liability for consequential damages due to breach of any written or implied warranty on all products manufactured by AEM. Warranty returns will only be accepted by AEM when accompanied by a valid Return Merchandise Authorization (RMA) number. Credit for defective products will be issued pending inspection. Product must be received by AEM within 30 days of the date RMA is issued.

If you have a warranty issue, please call (310) 484-2322, extension 203 and our customer service department will assist you. A proof of purchase is required for all AEM warranty claims.