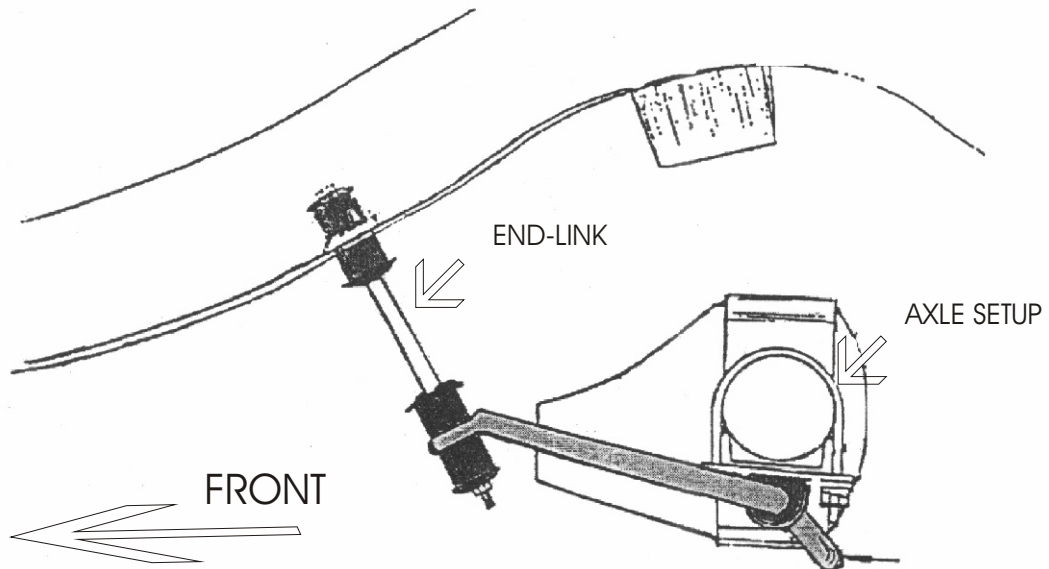
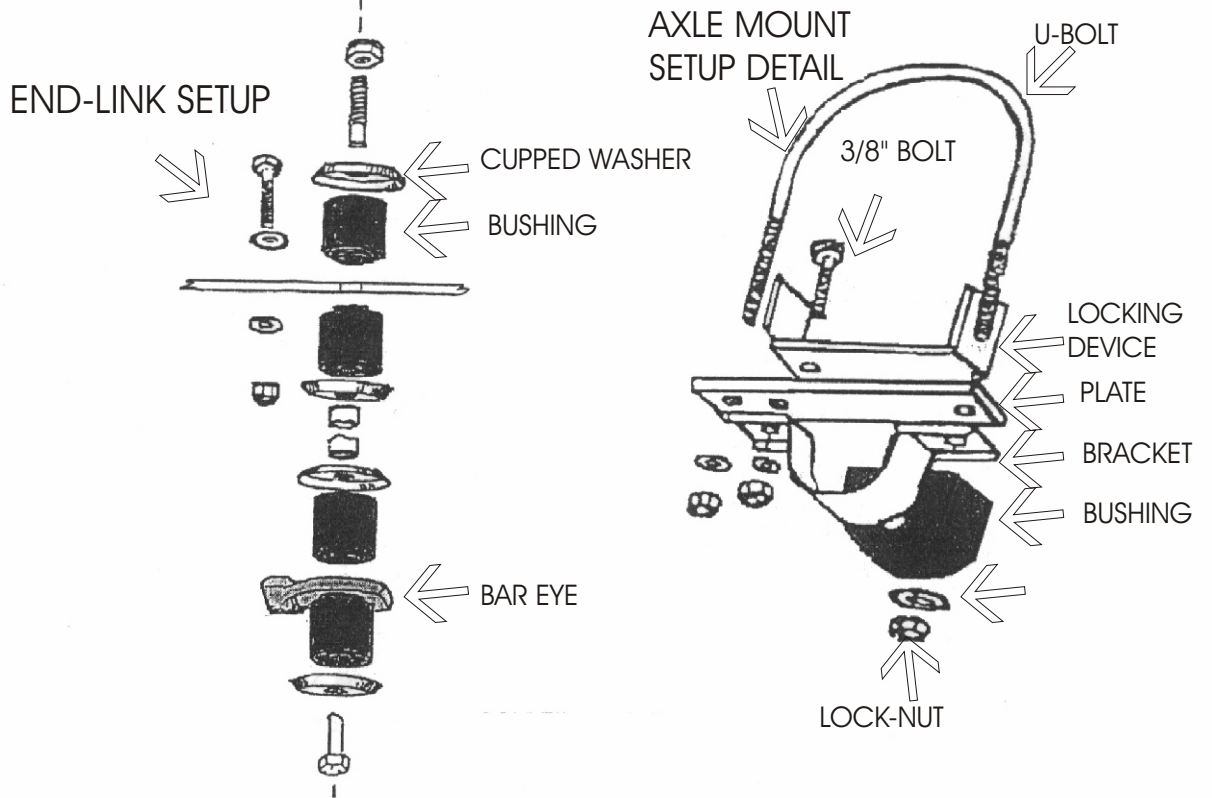


DIRECTION 683



NOTE: WHEN ASSEMBLING AXLE MOUNT BRACKET, ASSEMBLE IT SO THAT THE OFFSET IS TOWARDS THE REAR OF THE VEHICLE AS SHOWN IN THE ILLUSTRATION BELOW



NOTE: For ease of installation back vehicle up on a set of car ramps and chock front wheels. Suspension must be at normal ride height for proper installation.

STEP #1. Locate existing 3/8" hole in the bottom of the frame rail approximately 8" ahead of the axle. Using the 3/8" bolt, washers, and lock-nut provided attach the adapter plate on top of the inside edge of the bottom of the frame rail. Tighten the bolt so that the adapter plate can still pivot so that final adjustments can still be made. Repeat for other side.

STEP #2. Assemble end-link so as to connect the bar eye to adapter plate as seen in the illustration. Repeat for other side.

STEP #3. Place U-bolt around axle just outboard of the lower shock mount. It may be necessary to undo brake line clips so that the brake line passes out around U-bolt. Next place the D-bushings around the mid-section of the bar near the arm bends. Loosely bolt the locking device, base plate, and bar bracket together and place the assembly around D-bushing. Repeat for other side. Now swing bar up and place U-bolt through base plate and secure with flat washers and lock-nuts.

STEP #4. Tighten the 3/8" bolts that hold the locking device ,base plate, and bar brackets. Next tighten the U-bolt until there is 1/8" clearance between the locking device and axle. Now tighten the bolt that attaches the adapter plate to the frame rail. Adapter plate should be slightly pointing forward. Tighten end-link assembly until you can not rotate the tube spacer. Note: over tightening end-links may cause premature bushing wear or a rough feeling ride.

STEP #5. Now bounce the back of the vehicle to check bar clearances in relation to suspension travel. Road test the vehicle to familiarize yourself with its new handling. As we can not supervise your installation or your driving, we can not be held responsible for more than the cost of the kit.

HARDWARE KIT:

2	RH 018 End-Links	2	RH 615 Adapter Plates
4	RH 214 3/8 Bolts	8	RH 304 Lock-Nuts
10	RH 104 Flat Washers	2	RH 410 U-Bolts
2	RH 052 Locking Devices	2	RH 600 Base Plates
2	RH 509 D-Bushings	2	RH 040 Bar Brackets
2	RH 263 Bolts	2	RH 068 Tube Spacers