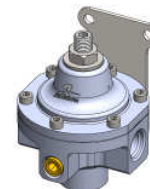




AEROMOTIVE
Part # 13222
INSTALLATION INSTRUCTIONS



CAUTION:

Installation of this product requires detailed knowledge of automotive systems and repair procedures. We recommend that this installation be carried out by a qualified automotive technician.

Installation of this product requires handling of gasoline. Ensure you are working in a well ventilated area with an approved fire extinguisher nearby. Extinguish all open flames, prohibit smoking and eliminate all sources of ignition in the area of the vehicle before proceeding with the installation.

When installing this product, wear eye goggles and other safety apparel as needed to protect yourself from debris and sprayed gasoline.

WARNING!

The fuel system may be under pressure. Do not open the fuel system until any pressure has been relieved. Refer to the appropriate vehicle service manual for the procedure and precautions for relieving the fuel system pressure.

The enclosed Aeromotive regulator utilizes straight thread, o-ring sealed ports. These regulator ports are **NOT PIPE THREAD** and utilize **NO THREAD SEALANT**. Equipped with one ORB-06 style inlet port and two ORB-06 style outlet ports, ORB-06 to AN male flare fittings are required. Aeromotive recommends fitting P/N 15606 for AN-06 line connections, P/N 15649 for AN-08 line connections and P/N 15626 if a port plug is needed.

Performance Specifications: P/N 13222

Outlet Fuel Pressure Adjustment Range:	2.0 – 5.0 psi
Maximum Inlet Pressure Range:	4.0 – 20.0 psi
Inlet port Size	1x ORB-06
Outlet Port Size	2x ORB-06

Aeromotive system components are not legal for sale or use on emission controlled motor vehicles.

Aeromotive Commonly Used Port Fittings:

15606 – ORB-06 to AN-06 Flare
15609 – ORB-10 to AN-06 Flare
15626 – ORB-06 Port Plug
15649 – ORB-06 to AN-08 Flare

Aeromotive Commonly Used AN-06 Hose-Ends:

15650 – AN-06 Straight Hose-End, Black Aluminum
15651 – AN-06 45-Degree Hose-End, Black Aluminum
15652 – AN-06 90-Degree Hose-End, Black Aluminum

Aeromotive Commonly Used SS Braided Fuel Line:

15701 – AN-06 4' Length
15702 – AN-06 8' Length
15703 – AN-06 12' Length

Aeromotive Commonly Used Fuel Filters:

12324 – 100-micron, In Line, ORB-10 Filter, Black
12321 – 10-micron, In-Line, ORB-10 Filter, Black
12601 – 10-micron Replacement Element for 12301
12001 – Filter O-Ring, 10-Pack (For all ORB-10 Filters)



The following steps are typical of most installations:

1. Refer to the diagram above throughout the installation process.
2. Once the engine has been allowed to cool, disconnect the negative battery cable and relieve the fuel system pressure.
3. Place shop towels around the regulator to catch any gasoline that is spilled during this step of the installation. Remove any regulator mounting hardware and connecting fuel lines, carefully remove the regulator.
4. Find a suitable place in the vehicle's engine compartment to mount the Aeromotive regulator. With the regulator oriented such that the adjusting stud is on top and the inlet port on the bottom, use the supplied mounting bracket as a template and mark the bracket mounting holes.
5. Drill the mounting holes marked in step 4 adequate to accept #10 fasteners or sheet metal screws.
6. With the bracket attached to the regulator, mount the bracket and regulator to the vehicle using two #10 sheet metal screws, or #10 machine screws with matching nuts and lock washers.
7. Attach the fuel supply line to the bottom port of the regulator using an ORB-06 to AN-06 Flare (Aeromotive P/N 15606) or ORB-06 to AN-08 Flare (Aeromotive P/N 15649) fitting and o-ring.
8. Attach the fuel supply line(s) to the carburetor(s) using AN-06 or AN-08 style hose-ends. Install ORB-06 style plugs (Aeromotive P/N 15626) with o-ring into any outlet ports not used.
9. Tighten all connections.
10. Once the regulator is installed, after removing the gold colored hex plug from the pressure test port in the regulator base, attach a suitable fuel pressure gauge such as Aeromotive P/N 15632. Use a PTFE sealing paste to prevent leakage on NPT style threads.
11. **Ensure that any spilled gasoline and any gasoline soaked shop towels are cleaned up and removed from the vicinity of the vehicle!**
12. Loosen the jamb nut at the base of the pressure adjusting stud in the cap of the regulator and back the adjusting stud out to the lowest pressure setting (2 psi).
13. Reconnect the battery and turn the fuel pump ON **WITHOUT** starting the car. After several seconds, check the fuel pressure. If there is no fuel pressure, turn the fuel pump OFF, wait one minute, return the fuel pump ON, and recheck the fuel pressure. Repeat this OFF and ON procedure until the fuel pressure gauge registers fuel pressure.

14. **With the fuel pressure gauge registering fuel system pressure, check for fuel leaks from and around the Aeromotive regulator and all fuel lines and connections near the regulator! If any fuel leaks are found, turn the fuel pump OFF, remove any spilled fuel and repair the leak before proceeding!**
15. Once the fuel pressure gauge registers fuel system pressure and there are no fuel leaks, start the engine and adjust the regulator up to the desired fuel pressure. Turning the adjustment screw clockwise (into the cap) will increase fuel pressure.
16. Once the desired fuel pressure is achieved, tighten the regulator adjustment jam nut.
17. If you do not want to keep the fuel pressure gauge on the vehicle, relieve the fuel system pressure as instructed in the appropriate vehicle service manual. Remove the fuel pressure gauge and reinstall the 1/8 NPT pipe plug into the regulator gauge port, using thread sealant.
18. Test drive the car to insure proper operation and re-check the fuel system for leaks. **If any leaks are found, immediately shut off the engine and repair the leak(s)!**

AEROMOTIVE, INC.
7805 Barton Street, Lenexa, KS 66214
913-647-7300 fax 913-647-7207

AEROMOTIVE, INC. LIMITED WARRANTY

This Aeromotive Product, with proof of purchase dated on or after January 1, 2003, is warranted to be free from defects in materials and workmanship for a period of one year from the original date of purchase. No warranty claim will be valid without authentic, dated proof of purchase.

This warranty is to the original retail purchaser and none other and is available directly from Aeromotive and not through any point of distribution or purchase.

If a defect is suspected, the retail purchaser must contact Aeromotive directly to discuss the problem, possible solutions and obtain a Return Goods Authorization (RGA), if deemed necessary by the company. Please call 913-647-7300 and dial option 3 for the technical service dept. All returns must be shipped freight pre-paid to the company and with valid RGA before they will be processed.

Aeromotive will examine any product returned with the proper authorization to determine if the failure resulted from a defect or from abuse, improper installation, misapplication or alteration. Aeromotive will then, at it's sole discretion, return, repair or replace the product.

If any Aeromotive product is determined defective, buyer's exclusive remedy is limited in value to the sale price of the good. In no event shall Aeromotive be liable for incidental or consequential damages.

Aeromotive expressly retains the right to make changes and improvements in any product it manufactures and sells at any time. These changes and improvements may be made without notice at any time and without any obligation to change the catalogs or printed materials.

Aeromotive expressly retains the right to discontinue at any time and without notice any Aeromotive product that it manufactures or sells.

This warranty is limited and expressly limits any implied warranty to one year from the date of the original retail purchase on all Aeromotive products.

No person, party or corporate entity other than Aeromotive shall have the right to: determine whether or not this Limited Warranty is applicable to any Aeromotive product, authorize any action whatsoever under the terms and conditions of this Limited Warranty, assume any obligation or liability of any nature whatsoever on behalf of Aeromotive under the terms and conditions of this Limited Warranty.

This Limited Warranty covers only the product itself and not the cost of installation or removal.

This Limited Warranty is in lieu of and expressly excludes any and all other warranties, expressed or implied. This Limited Warranty gives you specific legal rights, and you may also have other rights which vary from state to state.