



Installation Instructions

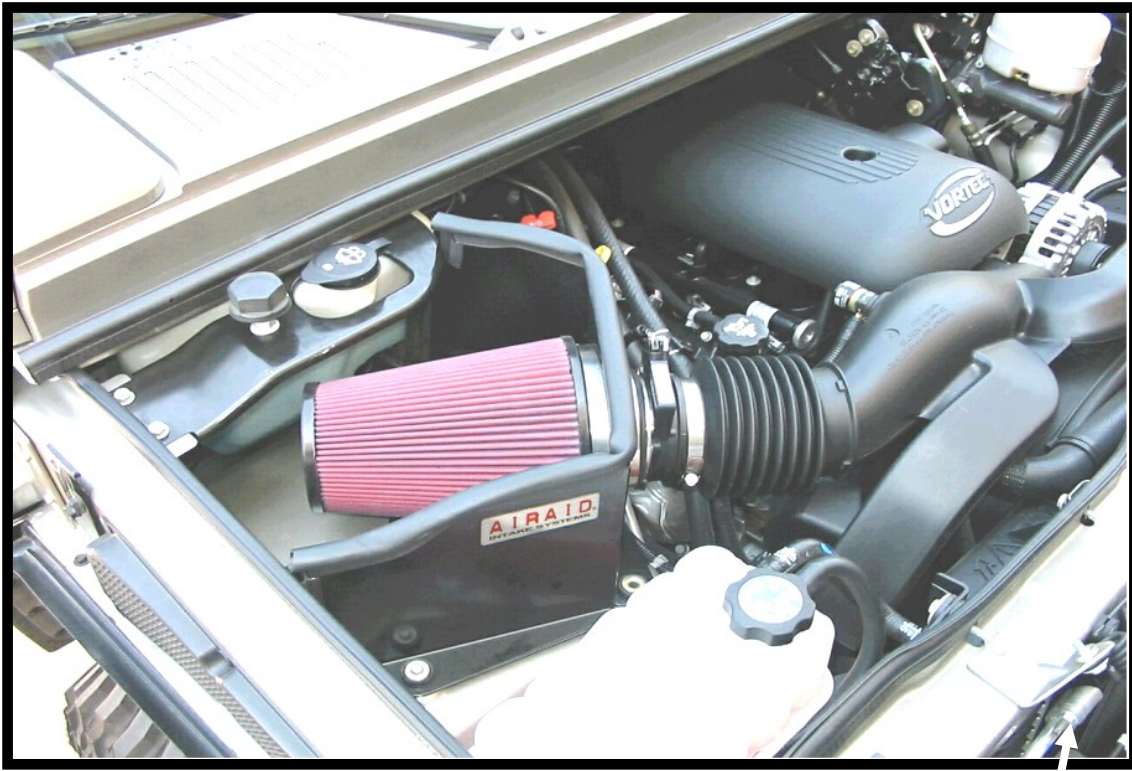
For Part Numbers:

200-183	700-469 Airaid Oiled Media Filter
201-183	701-469 SynthaMax Dry Media Filter - Red
202-183	702-469 SynthaMax Dry Media Filter - Black
203-183	703-469 SynthaMax Dry Media Filter - Blue

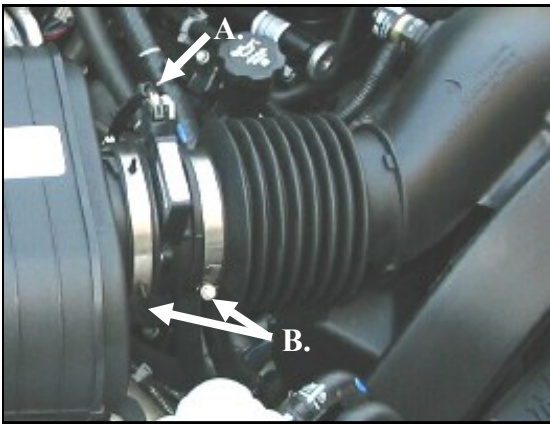
2003-09 Hummer H2/H2 SUT
6.0L V8, 6.2L V8

Component Identification

1.	Airaid Premium Filter	1
2.	MAF Panel Coated	1
3.	Bottom Panel Coated	1
4.	Filter Adapter	1
5.	Weather Strip 24 3/4"	1
6.	1/4-20 x 5/8" Bolt	3
7.	1/4" Flat Washer	3



Full color instructions can be viewed on our web site at Airaid.com. Use the **Product Search** function to find your part number, and click **View Details**.



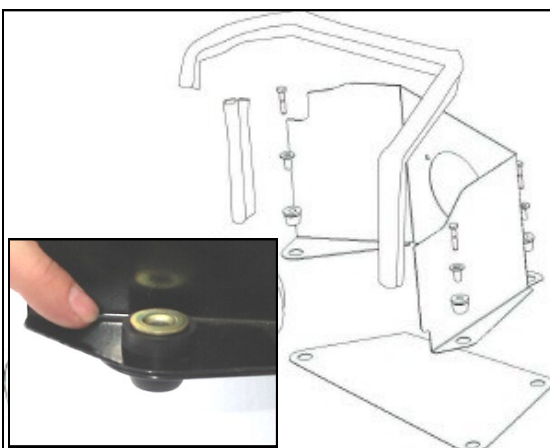
1. Disconnect the negative battery cable.
A.) Disconnect the Mass Air Flow (MAF) sensor wiring harness.
B.) Loosen the two hose clamps on the MAF sensor and remove it.



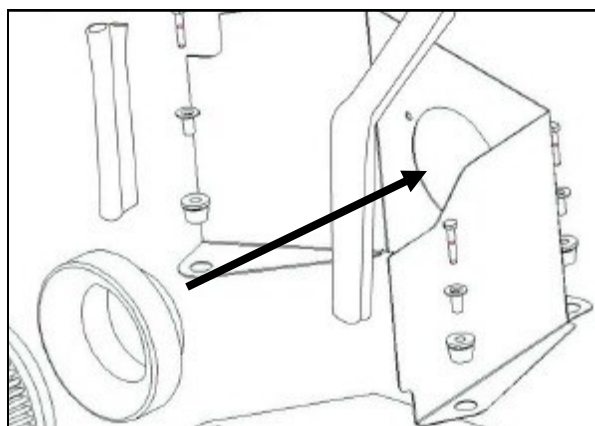
2. Using a 10mm socket, remove the three bolts that secure the factory airbox to the inner fender (save for reuse).



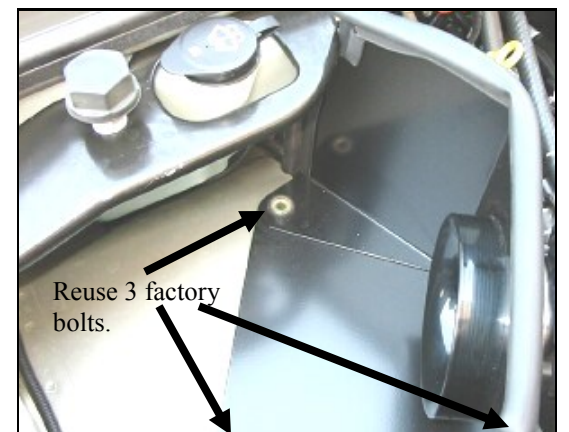
3. Remove the factory airbox and set it aside. Using a flat blade screwdriver, remove and save the three factory rubber grommets and inserts from the airbox base.



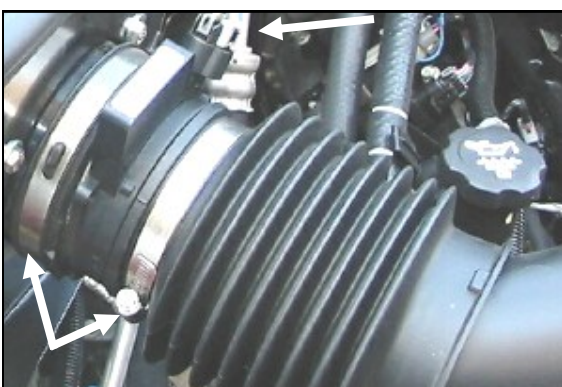
4. Assemble the Airaid Cool Air Dam panels (#2, #3) using the factory rubber grommets and inserts as shown.



5. Install the filter adapter (#4) into the Airaid Cool Air Dam using three 1/4-20x 5/8" bolts (#6), and 1/4" flat washers (#7).



6. Install the Airaid Cool Air Dam over the three factory mounting points, and fasten with the factory bolts saved in step #2.



7. Slide the MAF sensor onto the filter adapter and tighten the clamp. Slide the factory intake tube onto the other side of the MAF sensor, and tighten the clamp. Reconnect the MAF sensor wiring harness.



8. Install the Airaid Premium Filter (#1) onto the filter adapter, and tighten the hose clamp. Install the provided weather strip (#5) onto the top edge of the panel. (*Hint: Start at one end, and work to the other.*)

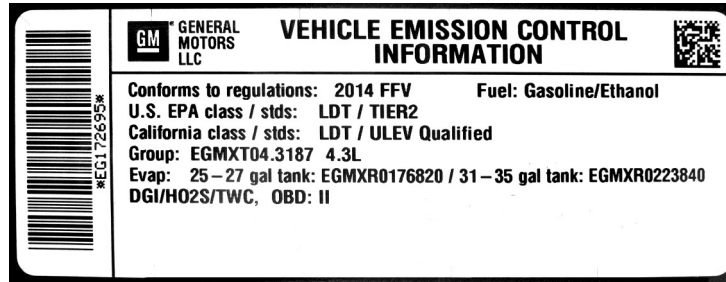


9. Congratulations on installing your new intake system! See the back of this page for further instructions.

10. Double check your work!

Make sure there is no foreign material in the intake path. Make sure all clamps, hoses, bolts, and screws are tight.

11. Reconnect the negative battery cable!



WARNING! If your vehicle has a Vehicle Emission Control Information decal affixed to the factory airbox, a new replacement label must be obtained and installed in a readily visible position in the engine compartment in order to remain CARB compliant. Failure to do so will prevent the vehicle from passing a smog check. Replacement labels can be ordered from your local dealership. Regulations state that the VECI label shall not be affixed to any equipment which is easily detached from the vehicle. Label placement, under the hood on a painted surface is recommended.

Thank you for purchasing the Airaid Intake System. Contact Airaid @ (800) 498-6951 8:00 AM - 5:00 PM MST weekdays for questions regarding fit or instructions that are not clear to you. Your Airaid Intake System was carefully inspected and packaged. Check that no parts are missing, or were damaged during shipping. If any parts are missing, contact Airaid. The air filter element is protected from direct exposure to water and debris; care should be taken not to drive through deep water. WATER INGESTION IS THE DRIVERS RESPONSIBILITY! The air filter is reusable and should be cleaned periodically.

FILTER IDENTIFICATION

700-469 Airaid Oiled Media
702-469 Airaid SynthaMax Dry Media - Black

701-469 Airaid SynthaMax Dry Media - Red
703-469 Airaid SynthaMax Dry Media - Blue

**For your Oiled media filter
we suggest using the AIRAID
Filter Tune-Up Kit!**



P/N 790-551 Aerosol Spray
P/N 790-550 Squeeze Spray

SynthaMax®

Do Not Oil

Synthamax Air Filters do not require oil. Service air filter as needed by cleaning with common non-petroleum all-purpose household cleaner and water. Simple Green®, Formula 409® or equivalent works great. Apply cleaner to outside of air filter and allow to soak. Then flush filter clean from the inside out with a garden hose and repeat steps if necessary. Do not apply high pressure water or air to clean filter. Allow filter to air dry and reinstall.

