



350 S. St. Charles St. Jasper, In. 47546
Ph. 812.482.2932 Fax 812.634.6632
www.ridetech.com

Part # 11019100
55-57 Chevy Front MuscleBar

Components:

1	90000731	Sway Bar
2	90001100	Bushing and strap kit
2	90000729	Frame plate
4	90000717	Aluminum step washer
2	90000924	10mm straight PosiLink
2	90000926	10mm 90 degree PosiLink
1	90001092	Tube of lithium grease

Hardware:

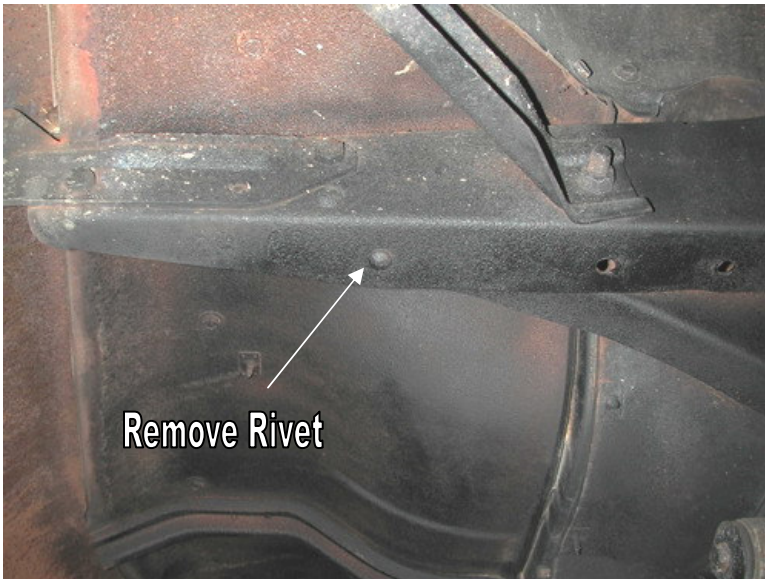
2	10mm x 1.5 stud	PosiLink (use Loctite)
2	10mm lock washer	90 degree PosiLink
2	10mm Nylok nut	Straight PosiLink
8	3/8" x 1 1/4" USS bolt	Frame plate
8	3/8" USS Nylok nut	Frame plate
18	3/8" SAE flat washers	Frame plate & PosiLink

MUSCLEbar™

POSI • Link™

SWA7500 Installation Instructions

This sway bar is designed for use with Air Ride Technologies StrongArms.



1. The sway bar frame plate will index off of this factory support brace rivet. Remove the rivet by grinding the head smooth, then drive it out with a hammer and punch.

2. Drill hole to 3/8".



3. Using a 3/8" x 1 1/4" bolt, flat washer and Nylok nut, bolt the frame plate to the bottom of the frame rail.

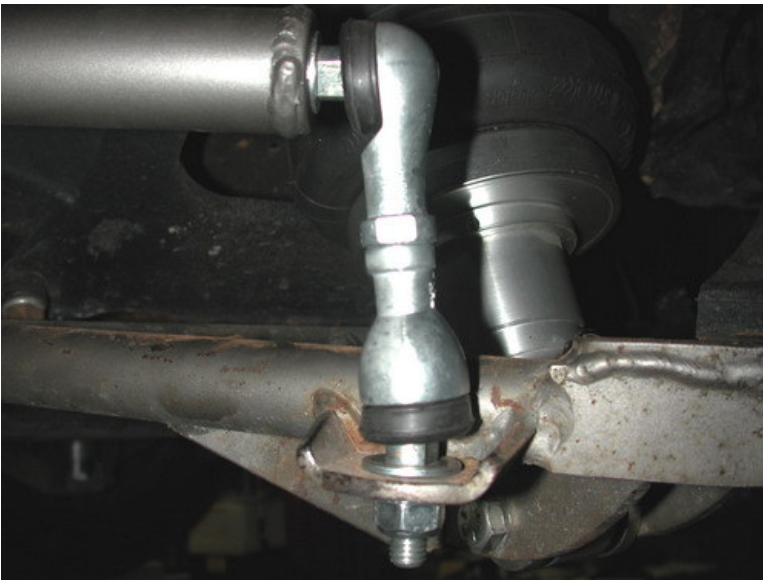
4. Make sure the side of the plate is aligned with the outside of the frame rail. Drill the remaining holes.

5. Bolt the outside rear hole of the plate to the frame using a 3/8" x 1 1/4" bolt, Nylok nut and flat washer.



6. Apply lithium grease to the poly bushing. Install the bushing over the sway bar, and then place the bushing strap over the bushing.

7. Bolt the sway bar to the frame plate using two 3/8" x 1 1/4" bolts, Nylok nuts and flat washers. Do not tighten yet.



8. Bolt the 90 degree end of the PosiLink to the sway bar. A 3/8" flat washer and 12mm lock washer must be installed between the PosiLink and the bar.

9. Bolt the straight end of the PosiLink to the lower control arm. An aluminum step washer must be installed on each side of the control arm tab. Fasten with a 12mm Nylok nut. Then tighten the bushing frame bolts.



Your MuscleBar installation is now complete. If you have any further questions, please call our technical support line at 812-482-2932.