



Fabric Replacement Soft Top
2007-2009 Jeep JKU 4 Door Wrangler
Part # RT11035

WARNING: Loss of vehicle control involves risk of death or serious injury, particularly to parts of your body not restrained within vehicle. This product is intended for weather protection only and should not be relied upon to contain occupants in the event of an accident or to protect from either ground contact or falling objects. To reduce risk of accident or injury:

- **ALWAYS WEAR SEATBELTS**
- **Always keep head, arms & body parts within vehicle**
- **Fully secure or stow the soft top before driving according to instructions. Never try to latch or fold soft top while driving. Do not use if damaged or worn**
- **Read and follow all instructions & warnings accompanying this product, in your vehicle owner's manual and Off-Road Driving Supplement.**
- **RISK OF EYE INJURY. Safety glasses should be worn at all times while installing or maintaining this product**

IMPORTANT PRE-INSTALLATION NOTES:

IMPORTANT: You must have factory original style hardware and bow system for this fabric top to fit your vehicle. If you are removing a hard top and replacing it with a soft top, you will need soft top hardware that is not included in this box for this fabric only top to fit. See your RT Off Road Distributor for the necessary hardware.

Required Tools for installation:

Safety Glasses	Masking Tape
Phillip's Head Screw Driver	T-15 Torx Driver or Bit
T-30 Torx Driver or Bit	Pliers

Before you begin installing this top please read through the instructions to get a general knowledge of how the soft tops are installed. Installers Tip: It is recommended to install the top when the fabric has been resting in temperatures above 75° F. Colder temperatures will shrink the soft components. It is recommended to lay the top components out in the sun or in a warm garage. Allowing the top components to warm will greatly ease the installation process.

Step One: Remove your Old Top Fabric

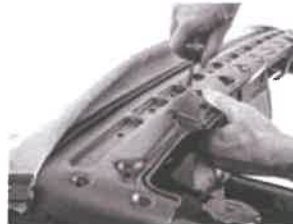
1. Allow the vehicle to warm in the sun prior to removal of top. This will ease removal. Put on Safety Glasses.
2. Park the vehicle on a level surface and apply the e-brake. Un-latch the windshield header
3. Unzip and remove the rear window and the two side quarter windows.
4. Next remove the top from each rear corner by pulling down to release the fabric from the corner track retainers.
5. Un-screw the fabric from the bow #2 & #3 and release the hook and loop flap from the center bow of the jeep.
6. Remove the fabric from the front header by folding the top completely down over the hood of the vehicle. Un-screw all header screws (19 or 27 screws depending on model year) and two corner screws. **SAVE THESE SCREWS!** Lift up the metal top plate and pull out the fabric from the header. See pictures below.
7. For 2010-2018 models you will need to peel back the corner foam and unscrew the cable attachment on both ends of the header using a T-15 Torx or Philips head screw driver depending on model year. For 07-09 models, you will need to peel back the foam and remove the two corner screws that hold a plastic mounting flange located in the same vicinity. See pictures below:



Remove Windows



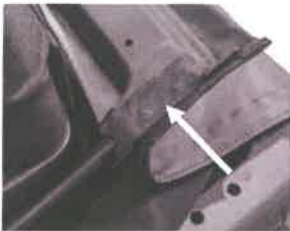
Un-screw fabric from rear bows



Remove header screws



Remove corner Screws



Peel back foam to expose two screws which need to be removed. Save the screws

Leave hardware on the vehicle with your front header resting on the windshield.

Important Installation Note: The following header installation will be easier to accomplish with the help of another person. This step will most likely be the most difficult step in the install and you should take your time. The easiest way to install this header is standing on the front seats facing forward. We suggest placing a towel or cover on the seats to protect them from dirt and debris from your shoes. Once the soft top header fabric is installed in the factory header, the remaining installation should be very straight forward.

Step Two: Install New Fabric to your Soft Top Hardware



Fig 1

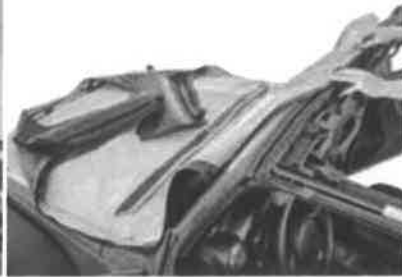


Fig 2

1. Install New Top Fabric to your Windshield Header. With the old top completely removed and the top header plate unscrewed from the lower header, raise the bow assembly and lock the header to the windshield (See Fig 1). As seen in Fig 2, drape the soft top fabric backing side up over the hood and the windshield and locate the front extrusion sewn into the front header of the Top. Locate the masking tape and have it ready for the next step.



Fig 3

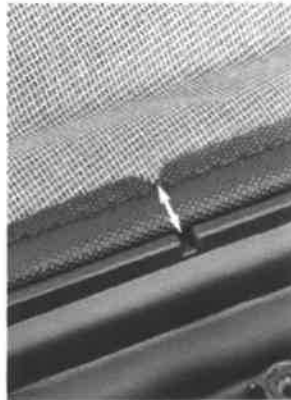


Fig 4

2. Centering the new fabric on the windshield header and securing it with tape. Slide the sewn in extrusion along the front edge of the top into the channel of the lower header that is secured to the windshield in step one (See Fig 3). Locate and line up the center notch in the middle of the fabric to the center of the channel centering the fabric on the lower header (Fig 4). Secure the fabric around the center notch with masking tape.



Fig 5



Fig 6



Fig 7

3. Working from the center out, secure the top in the lower header channel with masking tape holding it in place for installing the top plate to the lower header. Use 5-6 pieces of tape to hold the top in place (Fig 5). Note: The tape pieces will be completely covered when the top plate is put back on the lower header (Figs 6 & 7).



Fig 8

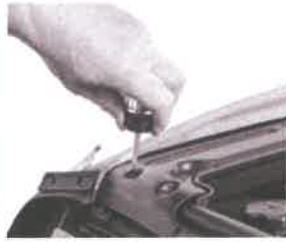


Fig 9



Fig 10



Fig 11

4. Close the upper header over the taped down fabric sandwiching the fabric but leaving the underside of the fabric faced up on the hood (See Fig 8). Using the screws you removed in step one, reinstall the four corner screws and then the 19 or 27 (depending on model year) screws along the top of the header. See Figs 9 & 10. Un-latch the bow assembly from the windshield (inside vehicle) and lower the bow assembly to the rear of the vehicle folding the top back over with the underside of the fabric facing down (see Fig 11).

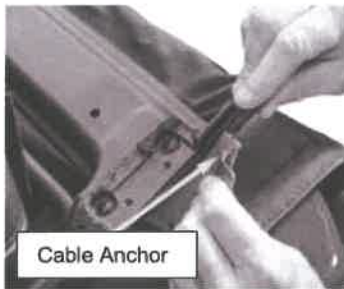


Fig 12



Fig 13

5. Slip the corner pocket sewn into the top between the header and position the cable anchors over the two holes with the cable facing the outside of the header (Figs 12 & 13). Note: on 07-09 models the screw holes may not line up exactly and some hole relocation may be required using a drill. Reinstall the cable anchor screws on each side of the header as shown in Fig 13.

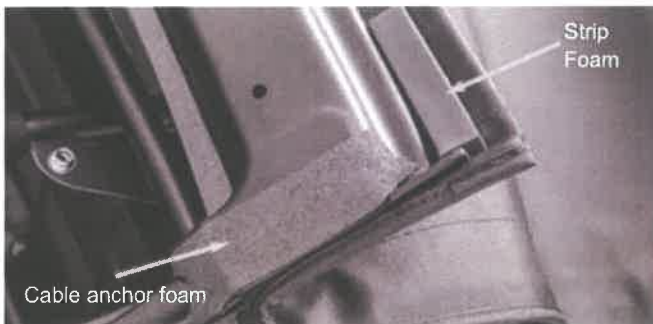


Fig 14

6. Locate the Header foam packet and attach foam over the installed cable anchors on each side of the header. Install the small "strip" foam on the front of the header as shown in Fig 14.



Fig 15- (Two Door Model Shown for Reference)

7. Drape the top fabric over the cab reinstalling and securing the bow assembly above the door. The front header should be resting on the windshield but not attached/clamped and the top fabric should be laid back but not attached to the rear bows. See Fig 15.

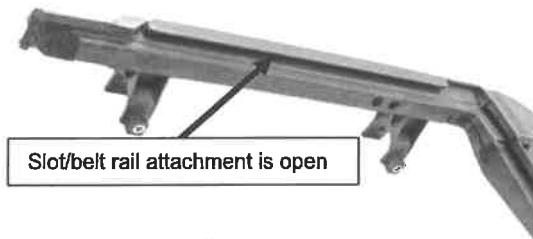


Fig 16- 2007-09 Early model Door Surround



Fig 17- 2010-18 Late model Door Surround

8. Identify your Door Surrounds. For 07-09 JK Wranglers you will need to identify your door surrounds. See Figs 16 and 17 showing early vs. late model rear door surrounds. If you have **early model door surrounds** you will need to install the cable style top conversion kit. **2010-2018 Late Model Door Surround customers skip to Step #10 below.**

For 2007-2009 Early Model Door Surrounds Only-Cable Conversion Kit Install

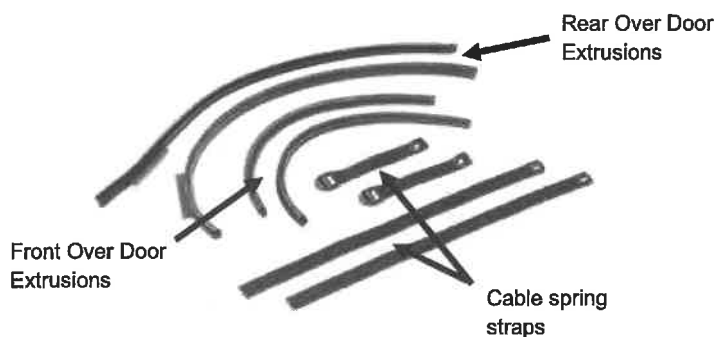


Fig 18



Fig 19- Proper Cable Spring Strap threading

Cable style Top Conversion Kit Contents



Fig 20

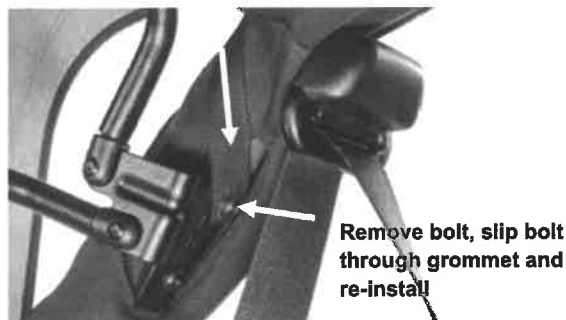


Fig 21

- 9A. Securing the Cable Spring on 07-09 Models Using the Conversion Kit. Locate the early model conversion kit. With the front header resting on the windshield and the remainder of the top draped over the rear bows, fold back the front header to reduce tension in the cable. Locate the Cable spring hanging out of the top behind the rear seat next to the rear vertical door surrounds. Locate the Cable spring straps (fig 18) and loosely thread the long strap through the buckle as shown in Fig 19 so that there is a grommet on one end and a D-Ring on the other end of the combined strap. Attach the short strap end D-ring to the cable spring and using a set of pliers, crimp the spring end closed so it cannot be easily slipped off. Wrap the strap around the outside of the Sport bar and down attaching it (remove top bracket bolt with a T-30 Torx, slip bolt through Grommet and re-attach) to the top bolt hole where the soft top hardware is installed. See Figs 20 & 21. Repeat the above for opposite side of top.

Do not tighten the side cable spring strap at this time. The front header must be closed and locked before you tighten the cable spring straps!

WARNING: When installing the strap make sure you do not hinder the use of the seat belt. The strap should go inside the vehicle under any seat belt strap

Rear Over Door Extrusions

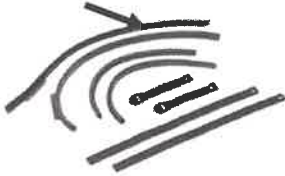


Fig 22



Fig 23

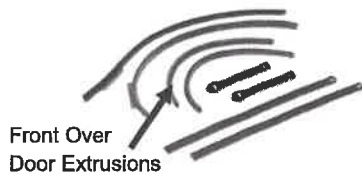


Fig 24



Fig 25

9B. Rear Over Door Extrusion: The cable sewn into the top needs to rest inside of a "rain gutter" to seal properly. This step installs the rain gutter "extrusion" to your hardware. Locate the Rear Over Door Extrusion (See fig 22). Line up the rear extrusion with the gap in the hardware and slowly but firmly push the extrusion up into the lip of your door surrounds. The soft lip should be facing up and the small plastic strip should fill in the gap on the door surround hardware. Work your way back towards the rear of the vehicle securing the extrusion along the way. See Figs 23, 24 & 25.



Front Over Door Extrusions

Fig 26



Fig 27



Fig 28



Fig 29

9C. Front Over Door Extrusion: Locate the Front over door Extrusion (See Fig 26). Line up the front extrusion with the end of the rear extrusion (attached in step 9) and slowly but firmly push the extrusion up into the lip of your door surrounds. The soft lip should be facing up. Work your way forwards towards the Front of the vehicle securing the extrusion along the way. See Figs 27, 28 & 29.

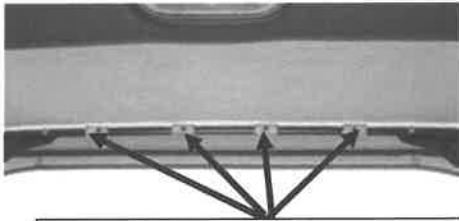


Fig 30



Fig 31

10. Fold the top fabric forward to Expose Bow #2. Reinstall the 4 screws that attach the center bow (Bow #2 over front of rear quarter window opening). These screws are the ones previously removed from your original top. On some models the straps may have to wrap around the opposite side of the bow. Regardless, the bow straps should be tight See Figs 30 & 31.



Tabs shown. This could be a single flap.
 Push screws through fabric into rear
 bow holes and tighten with screw driver

Fig 32



Fig 33



Fig 34

- Reinstall the 4 screws that attach the rear bow through the fabric tabs or single horizontal flap (Bow #3 over rear window opening). Push the screw through the fabric and into the hole on the bow. There are no holes drilled into the fabric Flap. These screws are the ones previously removed from your original top. On some models the flap may have to wrap around the opposite side of the bow. regardless, the bow flaps should be tight. Attach the hook and loop flap around the front bow (Bow #1 over the sound Bar). See Figs 32, 33 & 34.



Fig 35



Fig 36

- With all the bows attached to the top, pull down on the rear bow while securing the rear corners into the retainers on the vehicle. See Figs 35 & 36.



Fig 37



Fig 38



Fig 39

- Secure Front of the Top to the windshield. With the cable spring installed, close the front header latches to secure the front of the top to the windshield. See Figs 37, 38 & 39.

Note: With the rear corners attached the first time you fold down the front header it will be **EXTREMELY TIGHT**. This is normal. We highly recommend that two people fold down the header simultaneously. This will prevent possible damage to the hardware system.

Caution: The leading edge of the soft top must be secured to prevent the loss of the top at speed. Latches must be fully closed and free of mud and other contamination. Do not use top if either latch is damaged.



Fig 40

14. With the front Headers latched, tighten the side spring cable straps on each side of the top. See Fig 40.



Fig 41



Fig 42

15. Attach the quarter window zippers by starting the zipper on the quarter window and zipping it closed 2-3 inches. Repeat this on the other side of the vehicle. See Figs 41 & 42.



Fig 43



Fig 44

16. Attach the front of the quarter windows along the front edge of the vertical door surround by rolling the plastic into the slot on the door surround. Repeat on the opposite side of the top. See Figs 43 & 44.



Fig 45



Fig 46



Fig 47

17. Roll the bottom of the quarter window into the retainer channel on the vehicle and then close the quarter window zipper the rest of the way. Close up the hook and loop fasteners around the zippers. See Figs 45, 46 & 47.

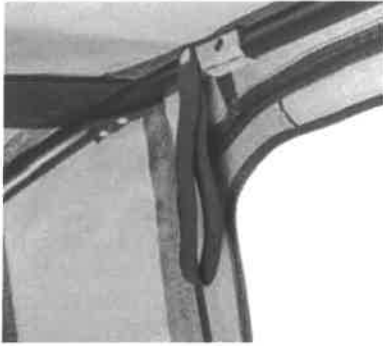


Fig 48



Fig 49

18. Snap the elastic window roll straps on the rear bow above the rear window opening. These straps can be used to secure your rear window when rolled up. See Figs 48 & 49

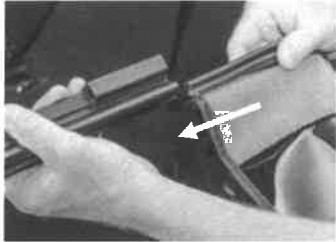


Fig 50



Fig 51



Fig 52



Fig 53

19. Locate the rear window and place it on a soft surface with the backing side up. Take the factory bar removed in step one and orient the "C" Channel with the round seal facing down and slide the "C" Channel onto the rear window retainer as shown in Figs 50 & 51. After sliding the retainer all the way through the "C" Channel, roll the tailgate bar into the mounts with the outside of the fabric facing towards the rear of the vehicle. See Figs 52 & 53.



Fig 54



Fig 55



Fig 56



Fig 57

20. Secure the rear window zippers by pulling the two zipper sliders all the way down as far as possible in order to catch the sliders on the zipper pin. Once the zipper is caught, raise the zipper 1"-2". Hold the top of the window with one hand and zip up the zipper all the way with the other hand. Make sure that the tailgate bar is centered. If the zippers have too much distance between the window and the top, slide the rear corners around towards the middle of the vehicle until the zippers can be closed. See Figs 54 & 55. Tuck the flaps under the window zippers into the retainers to secure the rear window. See figs 56 & 57.

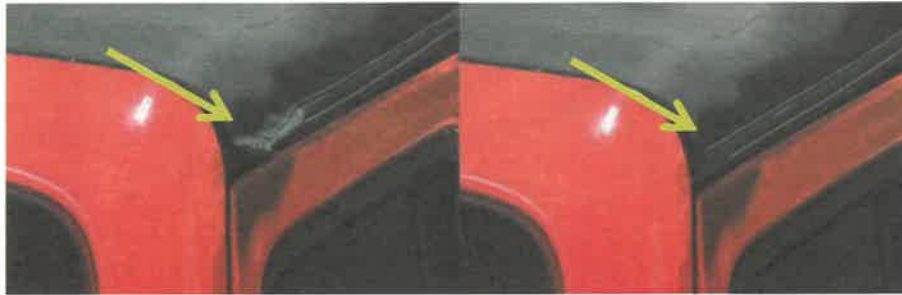
WARNING: When operating the vehicle with the quarter windows removed, the rear window should be rolled up and secured with the elastic straps or completely removed for proper ventilation.

IMPORTANT

Updated Installation Information for your JK or JKU Soft Top installation

In an effort to keep our valued customers up to date on the latest installation methods and techniques, please see below for a quick trouble shooting tip for your JK or JKU soft top:

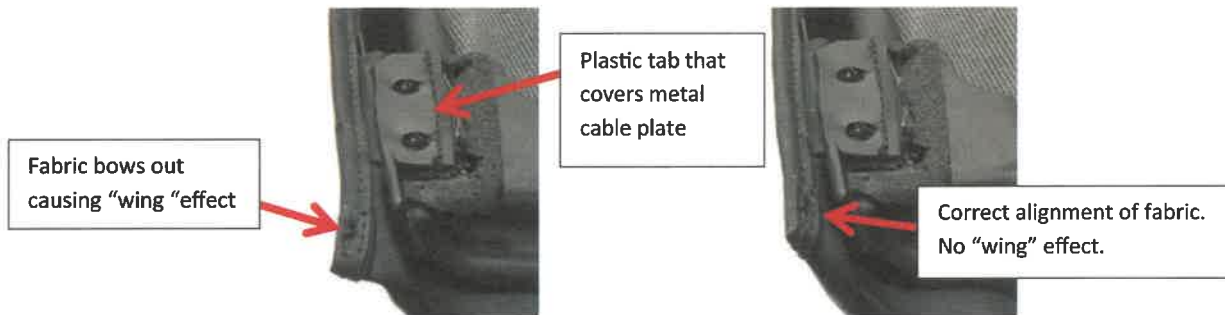
Through the installation of thousands of JK and JKU soft tops we have come across a common installation issue that can affect the look of your top. This issue is a fabric "wing" effect at the front header. This "wing" is caused by the location of the front cable tab and plastic installation.



"Wing Effect"

No "Wing Effect"

If you find this situation on your soft top install, you can solve it by relocating the attachment points on the plastic tab that fits over the metal cable attachment on the front corner of the windshield header:



Front corner of JK/JKU Windshield Header

To solve this "wing effect", you will need to relocate the installation holes outward of the current pre-drilled holes. This will pull the fabric inwards and eliminate the "wing effect". Relocating these holes will require re-drilling the two installation holes as shown below (marked by an "X") and then re-installing the screws in these new holes:

