



Fabric Replacement Soft Top
2013-2018 Jeep JK 2 Door Wrangler
Part # RT11135T

WARNING: Loss of vehicle control involves risk of death or serious injury, particularly to parts of your body not restrained within vehicle. This product is intended for weather protection only and should not be relied upon to contain occupants in the event of an accident or to protect from either ground contact or falling objects. To reduce risk of accident or injury:

- **ALWAYS WEAR SEATBELTS**
- Always keep head, arms & body parts within vehicle
- Fully secure or stow the soft top before driving according to instructions. Never try to latch or fold soft top while driving. Do not use if damaged or worn
- Read and follow all instructions & warnings accompanying this product, in your vehicle owner's manual and Off-Road Driving Supplement.
- **RISK OF EYE INJURY.** Safety glasses should be worn at all times while installing or maintaining this product

IMPORTANT PRE-INSTALLATION NOTES:

IMPORTANT: You must have factory original style hardware and bow system for this fabric top to fit your vehicle. If you are removing a hard top and replacing it with a soft top, you will need soft top hardware that is not included in this box for this fabric only top to fit. See your RT Off Road Distributor for the necessary hardware.

Required Tools for installation:

Safety Glasses	Masking Tape
Phillip's Head Screw Driver	T-15 Torx Driver or Bit
Pliers	

Before you begin installing this top please read through the instructions to get a general knowledge of how the soft tops are installed. Installers Tip: It is recommended to install the top when the fabric has been resting in temperatures above 75° F. Colder temperatures will shrink the soft components. It is recommended to lay the top components out in the sun or in a warm garage. Allowing the top components to warm will greatly ease the installation process.

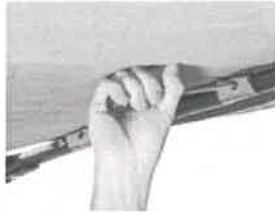
SOFT TOP INSTALLATION PROCEDURE

Step One: Remove your Old Top Fabric

1. Allow the vehicle to warm in the sun prior to removal of top. This will ease removal. Put on Safety Glasses.
2. Park the vehicle on a level surface and apply the e-brake. Un-latch the windshield header
3. Unzip and remove the rear window and the two side quarter windows.
4. Next remove the top from each rear corner by pulling down to release the fabric from the corner track retainers.
5. Un-screw the fabric from the rear bow and release the hook and loop flap from the center bow of the jeep.
6. Remove the fabric from the front header by folding the top completely down over the hood of the vehicle. Un-screw all header screws (19 or 27 screws depending on model year) and two corner screws. **SAVE THESE SCREWS!** Lift up the metal top plate and pull out the fabric from the header. See pictures below.
7. for 2013-2018 models you will need to peel back the corner foam and unscrew the cable attachment on both ends of the header using a T-15 Torx. See pictures below:



Remove Windows



Un-screw fabric from rear bow



Remove header screws



Remove corner Screws



Peel back foam to expose two screws which need to be removed. Save the screws

Leave hardware on the vehicle with your front header resting on the windshield.

Step Two: Install New Fabric to your Soft Top Hardware

Important Installation Note: The following header installation will be easier to accomplish with the help of another person. This step will most likely be the most difficult step in the install and you should take your time. The easiest way to install this header is standing on the front seats facing forward. We suggest placing a towel or cover on the seats to protect them from dirt and debris from your shoes. Once the soft top header fabric is installed in the factory header, the remaining installation should be very straight forward.



Fig 1

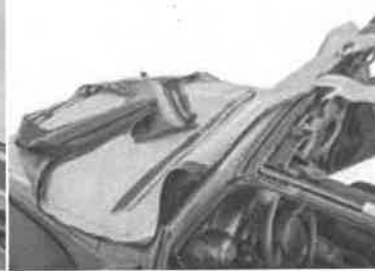


Fig 2

1. Install New Top Fabric to your Windshield Header. With the old top completely removed and the top header plate un-screwed from the lower header, raise the bow assembly and lock the header to the windshield (See Fig 1). As seen in Fig 2, drape the soft top fabric backing side up over the hood and the windshield and locate the front extrusion sewn into the front header of the Top. Locate the masking tape and have it ready for the next step.



Fig 3

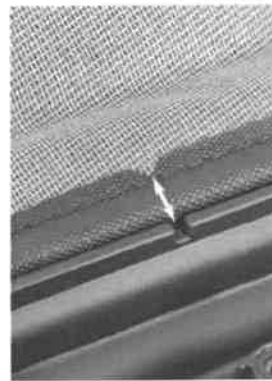


Fig 4

2. Centering the new fabric on the windshield header and securing it with tape. Slide the sewn in extrusion along the front edge of the top into the channel of the lower header that is secured to the windshield in step one (See Fig 3). Locate and line up the center notch in the middle of the fabric to the center of the channel centering the fabric on the lower header (Fig 4). Secure the fabric around the center notch with masking tape.



Fig 5



Fig 6



Fig 7

3. Working from the center out, secure the top in the lower header channel with masking tape holding it in place for installing the top plate to the lower header. Use 5-6 pieces of tape to hold the top in place (Fig 5). Note: The tape pieces will be completely covered when the top plate is put back on the lower header (Figs 6 & 7).



Fig 8



Fig 9



Fig 10



Fig 11

4. Close the upper header over the taped down fabric sandwiching the fabric but leaving the underside of the fabric faced up on the hood (See Fig 8). Using the screws you removed in step one, reinstall the four corner screws and then the 19 or 27 (depending on model year) screws along the top of the header. See Figs 9 & 10. Un-latch the bow assembly from the windshield (inside vehicle) and lower the bow assembly to the rear of the vehicle folding the top back over with the underside of the fabric facing down (see Fig 11).

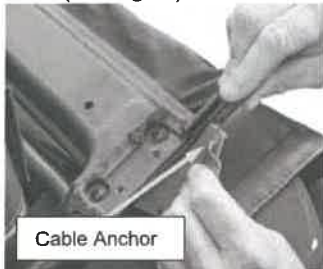


Fig 12



Fig 13

5. Slip the corner pocket sewn into the top between the header and position the cable anchors over the two holes with the cable facing the outside of the header (Figs 12 & 13). Note: on 07-09 models the screw holes may not line up exactly and some hole relocation may be required using a drill. Reinstall the cable anchor screws on each side of the header as shown in Fig 13

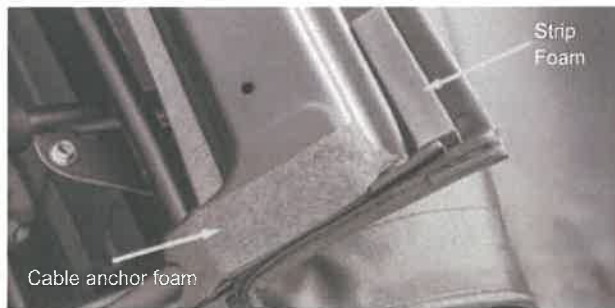


Fig 14

6. Locate the Header foam packet and attach foam over the installed cable anchors on each side of the header. Install the small "strip" foam on the front of the header as shown in Fig 14.



Fig 15

7. Drape the top fabric over the cab reinstalling and securing the bow assembly above the door. The front header should be resting on the windshield but not attached/clamped and the top fabric should be laid back but not attached to the rear bows. See Fig 15.

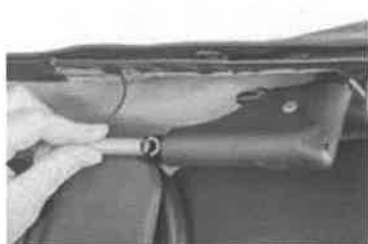


Fig 16



Fig 17



Fig 18



Fig 19

8. Securing the Cable Spring. Locate the Cable spring hanging out of the top behind the rear seat next to the rear vertical door surrounds. Fold back the front header to reduce the side cable tension. For 2013-2018 models the bracket is encased in a plastic "tube". As shown in Figs 17 & 18, slip the cable spring through the "tube" and attach it to the top bracket and using a set of pliers, crimp the spring end closed so it cannot be easily slipped off See Figs 18 & 19.



Fig 20

9. Flip the rear of the top forward exposing the center Bow. Install the Velcro Flap that attach the center bow. (Bow #1 over the sound bar). See Fig 20.

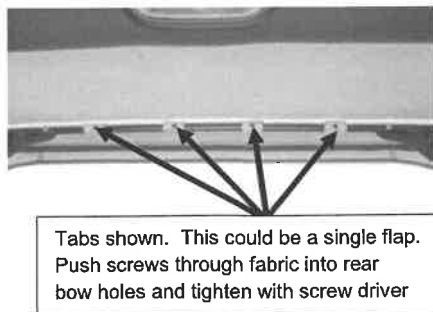


Fig 21



Fig 22

10. Reinstall the 4 screws that attach the rear bow through the fabric tabs or single horizontal flap (Bow #2 over rear window opening). Push the screw through the fabric and into the hole on the bow. There are no holes drilled into the fabric Flap. These screws are the ones previously removed from your original top. On some models the flap may have to wrap around the opposite side of the bow. regardless, the bow flaps should be tight. See Figs 21 & 22.



Fig 23



Fig 24

11. With all the bows attached to the top, pull down on the rear bow while securing the rear corners into the retainers on the vehicle. See Figs 23 & 24.



Fig 25



Fig 26



Fig 27

12. Secure Front of the Top to the windshield. With the cable spring installed, close the front header latches to secure the front of the top to the windshield. See Figs 25, 26 & 27.

Note: With the rear corners attached the first time you fold down the front header it will be **EXTREMELY TIGHT**. This is normal. We **highly** recommend that two people fold down the header simultaneously. This will prevent possible damage to the hardware system.

Caution: The leading edge of the soft top must be secured to prevent the loss of the top at speed. Latches must be fully closed and free of mud and other contamination. Do not use top if either latch is damaged.



Fig 28



Fig 29

13. Attach the quarter window zippers by starting the zipper on the quarter window and zipping it closed 2-3 inches. Repeat this on the other side of the vehicle. See Figs 28 & 29.



Fig 30



Fig 31

14. Attach the front of the quarter windows along the front edge of the vertical door surround by rolling the plastic into the slot on the door surround. Repeat on the opposite side of the top. See Figs 30 & 31.



Fig 32



Fig 33



Fig 34

15. Roll the bottom of the quarter window into the retainer channel on the vehicle and then close the quarter window zipper the rest of the way. Close up the hook and loop fasteners around the zippers. See Figs 32, 33 & 34.

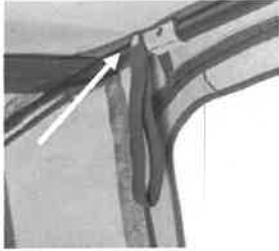


Fig 35



Fig 36

16. Snap the elastic window roll straps on the rear bow above the rear window opening. These straps can be used to secure your rear window when rolled up. See Figs 35 & 36



Fig 37



Fig 38



Fig 39



Fig 40

17. Locate the rear window and place it on a soft surface with the backing side up. Take the factory bar removed in step one and orient the "C" Channel with the round seal facing down and slide the "C" Channel onto the rear window retainer as shown in Figs 37 & 38. After sliding the retainer all the way through the "C" Channel, roll the tailgate bar into the mounts with the outside of the fabric facing towards the rear of the vehicle. See Figs 39 & 40.



Fig 41



Fig 42



Fig 43



Fig 44

18. Secure the rear window zippers by pulling the two zipper sliders all the way down as far as possible in order to catch the sliders on the zipper pin. Once the zipper is caught, raise the zipper 1"-2". Hold the top of the window with one hand and zip up the zipper all the way with the other hand. Make sure that the tailgate bar is centered. If the zippers have too much distance between the window and the top, slide the rear corners around towards the middle of the vehicle until the zippers can be closed. See Figs 41 & 42. Tuck the flaps under the window zippers into the retainers to secure the rear window. See figs 43 & 44.

WARNING: When operating the vehicle with the quarter windows removed, the rear window should be rolled up and secured with the elastic straps or completely removed for proper ventilation.

Your Soft Top Installation is now Complete

PRODUCT CARE

Washing: The fabric should be washed often using soap, warm water and a soft bristle brush. Rinse with clear water to remove all traces of soap. Never Wipe the soft top glass with a dry cloth. Always use a clean, wet soft cloth to clean soft top windows

Zippers: Keeping the zipper cleaned and lubricated with a silicone lubricant will help prevent damage and keep the zippers in a smooth working condition. If a zipper opens behind the slider, the slider may have been spread apart. This problem can usually be repaired by using an ordinary pair of pliers to bring the sides back into parallel. Return slider to the end of the zipper in the normal Open position. Squeeze lightly at first and test the zipper. If the zipper continues to remain open squeeze more firm with the pliers and try the zipper again. Repeat this procedure until the zipper operates correctly.

Snaps: Keep snaps cleaned and lubricated with silicone to help prevent snaps from sticking to the studs. If a snap does become stuck to a stud, use a screwdriver and GENTLY pry apart to prevent permanent damage to the snap or the top fabric.