

MSD INSTALLATION INSTRUCTIONS

Atomic LS Throttle Body PN 2940

ONLINE PRODUCT REGISTRATION: Register your MSD product online. Registering your product will help if there is ever a warranty issue with your product and helps the MSD R&D team create new products that you ask for! Go to www.msperformance.com/registration.

Thank you for purchasing the MSD LS Throttle Body. The throttle body is made of a cast aluminum housing which will provide flawless performance and reliability for years. The MSD throttle body can be used on four bolt throttle body mounting flange manifolds for a cable driven conversion.

Warning: The MSD throttle body is a 90mm throttle body, and it is not compatible with 102mm throttle body openings available with some aftermarket intake manifolds.

Parts Included:

1-Throttle Body
2-M4 x 8mm Screws
2-M4 x 12mm Screws
4-M6 x 25mm Bolts
4-.265 x .50 Washers

Parts needed but not included:

IAC Motor, PN 2942
TPS Sensor, PN 2946
Intake Manifold/Throttle Body Gasket
(AC-Delco PN 217-2424)

Note: The MSD Throttle Body is not supplied with sensors. MSD recommends the use of PN 2942 for the IAC motor and PN 2946 for the TPS sensor.

PREPARATION OF THE THROTTLE BODY

1. Place the Throttle Position Sensor (TPS) sensor onto the throttle body with the centering dowel in the locating hole (Fig 1).
2. Use a drop of blue Loctite on the M4 x 12mm screws, and secure the TPS to the throttle body. Torque the bolts to 16 in lb - 18 in lb.

INSTALLATION OF THE THROTTLE BODY

1. Make sure the mating surfaces of the throttle body and manifold are clean and free of debris.
2. If the old throttle body gasket is in good condition, reuse the old gasket. Otherwise, install a new throttle body gasket (AC Delco PN 217-2424).
3. Preassemble each M6 x 25mm bolt with a washer. Use a drop of blue Loctite on the bolts.
4. Install the throttle body onto the manifold and secure it with the M6 x25mm bolts. Hand tighten the bolts and torque them down to 89 in lb.
5. Place the Idle Air Control (IAC) motor into the throttle body.
6. Use the M4 x 8mm screws to secure the IAC motor to the throttle body. Torque the bolts to 25 in lb - 27 in lb.
7. Connect sensors, throttle cable, PCV hose and air inlet ducting as required.

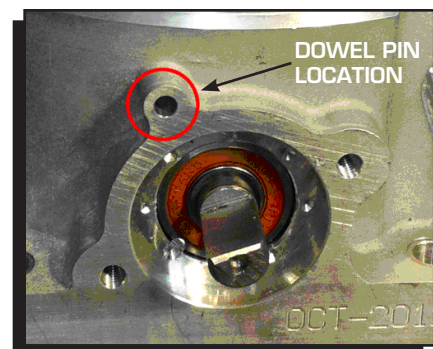


Figure 1 Dowel Pin Location.

