



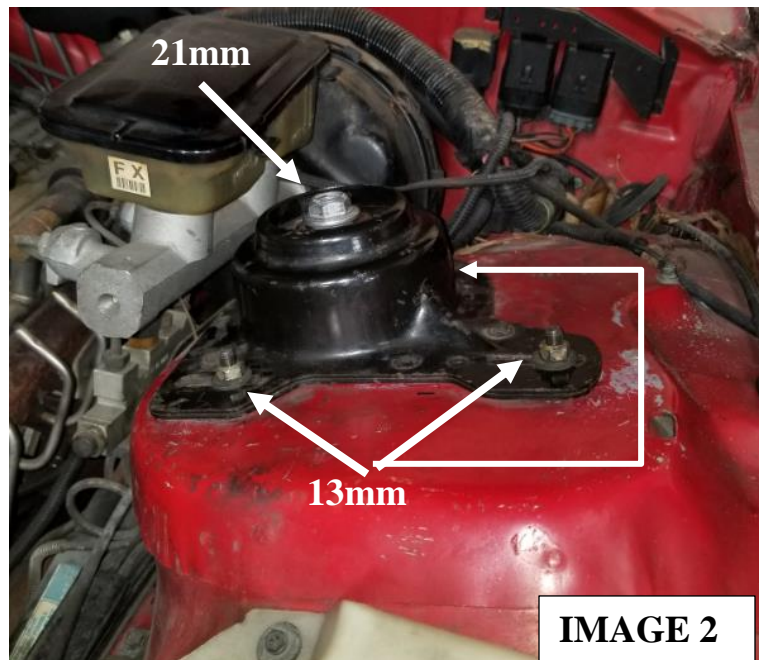
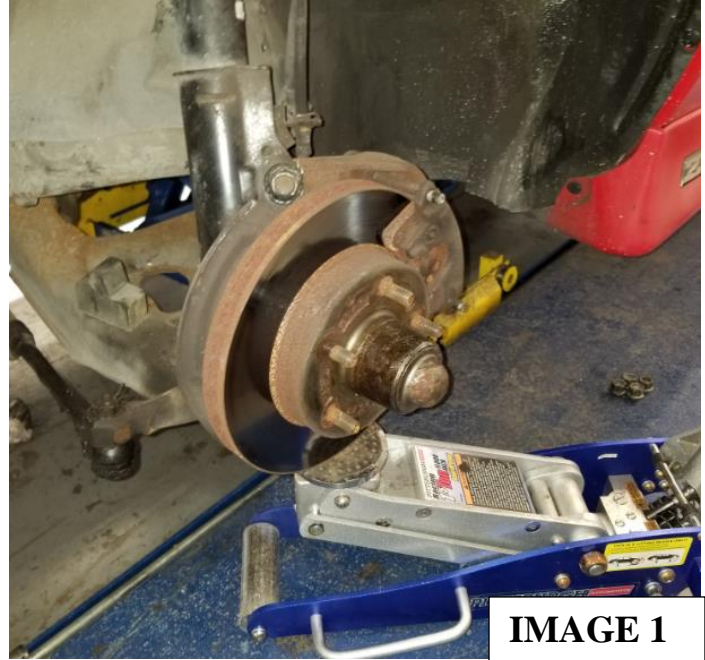
## WAK331 INSTALLATION INSTRUCTIONS

### Required tools:

- Basic hand tools and a socket set
- Hydraulic jack
- Jack stands

### Instructions:

- 1) Using a hydraulic jack, raise the front of the vehicle and secure on jack stand.
- 2) Remove front wheels and carefully use the hydraulic jack to slightly raise the lower control arm as shown in **IMAGE 1**. This will take tension of the upper strut mount. Do not lift the arm on the ball joint or any grease fitting, locate the jack on a strong portion of the arm. Be careful not to lift the car on the control arm, this is can cause the vehicle to fall.
- 3) Using a 21mm socket, remove the upper shock nut as in **IMAGE 2**.
- 4) Using a 13mm, remove the three (3) nuts holding the upper strut retention plate in place as in **IMAGE 2**.



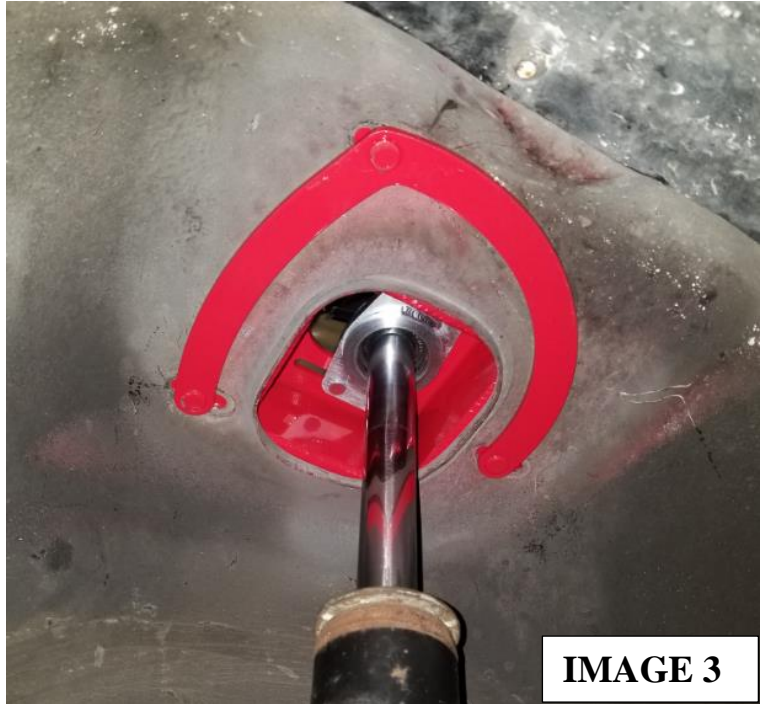
[WWW.BMRSUSPENSION.COM](http://WWW.BMRSUSPENSION.COM)

*This product is an aftermarket accessory and not designed by the vehicles manufacturer for use on this vehicle. As such, buyer assumes all risk of any damage caused to vehicle/person during installation or use of this product.*



## WAK331 INSTALLATION INSTRUCTIONS

- 5) Remove the upper strut mount and retaining plate.
- 6) Put the provided Aluminum shock spacer on the top to the shock shaft.
- 7) From the underside of the strut tower, center the mount with the opening as in **IMAGE 3**.
- 8) Reinstall the upper shock bolt to *50ftlbs*.
- 9) After setting your Camber and Caster, torque the four (4) upper nuts to *10 ftlbs* and the three (3) lower nuts to *15 ftlbs* as in **IMAGE 4**.



[WWW.BMRSUSPENSION.COM](http://WWW.BMRSUSPENSION.COM)

*This product is an aftermarket accessory and not designed by the vehicles manufacturer for use on this vehicle. As such, buyer assumes all risk of any damage caused to vehicle/person during installation or use of this product.*