



INSTALLATION INSTRUCTIONS
152650BK
1.5" LIFT KIT

300 W. Pontiac Way Clovis, CA 93612 toll free: 1-800-445-3767 web: www.belltech.com

2021+ FORD BRONCO SPORT

Thank you for being selective enough to choose our high quality BELLTECH PRODUCT. We have spent many hours developing our line of products so that you will receive maximum performance with minimum difficulty during installation

Note: Confirm that all of the hardware listed in the parts list is in the kit. Do not begin installation if any part is missing. Read the instructions thoroughly before beginning this installation.

Warning: **DO NOT** work under a vehicle supported by only a jack. Place support stands securely under the vehicle in the manufacturer’s specified locations unless otherwise instructed.

Warning: **DO NOT** drive vehicle until all work has been completed and checked. Torque all hardware to specified values.

Reminder: Proper use of safety equipment and eye/face/hand protection is absolutely necessary when using these tools to perform procedures!

Note: It is very helpful to have an assistant available during installation.

Exceptional Customer Experience Guarantee:

STOP! We strive for an exceptional experience for all of our valued customers. If, for any reason, you need assistance with your Belltech products, please do not return the products to the store or website you purchased from. Please call our dedicated experts at (1-800-445-3767) from 7am to 5pm PST.

RECOMMENDED TOOLS:

- Properly rated floor jack and support stands
- Wheel chocks
- Torque wrench up to 200 ft/lbs
- Metric & Standard socket wrench set
- Metric & Standard wrench set
- Tape measure
- Dead blow hammer
- Marking pen
- Safety Glasses
- Angle Grinder
- Spray Paint



DIFFICULTY:



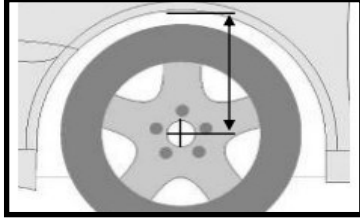
INSTALLATION TIME: 3-5hrs + Alignment

152650BK KIT CONTENTS			
PART NUMBER	SUB PART NUMBER	DESCRIPTION 1	QTY
152650-122-99		Front Swaybar Link	2
152650-113-99		Front Sway Drop Down Brkt	2
152650-120-99		Front Strut Spacer	2
152650-200-99		Rear Coil Spacer	2
152650-202-99		Rear Trailing Arm Drop Spacer	4
152650-777A		Hardware kit	1
	112301	SERRATED BOLT M8 x 1.25 x 25mm	6
	110225	M12 x 1.75x30mm	2
	112302	NUT SERRATED M12 x 1.75	2
	112303	SERRATED BOLT M14 x 2.0 x 70mm	4
	112306	WASHER OVERSIZED M6	4
	112289	Rod End	4

INSTALL PREPARATION

- a) Before beginning the install process, measure the hub to fender heights for your vehicle so you can compare the resulting height to the original. Measure vertically from the center of the wheel to the inner edge of the fender. Record the results here:

LF: _____ RF: _____ LR: _____ RR: _____



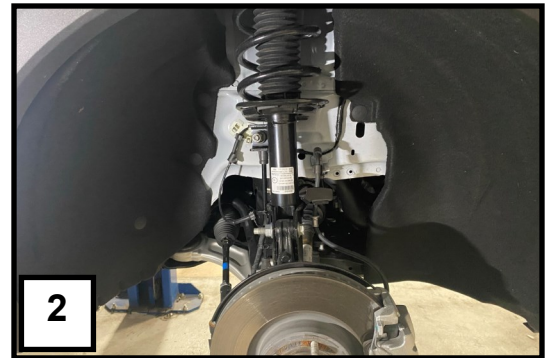
- a) Park the vehicle on a smooth, level concrete or seasoned asphalt surface and activate the parking brake. Block the rear wheels of the vehicle with appropriate wheel chocks; making sure the vehicle's transmission is in 1st gear (manual) or "PARK" (automatic)

! It is very important that the vehicle is properly supported during this installation to prevent personal injury and chassis damage. Raise the vehicle with a lift or jack following the appropriate safety procedures. Make sure that support stands are properly placed prior to performing any of the following steps. **WHEEL RAMPS ARE NOT RECOMMENDED FOR THIS INSTALLATION !**

The following steps are only designed to be used on an otherwise unmodified vehicle using the appropriate BELLTECH Parts. If using in conjunction with other aftermarket parts, the alignment and results cannot be guaranteed. If installing on a modified vehicle please use the appropriate installation procedure for your specific vehicle build at your own discretion.

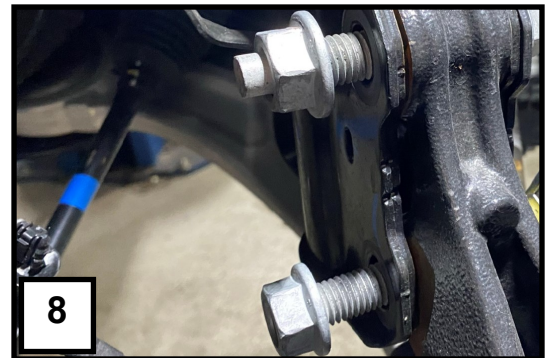
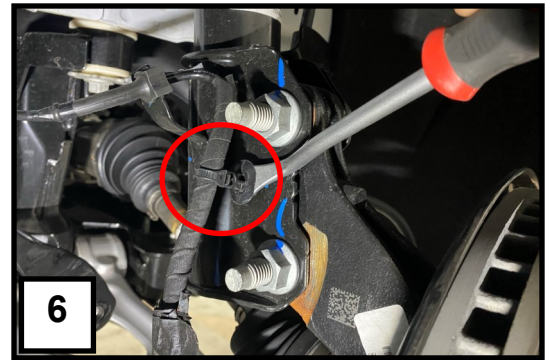
FRONT LIFT INSTALLATION INSTRUCTIONS

- a) Lift the hood and remove the Strut top covers by first removing the 6 cowl retaining clips. This will grant access to one of the two 10mm bolts securing the Strut top cover onto the body of the vehicle. Shown with the red arrow. Remove the two bolts using a 10mm socket, and carefully remove the strut top cover from the vehicle. **(PHOTO 1)**
- b) Dismount the wheels after removing the lug nuts. **(PHOTO 2)**
- c) Disconnect the tie rod by removing the nut using a 15mm wrench or socket. Carefully strike the top of the Tie rod to dislodge it. **(PHOTO 3)**
- d) Using an 18mm Wrench, remove the sway bar from its locations mounting to the strut and sway bar. A t40 Torx may be needed to hold the pin. **(PHOTO 4 & 5)**



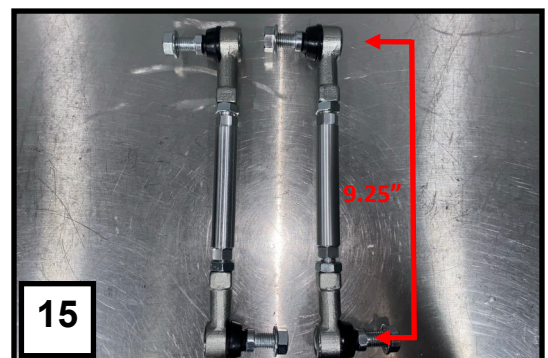
FRONT LIFT INSTALLATION INSTRUCTIONS

- e) Using a plug or panel popper remove the ABS line from its mounting position on the strut, as well as unhooking it from the inner fender-well. **(PHOTO 6)**
- f) Using an 8mm wrench, remove the brake line mount from the strut. **(PHOTO 7)**
- g) Remove the Nuts from the lower strut mounting bolts in the Clevis. Use a 21mm socket. Strike the bolts to dislodge them from the clevis mount. The Bolt head has a "press in fit" and will not spin or break free without some force. **(PHOTO 8)**
- h) Using a 13mm socket, remove the 3 bolts holding the strut to the vehicle from the engine bay side. Be careful to support the strut so as to prevent it from falling and damaging the chassis or causing injury. **(PHOTO 9)**
- i) The back sides of the strut bottoms will need to be trimmed to create clearance for the axle under full droop. Mark the area as shown in the image, and trim back using an angle grinder. Be careful not to grind too much, to prevent from compromising the structure of the damper. Upon installation, turn the knuckle both ways under full extension to determine if more area will need to be trimmed **(PHOTO 10)**



FRONT LIFT INSTALLATION INSTRUCTIONS

- j) After trimming the strut should look similar to the image. Do not reinstall the strut without coating and protecting the trimmed area. Failure to do so will cause corrosion. Use a weather resistant spray paint for metal to coat the area trimmed. **(PHOTO 11)**
- k) Install the Belltech strut top spacer to the strut using the OEM hardware. **(PHOTO 12)**
- l) Reinstall the Strut and spacer combo to the Vehicle and fasten the Top of the strut to the vehicle using the supplied M8x1.25 bolts. **(PHOTO 13)**
- m) Install the L shaped sway bar drop down brackets to the strut using the supplied M12x1.75mm bolt and nut. This bracket prevents the end link from making contact with the strut tower during steering. **(PHOTO 14)**
- n) The adjustable Belltech end link should be set to a length of approximately 235mm. The length may need to be adjusted further. **(PHOTO 15)**



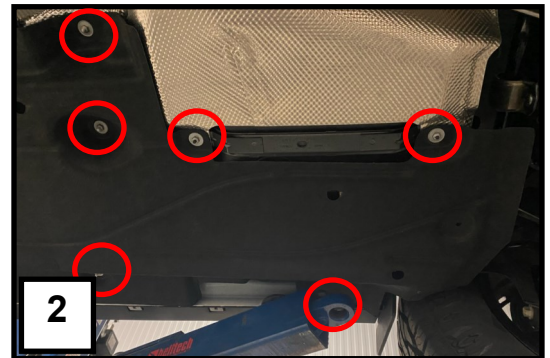
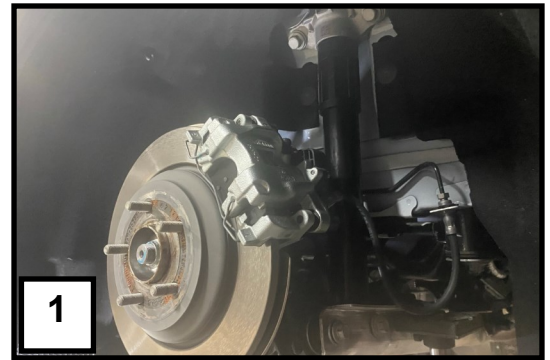
FRONT LIFT INSTALLATION INSTRUCTIONS

- o) When reinstalling the Brake line to the Strut, make sure to include the oversized M6 washers (2 per side). This will allow for more slack in the Brake line as the front suspension hits full extension. **(PHOTO 16)**
- p) The rest of the front install is the reverse process of deinstallation. Make sure to torque all hardware to factory specifications before moving to the rear installation.



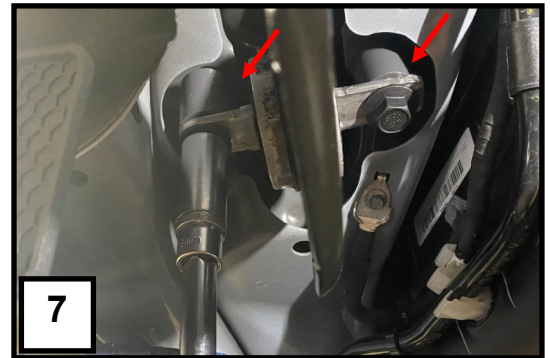
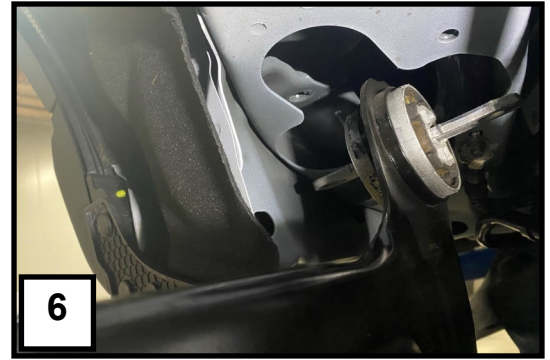
Rear Lift Installation Instructions

- a) With the rear of the vehicle raised, Remove the wheels. **(PHOTO 1)**
- b) Remove the fasteners with a 10mm socket and panel popper and allow the plastic cover to droop. Repeat this for the other side. More fasteners may need to be removed to gain access to the rear trailing arm mounting bolts. **(PHOTO 2)**
- c) Support the control arm and remove the two 15mm bolts from the locations shown in the image. Then allow the control arm to droop. **(PHOTO 3)**
- d) Loosen the control arm bolts but do not remove, to allow the trailing arm/ hub and brake combo to droop more easily. **(PHOTO 4)**
- e) Push down on the control arm to free the spring from the control arm, a flathead screwdriver may be needed to remove the lower spring pad from its location. **(PHOTO 5)**



Rear Lift Installation Instructions

- f) With the rest of the suspension moving more freely it is easier to work on the trailing arm mounts. Ensure that everything is supported well and will not swing or fall causing injury or damage. Remove the trailing arm mount bolts with a long extension. **(PHOTO 6)**
- g) Install the trailing arm drop spacers between the mount and the body of the vehicle and secure with the supplied M14 Bolts. Tighten to OEM specifications or a recommended 140ft-lbs. **(PHOTO 7)**
- h) Install the OEM lower spring pad to the Belltech rear lift spacer aligning the locator nipple to the hole in the spacer as shown. **(PHOTO 8)**
- i) Install the rear lift spacer with the OEM spring pad to the lower rear control arm in its original position. **(PHOTO 9)**
- j) Using a jack, raise the lower control arm and reinstall 2 bolts removed in step c. **(PHOTO 9)**
- k) Do not forget to re-tighten the control arm bolts loosened to allow free movement of the suspension components in step d.
- l) The rest of the rear install is the reverse process of deinstallation. Make sure to torque all hardware to factory specifications.



POST INSTALL

- a) Check that all components and fasteners have been properly installed, tightened and torqued
- b) Check brake hoses and other components for any possible interference
- c) Lift the vehicle, and remove the support stands. Carefully lower the vehicle to the ground. Torque the wheels.
- d) Test drive the vehicle in a remote location so that you can become accustomed to the revised driving characteristics and handling.
- e) Installation is complete. Check all of the hardware and re-torque at intervals for the first 10, 100, and 1000 miles.