

2007 Chevy Tahoe

Set Part # 40936
Revision A 05-01-06

Step 1:

Prior to Installation:

- A) **Fit:** Verify the fit of the flares to vehicle. (Some filing, sanding, or cutting may be necessary to ensure proper fit).
- B) **Painting:** (Optional) if paint is desired it must be done prior to installing flares on the vehicle clean outer surface with a good grade degreaser. **DO NOT USE LACQUER THINNER OR ENAMEL REDUCER AS A DEGREASER.** Wipe outer surface thoroughly with a tack rag prior to paint. Paint flares using a high quality enamel, or polyurethane automotive paint. (Application of a primer coat is optional) If painting edge trim (not recommended), use a flex additive.
- C) **Performance:** Using larger Tires may increase the area required to turn the vehicle. Some Tire/Rim combinations may require lowering bump stops and or installing steering stops to prevent tire from contacting flare.
- D) **Exhaust System:** Modifications may be necessary to maintain a minimum 4" clearance between flares and exhaust pipes. (Exhaust gases should not vent directly onto flares)
- E) **Metal Protection:** All exposed fasteners and bare metal should be treated with red oxide primer BEFORE installing flares. Spray inner fender wells with undercoating AFTER flare attachments have been completed.



TOOLS FOR EASY INSTALLATION

- 9/32" Socket
- Flat Head Screwdriver
- Grease Pencil
- Alcohol Wipes
- Drill
- 5/16" Drill Bit

FLARE INSTALLATION PROCEDURES

Step 2: Edge Trim Installation (See Illustration #1)

- A) Peel two to three inches of red vinyl backing away from edge trim tape. Applying the adhesive side of the edge trim to the inner side of the flare, affix the edge trim to the top edge of the flare (the portion that comes in contact with the vehicle). **See Illustration #1**
- B) Press edge trim into place along the top edge of the flare in one-foot increments, pulling red vinyl backing free as you continue to work your way around the top edge of the flare.

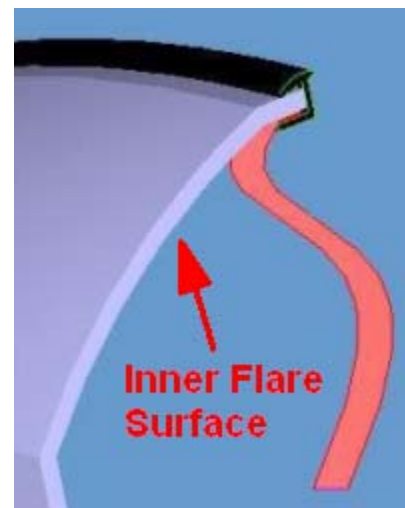


Illustration #1

Step 3: Front Flare Installation (See Photos #1 through #6)



1

Remove
Screws

Using a 9/32" socket, remove two factory screws. Retain screws for later use.



2

Holding flare in position on fender, install two supplied Plastic Tuf-loks.



3

Tuf-Loks

Tuf-lok locations.



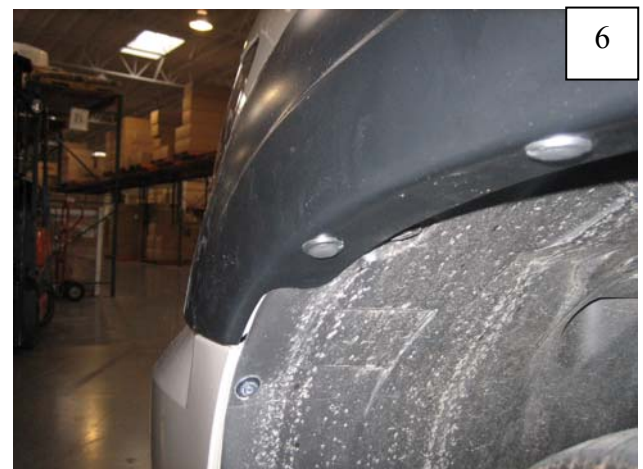
4

Reinstall factory screws removed in Step 1.



5

Using hole located in forward portion of flare as a guide, drill through the splash shield with a 5/16" bit. Holes in flare and splash shield should align with factory hole located in fender.



6

Install a supplied Plastic Tuf-lok through forward hole in flare.

Step 4: Rear Main Fender Flare Installation (See Photos #7 through #11)



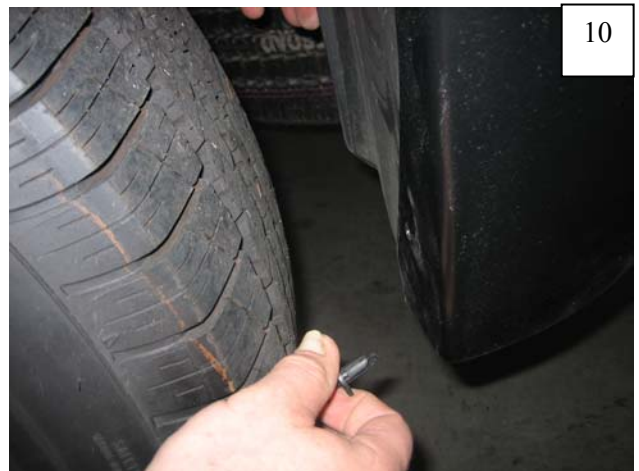
Using a flat head screw driver, remove one factory plastic retainer and discard.



Using a 9/32" socket, remove two factory screws. Retain screws for later use.



Holding flare in position on fender, reinstall factory screws removed in Step 8.



Install three supplied Plastic Tuf-loks in remaining holes in flare.



Tuf-Lok locations.

Step 5: Rear Door Piece Installation (See Photos #12 through #22)



Clean door surface with an alcohol wipe.



Position Door Piece correctly on door. Using a grease pencil, trace outline of flare on door.



Open door. Break supplied Adhesion Primer Ampoule to allow primer to saturate applicator tip.



Using the outline traced in Step 14 as a guide, apply primer to door in areas that tape pads will contact (about two ampoules will be needed per side).
WARNING: DO NOT APPLY PRIMER ABOVE AREA TO BE TAPED!



Peel the red liner entirely from the CENTER tape pad. Peel 2" of liner from each of the other two tape pads, folding out to form tabs.



Hold the part at an angle to prevent tape from prematurely sticking, and align part on the door. Make sure liner is protruding from part for ease of removal.



Confirm placement of the part. Gently pull the tape liner from the tape, starting with the top tab you created.



Open the door and gently pull the bottom tape tab you created.



Apply firm pressure to taped areas for proper bond. Tape reaches maximum adhesive bond after 24 hours of contact. Do not wash vehicle until 24 hours have passed.



Using supplied Edge Trim Tool, seat edge trim against vehicle by hooking curved end under edge trim at one end of flare and slide around outer edge of flare to the other end.



Using flat end of supplied Edge Trim Tool, seat edge trim against flare by inserting straight end between edge trim and flare at one end and slide around entire edge to the other end.