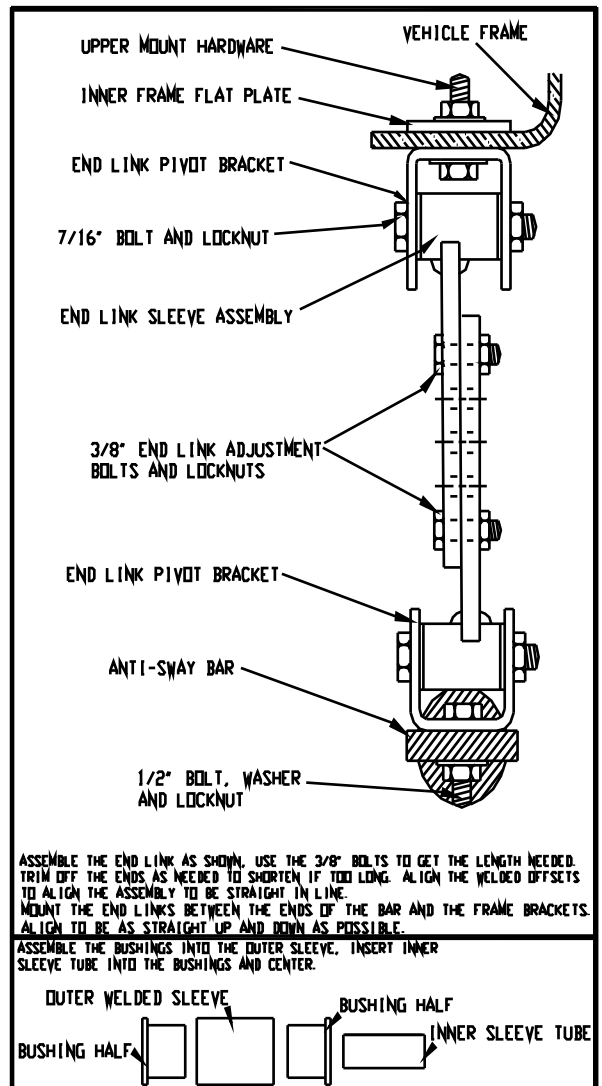
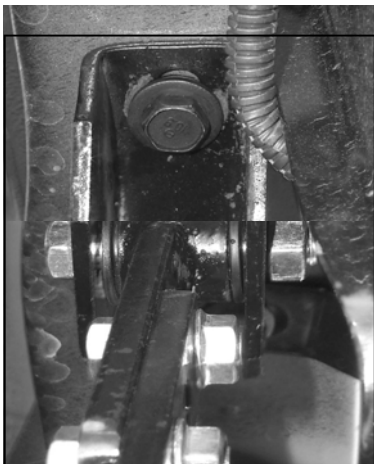
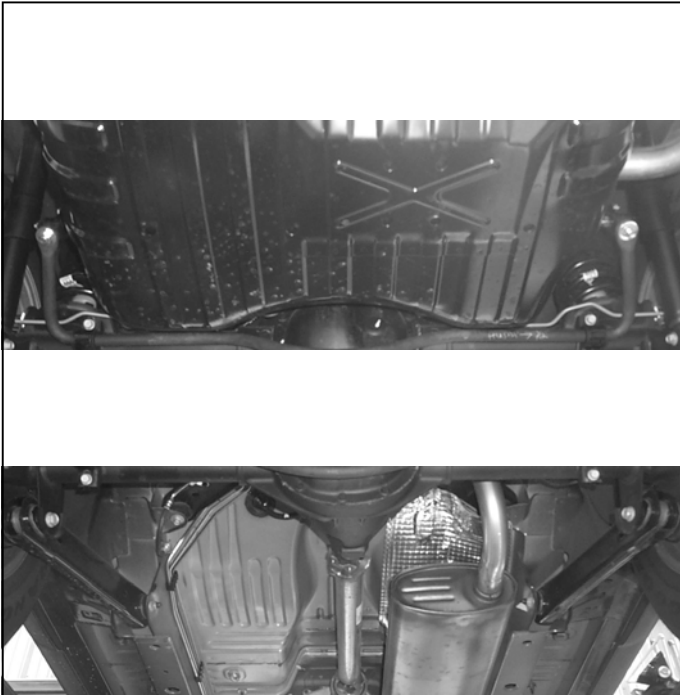


# Hellwig PRODUCTS.com

559-734-7451 800-367-5480 FAX 559-734-7460

## INSTALLATION INSTRUCTIONS REAR STABILIZER BAR 99-04 GRAND CHEROKEE

Thank you for purchasing a quality Hellwig Product.  
PLEASE READ THIS INSTRUCTION SHEET COMPLETELY BEFORE STARTING YOUR INSTALLATION



# Hellwig PRODUCTS.com

559-734-7451 800-367-5480 FAX 559-734-7460

**SAFETY: BEFORE STARTING YOUR INSTALLATION, BE SURE TO SET PARKING BRAKE AND CHOCK THE TIRES.**

**NOTE: THIS ANTI-SWAY BAR IS DESIGNED TO REPLACE THE FACTORY INSTALLED SWAY BAR.**

**NOTE: THIS SWAY BAR IS TO BE MOUNTED ON THE REAR OF THE AXLE WITH THE HUMP OVER THE DIFFERENTIAL COVER SLIGHTLY BENT TOWARDS THE GROUND, AND THE ARMS POINTING TOWARDS REAR OF THE VEHICLE.**

**NOTE: THIS KIT INCLUDES LOCKNUTS WHICH REQUIRE TIGHTENING WITH A WRENCH AFTER BEING STARTED BY HAND.**

## TORQUE TABLE

**BOLT SIZE: 3/8" = 20-30 ft. lbs. - 7/16" = 35-45 ft. lbs. - 1/2" = 50-70 ft. lbs. - 9/16" = 70-90 ft. lbs.**

1. Remove the factory installed rear sway bar and all the mounting hardware. Keep all the mounting hardware attaching the sway bar to the vehicle. This hardware will be reused to install the new sway bar.
2. Install the D-shaped polyurethane bushings on the sway bar in as close as possible location that the bushings are on the factory sway bar. Install the U-plates over the D-bushings with the mounting hardware that was removed from the axle. Attach the sway bar on the axle in the same location that the factory bar was removed from. **Leave loose at this time to allow for adjustment later.**
3. **As per the diagram.** Assemble the end links by installing the sleeve type poly-bushings. Lightly grease the poly-bushing and steel sleeve before installing into the welded end of the end link. Place the small steel sleeve inside the bushings to complete this end of the assembly. A hammer can be used to push the sleeve completely through the bushing. **Be careful not to damage the bushings or sleeves.**
4. Use the 1/2" bolt, washer and locknuts that are provided to attach the small U-shaped brackets to the arms of the sway bar. Leave these brackets loose to this time to allow for adjustment later.
5. Attach the larger U-brackets to the frame rail in the same location as the factory brackets using the factory mounting hardware. Mount the remaining two end link halves to the brackets and connect the end links together using the 3/8" bolts and locknuts that are provided. Be sure to use two bolts per end link. Use the various holes on the end links to adjust the length of the end link halves for best possible fit. **Leave loose at this time to allow for adjustment.**
6. Align the sway bar under the vehicle to be as centered as possible and so that the end links are as even from side to side as possible. The end links will allow a wide range of pivot and do not need to be straight up and down front to rear.
7. With all the adjustments completed tighten all the mounting hardware to the specified torque rate. Bounce the vehicle and check for clearance on all undercarriage components etc. shocks, spare tire, fuel tank, exhaust, brake and fuel lines. Test drive the vehicle and recheck your installation readjust in needed. After one week of driving recheck your installation. Recheck on a monthly regular basis thereafter.

**ATTENTION INSTALLER: BE SURE THAT THE CUSTOMER RECEIVES THIS INSTRUCTION SHEET, ALL IMPORTANT NOTE CARDS AND THE WARRANTY FORM**

# Hellwig PRODUCTS.com

559-734-7451 800-367-5480 FAX 559-734-7460

## PARTS LIST

RSB #7644  
"99-04" GRAND CHEROKEE

PART #	QTY	DESCRIPTION
20217644	1	(7/8") SWAY BAR
20800822	2	U-PLATE
111000206	2	(7/8") POLY BUSHING
20800797	2	FRAME BRACKET
20800789	2	CLEVIS BRACKET
20800774	4	WELDED END LINK
<b>125000853</b>	<b>1</b>	<b>SLEEVE BUSHING BAG # BG-853</b>
111000853	8	(5/8") POLY BUSHING
20800722	4	STEEL SLEEVE
<b>125000140</b>	<b>1</b>	<b>SMALL PARTS BAG # BG-140</b>
105521044	2	(1/2") HEX NUT
102520043	2	(1/2") FLAT WASHER
101500307	2	(1/2" X 1-1/4") CAP SCREW
102420041	4	(7/16") FLAT WASHER
107401042	4	(7/16") LOCK NUT
101500185	4	(7/16" X 2-1/4") CAP SCREW
107302003	4	(3/8") STOVER LOCK NUT
101500008	4	(3/8" X 1") CAP SCREW
135000340	1	INSTRUCTION SHEET R-7644 (R-340)