

# Hellwig PRODUCTS.com

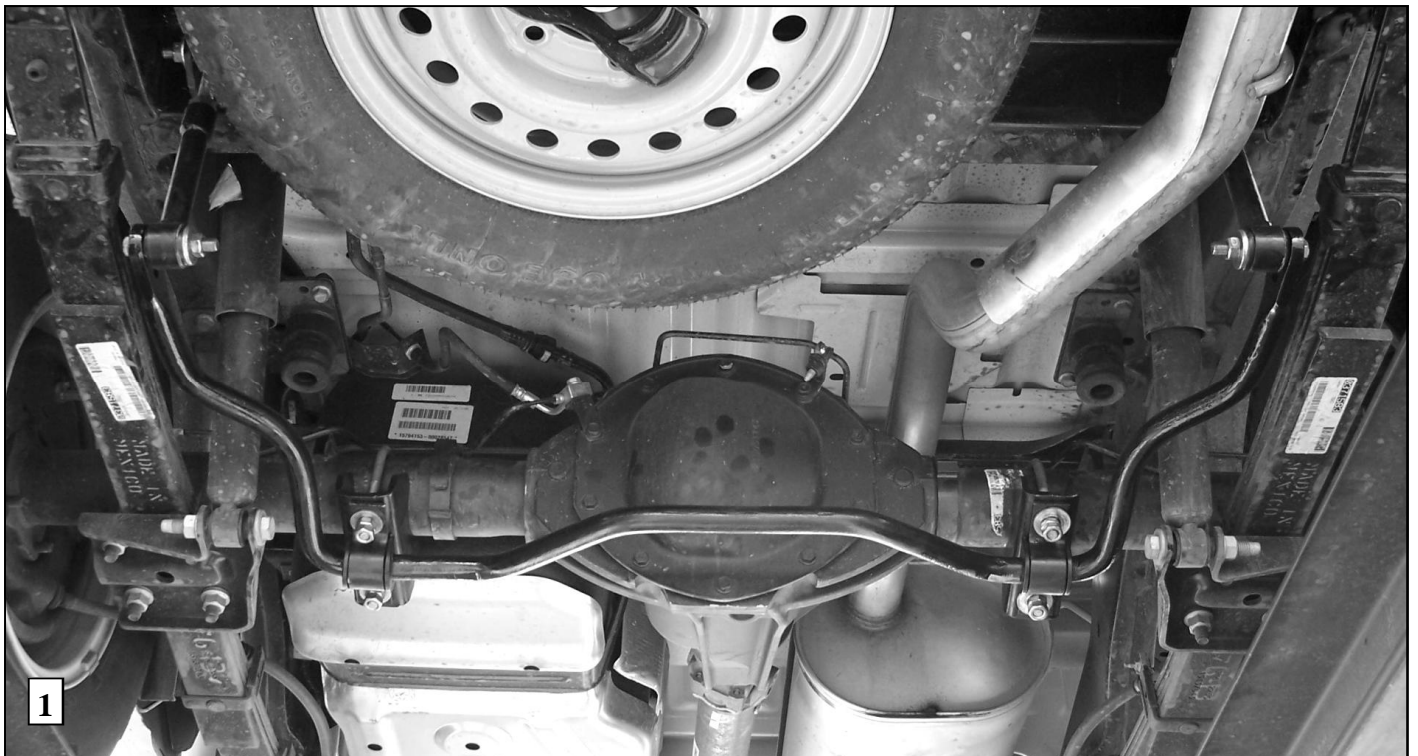
559-734-7451 800-367-5480 FAX 559-734-7460

## INSTALLATION INSTRUCTIONS

### Rear Stabilizer Bar

2004+ Colorado/Canyon w/o Factory Rear Sway Bar

Thank you for purchasing a quality Hellwig Product.



# Hellwig PRODUCTS.com

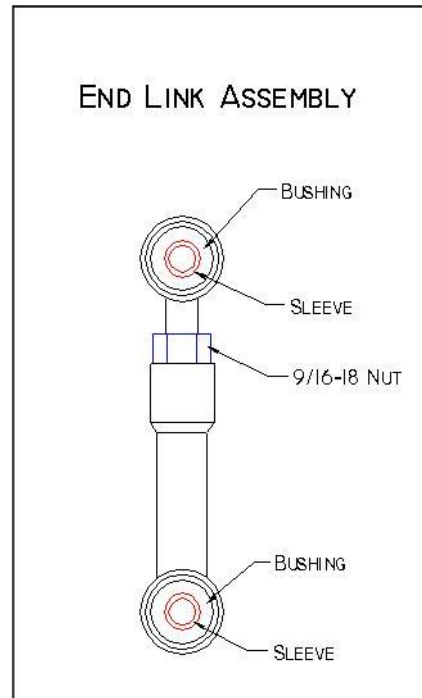
559-734-7451 800-367-5480 FAX 559-734-7460

## INSTALLATION INSTRUCTIONS

### Rear Stabilizer Bar

#### 2004+ Colorado/Canyon w/o Factory Rear Sway Bar

Thank you for purchasing a quality Hellwig Product.



#### TORQUE TABLE

**BOLT SIZE:** 3/8" = 20-30 ft. lbs. - 7/16" = 35-45 ft. lbs. - 1/2" = 50-70 ft. lbs. - 9/16" = 70-90 ft. lbs.

**SAFETY: BEFORE STARTING YOUR INSTALLATION, BE SURE TO SET PARKING BRAKE AND CHOCK THE WHEELS.**

**NOTE: TO EASE INSTALLATION AND TO PROPERLY ADJUST BAR, THE WEIGHT OF THE VEHICLE MUST BE ON THE SUSPENSION, AS IF DRIVING DOWN THE ROAD. DO NOT RAISE THE VEHICLE BY FRAME.**

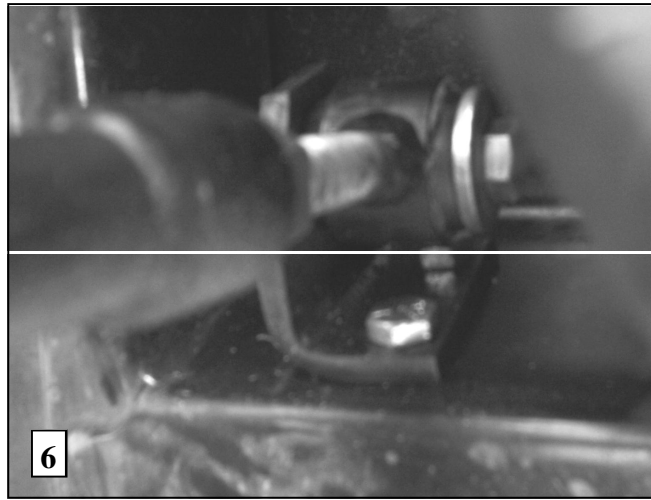
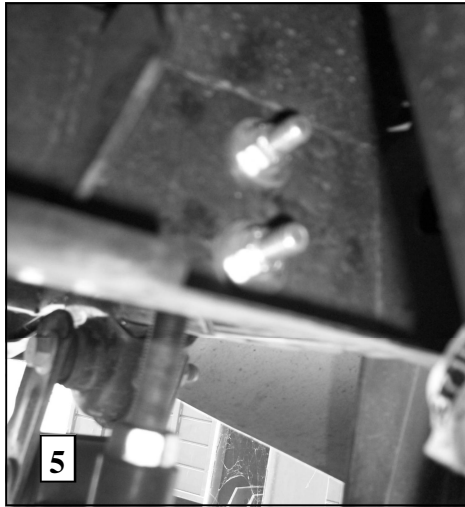
**NOTE: THIS UNIT IS DESIGNED TO REPLACE THE FACTORY INSTALLED REAR ANTI-SWAY BAR OR AS AN ADDITION IF THE REAR ANTI-SWAY IS NOT FACTORY SUPPLIED.**

**NOTE: THIS KIT INCLUDES LOCK NUTS WHICH REQUIRE TIGHTENING WITH A WRENCH AFTER BEING STARTED BY HAND.**

1. Lubricate the D-shaped poly-bushings and place onto the straight areas of the bar on each side of the center clearance hump as shown in photo 1. Locate the bushings as close to the bend as possible to keep the bar from shifting side-to-side.
2. Place the U-bolts over the axle in the approximate position on the axle required to mount the bushings. **Be sure to avoid pinching brake lines, emergency brake cables, electrical harnesses, etc. with the installation of the U-bolt.**
3. Install the U-bolt legs through the saddles and place the U-plates over the bushings on the bar. Mount the sway bar to the axle using attached hardware. See Photo 3. **Snug the nuts enough to hold the sway bar in position but loose enough to allow for adjustment later.**
4. Assemble the end links as shown in diagram above. Lubricate the hourglass bushings and sleeves to aid installation.
5. Locate end links on sway bar as shown in Photo 2. Attach end links to sway bar using the 7/16 X 2-3/4 " bolt and heavy washer as shown in Photos 2&4.

# Hellwig PRODUCTS.com

559-734-7451 800-367-5480 FAX 559-734-7460



6. Assemble the angle brackets to the end links as shown in Photos 4,5,&6. The angle brackets will attach to the wall of the shock crossmember.
7. Align the sway bar and end links on the vehicle to match the photos. **Make sure that the sway bar installation will not interfere with any suspension or exhaust components.** The end links are adjustable to accommodate various ride height and mounting preferences. When the end links and sway bar are properly aligned, locate and mark the holes for the angle brackets.
8. Drill 13/32" holes for the angle brackets and mount angle brackets as shown in Photos 5&6 using the 3/8" bolts and hardware. It may be necessary to remove the spare tire and disconnect the exhaust pipe hanger for clearance while drilling holes.
9. Torque all mounting hardware to spec. Double nut the axle U-bolts after tightening to spec.
10. Re-install spare tire and re-connect exhaust pipe hanger (if required).
11. The sway bar arms have two mounting holes. Mounting the sway bar on the outer hole is the nominal position. For firmer settings, use the inner holes. We recommend starting with the outer mounting hole as in photo ( 2 ) until you are accustomed to the vehicles new handling characteristics. Select the mounting point that best fits your driving style.
12. Bounce the vehicle checking for clearance on all undercarriage components shocks, exhaust etc... test drive the vehicle and recheck your installation. **Recheck periodically on a regular basis thereafter.**

**ATTENTION INSTALLER: BE SURE THE CUSTOMER RECEIVES THIS INSTRUCTION SHEET, ALL WARNING AND NOTE CARDS AND THE WARRANTY FORM.**