

GROSS LOAD CAPACITY WHEN USED AS A WEIGHT CARRYING HITCH: 3,500 LBS. TRAILER WEIGHT & 300 LBS. TONGUE WEIGHT.

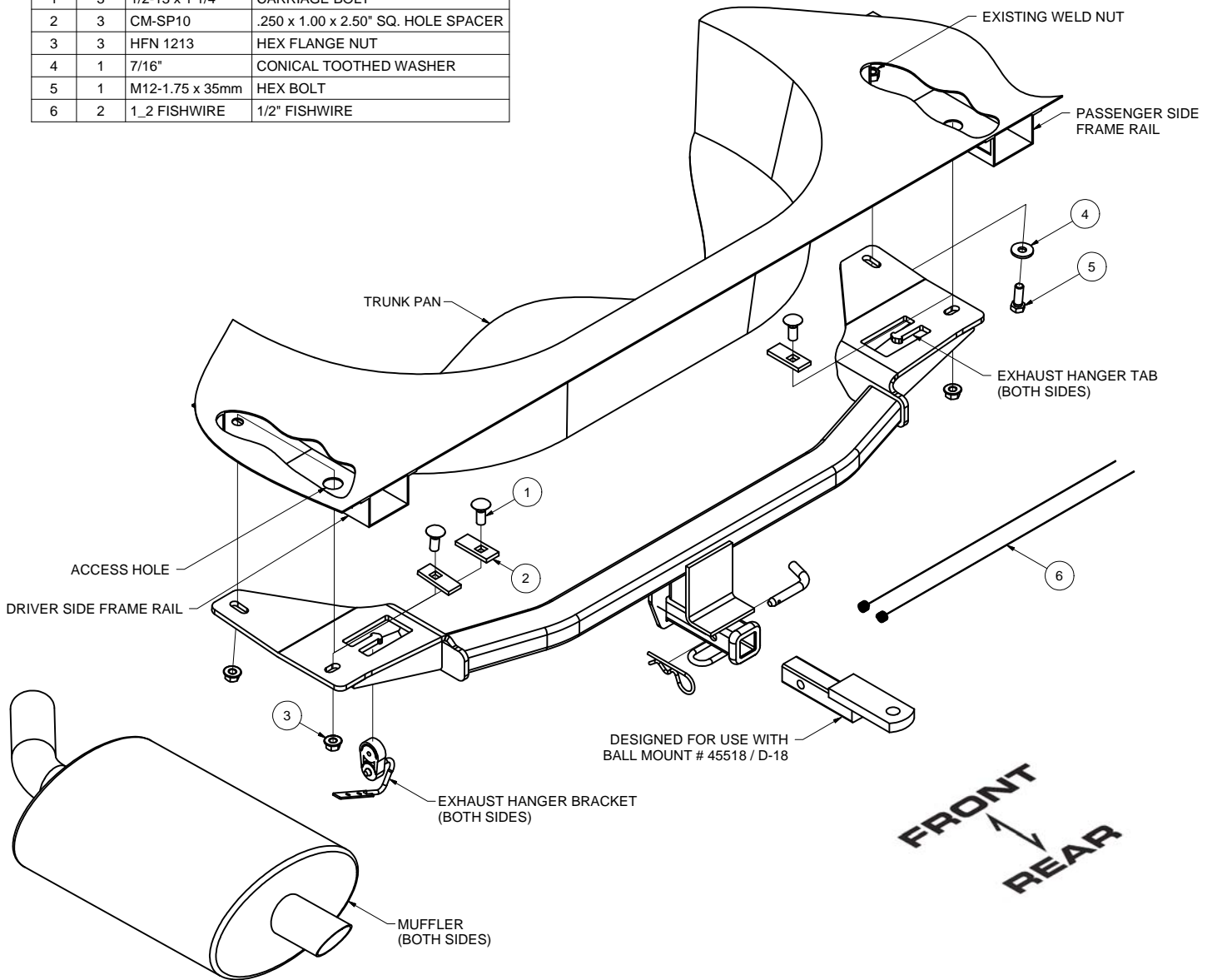
\*\*\*DO NOT EXCEED VEHICLE MANUFACTURER'S RECOMMENDED TOWING CAPACITY.\*\*\*

**WARNING: ALL NON-TRAILER LOADS APPLIED TO THIS PRODUCT MUST BE SUPPORTED BY AUXILIARY STABILIZING STRAPS.**

\*\* FAILURE TO PROPERLY SUPPORT NON-TRAILER LOADS WILL VOID PRODUCT WARRANTY\*\*

HAVING INSTALLATION QUESTIONS? CALL TECHNICAL SUPPORT AT 1-800-798-0813

Parts List			
ITEM	QTY	PART NUMBER	DESCRIPTION
1	3	1/2-13 x 1 1/4	CARRIAGE BOLT
2	3	CM-SP10	.250 x 1.00 x 2.50" SQ. HOLE SPACER
3	3	HFN 1213	HEX FLANGE NUT
4	1	7/16"	CONICAL TOOTHED WASHER
5	1	M12-1.75 x 35mm	HEX BOLT
6	2	1_2 FISHWIRE	1/2" FISHWIRE



HITCH WEIGHT: 40 LBS.

INSTALL TIME

PROFESSIONAL: 30 MINUTES

NOVICE (DIY): 60 MINUTES

INSTALL NOTES:

- NO DRILLING REQUIRED
- LOWER EXHAUST

**TOOLS REQUIRED**

10, 18 AND 19mm SOCKETS

8" EXTENSION

RATCHET

TORQUE WRENCH

PERIODICALLY CHECK THIS RECEIVER HITCH TO ENSURE THAT ALL FASTENERS ARE TIGHT AND THAT ALL STRUCTURAL COMPONENTS ARE SOUND.

Curt Manufacturing Inc., warrants this product to be free of defects in material and/or workmanship at the time of retail purchase by the original purchaser. If the product is found to be defective, Curt Manufacturing Inc., may repair or replace the product, at their option, when the product is returned, prepaid, with proof of purchase. Alteration to, misuse of, or improper installation of this product voids the warranty. Curt Manufacturing Inc.'s liability is limited to repair or replacement of products found to be defective, and specifically excludes liability for incidental or consequential loss or damage.

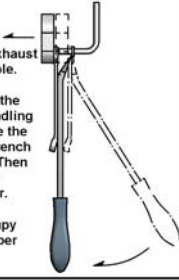
HAVING INSTALLATION QUESTIONS? CALL TECHNICAL SUPPORT AT 1-800-798-0813

### RUBBER ISOLATOR REMOVAL DIAGRAM

This technique can be used if and Exhaust Hanger Removal Pliers is not available.

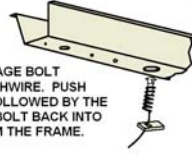
Using a 5/8" open end wrench, slide the wrench up to the rubber isolator, cradling the hanger rod as shown. Next place the flat edge of a pry bar between the wrench and the hanger stop or hanger rod. Then simply rotate the pry bar toward the wrench to remove the rubber isolator.

Note: Using a spray lubricant or soapy water on the hanger rod and the rubber isolator helps removal.



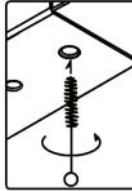
### REVERSE PULL FISHWIRE TECHNIQUE

ATTACH FISHWIRE TO CARRIAGE BOLT AND SLIDE SPACER ONTO FISHWIRE. PUSH THE BOLT THRU THE HOLE FOLLOWED BY THE SPACER (AS SHOWN). PULL BOLT BACK INTO POSITION, PROTRUDING FROM THE FRAME.



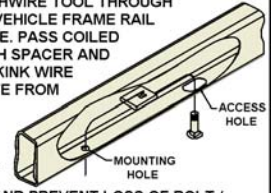
### WELDNUT CLEANING

To remove debris from weldnuts in frame, spray lubricant or compressed air into hole. For heavy debris, use a small wire brush. (Be careful not to damage threads).



### FISHWIRE TECHNIQUE

INSERT COILED END OF FISHWIRE TOOL THROUGH HITCH MOUNTING HOLE IN VEHICLE FRAME RAIL AND OUT THE ACCESS HOLE. PASS COILED END OF FISHWIRE THROUGH SPACER AND THREAD BOLT INTO COIL. KINK WIRE TO KEEP SPACER SEPARATE FROM BOLT AS SHOWN. PULL FISHWIRE, SPACER, AND BOLT THROUGH FRAME AND OUT MOUNTING HOLE. USE FISHWIRE TO GUIDE HITCH DURING MOUNTING AND PREVENT LOSS OF BOLT / SPACER INSIDE FRAME RAIL.



\*\*NOTE: SOME VEHICLES MAY FISHWIRE THROUGH END OF FRAME\*\*

## INSTALLATION STEPS

1. Lower the mufflers by removing (2) bolts in the exhaust hanger brackets. Remove upper exhaust hanger bracket from rubber isolator. Return the exhaust hanger brackets and bolts to vehicle owner. (See Rubber Isolator Removal Diagram.)
2. Support the exhaust to avoid damaging it. Remove the exhaust hangers near the exhaust split, forward of the mufflers, from the rubber isolators. (See Rubber Isolator Removal Diagram.)
3. Fishwire 1/2-13 X 1-1/2" carriage bolt and SP10 spacer through driver side access hole and out forward most hole in frame rail. (See Fishwire Technique.)
4. Reverse fishwire 1/2-13 X 1-1/2" carriage bolts and SP10 spacers into the access holes, both sides. (See Reverse Fishwire Technique.)
5. Raise the hitch into position and secure with flange nuts as shown.
6. Secure forward most hole on passenger side with M12-1.75 X 35mm hex bolt and 1/2" conical toothed washer as shown.
7. Torque all 1/2" hardware to 75 ft-lbs. Torque all M12 hardware to 60 ft-lbs.
8. Raise the exhaust into place and secure it to the hitch by attaching the rubber isolators to the hanger tab in the hitch sideplates. (Spray lubricant or soapy water will ease the installation of the isolator onto the mount tab.)

PERIODICALLY CHECK THIS RECEIVER HITCH TO ENSURE THAT ALL FASTENERS ARE TIGHT AND THAT ALL STRUCTURAL COMPONENTS ARE SOUND.