

55316

FORD F-SERIES

WIRING LOCATION GUIDE GUÍA DE UBICACIÓN DEL CABLEADO IDE D'EMPLACEMENT DES FILS



MUST READ FIRST!

All steps must be followed to ensure correct function of the T-Connector. To verify proper installation once installed, test by connecting a test light or properly wired trailer.

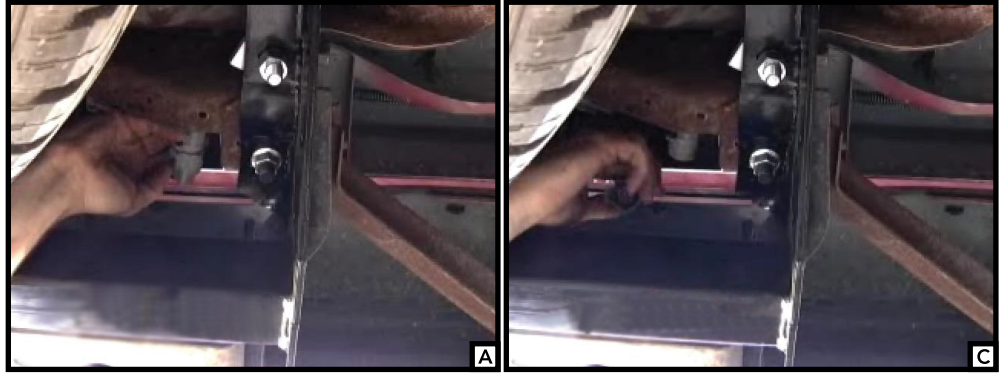
¡DEBE LEERSE PRIMERO!

Debe seguirse todos los pasos para asegurar el correcto funcionamiento del Conector-T. Para verificar la correcta instalación, pruebe conectando una luz de prueba o un remolque debidamente cableado.

À LIRE D'ABORD!

Pour assurer le bon fonctionnement du T-Connector, il faut suivre toutes les étapes. Pour vérifier que l'installation a été bien effectuée, branchez un feu de test ou une remorque correctement filée.

1/19/08

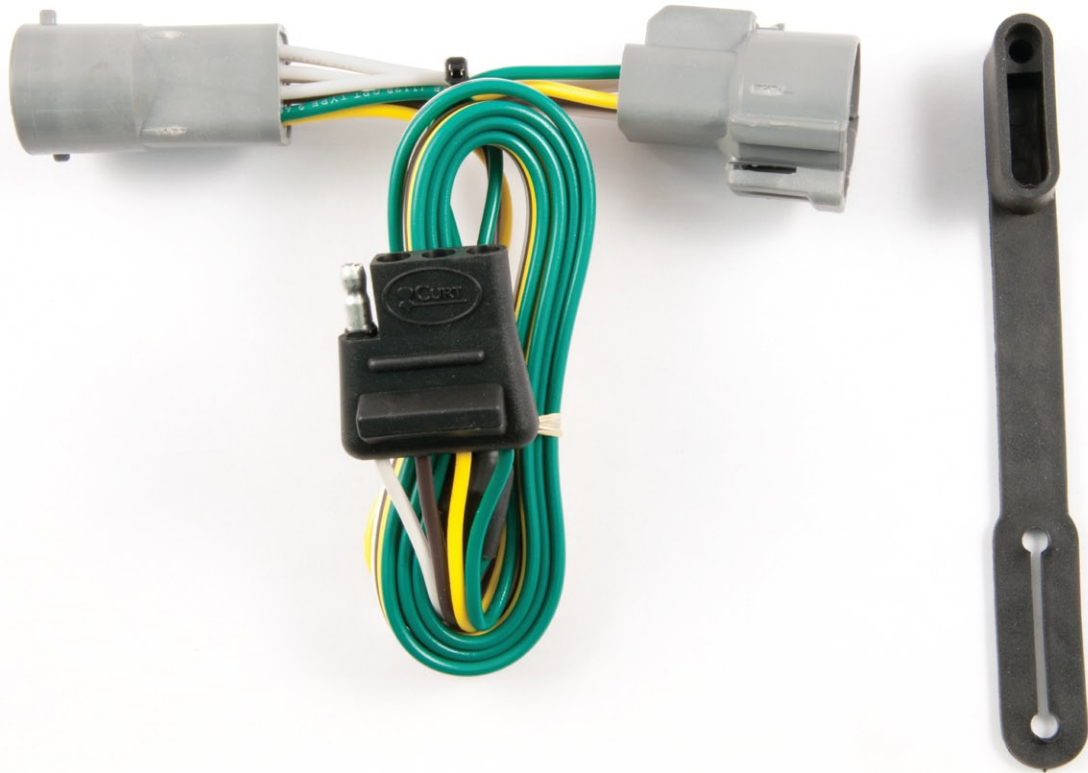


English

1. Locate the vehicle's taillight wiring harness along the inside of the left rear frame rail. This harness will have a connection point with connectors matching the ends of the T-connector adapter. **A**
2. Lowering of the vehicle's spare tire may ease the installation. **B** Separate the harness connectors, being careful not to break the locking tabs. Check to see that the mating surfaces of the connectors are free of dirt and clean if necessary. **C**
3. Insert the T-connector adapter between the harness connectors and lock into place. Be sure that the connectors are fully inserted with locking tabs in place. **D**
4. Route the T-connector harness to the center of the vehicle and secure wire to vehicle cross member or other mounting points using the cable ties provided.
5. Test the installation with a test light or trailer.

WARNING!

Verify miscellaneous items that may be hidden behind or under any surface before drilling to avoid damage to vehicle and/or personal injury.



55316