

55585

HONDA RIDGELINE

WIRING LOCATION GUIDE GUÍA DE UBICACIÓN DEL CABLEADO IDE D'EMPLACEMENT DES FILS



MUST READ FIRST!

All steps must be followed to ensure correct function of the T-Connector. To verify proper installation once installed, test by connecting a test light or properly wired trailer.

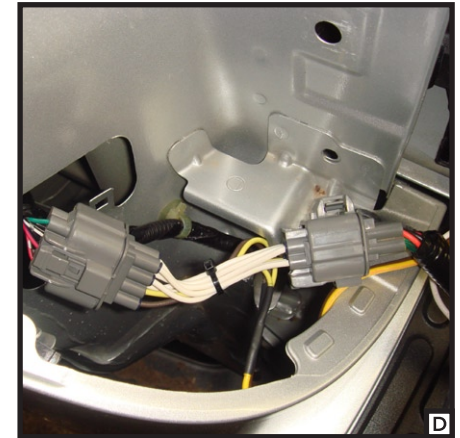
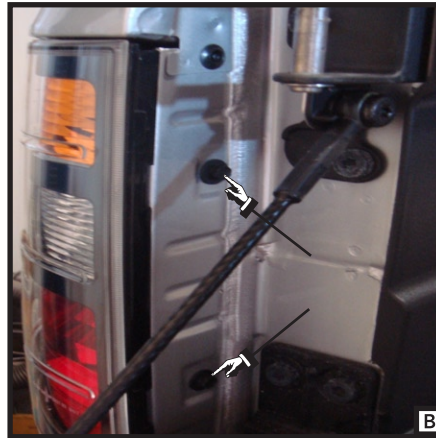
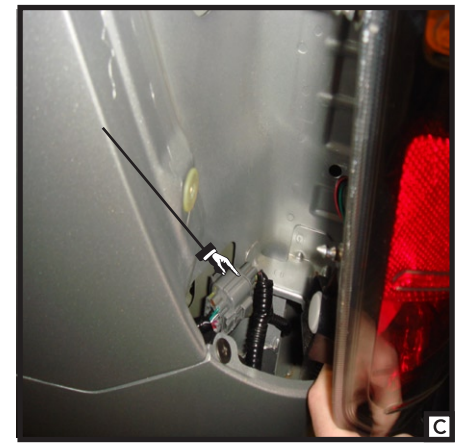
¡DEBE LEERSE PRIMERO!

Debe seguirse todos los pasos para asegurar el correcto funcionamiento del Conector-T. Para verificar la correcta instalación, pruebe conectando una luz de prueba o un remolque debidamente cableado.

À LIRE D'ABORD!

Pour assurer le bon fonctionnement du T-Connector, il faut suivre toutes les étapes. Pour vérifier que l'installation a été bien effectuée, branchez un feu de test ou une remorque correctement filée.

03/31/08



English

1. Open the tailgate and remove the vehicle's taillights. [A] Remove the 10 mm bolts and carefully pry the housing away from the vehicle, being careful not to break the alignment tabs. [B]
2. On the driver and passenger sides of the vehicle, locate the vehicle's taillight wiring harness. [C] The taillight wiring harness will have a connection point, near each taillight housing, matching the ends of the T-connector. Separate this connector being careful not to break the locking tabs. All connector surfaces should be clean and free of dirt.
3. Beginning on the drivers side, plug the T-connector harness containing the yellow wire in between the vehicle's mating connectors. Be sure that the T-connector is fully inserted with the locking tabs in place. [D]
4. Beginning at the Driver's side taillight pocket, route the harness containing the green wire and the 4-flat down the opening between the vehicle bumper and the body. Route the 4-flat harness to the center of the vehicle. Route harness containing the green wire underneath the vehicle up through the opening between the vehicle bumper and the body to the passenger's side taillight pocket.
5. Repeat step 3 for the passenger's side using the T-connector harness end with the green wire.
6. Locate a suitable grounding point near the connector such as the vehicle's frame or cross member. (Do not drill into the vehicle floor or bed). Clean dirt and rustproofing away from the area. Drill a 3/32" hole and secure white wire using eyelet and screw provided.
7. On the drivers side, mount the T-connector black box using the double-sided tape provided. Secure the remainder of the T-connector harness.
8. Reinstall the taillight housing assemblies, positioning the vehicle wiring harness between the housing and the vehicle body.

WARNING!

Verify miscellaneous items that may be hidden behind or under any surface before drilling to avoid damage to vehicle and/or personal injury.

Español

Français



55585