

# RV TOW Harness Wiring Kit

## INSTALLATION INSTRUCTIONS

Fits: Chevrolet Equinox

GMC Terrain

### Kit Includes:

- (1) Wiring Harness with 4-Flat Connector
- (1) 48" 4-Flat Extension
- (20) 15" Cable Tie
- (1) 4-Flat Bracket
- (1) Adhesive Cable Tie Pad
- (3) #8 Self-Tapping Ground Screw

## RV TOW HARNESS INSTALLATION INSTRUCTIONS

### 1. Read instructions thoroughly before beginning.

2. Open the rear tailgate. Using a flat screwdriver remove the plastic caps that cover the screws that hold both taillight assemblies to vehicle. Using a 10mm socket or phillips screw driver remove the two screws that hold the taillights to the vehicle. Gently pull taillight away from the vehicle and locate vehicle's factory wiring harness connectors. Separate connectors from both sides and set aside shown in **Figure 1**. Inspect connectors for dirt & debris and clean if necessary.



Figure 1

3. Starting on driver's side position the RV harness with connectors containing Yellow wires between separated vehicle harness connectors. Press connectors firmly into the vehicle connectors until they lock into place. Pull on connectors to ensure the locks are engaged.

4. Locate a clean and accessible mounting location on the vehicle near the RV harness ends within reach of white wire and ring terminal. Remove any debris or undercoating to expose a clean metal surface and drill a 3/32" hole.

**\*Caution: Take care not to drill through the body or any exposed surface.\***

5. Attach ring terminal on the White wire using the ground screw provided.

6. Cut the cable ties on 4-Flat portion of harness. Route the remaining portion of the RV harness with connector ends containing the Green wire through the opening behind the taillight.

7. Route the portion of harness with the T-Connector ends containing Green wire to the Passenger side along the rear frame rail and secure the conduit to the frame rail using the cable ties provided. In the center of the frame rail

mount the cable tie pad and secure the conduit with a cable tie shown in **Figure 2**.

8. Using a fish tape or stiff wire route the portion of harness with the T-Connector ends containing Green wire up through the passenger side opening. Once T-Connector ends are routed into the taillight cavity repeat Step 3 for plugging

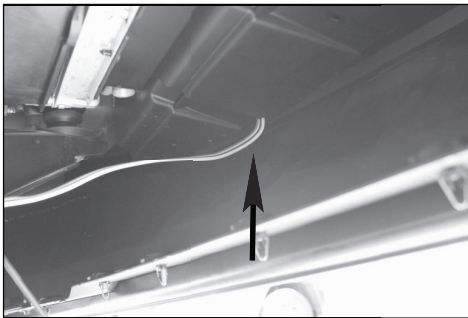


Figure 2

9. Route the 4-Flat portion of the RV harness down through the taillight opening. Route it along the existing factory wire harness above the wheel and suspension assembly securing with cable ties shown in **Figure 3**.



10. Continue routing 4-Flat along the brake lines to front support bar at front of vehicle using the cable tie securing it along the way. Route the 4-Flat along the frame to front of bumper into the bumper opening shown in **Figure 4**.



\*An alternate routing for the 4-flat connector to front of vehicle is to route along the outside of frame rail using cable ties to secure it and continue to Step 12.

**Caution: Make sure to avoid areas that contain moving parts or could cut, pinch or burn the wires when routing the 4-flat harness towards the front of the vehicle. Also avoid routing harness near the fuel lines as it may cause the fuel to ignite.**

**Failure to follow these warnings may cause property damage, personal injury or loss of life.**

11. Locate the front frame rail that goes across the front of the vehicle. Locate a suitable position to mount the 4-Flat bracket shown in **Figure 5**. Using the bracket as a template mark the two holes and drill two 3/32" holes and attach the bracket using the two remaining screws. **\*Caution: Take care not to drill through the body or any exposed surface.\***

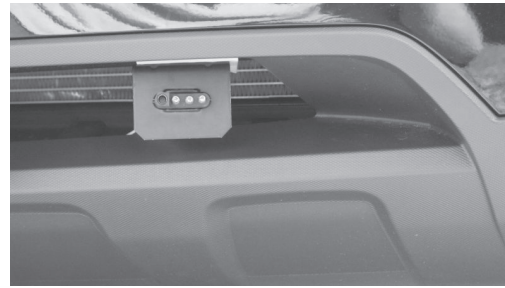


Figure 5

12. With the 4-flat extension plugged into the RV harness on one end and the motorhome on the other, test that the functions work on the Jeep Grand Cherokee. These functions will only work on the brake/tail combination lamp.

### 4-Flat Harness Color Code:

- White - Ground
- Brown - Tail Light
- Green - Right Turn and Brake Signal
- Yellow - Left Turn and Brake Signal

When not in use store the 4-flat extension in the vehicles glove box.

13. At the rear of the vehicle secure any loose wires to the vehicle's crossmember using cable ties provided. Re-install taillights to vehicle.

**NOTE: THIS RV HARNESS ALSO INCLUDES A CONNECTION POINT LABELED "FOR TRAILER TOW USE ONLY: 4-FLAT HARNESS REQUIRED." IF YOU DECIDE TO LEAVE YOUR RV HARNESS ON THE VEHICLE AT ALL TIMES AND WANT TO TOW A TRAILER SIMPLY PLUG IN 4-FLAT HARNESS.**