

INSTALLATION INSTRUCTIONS

4157

02-05 Ford Explorer 4DR

Parts List:**QTY**

- (1) Sidebar set (Left & Right)
- (3) Mounting brackets A
- (3) Mounting brackets B
- (2) Short tube spacer
- (4) Large tube spacer

(1) Hardware kit including:

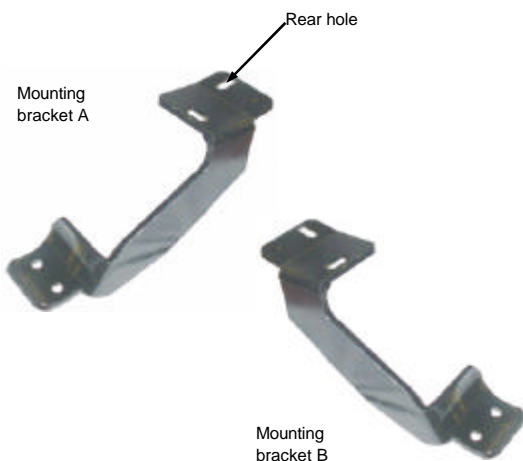
- (4) 3/8 x 4 1/2" Hex head bolt
- (2) 3/8 x 4" Hex head bolt
- (18) 3/8 x 1 1/4" Hex head bolt
- (24) 3/8" Flat washer
- (24) 3/8" Lock washer
- (12) 3/8" Clip nut

Tools required:

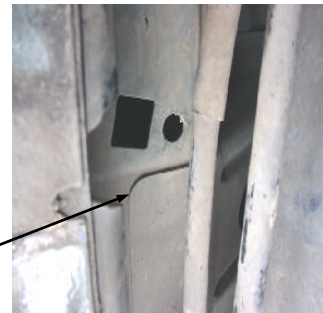
- 9/16" Socket Ratchet
- 9/16" Wrench

Instructions:**Aproximated installation time: 20 min.**

1. Read and understand instructions completely before beginning installation.
2. Sidebar set consist of a driver and passenger side. The rear step is the closest to the bend. Be sure to determinate the correct side before installation.
3. For the installation of the mounting brackets on the driver side, must use as front and central mounting brackets (2) mounting brackets A and (1) mounting bracket B as rear mounting bracket. Picture 4. For passenger side, must use as front and central mounting bracket (2) mounting brackets B and (1) mounting bracket A as rear mounting bracket.
4. Locate the existing holes beneath of vehicle. Then place 3/8" clip nut. Picture 1 & 2.
5. To install front and central mounting brackets, use a large tube spacer between the rear hole of the mounting bracket and vehicle, secure using 3/8 x 4 1/2" hex head bolt, flat and lock washers. Bolt the other mounting bracket hole to the vehicle using 3/8 x 1 1/4" hex head bolt, flat and lock washers. Note: At the front mounting bracket, place a short tube spacer between the mounting bracket and vehicle and use a 3/8 x 4" hex head bolt. Picture 3.
6. Place the sidebar up to the mounting brackets and bolt them together using 3/8 x 1 1/4" hex head bolts, flat and lock washers. Leave loose.
7. Make any final adjustments to the alignment of the sidebar and tighten all bolts. Repeat for the opposite side.
8. You may need periodically to re-tighten the bolts.

Assembly Diagram:**Picture 1**

Place 3/8" clip nut



3/8" clip nut installed

**Cleaning and care instructions:**

Diseño:

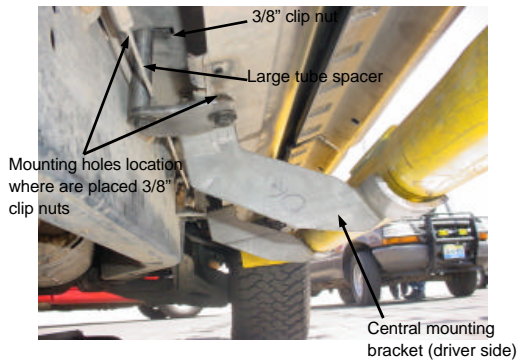
Calidad:

Protect the finish with a non-abrasive automotive wax, (e.g. Pure Carnauba) on a regular basis. The use of any soap, polish, or wax that contains an abrasive is detrimental to the finish, as the compounds scratch the finish and cause corrosion.

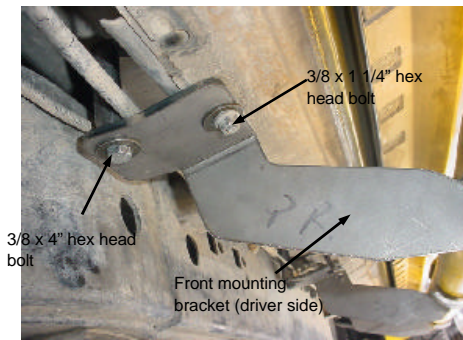
Revised 30/Mar/2004

INSTALLATION INSTRUCTIONS
4157

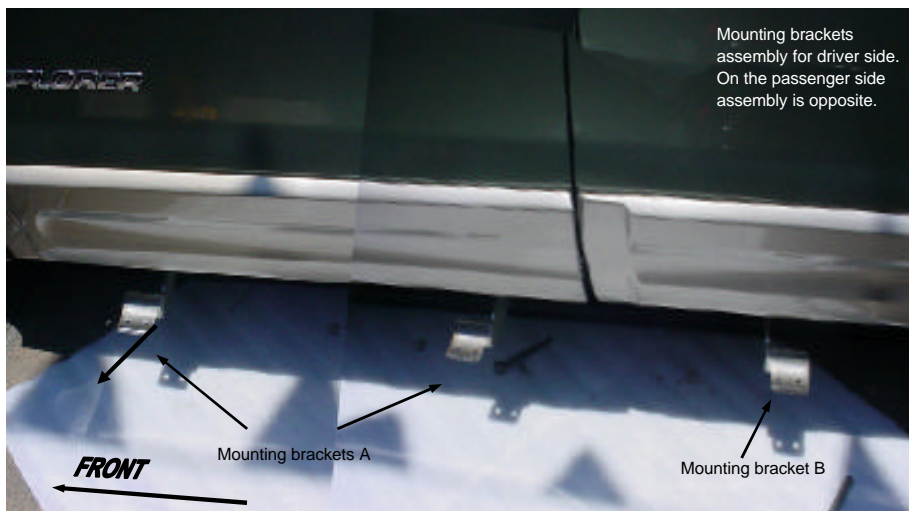
Picture 2



Picture 3



Picture 4



Cleaning and care instructions:

Diseño:

Calidad:

Protect the finish with a non-abrasive automotive wax, (e.g. Pure Carnauba) on a regular basis. The use of any soap, polish, or wax that contains an abrasive is detrimental to the finish, as the compounds scratch the finish and cause corrosion.

Revised 30/Mar/2004