

2021+ FORD  
F-150 5.0L

**CORSA**  
PERFORMANCE



## IMPORTANT! WARRANTY AND INSTALLATION INSTRUCTIONS

*Please Forward All Information to Consumer*

Be sure to review the enclosed instructions prior to beginning the installation process. If you have any questions about the enclosed parts or instructions, or if you encounter a problem during installation:

**CALL TECHNICAL SUPPORT:** 440.891.0999 or 800.486.0999

**TO ACTIVATE YOUR WARRANTY GO TO:  
[CORSAPERFORMANCE.COM/WARRANTY](https://corsaperformance.com/warranty)**

COLOR INSTRUCTIONS ARE AVAILABLE BY PART NUMBER ON: [CORSAPERFORMANCE.COM](https://corsaperformance.com)



**NEVER** work on a hot engine bay.  
Allow time for the vehicle to cool.

**INSTALL DIFFICULTY**



### RECOMMENDED TOOLS & SUPPLIES

- Flathead Screwdriver
- Ratchet
- 7,8,10,13 mm Sockets
- Trim Removal Tools
- Philips Screwdriver
- Ratchet Extension
- 10mm Wrench
- 13/16" Wrench

**Please take time to read and understand these installation instructions.**

CORSA recommends that the installation of this system be performed by a qualified service center or professional installer who has the necessary equipment, tools, and experienced personnel. However, if you decide to perform this installation yourself, the use of an additional person may be required.

**WARNING:** Never work on a hot engine bay. Allow time for the vehicle to cool.

Check that this air intake complies with your Federal, State, and Local laws. We recommend saving your stock system.

This warranty does not extend to damaged or defect in the finish of a product or to any product, that in the opinion of CORSA Performance, has been misused, damaged by accident or negligence, altered or modified in any way, faulty installation or installed contrary to CORSA installation instructions, or repaired by an unauthorized service facility.

Full warranty available on [www.corsaperformance.com](http://www.corsaperformance.com)

**Please confirm that all parts are present according to the bill of materials before beginning the installation.**

If something is missing call Tech Support at 440.891.099 or Toll Free: 1.800.486.0999

# 2021+ FORD F-150 5.0L

Closed Box Air Intake  
Part #: 49150, 499106, 49150D



## PREASSEMBLED MATERIALS

<b>1. CORSA Air Box (412217)</b>	<b>2. CORSA Air Duct (441303)</b>	<b>3. CORSA Lid Assembly (652091)</b>	
<b>4. Filter Adapter (460641)</b>		Lid Screw (5900)	4
		Rubber Washer (59025122)	4

## FILTER OPTIONS

<b>5. MaxFlow 5 Oiled Filter (5119)</b>	<b>6. DryTech Filter (5119D)</b>	<b>7. PowerCore Filter (61513)</b>
---	----------------------------------	------------------------------------

## HARDWARE KIT

#56 Clamp (52056)	3	#64 Clamp (52064)	1	Ø3.5" Silicone Straight Sleeve (53107)	2.5 in
Ø4.0" x Ø3.5" Silicone Reducer (53310)	1	6mm x 16mm Bolt (59012210)	3	6mm x 25mm Bolt (59012212)	1
.25" x .75" Flat Washer (59020101)	1	.25" x .63" Flat Washer (59020101)	4	.25" Lock Washer (59020114)	4
6mm Nut (59061210)	1	.25" Spacer (652007)	1	Bracket (652178-240)	1
Large Fitting (59034138)	1				

*Locate the vehicle's battery and disconnect the negative battery cable.  
This may reset the computer and clear old air flow data to help prevent CEL errors.*

## REMOVAL INSTRUCTIONS

## FACTORY INTAKE



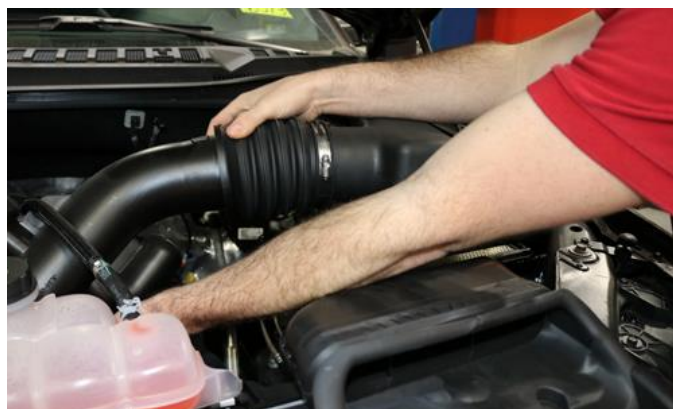
1. Loosen the clamp securing the factory air duct to the throttle body using a flathead screwdriver or ratchet and 7mm socket.



2. Pull the coolant hose from retaining feature on factory air duct.



3. Disconnect vent connection from rear of factory air duct.  
**NOTE:** Pushing the fittings further onto the duct before squeezing the tabs to ease the release of the fittings.



4. Release the clips securing the top half of the factory air box to the lower half and remove the duct and top half from vehicle.

Continued on Next Page . . .

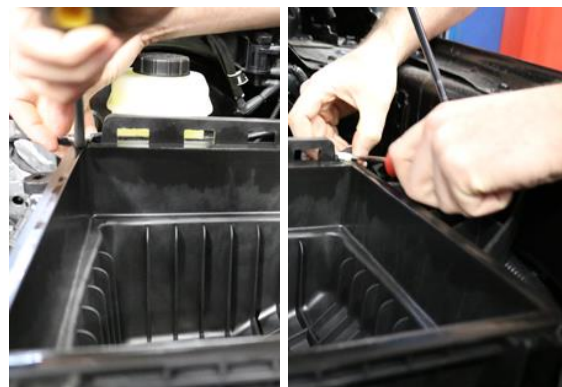


**REMOVAL INSTRUCTIONS**

**FACTORY INTAKE**



- 5.** Remove the air filter.



- 6.** Disconnect wiring harness from lower half of factory air box by using a trim removal tool on the wire clips.



- 7.** Remove the bolt securing the factory air box to the inner fender using a ratchet and 13mm socket.

**NOTE:** Save this bolt for installation.



- 8.** Remove the two factory scoop retaining clips using a trim removal tool. Remove air box and scoop from vehicle.

**NOTE:** Save clips for installation.



- 9.** Locate the metal bushing and rubber grommet on side of factory air box and remove both.

**NOTE:** Save for installation.



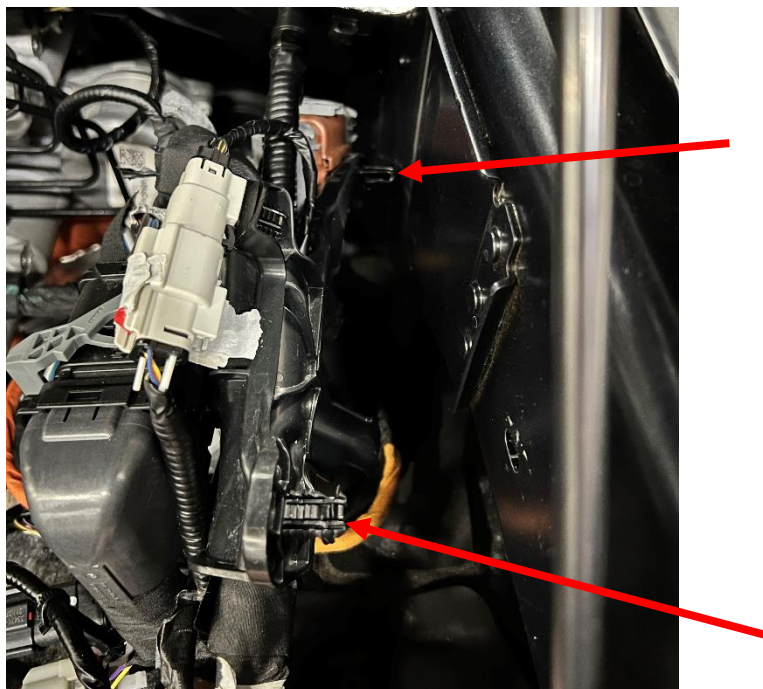
- 10.** Remove bolt securing scoop to air box using a ratchet and 8mm socket. Separate scoop from air box.

**NOTE:** Save scoop for installation.

Continued on Next Page...

**REMOVAL INSTRUCTIONS**

**FACTORY INTAKE**



- 11.** Using a trim removal tool, carefully pull the plastic wiring harness mount from the inner fender.

This concludes the removal of the factory intake.

### INSTALLATION INSTRUCTIONS

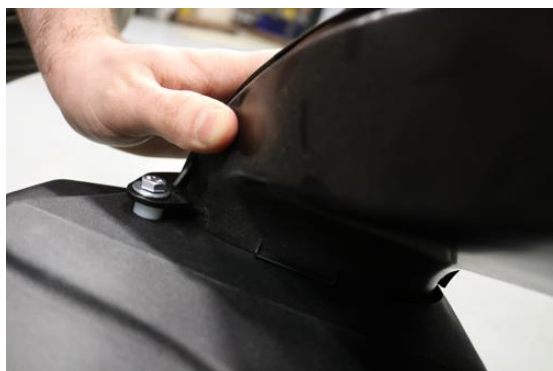
### CORSA INTAKE



- 1.** Install wiring harness bracket to Volant air box using two 6mm x 16 bolts, two .25" x .63" flat washers, two .25" lock washers and two 6mm nuts.



- 2.** Locate CORSAs air box and rubber grommet and metal bushing from removal step 9. Install grommet into air box the bushing into grommet from inside box.



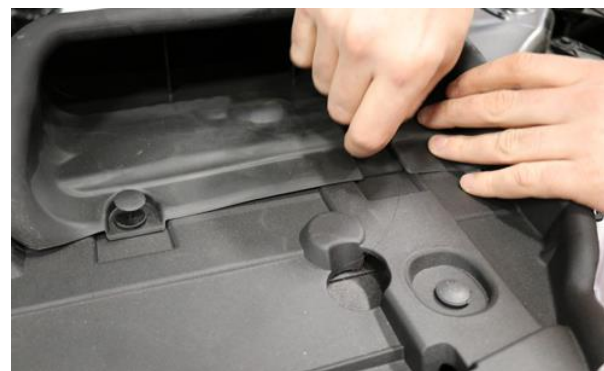
- 3.** Locate the factory scoop, the 6mm x 25mm bolt, one .25" x .63" flat washer, the .25" x .75" flat washer, one .25" lock washer, the .25" spacer, and the 6mm nut. Attach air scoop to air box placing the spacer between the scoop tab and air box. Tighten hardware with 10mm wrenches.



- 4.** Install CORSAs air box with scoop into the vehicle by inserting posts on bottom of CORSAs air box into factory grommets.



- 5.** Locate the bolt from removal step 7 and attach the CORSAs air box to the inner fender using a ratchet and 13mm socket.



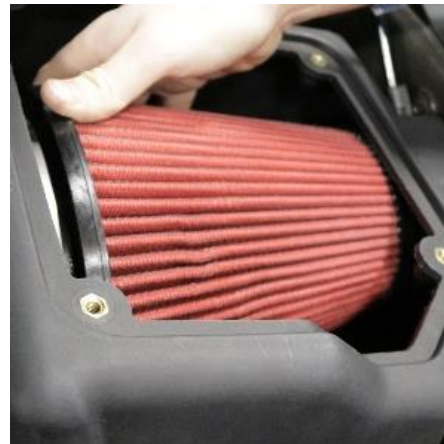
- 6.** Locate the air scoop retaining clips from removal step 8 and attach factory scoop.

Continued on Next Page ...



**INSTALLATION INSTRUCTIONS**

**CORSA INTAKE**



- 7.** Locate filter and filter adapter and insert the filter adapter into filter. Tighten clamp enough that it won't fall off filter but leave loose enough to rotate. Insert the filter into the air box with the adapter side down. Rotate the top of the filter down into the air box and rotate the filter around and push the adapter through air box.



- 8.** Locate three 6mm x 16mm bolts, three remaining .25" x .63" flat washers, and three remaining .25" lock washers. Attach filter adapter to air box and tighten using a ratchet and 10mm socket.



- 9.** Locate the Ø3.5" straight sleeve and two #56 clamps. Install straight sleeve with one clamp onto throttle body and tighten clamp with flathead screwdriver or ratchet and 8mm socket. Loosely place the other clamp onto straight sleeve.

Continued on Next Page ...



**INSTALLATION INSTRUCTIONS**

**CORSA INTAKE**



**10.** Locate CORSA air duct, threaded fitting, silicone reducer, remaining #56 clamp, and #64 clamp. Install fitting into threaded hole in duct, tighten with 13/16" wrench. Place smaller end of reducer approximately one inch onto air duct along with the # 56 clamp. Loosely place #64 onto larger end of reducer.



**11.** Install air duct into vehicle by placing the reducer onto the filter adapter and the opposite end into the straight sleeve clamped to the throttle body. Adjust duct as necessary and tighten all clamps using a flathead screwdriver or ratchet and 8mm socket.



**12.** Connect vent line to fitting in air duct.



**13.** Locate the CORSA lid assembly, lid screws, and rubber washers. Install lid assembly onto air box using a Philips head screwdriver.

**14.** Check all hose connections and re-connect negative battery cable.

This concludes the installation of your CORSA air intake system.

*Check that this air intake complies with your Federal, State and Local laws.  
We recommend saving your stock system.*

---

### **BEFORE ROAD TESTING**

- 1.** Start engine, leaving the transmission in park and securing the parking brake.
  - 2.** Make sure to look and listen for any unusual noises or air leaks. Repair problems if needed.
  - 3.** Once completed it will be necessary to check periodically, after a few heat cycles, for realignment and tightening of all connections.
- 

### **Max Flow 5 CARE AND CLEANING**

Check the Max Flow 5 cotton reusable filter periodically and remove any excessive dirt build-up by tapping the filter on the ground and brushing off the loosened dirt. Clean the filter by using a two stage cleaning kit to thoroughly clean and re-oil the filter. Re-oil every 10,000 miles without cleaning to improve filtering in sand and dirt. Clean only when dirt is very excessive or 50,000 miles.

---

**Reference for Replacement Filters:** Max Flow 5 Filter Part # 5119, DryTech 3D Filter Part # 5119D or PowerCore<sup>®</sup> Filter Part # 61513