



# PRO SERIES® PARTS



COLOR INSTRUCTIONS ARE AVAILABLE BY PART NUMBER ON: [CORSAPERFORMANCE.COM](http://CORSAPERFORMANCE.COM)

## INSTALL DIFFICULTY

CORSA recommends that the installation of this system be performed by a qualified service center or professional installer who has the necessary equipment, tools, and experienced personnel. A second person may be needed for certain installations.

### PRO TIP

**Never Work on a Hot Exhaust System. Always wear eye protection when working under a vehicle**

CORSA Performance makes no representation or warranty, expressed or implied that its **PRO SERIES** products and or components there-in comply with federal, state, or local emission levels, noise levels, or safety standards or that any of their parts conform with the racing vehicles exemption, unless otherwise noted. The purchaser assumes all responsibility for such use and compliance.

This warranty does not extend to damaged or defect in the finish of a product or to any product, that in the opinion of CORSA Performance, has been misused, damaged by accident or negligence, altered or modified in any way inconsistent with its intended use.

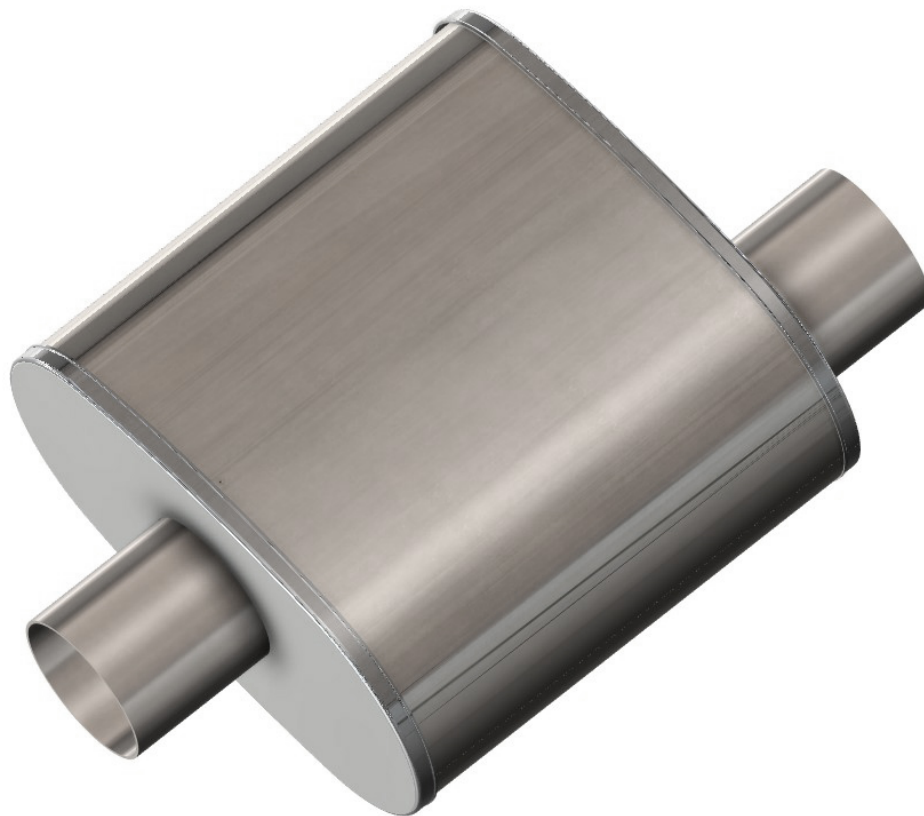
Full warranty available on [www.corsaperformance.com](http://www.corsaperformance.com)

- If you have any questions about the enclosed parts **CALL TECHNICAL SUPPORT: 800.486.0999**

For over 25 years CORSA Performance<sup>®</sup> has been “Perfecting the Science of Sound”<sup>™</sup> pioneering acoustic technologies and solutions to radically improve the aftermarket exhaust experience. Utilizing market-leading, patented, No Drone RSC<sup>®</sup> (Reflective Sound Cancellation) Technologies, CORSA Performance<sup>®</sup> has staked claim as the choice for enthusiasts seeking the best in exhaust sound, quality, and performance.

CORSA Performance PRO SERIES Tuned Mufflers are the result of an intimate understanding of resonant frequencies acquired through 25 years of acoustic development. Engineered utilizing patent pending RSC<sup>®</sup> Technology, PRO SERIES Tuned Mufflers target and eliminate the most common drone inducing frequencies present on V8 engines\* providing the best in-cabin driving experience on the road.

CORSA PRO SERIES Tuned Mufflers are the ideal premium solution for builders and enthusiasts looking to reduce drone on custom builds and resto-mods. Made from 304 grade stainless steel, featuring a brushed finish, and backed by a Limited Lifetime Warranty, Nothing Compares to CORSA Performance PRO SERIES Tuned Mufflers.

**PRO TIP**

- **Measuring:** Always double check your measurements prior to cutting exhaust piping. Ensure adequate tubing is left for a welded or clamp-in installation.
- **Directionality:** PRO SERIES Tuned Mufflers are bi-directional and will work regardless of orientation.
- **Positioning:** While all applications vary greatly, positioning your Tuned Muffler in the front half of the vehicle will on average optimize the acoustic performance of the Tuned Mufflers.
- **Drain Holes:** All CORSA Performance PRO SERIES Tuned Mufflers feature drain holes. Position the drain hole down to ensure condensation drains from the muffler canister. If positioning muffler in an upright orientation add a drain hole to muffler using a #2 center drill or 1/8" drill bit. *Failure to add drain hole may result in muffler filling with condensation reducing muffler effectivity.*
- **Spacing:** PRO SERIES Tuned Mufflers should be spaced a minimum of a 1/2" from frame, body, or other mechanical components to eliminate potential contact or resonance. More space is preferable.

CORSA Performance PRO SERIES Packed Resonators offer a premium acoustic solution to the custom builder looking to control volume, reduce rasp or tailor the exhaust note of their vehicle. Made from brushed 304 stainless steel construction and utilizing CORSA Spec high-temp, synthetic fibers to control volume PRO SERIES Packed Resonators are designed to outperform and outlast the competition. Featuring a non-chambered, non-baffled design with perforated core construction, PRO SERIES Packed Resonators maximize airflow and performance.

PRO SERIES Packed Resonators come in a variety of sizes and configurations allowing the builder to customize the acoustic solution to their needs. As a stand-alone acoustic solution PRO SERIES Packed Resonators deliver a “classic” deep exhaust note. When paired as a system with CORSA Performance PRO SERIES Tuned Mufflers, PRO SERIES Packed Resonators reduce volume, control rasp, and deepen the exhaust note while the PRO SERIES Tuned Mufflers target and reduce drone causing frequencies.

Depending on resonator configuration chosen, PRO SERIES Packed Resonators have been tested to reduce volume by 2-8 decibels.

**PRO TIP**

- **Measuring:** Always double check your measurements prior to cutting exhaust piping. Ensure adequate tubing is left for a welded joint or clamp-in installation.
- **Volume Control:** The # of resonators used, and size of the resonator will impact the overall volume and tone of the exhaust note.
- **Directionality:** PRO SERIES Packed Resonators are non-directional and work regardless of orientation.
- **Installation:** PRO SERIES Packed Resonators come in multiple configurations allowing for a welded or clamp-in installation.
- **Drain Holes:** Resonators do not require drain holes for effectiveness.
- **Positioning:** PRO SERIES Packed Resonators are designed to be effective regardless of mounting position. PRO SERIES Packed Resonators can be placed anywhere space allows to reduce volume or adjust tone.
- **Spacing:** Resonators should be spaced a minimum of a ½” from frame, body, or other mechanical components to eliminate potential contact or resonance. More space is preferable.

CORSA Performance PRO SERIES Tuned Mufflers, Packed Resonators, Tip Kits and Hard Parts offer premium exhaust solutions that can be used separately or together to fabricate a custom exhaust system. When used together as a system, CORSA's PRO SERIES parts can be used to tailor the design, function, routing, and the exhaust note of the vehicle from ultra-aggressive to classic or a modern touring sound profile. Complete the custom exhaust system by selecting from our growing list of parts designed to allow the custom builder to fabricate a complete exhaust system from CORSA Performance components.

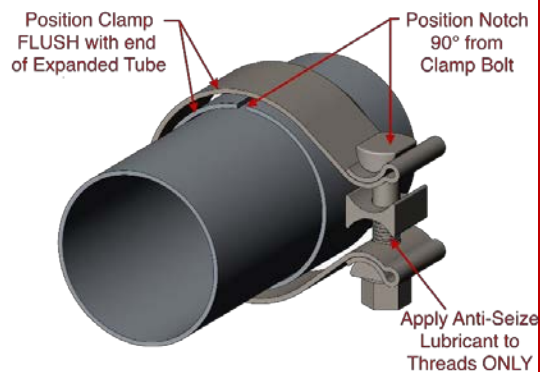
**WARNING!!****DO NOT SKIP THIS STEP****WARNING!!**

It is recommended to apply Anti-Seize Lubricant to the threads of the clamps and flange bolts. Failure to follow this procedure can cause nuts to seize on clamps and potentially destroy the threads.

After applying anti-seize lubricant, be sure to thoroughly clean your hands. The anti-seize lubricant will tarnish stainless steel.

All clamps should be tightened using a properly calibrated Torque Wrench. Using an impact gun will damage the clamp and reduce its ability to effectively seal the joint. It may also cause the joint to separate, thereby causing damage to your exhaust system and to your vehicle.

**TIGHTEN ALL CLAMPS TO 45FT-LBS.**



**NOTE:** During cold weather start-ups, you may experience an exhaust sound that is deeper and louder in tone than usual. This is temporary and will diminish to normal levels once your engine has reached its normal operating temperature.

**NOTE:** Immediately following the installation of your exhaust system, you may experience a trace of smoke after initial start-up. DO NOT be alarmed. The smoke is caused by the burning of a small amount of forming oil residue used in the manufacturing process.

**NOTE:** It is strongly suggested that all clamps be checked and tightened after road testing the vehicle once the system has cooled.