



**Detroit Speed, Inc.**  
**Selecta-Speed Wiper Kit**  
**1963-67 Corvette**  
**P/N: 121620**

A downpour of rain will no longer hinder your ability to clearly see the road. The Detroit Speed Selecta-Speed Wiper Kit provides you with the performance and convenience of a late model wiper system in a package that easily and cleanly mounts in your 1963-1967 Corvette.



Item #	Description	Quantity
1	Wiper Motor Assembly w/ Adapter Plate	1
2	Wiper Control Module	1
3	Wiper Harness	1
4	Wiper Switch Assembly	1
5	Wiper Module Mounting Plate	1
6	1-1/4" Firewall Grommet	1
7	10-24 x 3/4" Button Head Socket Cap Screw	1
8	10-24 Nylock Flange Nuts	3
9	Pitman Arm E-Clip	1
10	Wiper Knob Compression Spring, 1963-64	1
11	Wiper Knob Switch Closeout, 1965-66	1
12	Wiper Switch Clocking Spacer	1
13	Wiper Switch Retaining Nut	1
14	5/16"-18 x 3/4"L Flange Cap Screw	2
15	Packard 56 Series Connector	1
16	Instructions	1

This kit features a seven speed wiper system with five delays, low speed, and high speed. A CNC aluminum adapter plate mounts the new wiper motor to the stock firewall bolt pattern. The new pitman arm, included in the kit, connects directly to your existing wiper linkage. A rotary switch is also included, along with a complete wiring harness.

This kit does feature a washer pump option as the wiper switch does have a push button function. The wiring harness/control module is equipped with a power and ground wire to install an inline electric washer pump. DSE does offer a washer pump kit available as part number 121102.

#### Installation Instructions:

1. Before beginning, please ensure that the parts included with your kit match the parts list above. Ensure that the factory wiper system is in its "Parked" position. Disconnect the battery power by removing the negative battery lead from the battery. Mark the position of the wiper arms by placing masking tape on the windshield.
2. Remove the air cleaner assembly and distributor cover/radio shielding. Remove the coil mounting bracket and coil as an assembly. Remove the cap from the distributor housing (leave the ignition wires connected to the cap) and position it out of the way (Figure 1).



Figure 1 - Remove Distributor Cap

3. Disconnect the original wiper motor wiring from the motor along with the windshield washer hoses.
4. Remove the glove box assembly by first removing the four mounting screws under the glove box door. Then remove the six screws around the perimeter of the glove box interior. Unplug the glove box light connector, and remove the glove box assembly (Figures 2, 3, & 4 on the next page).

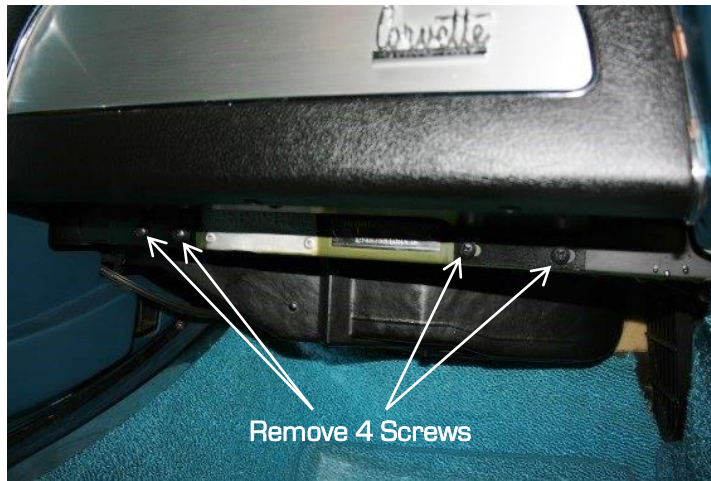


Figure 2 - Remove 4 Mounting Screws



Figure 3 - Remove 6 Mounting Screws



Figure 4 - Remove Glove Box

5. Remove the wiper linkage from the original motor pitman arm. Note the location and order of the linkage prior to removal. Remove the retaining clip, followed by the passenger's side linkage, then remove the rubber spacer washer, and finally remove the driver's side linkage (Figures 5 & 6 on the next page).



Figure 5 - Remove Retaining Clip



Figure 6 - Remove Wiper Linkage

6. Remove the four bolts that fasten the original motor to the firewall. The top bolt on the passenger's side will initially need to be loosened with an open end wrench due to the lack of clearance around the head of the bolt. Remove the original wiper motor from the vehicle (Figure 7).



Figure 7 - Remove Wiper Motor

7. Remove the factory grommet where the wiper motor wires run through the firewall (Figure 8). Re-route the original wiper motor connectors and wiring through the hole in the firewall and back into the interior of the vehicle. A small section of the original harness tape may need to be cut back in order to get the harness fully into the interior of the vehicle (Figure 9).



Figure 8 - Remove Firewall Grommet

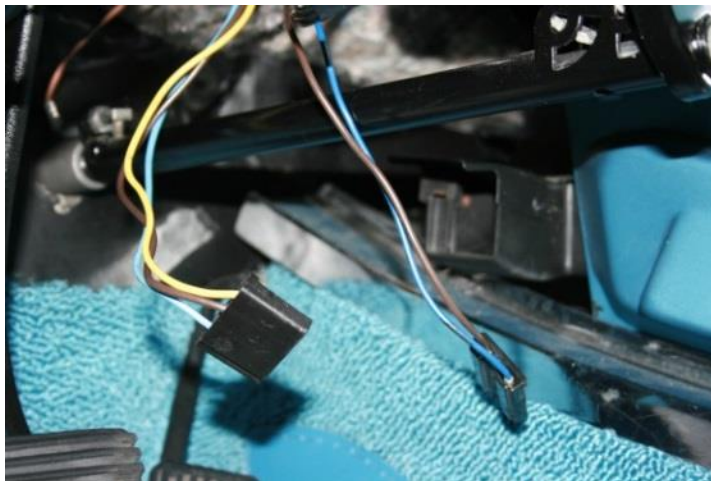


Figure 9 - Original Wiper Motor Connectors

**NOTE:** DSE recommends removing any A/C ducts from under the dash (If necessary) on the driver side as this will help with the install of the DSE wiper kit (Figure 10).

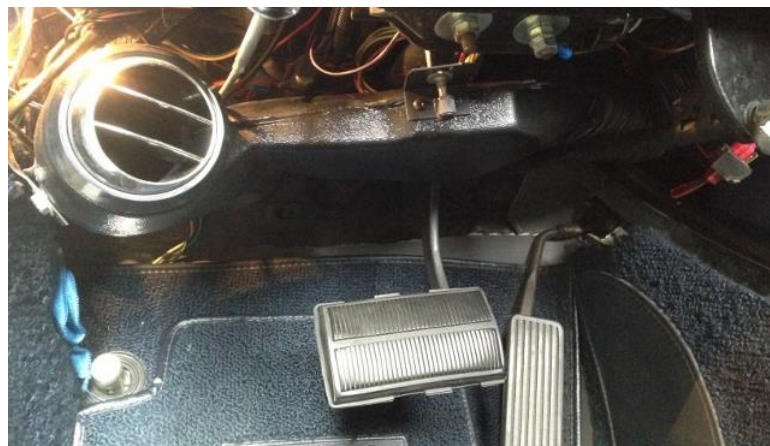


Figure 10 - Remove A/C Duct

8. Remove the terminal with the brown wire from the center position of the original wiper motor three terminal connector and install it into the supplied Packard connector. This wire will be connected to the new wiper harness later (Figure 11). The remainder of the original wiper motor harness can be shrink wrapped or taped up and then use tie straps to tie it up out of the way.

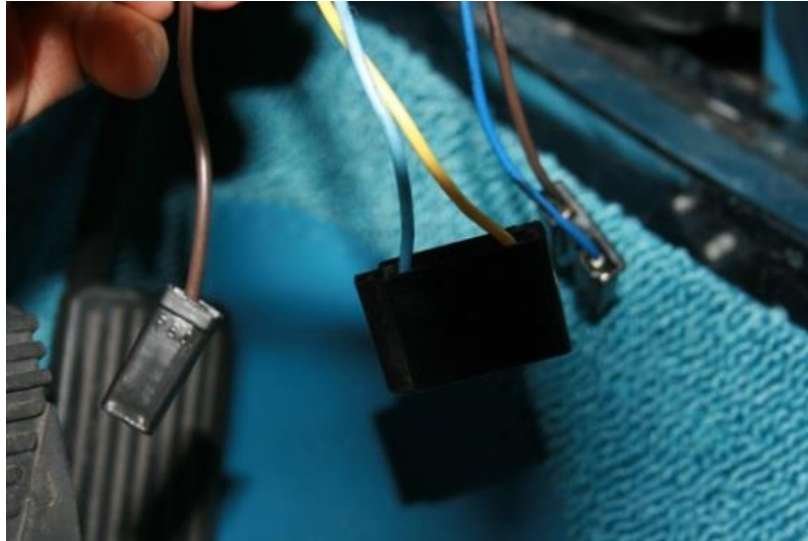


Figure 11 - Install Packard Connector

9. Clean the firewall in the area where the wiper motor mounts and then install the new wiper motor assembly. **NOTE: Do not remove the wiper motor pitman arm, the Selecta-Speed wiper kit is shipped with the pitman arm in the "parked" position.** Do not move the pitman arm by hand. If the pitman arm is moved from the original "parked" position from DSE, it may result in the wiper blades stopping in the wrong spot on the windshield.
10. Feed the pitman arm through the firewall and insert the two studs on the driver's side through the holes in the firewall. Once the motor is properly positioned against the firewall, tighten the socket button head screw that is partially installed on the lower passenger side of the adapter plate. Tighten the screw fully against the adapter plate while feeding it through the hole in the firewall (Figure 12).

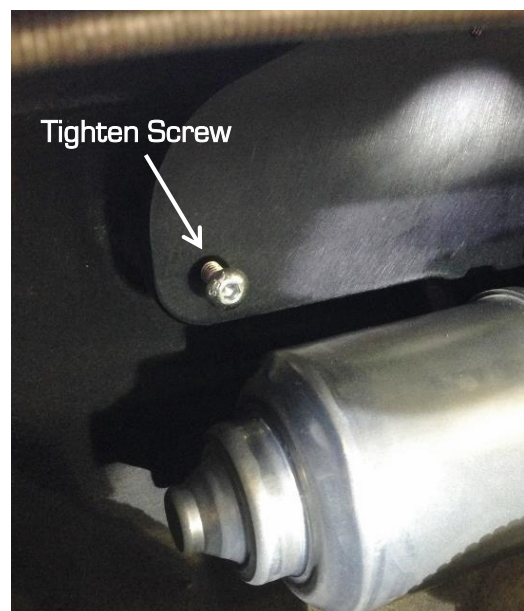


Figure 12 - Mount the Wiper Motor

11. From inside the vehicle, loosely install the three 10-24 flange nuts onto the wiper motor mounting studs. Also from the inside of the vehicle, install the 10-24 x 3/4" L socket button head screw in the top passenger's side mounting hole and thread it into the corresponding hole in the adapter plate. Tighten the four wiper motor assembly mounting fasteners to 20 in-lb (Figure 13).

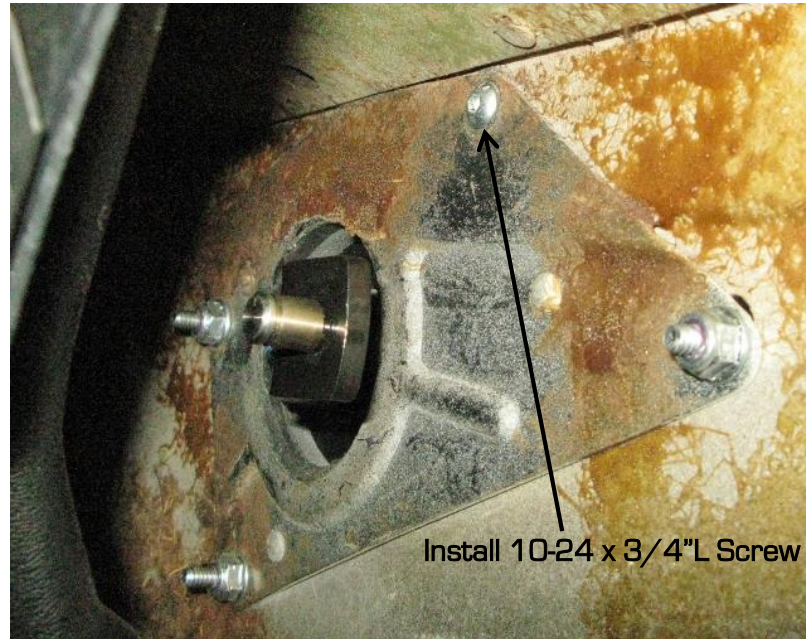


Figure 13 - Install Hardware

12. Mount the wiper linkage onto the new wiper motor pitman arm stud. Install the driver's side linkage first, then install the rubber spacer, followed by the passenger's side linkage, and then install the supplied E-clip (Figure 14).



Figure 14 - Install Wiper Linkage

13. Remove the original wiper switch knob by removing the set screw so the knob will pull off the switch; it will be reused on the new wiper switch. Remove the connectors on the back of the stock switch. Shrink wrap or tape off the original wiper switch connector and tie it up out of the way.

14. The Selecta-Speed switch will replace the stock switch. Remove the stock wiper switch from the dash by removing the switch nut using a suitable tool (Figure 15). MAC Tools has a wiper switch removal tool available as p/n: SC19 (Figure 16).



Figure 15 - Remove Switch Nut



Figure 16 - Wiper Switch Removal Tool

15. Place the wiper switch clocking spacer on the new wiper switch by lining up the anti-rotation tab on the switch with the slot on the clocking spacer (Figure 17). Install the switch into the dash by lining up the flat on the clocking spacer with the flat in the switch mounting hole (Figure 18).



Figure 17 - Wiper Switch Clocking Spacer



Figure 18 - Install Switch

16. Install the supplied switch retaining nut and tighten it with a suitable tool (Figure 19 on the next page). The switch wiring harness will fit tightly against the side of the steering column mounting bracket. The harness may need to be flexed slightly in order to get the switch lined up straight enough to install the retaining nut properly.





Figure 19 – Install Switch Nut

17. On 1963-64 models only (Figure 20), install the supplied compression spring inside the original wiper knob prior to installing it. Install the original wiper knob onto the new switch and tighten the set screw onto the flat on the switch shaft. On 1965-66 models only (Figure 21), insert the wiper switch knob closeout into the hole where the original washer button was located.



Figure 20 – 1963-64 Wiper Switch



Figure 21 – 1965-66 Wiper Knob

On the 1967 model, the factory wiper knob will need to be opened up to a 1/4" diameter (Figure 22). The original "D" shaped hole is not needed for the new wiper switch. Install the wiper knob onto the new wiper switch and tighten the set screw onto the flat on the switch shaft. **NOTE:** Make sure the set screw locks onto the flat on the switch shaft.



Figure 22 – 1967 Wiper Knob

18. Route the wiper motor connector side of the wiring harness through the same hole in the firewall as the original wiper harness. **NOTE: If you decide to cut the old wires please pay special attention to properly terminate the wire ends to avoid possible shortening.** Connect the wiper harness to the wiper motor and re-install the original grommet. (Figure 23).

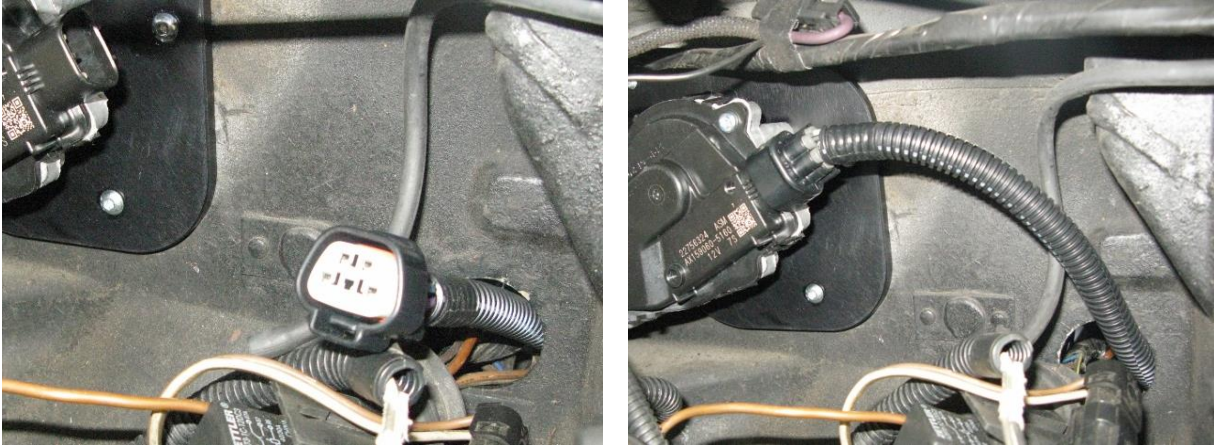


Figure 23 - Install Wiper Motor Connector

19. The DSE Selecta-Speed harness does include a weather pack connector to install an optional electric inline washer pump into your vehicle (Figure 24). DSE does offer a washer pump kit you can purchase separately as part number 121102.



Figure 24 - Washer Pump Connection

20. If you do not want to use the washer pump feature, you can tie wrap this connector/loom up under the dash. If you would like to use this option, use an existing hole or drill a new hole in your firewall to pass the connector through the firewall. You will need a 1-1/8" diameter hole in order to use the provided 1-1/4" rubber grommet. If you have purchased the DSE washer pump kit, use the instructions from that kit to complete the washer pump kit installation.
21. Install the wiper control module onto the module mounting plate using the provided 8-32 hardware if not already assembled from DSE (Figure 25 on the next page). **NOTE: If you also have the DSE Electric Headlight Kit installed, you can mount both control modules to the same mounting plate. Mount both modules back to back on the mounting plate using the provided 8-32 hardware (Figure 26 on the next page). Do not overtighten.**



Figure 25 - Wiper Control Module & Plate

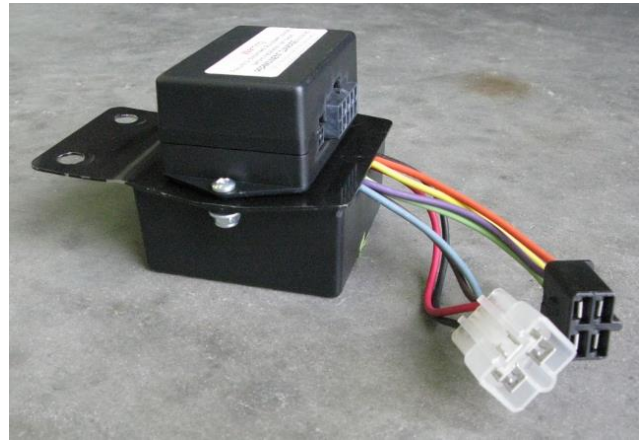


Figure 26 - Electric Headlight & Wiper Module

22. The wiper control module bracket is designed to be mounted to the two threaded holes on the far left side of the dash just above the driver's side kick panel (Figure 27). If the vehicle has the hood release cable bracket mounted in these holes, remove the two bolts that hold the hood release cable bracket. Install the control module mounting bracket under the hood release cable bracket and reinstall the bolts. If the hood release cable is not mounted through these holes, use the included 5/16"-18 x 3/4"L Flange Head Hex Cap Screws to mount the module in the position.

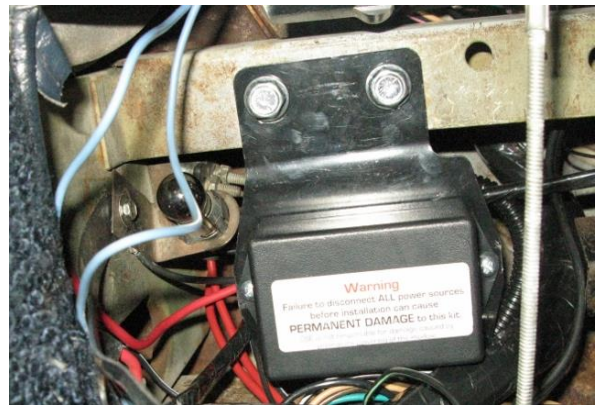
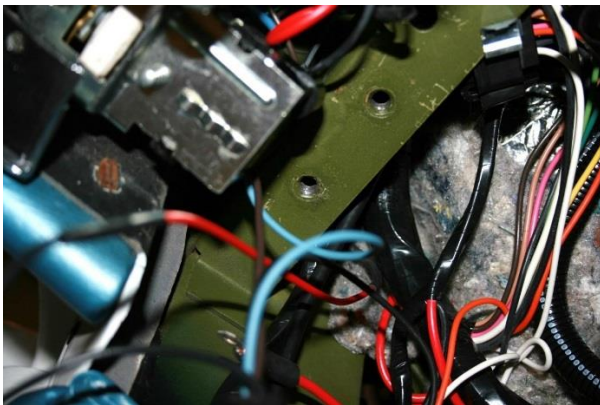


Figure 27 - Mount Control Module Bracket

23. With the wiper control module mounted in place, plug in the wiper switch and wiring harness connectors into the control module (Figure 28).

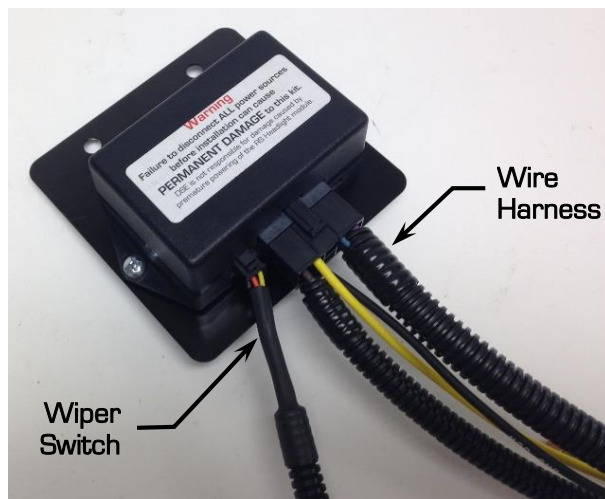


Figure 28 - Connect Wiper Switch & Harness to Module

24. Connect the male Packard connector that is on the yellow wire on the wiper switch wiring harness to the female Packard connector that was installed on the brown wire that was removed from the original wiper motor harness connector (Figure 29). This is the wiper motor power supply lead and is protected with an inline 30 amp ATO fuse.

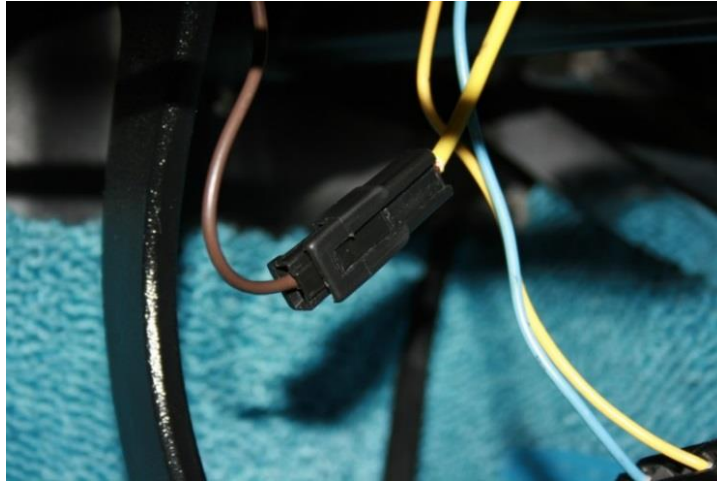


Figure 29 - Connect Power Wire

25. Connect the black wire with the ring terminal from the wiper switch harness to the existing factory ground connection that is located in the driver's side kick panel area. Make sure a proper ground is obtained by removing any rust or paint from the metal. Re-install any A/C ducts that you may have removed earlier from step 7.
26. Connect the negative battery lead and test the wiper system. The wiper arms may need to be adjusted to center the wiper sweep on the windshield. Original wiper arms can be adjusted using the adjusting screw on the arms. If equipped with aftermarket wiper arms, the arms may need to be removed and re-locked to properly align wipers. Once the system is operating correctly, reassemble the vehicle and enjoy the modern convenience of your new wiper system.

**NOTE:** In some cases high energy ignition systems have caused interference with the correct operation of the Selecta-Speed Wiper Kit due to spark plug wires routed closely to the wiper motor. If this occurs, re-routing your spark plug wires may be necessary.

If you have any questions before or during the installation of this product please contact Detroit Speed Inc. at [info@detroitsspeed.com](mailto:info@detroitsspeed.com) or 704.662.3272

**Legal Disclaimer:** *Detroit Speed, Inc. is not liable for personal, property, legal, or financial damages from the use or misuse of any product we sell. The purchaser is solely responsible for the safety and performance of these products. No warranty is expressed or implied.*