



DV8 JL Hard Top
INSTALL INSTRUCTIONS

421 Main St
Riverside, CA 92501
(951) 680 9595
DV8Offroad.com

Parts List:

- Hard Top Front "Targa" Section (1)
- Hardtop Rear Section (1)
- Rear and Side Windows (1 of each)
- Rear Window Hardware (1)
- Rear Section Upper Bolt (2)
- Flat Washer (6)
- Mounting Nut
- 5/16" x 1" Mounting Bolts (6)

READ INSTRUCTIONS ENTIRELY BEFORE INSTALLING PRODUCT

1. Remove the factory top. If the vehicle is equipped with a soft top remove the soft top, all hardware, and brackets. Check all seals to ensure that they are not cracked and do not contain signs of wear
2. Place the rear section of the hard top onto the Jeep and line it up with the holes in the tub for the factory hard top, loosely attach to the tub at the 6 mounting points using the 5/16" x 1" mounting bolts, flat washers, and the mounting nuts. You can also use the factory hardware if you prefer. **Do not tighten.**



Fig 1



Fig 2

3. Install the rear section upper bolt shown in Fig 3 and tighten. These two bolts are located where the Targa installs over the B pillar. (4 Door Only)

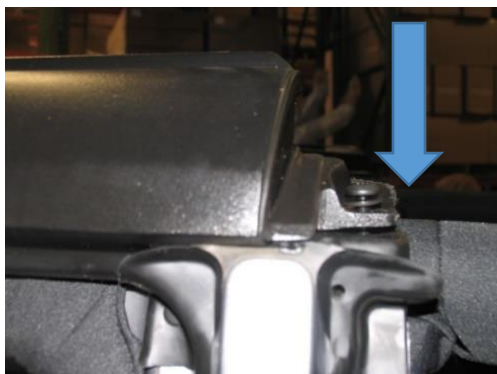


Fig 3

4. Make sure that the top is aligned evenly on the Jeep. Comparing the distances at the seal with back of the rear door jam shown in figure 4. Make sure that the seal lines up with the top. Tighten the 6 bolts on the tub in a star pattern (Fig 5) while an assistant ensures that the top remains in position, you may need to push on the top like in figure 4 to get it into position.



Fig 4

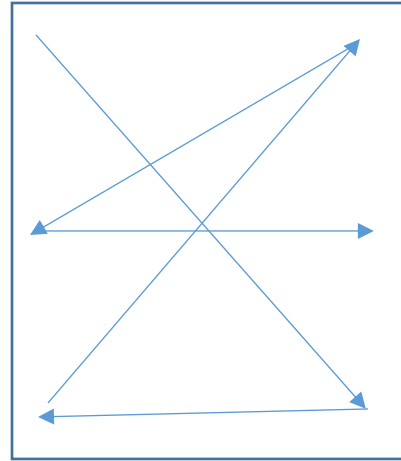


Fig 5

5. Place the front "Targa" portion of the top onto the Jeep and loosely in position making sure to untuck the rear seal into proper position on both sides. (Fig 8)



Fig 8

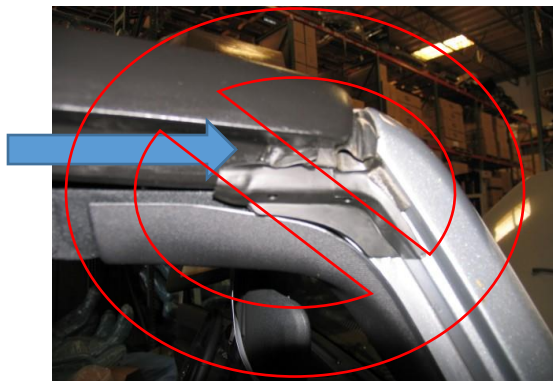


Fig 9



Fig 10

6. Be sure to push the front seals into position and make sure that they are not tucked under the top. (Fig 9 & 10) (Fig 9 Incorrect Fig 10 correct)

7. Pull down on the Targa as you slide the L shaped targa retainer pieces into position. Latch the front OEM style latches down onto the windshield channel the same as an OEM hard top.

Note: If the L shaped targa retainer pieces are not spaced properly you can add or removed spacers by loosening the bolt holding the retainer piece in place. After you've made the adjustment retighten.

8. Look at the top of the hard top and make sure that the seals are aligned and that all of the seals seem evenly compressed. If the seals are not even, loosen all hardware and readjust.
9. Locate and pull back the top rear portion of the seal on the front doors. Install the plastic spacer under the factory seal on the door. Then put the seal back into its original position and repeat on the opposite side.

If your top is equipped with a wiper blade proceed to step 10, If the top is not equipped with a wiper blade ensure that all hardware is tight and you are finished.

10. Connect both the water hose and the wiring harness to the top. If your top was not originally equipped with a hard top with a wiper you will need to contact Jeep and order the proper parts to install the harness onto the Jeep.



The installation is now finished! If you are having any sealing issues with the top and need help locating the problem or adjusting the top please give us a call at (951) 680 959. Our hours are Monday through Friday 8 a.m. to 5 p.m. Pacific Time. If the issue is urgent and we are not open please feel free to email info@DV8offroad.com with the subject line ****Urgent****

Enjoy your new DV8 Offroad Top!