

Installation Instructions

Bolt-On/Rugged Look Fender Flares
Toyota Tundra (22-ON) FIT-FF985

Important: Please read instructions entirely before installing this product.

Hardware Included	QTY
Extrusion	33.0 ft
Alcohol Wipe	4
Attachment Clip	6

Hardware Included	QTY
Long Screw	2
5mm Spacer	2

Bolt Kit Included	QTY
Nuts	36
Allen Key Bolts	36

Ensure that both left- and right-hand Fender Flares suit the profile of the vehicle. Please take note of the areas where the Fender Flares comes into contact with the vehicle.

PRIOR TO ANY PAINTING & INSTALLATION, PRODUCT SHOULD BE THOROUGHLY INSPECTED FOR ALL COMPONENTS LISTED IN THE TABLES ABOVE. PRODUCT SHOULD ALSO BE TEST FITTED PRIOR TO ANY PAINTING & INSTALLATION. PLEASE CONTACT ROUGH COUNTRY IF YOU HAVE ANY FITMENT QUESTIONS AND OR MISSING COMPONENTS

PAINTING INSTRUCTIONS – If Fender Flares are being painted; do not install edge extrusion until painting is complete. Prior to painting, clean all surfaces to be painted using clean water and a mild detergent, do not use lacquer thinner or any solvent-based products. Wipe completely dry. Best results will be achieved by wiping the areas to be painted with a tack rag just prior to painting. Most automotive paints can be applied directly to the Fender Flares; however, some may require a primer (check paint manufacturer specifications). Good adhesion will be achieved without sanding. Select a paint (and primer if necessary) that is suitable for rigid plastics PMMA (Acrylic). If using a paint system that requires baking, do not expose the product to temperatures above 70°C (158°F). Do not fit the extrusion or any of the hardware to the Fender Flares until the paint is completely dry.

Painted Fender Flares will come with hardware and extrusions pre-assembled. Skip to Step 4 if purchased



STEP 1: Attach the bolts, nuts and washers to each Fender Flare using a 5/32" Allen key and a 3/8" wrench/socket (wrench /socket and Allen key not supplied). Ensure inside of Fender Flares where the rubber seal is attached is clean, using the alcohol wipes provided. Wipe away any residue with a dry clean cloth.

Skip to Step 4 if Fender Flares are pre-assembled

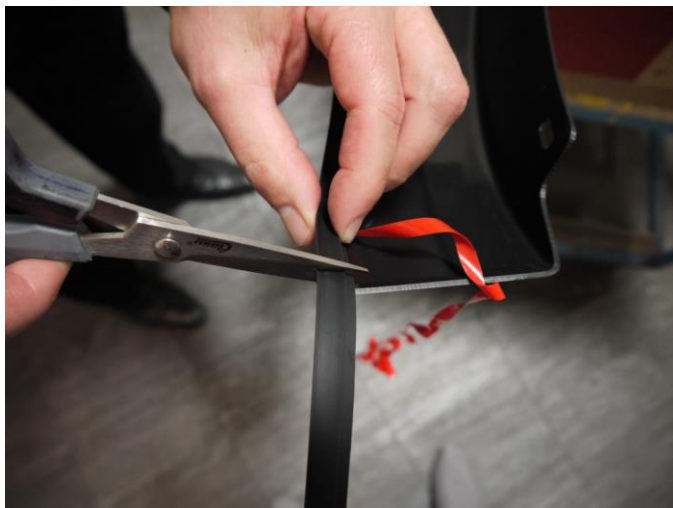
STEP 2: Attach the included rubber seal to the Fender Flares. Peel back 2" of the adhesive backing and position on the Fender Flare. Attach the seal to the Fender Flare, peeling back a few inches at a time. Ensure pressure is used to secure rubber seal to Fender Flare edge. Attach rubber seal along the top leading edge of the Fender Flare where it contacts the vehicle body.

Skip to Step 4 if Fender Flares come pre-assembled

For Technical Support/Warranty Information please call 800-757-7075
EGR Inc., 4000 East Greystone Drive, Ontario, CA 91761

Installation Instructions

Bolt-On/Rugged Look Fender Flares
Toyota Tundra (22-ON) FIT-FF985



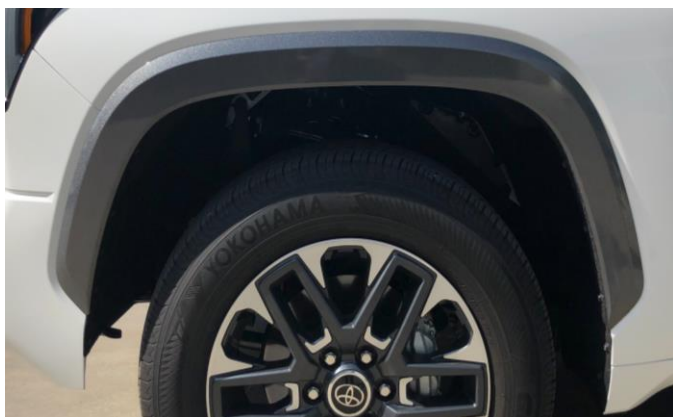
STEP 3: Trim rubber seal at end of each Fender Flare. Save extra rubber seal for install on opposite side Fender Flare and discard any excess once both sides are complete.

IMPORTANT NOTE: Trim rubber seal.

Skip to Step 4 if Fender Flares are pre-assembled



STEP 4: Using a 10mm socket / wrench remove the (2) screws from the inner area of the mud guard. If vehicle comes equipped with mud guard, remove all (3) screws and use a small flat screwdriver to disengage the pin from the plug at the base of the mud guard. Remove mud guards completely and retain all components. Mud Guards cannot be installed with these Fender Flares.



STEP 5: Clean the body areas where the Fender Flares will make contact with the vehicle surface. Ensure fenders are dry prior to install. Turn tires facing outward to provide additional room and ease hardware installation per side.



STEP 6: Hold Fender Flare on the vehicle in the position of best fit. Note where above marked slots in the Fender Flare, align with the existing mounting holes on the vehicle. Remove the Fender Flare.

Picture may differ from actual part

Installation Instructions

Bolt-On/Rugged Look Fender Flares

Toyota Tundra (22-ON) FIT-FF985



STEP 7: Using a 10mm socket / wrench, remove the (2) front and (2) rear screws from the inner splashguard. Retain these for later re-install.



STEP 8: Locate and remove the (3) factory screw locations in the upper wheel well. Retain for later re-install.



STEP 9: Secure attachment clips by sliding clip into Fender Flare slot and using the factory screws that were previously removed in Step: 8 to attach the clips into corresponding existing holes in upper inner splashguard. Do not fully tighten screws at this stage.

Installation Instructions

Bolt-On/Rugged Look Fender Flares
Toyota Tundra (22-ON) FIT-FF985



STEP 10: Begin to loosely install factory screws that were removed in prior Steps: 7 & 8 into slotted hole locations. Once all factory screws have been re-installed, apply pressure and begin to tighten in the order shown above.

Picture may differ from actual part



STEP 11: If necessary, make minor adjustments to the flare's position to achieve the best fit. Ensure rubber seal is sitting flat against vehicle. When satisfied fully tighten all screw locations, in the above order in which they were just installed. Repeat installation for opposite side.

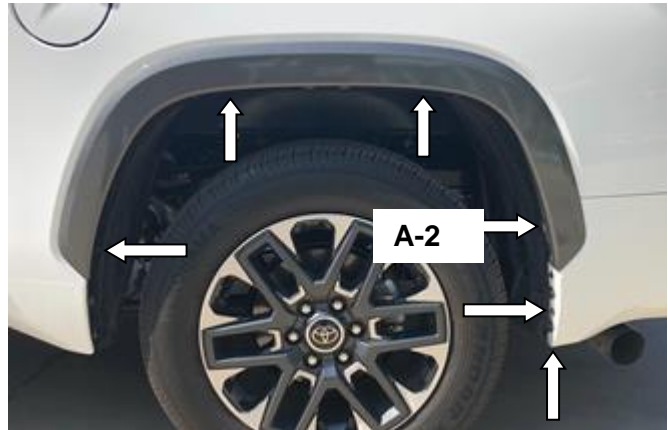
Picture may differ from actual part

Installation Instructions

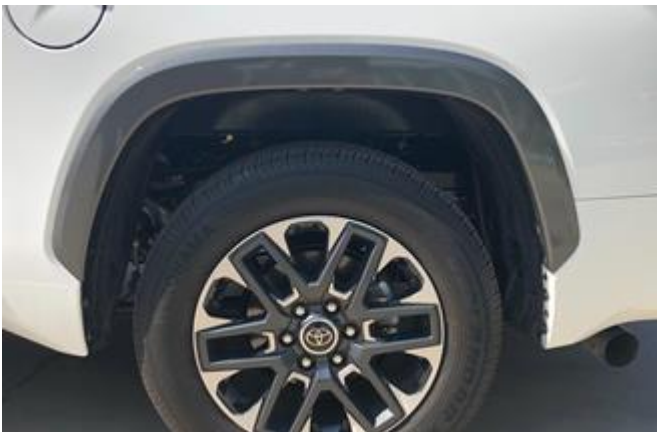
Bolt-On/Rugged Look Fender Flares
Toyota Tundra (22-ON) FIT-FF985



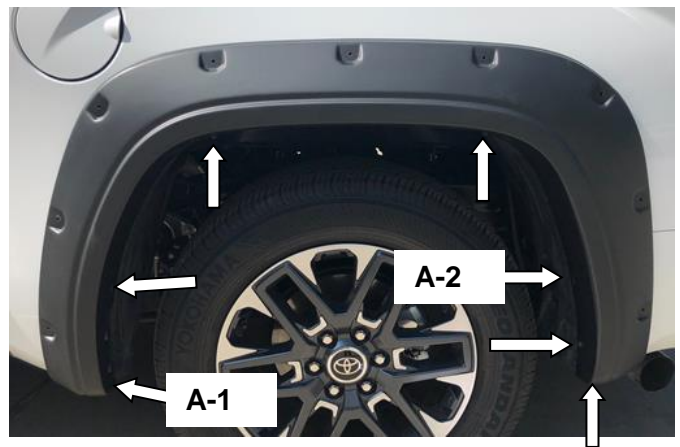
STEP 12: Remove factory plug by pinching back side of plug and pull to release. Retain for later use. **Make special note of A-1.**



STEP 13: Using a 10mm socket / wrench remove the 6 screws from the inner area of the mud guard and retain for later re-install. If vehicle is equipped with factory mud guard, remove by using a small flat screwdriver disengage the pin from the plug at the base of the mud guard. Remove mud guards completely and retain all components. Mud Guards cannot be installed with these Fender Flares. **Make special note of A-2.**



STEP 14: Clean the body area where the Fender Flares will contact vehicle surface. Ensure fender surface is dry prior to install.

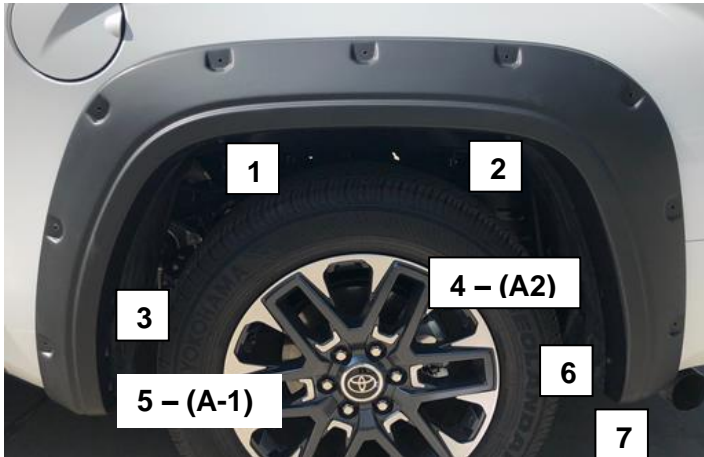


STEP 15: Hold Fender Flare on the vehicle in the position of best fit. Note where all the slots in the Fender Flare align with existing mounting holes on the vehicle. Again, make note of position (A-2) as it will require hardware in the kit supplied. All remaining positions will re-use factory screws and plugs.

Picture may differ from actual part

Installation Instructions

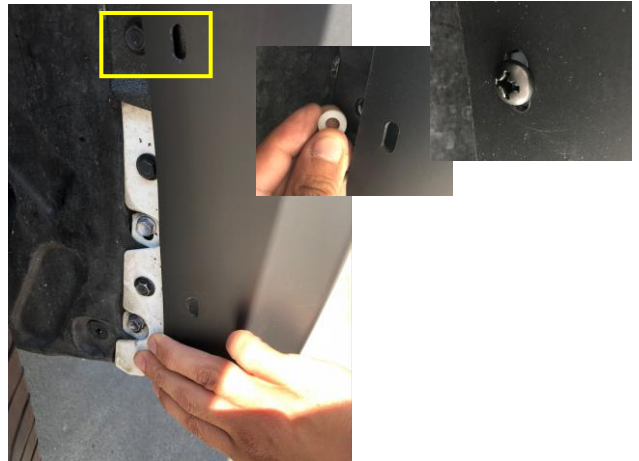
Bolt-On/Rugged Look Fender Flares
Toyota Tundra (22-ON) FIT-FF985



STEP 16: Begin to loosely install factory screws that were removed in prior Steps: 12 & 13 into the corresponding factory attachment points. Once all factory screws have been re-installed, begin to fasten in the order shown above. Do not fully tighten screws at this time.

#4 (A2) requires the long screw and spacer supplied in kit.
#5 (A1) re-use plug that was removed in prior Step: 12

Picture may differ from actual part



STEP 17: POSITION (A2) - Ready the spacers (and long screw) to go in behind the Fender Flare to fill the gap between the flare and the vehicle.



STEP 18: POSITION (A1): Re-use the factory plug that was removed in prior Step: 12



STEP 19: If necessary, make minor adjustments to the flare's position to achieve the best fit. Ensure rubber seal is sitting flat against vehicle. When satisfied, fully tighten all screw locations in the above order in which they were just installed. Repeat installation for opposite side.

Picture may differ from actual install