

97-00 Jeep 1" Lift Body Mount Instructions

Note: It is recommended that this set be professionally installed if you are unfamiliar with this type of work, and a factory service manual be purchased prior to performing any work on your vehicle for proper disassembly, reassembly and torque specs. These instructions are intended for bushing removal and install of Energy Suspension polyurethane bushings, once you have removed the factory component from your vehicle.

Removal

1. Fan shroud modification

Before beginning anything, first loosen the fan belt to remove the fan from the water pump, then remove the fan shroud. The fan shroud must be notched out to clear the lower radiator hose and trans cooler lines (figure 1). Drill new holes in the radiator 1" lower than the original holes for fan clearance, using 1/4" drill bit (figure 2). Note: For added clearance, reinstall the fan shroud after the body mounts have been installed.

2. Shifter bracket modification

Next remove the transfer shifter bracket by removing the 4 bolts underneath the carpet on the drivers side of the transmission tunnel (figure 3). Remove the bracket from underneath the vehicle. Remove the linkage bushing bracket and drill out the holes to 5/16".

Mount the supplied 1" drop adapter plate using the supplied countersink bolts and lock nuts. Then remount the linkage bushing bracket onto the adapter plate with the supplied nuts and bolts (figure 4). Note: The shifter bracket must be installed after body mounts are in place.

3. Body mount replacement

Note: Open the hood before jacking up the body and remove the dipstick. Watch that wires, brake lines, fuel lines and fuel filler hoses are not stretched. Next loosen all body mount bolts and remove bolts from pos.#1 and pos.#5 only (to keep from binding the body when installing mounts on either side). Only raise the body high enough to remove and replace the mounts. Install the mounts one side at a time with the opposite side loosened only. Refer to page 2 of the instructions for proper placement of the bushings. You may need to file the inside of the frame perch to remove any burrs before installing the upper mounts. When jacking up the body use a 2x4 or 4x4 for maximum support and weight distribution (figure 5). Never place the jack directly on body panels. Re-torque all the fasteners after all the body mounts are in place and body is sitting on mounts.

Reinstall transfer shifter bracket with 1" adapter plate (figure 6). Remove front body mount bumper from under either side of front grill and install supplied 1" taller bumpers (figure 7). Recheck all areas of vehicle worked on for proper clearances prior to use. Example: fan clearance, brake lines, steering, wiring, transfer operation, etc.

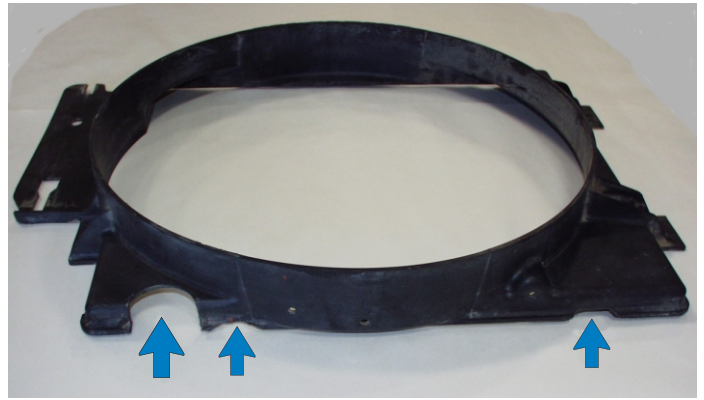


Figure 1

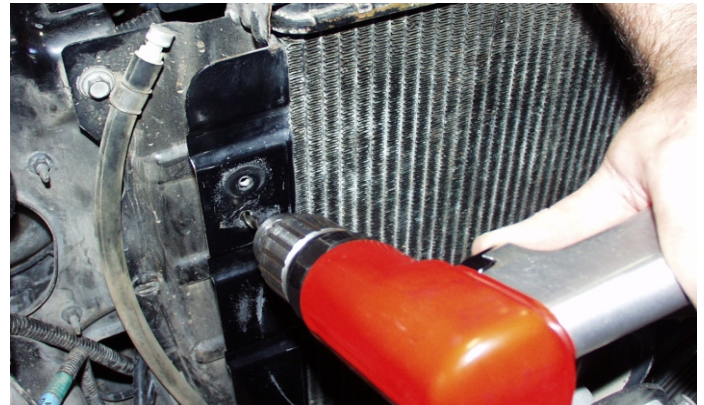
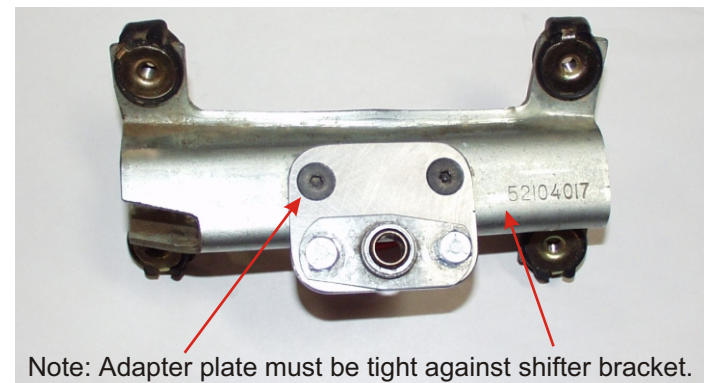


Figure 2



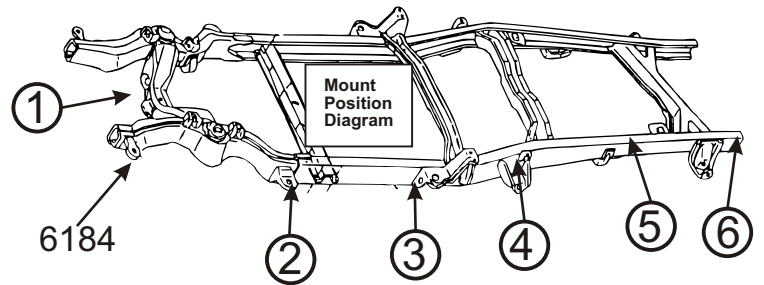
Figure 3



Note: Adapter plate must be tight against shifter bracket.

Figure 4

© 2003 Energy Suspension. All rights reserved.
May not be reproduced, in any form, or by any means,
without the written consent of Energy Suspension.

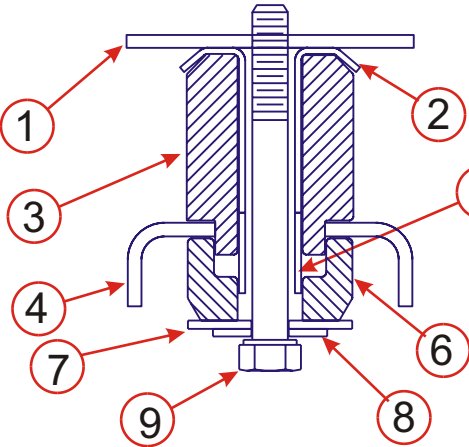


Position 1,5,6

- 1 Body
- 2 Factory washer/sleeve
- 3 4189 Upper
- 4 Frame
- 5 15.10.439.39
Spacer sleeve
7/8" x 5/8" x 1"
- 6 4190 Lower
- 7 15.03.09.39
2" x 7/16" Washer
- 8 15.03.04.39
1 1/8" x 7/16" Washer
- 9 15.05.09.39
7/16-14 x 4" Bolt

Position 2,3,4

- 1 Body
- 2 Factory washer/sleeve
- 3 4187 Upper
- 4 Frame
- 5 15.10.439.39
Spacer sleeve
7/8" x 5/8" x 1"
- 6 4188 Lower
- 7 15.03.49.39
2 1/2" x 1/2" Washer
- 8 15.03.83.39
1 1/16" x 1/2" Washer
- 9 15.05.63.39
1/2-13 x 4



Must reuse factory washer/sleeve

Parts Diagram

Note: It is recommended that you re-check all the body mount fasteners after 500 miles.



Figure 5



Figure 6



Figure 7

Parts List			
Part Number	Quantity	Position	Description
4189	5	1,5,6	Body Mount, Upper
4190	5	1,5,6	Body Mount, Lower
4187	6	2,3,4	Body Mount, Upper
4188	6	2,3,4	Body Mount, Lower
6184	2	Front Grill	Front Body Mount Bumper
15.03.49.39	6	2,3,4	2 1/4" x 1/2" Flat Washer
15.03.83.39	6	2,3,4	1 1/16" x 1/2" Flat Washer
15.05.63.39	6	2,3,4	1/2-13 x 4 1/2" Bolt
15.03.09.39	5	1,5,6	2" x 7/16" Flat Washer
15.03.04.39	5	1,5,6	1 1/8" x 7/16" Flat Washer
15.05.09.39	5	1,5,6	7/16-14 x 4" Bolt
15.05.62.42	2	Shift linkage	1/4-20 x 3/4" Flat Head Socket Screw
15.10.439.39	11	1,2,3,4,5,6	7/8" x 5/8" x 1" Spacer Sleeve
15.08.80.39	1	Shift linkage	1" Adapter Plate
15.05.61.39	4	Fan Shroud	1/4-20 x 3/4" Bolt
15.05.61.39	2	Adapter Plate	1/4-20 x 3/4" Bolt
15.07.20.40	4	Fan Shroud	1/4-20 Nylon Lock nut
15.07.20.40	4	Adapter Plate	1/4-20 Nylon Lock nut
15.03.74.40	7	Fan Shroud	7/8" x 1/4" Flat Washer
15.03.81.39	1	Fan Shroud	1 1/4" x 1/4" Fender Washer
17329	1	Page 1	Instructions
17330	1	Page 2	Instructions

© 2003 Energy Suspension. All rights reserved. May not be reproduced, in any form, or by any means, without the written consent of Energy Suspension.