

# Installation Instructions for Set # 3-4150

2001 - 02 Chevy Silverado 2500 HD Standard Cab & Extended Cab Pickup

Note: It is recommended that this set be professionally installed if you are unfamiliar with this type of work, and a factory service manual be purchased prior to performing any work on your vehicle for proper disassembly, reassembly, and torque specs. These instructions are intended for bushing removal and install of Energy Suspension polyurethane bushings, once you have removed the factory component from your vehicle.

## Removal

**Note:** When disassembling, note the quantity and positions of any shims that may have been inserted for body alignment. These shims will have to be reused to insure proper body alignment.

**Remember:** Only raise body high enough to remove & replace mounts. Always watch the fan shroud for sufficient clearance when raising the body. When jacking the body use a long enough 2X4 or 4X4 for maximum support. Never put jack directly on body panels.

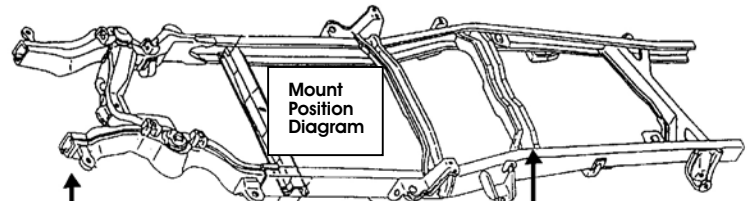
Install mounts one side at a time with bolts on other side loosened only.

**Retorque to factory specs.**

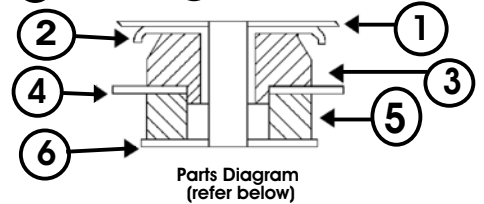
INST.#17358  
1/9/03 JTL

**ENERGY**  
**SUSPENSION**

1131 VIA CALLEJON, SAN CLEMENTE, CA 92673



Must reuse factory sleeves and fasteners.



### Position # 1-4

1. Body
2. Factory washer with Sleeve
3. 4200
4. Frame
5. 4201
6. Supplied washer

© 2003 Energy Suspension. All rights reserved.  
May not be reproduced, in any form, or by any means, without the written consent of Energy Suspension.

# Installation Instructions for Set # 3-4150

2001 - 02 Chevy Silverado 2500 HD Standard Cab & Extended Cab Pickup

Note: It is recommended that this set be professionally installed if you are unfamiliar with this type of work, and a factory service manual be purchased prior to performing any work on your vehicle for proper disassembly, reassembly, and torque specs. These instructions are intended for bushing removal and install of Energy Suspension polyurethane bushings, once you have removed the factory component from your vehicle.

## Removal

**Note:** When disassembling, note the quantity and positions of any shims that may have been inserted for body alignment. These shims will have to be reused to insure proper body alignment.

**Remember:** Only raise body high enough to remove & replace mounts. Always watch the fan shroud for sufficient clearance when raising the body. When jacking the body use a long enough 2X4 or 4X4 for maximum support. Never put jack directly on body panels.

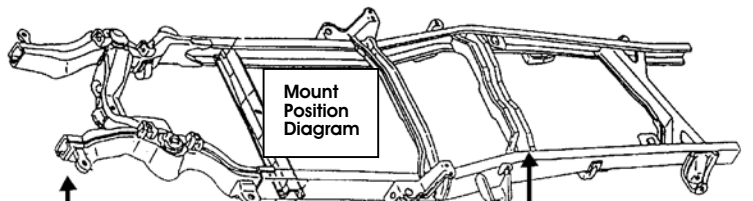
Install mounts one side at a time with bolts on other side loosened only.

**Retorque to factory specs.**

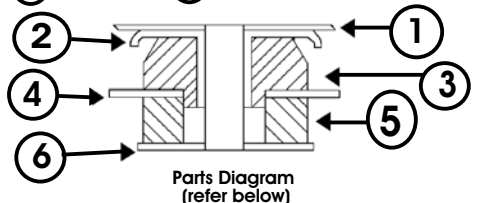
INST.#17358  
1/9/03 JTL

**ENERGY**  
**SUSPENSION**

1131 VIA CALLEJON, SAN CLEMENTE, CA 92673



Must reuse factory sleeves and fasteners.



### Position # 1-4

1. Body
2. Factory washer with Sleeve
3. 4200
4. Frame
5. 4201
6. Supplied washer

© 2003 Energy Suspension. All rights reserved.  
May not be reproduced, in any form, or by any means, without the written consent of Energy Suspension.