

INSTRUCTION SHEET FOR SET #8.3120 TOYOTA MATRIX/COROLLA



1131 VIA CALLEJON, SAN CLEMENTE, CA 92673

It is recommended that if you are unfamiliar with this type of work that you refer to a qualified service center specializing in this type of work. It is also recommended that if you choose to do this work yourself that a factory service manual be obtained for the proper procedures pertaining to removal, replacement and proper torque specifications for your vehicle. This instruction set is intended as a guideline for the safe installation of Energy Suspension's Polyurethane. Wheel alignment is almost always disturbed when removing/replacing suspension components. It is recommended that you have the alignment checked on your vehicle at a qualified alignment shop.

© 2005 Energy Suspension. All rights reserved.
May not be reproduced, in any form, or by any means,
without the written consent of Energy Suspension.

BILL OF MATERIAL

- 2 - 3459 Upper Vertical Bushing
- 2 - 3304 Middle Vertical Bushing
- 2 - 3404 Lower Vertical Bushing
- 4 - 2413 Horizontal Bushing
- 2 - 0.875"x0.563"x2.350" Sleeves
- 1 - 17441 Instruction sheet
- 2 - 9.11101 Grease Cups

Remove the OEM rubber bushings, using heat to break down their glue bond. **DO NOT remove the metal shell** pressed in at the vertical position. Also don't throw away the inner metal sleeve, it is reused. Now de-burr any rough edges and clean out any leftover debris at the vertical and horizontal positions of the arm.

VERTICAL BUSHINGS MUST BE INSTALLED CORRECTLY!!!!!!!

- The center bushing #3304 must be installed with the engraved arrow pointing towards front of car, or the horizontal position **Point A**. If you looked thru the horizontal eye, **Point A**, the cross-section of the vertical bushing assembly would look like **Diagram V**.

Do not grease the I.D. of the arm at the vertical position or the O.D. of #3304 bushing. But do grease the I.D. of the bushing and the O.D. of the OEM "oval" sleeve. The movement is suppose to be between the sleeve and the bushing, not the bushing and the arm. Reassemble and tighten all fasteners to factory torque specifications.

HELPFUL DIRECTION GUIDE:

There is an arrow engraved into the #3304 part. Make sure that it faces the front of the car, or towards the horizontal position.

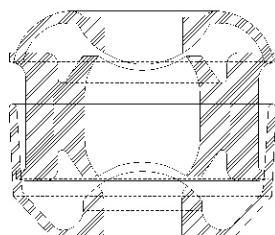


Diagram V

