

# INSTALLATION SHEET

## TUFF TONNO III™

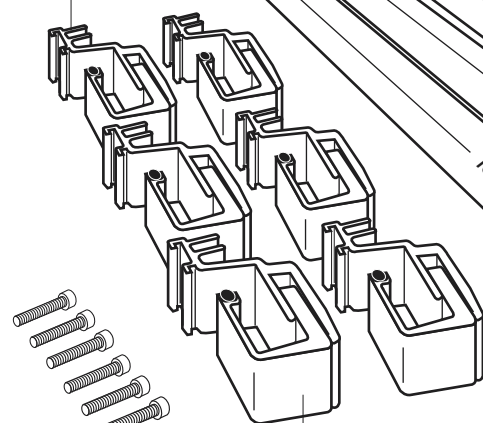
## & Saber TONNO

## extang



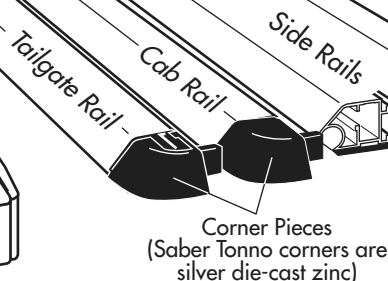
**NEW Improved**  
"DOUBLE HOOK"  
Side Rail Clamps

Spring Bows  
(x3-Short Bed)  
(x4-Long Bed)



Clamp Bolts

"U" Shaped Clamps  
Note: LONG BED trucks have  
8 clamps and 4 bows.



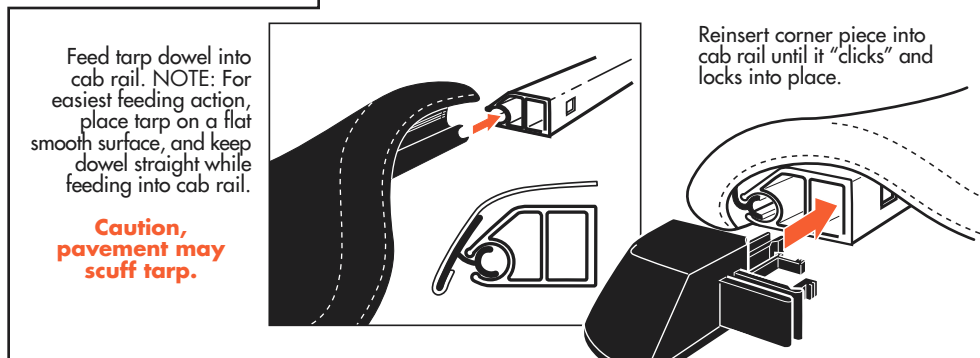
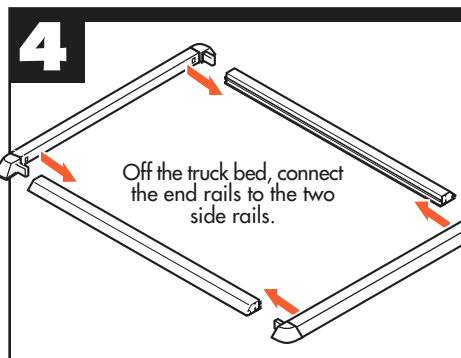
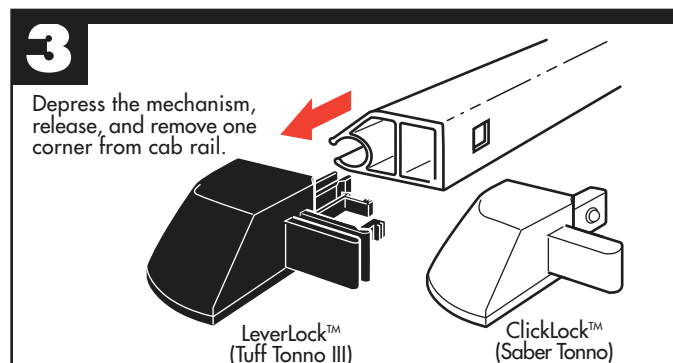
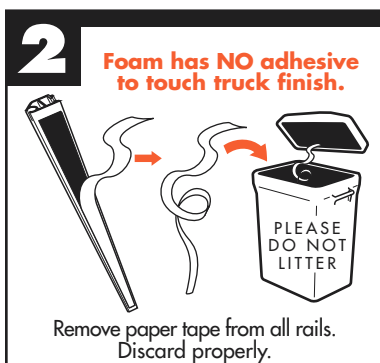
Corner Pieces  
(Saber Tonno corners are  
silver die-cast zinc)



Allen Wrench

**MISSING PARTS???**  
call Extang at  
**1-800-877-2588**  
Any and all needed parts  
will be shipped  
to you directly.  
(DO NOT return  
whole kit to store)

**PARTS INCLUDED IN YOUR KIT.** You may want to lay them out in this manner for accessibility.



**extang**  
Stands for Quality

Extang Corporation  
1901 E. Ellsworth Rd.  
Ann Arbor, MI 48108  
734 677-0444, Fax: 734 677-8409

Visit us at:  
**www.extang.com**  
Item No. 0018-1202 RH Printed in U.S.A.

## For an OVER-THE-RAIL Bedliner

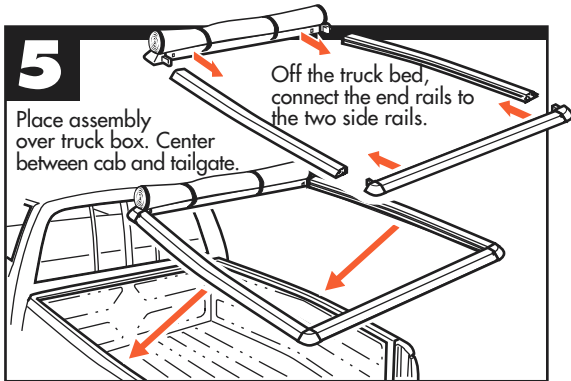


DIAGRAM  
**A**

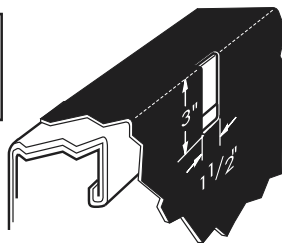
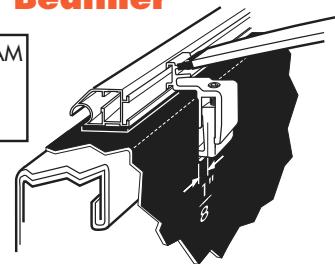
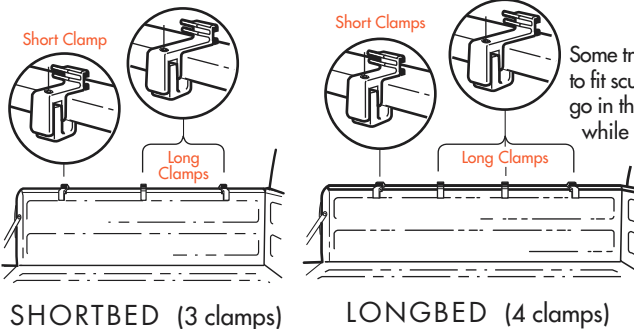
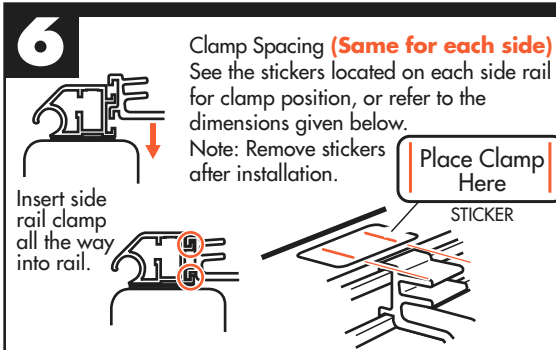


DIAGRAM  
**B**



For each clamp mark on your bedliner a 1-1/2" x 3" hole as shown above. Remove clamp. Cut holes in bedliner. Reinsert side rail clamp. Return to step 5.

Side rail clamped to bed with bow attached.

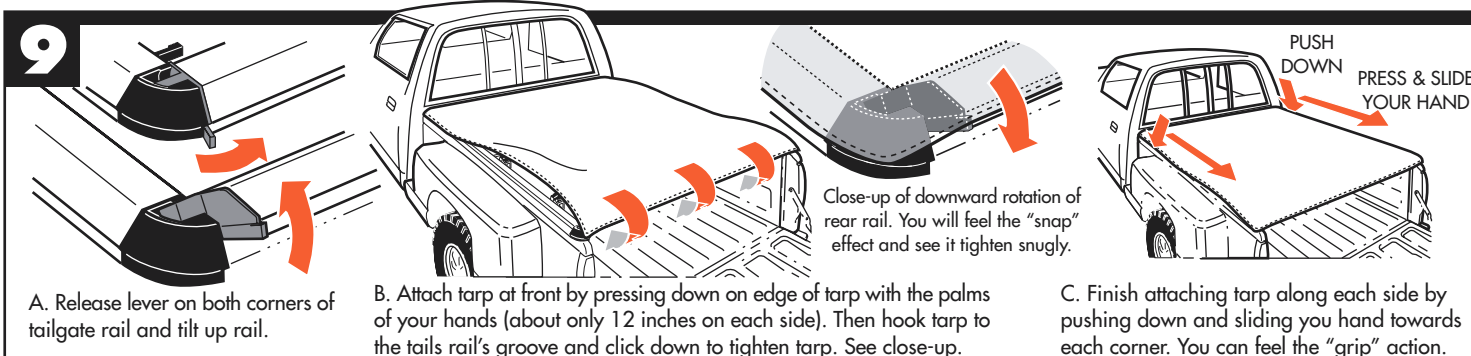
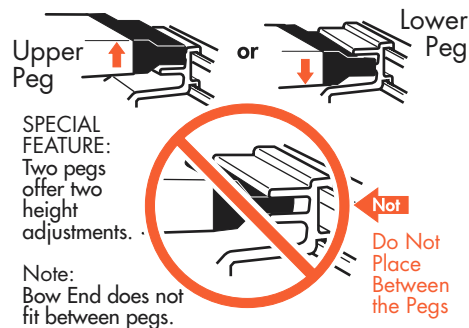
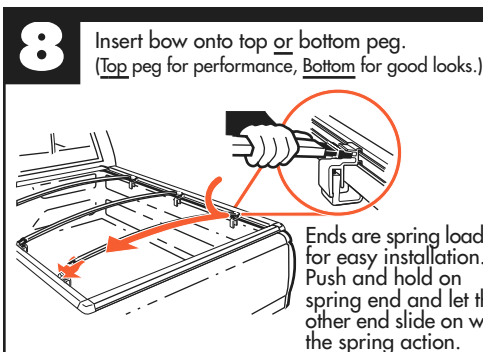
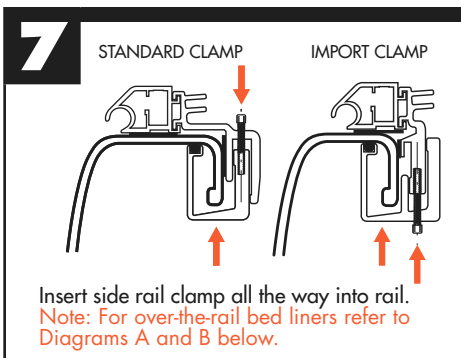


### Longer Clamps

Some trucks use two lengths of bracket to fit sculpted sidewalls. Longer clamps go in the forwardmost (Cab) positions while the shorter pair hold the rails at the rear (tailgate) end.

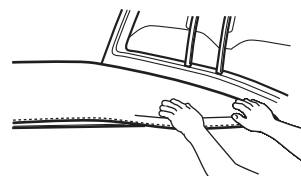
### FOR INSTALLATION IN THE FOLLOWING TRUCK MODELS:

Ford HD Long-Bed  
Ford HD Short-Bed

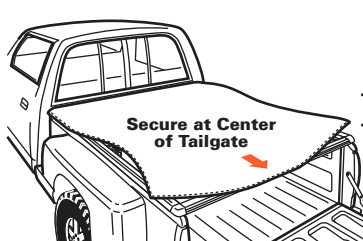


### For Tuff Tonno III:

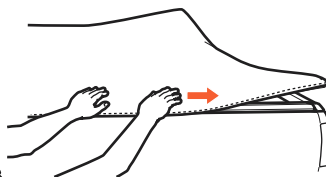
### For Saber Tonno:



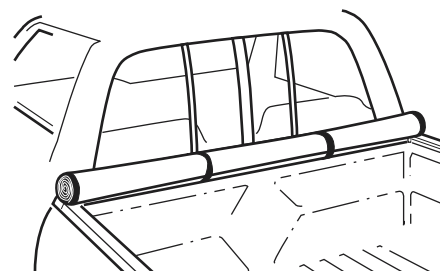
A. Attach tarp from front corner (12 inches). Repeat for each side.  
Note: Pull tarp out while pressing down in center of the side strip to flex hook open for easy attachment.



B. Secure tarp at the middle of tailgate rail.



C. Finish attaching tarp along each side by pushing down and sliding your hand front to rear, and on tailgate rail, by pressing out from the center.



### EASY USE OF TRUCK BED

Tarp may be rolled up and secured with Velcro® for bulk hauling