

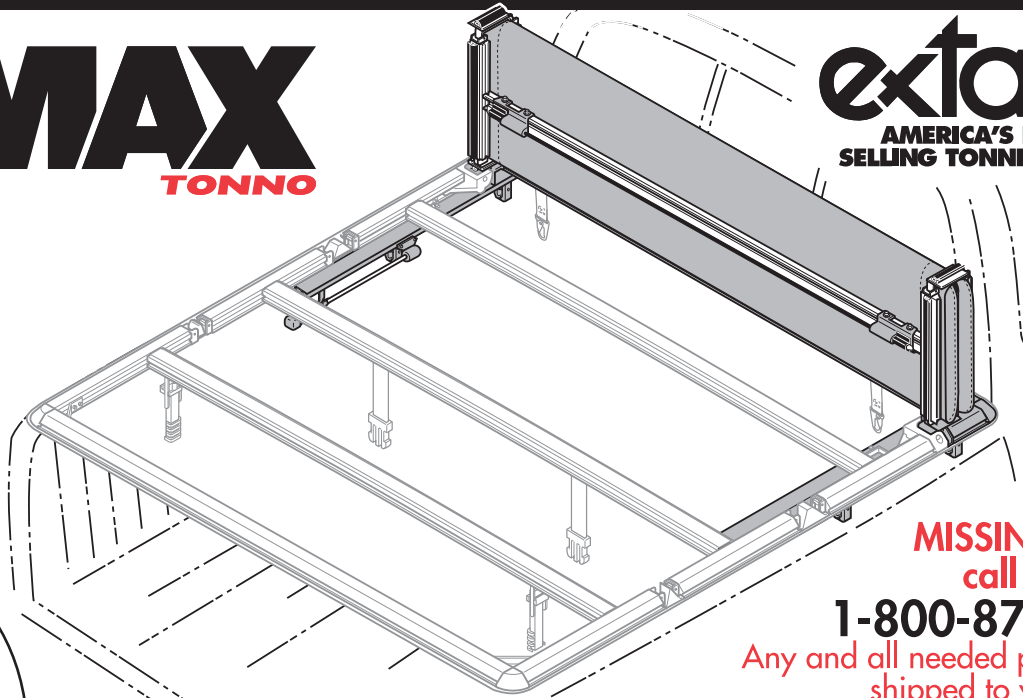
INSTALLATION SHEET

e-MAX

TONNO

extang

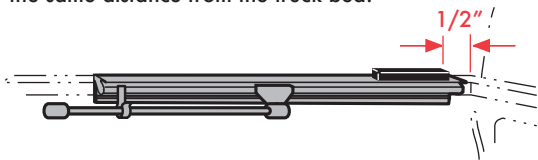
AMERICA'S BEST SELLING TONNEAUS



- 1/2" Socket Wrench
- 3/16" Allen Wrench

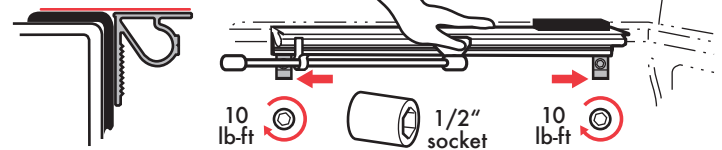
MISSING PARTS?
call Extang at
1-800-877-2588
Any and all needed parts will be
shipped to you directly.
(DO NOT return whole kit to store)

1 Position bedrail on truck bed side 1/2" from inside of front bed wall. **NOTE:** Make sure that both side rails are positioned exactly the same distance from the truck bed.



Align the top of the underbody rail flush with the top of the truck bed and secure the clamps as shown.

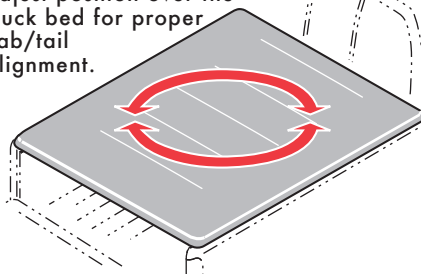
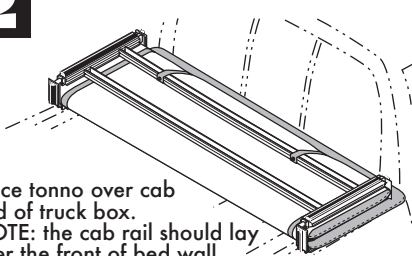
NOTE: Clamps should be located as close to the underbody rail ends as possible.



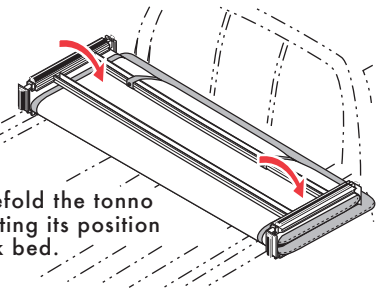
2

Unfold the tonno fully and adjust position over the truck bed for proper cab/tail alignment.

Place tonno over cab end of truck box. **NOTE:** the cab rail should lay over the front of bed wall.

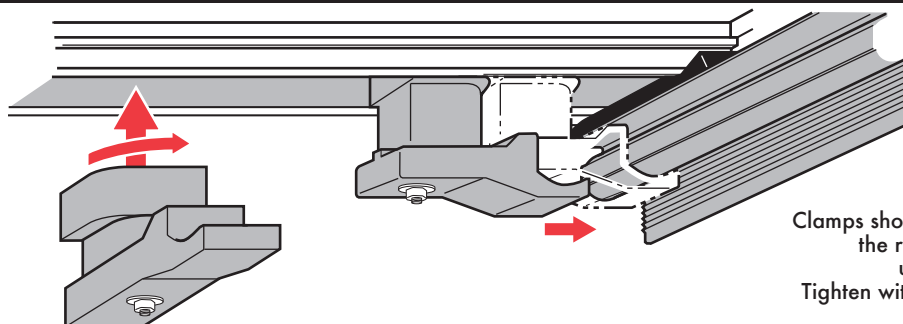


Carefully refold the tonno without shifting its position on the truck bed.



3

Insert sliding clamp into attachment bow and rotate 90°, then secure cab rail to underbody rail with sliding clamp.



Clamps should be fully secured under the radius section of the underbody rail.
Tighten with 1/2" socket to 10 lb-ft.

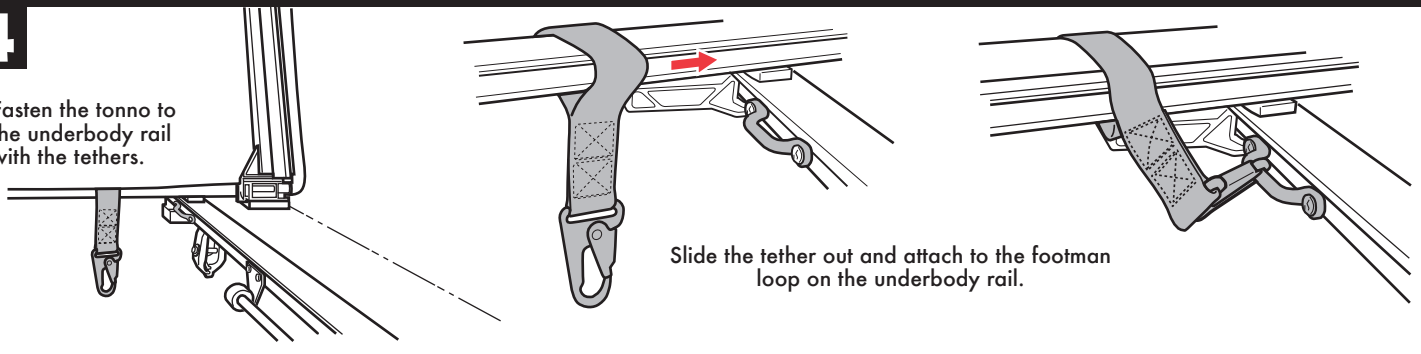
Extang Corporation
5400 S. State Rd.
Ann Arbor MI 48108
734-677-0444, Fax: 734-677-8409

Register your warranty at:
extang.com

Item No. 0615-1401 RH Printed in U.S.A.

4

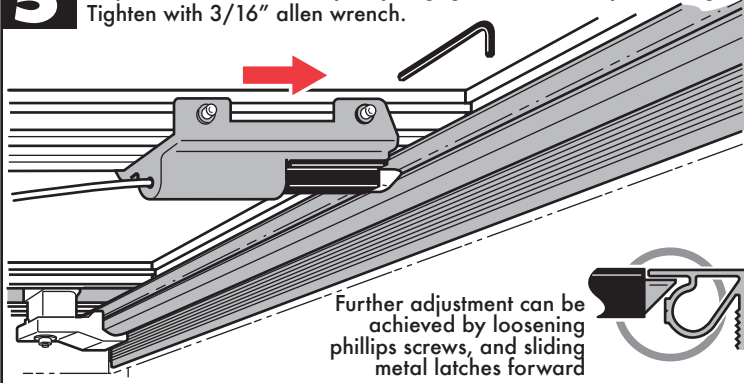
Fasten the tonno to the underbody rail with the tethers.



Slide the tether out and attach to the footman loop on the underbody rail.

5

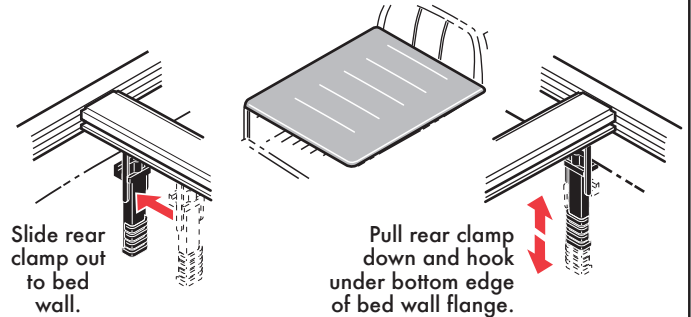
Adjust slam latches so they fully engage the underbody rail flange. Tighten with 3/16" allen wrench.



Further adjustment can be achieved by loosening phillips screws, and sliding metal latches forward

6

With tailgate open, completely unfold the tonno and secure to the truck bed with spring clamps.

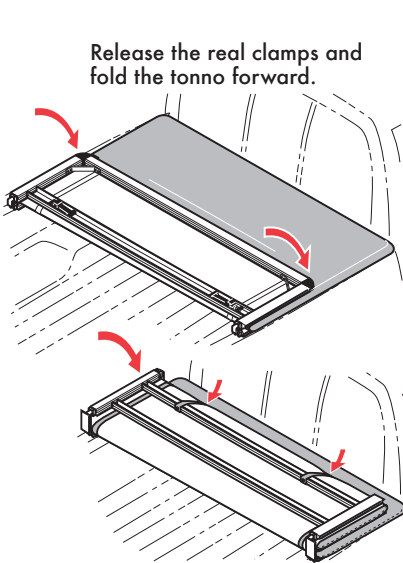


Slide rear clamp out to bed wall.

Pull rear clamp down and hook under bottom edge of bed wall flange.

Stow Tonno for convenient use

Release the rear clamps and fold the tonno forward.



IMPORTANT: Before folding the second section of the tonno, rear clamps must be stowed into the rear bow to prevent damage to fabric.

Failure to stow handle will puncture tarp and void warranty.

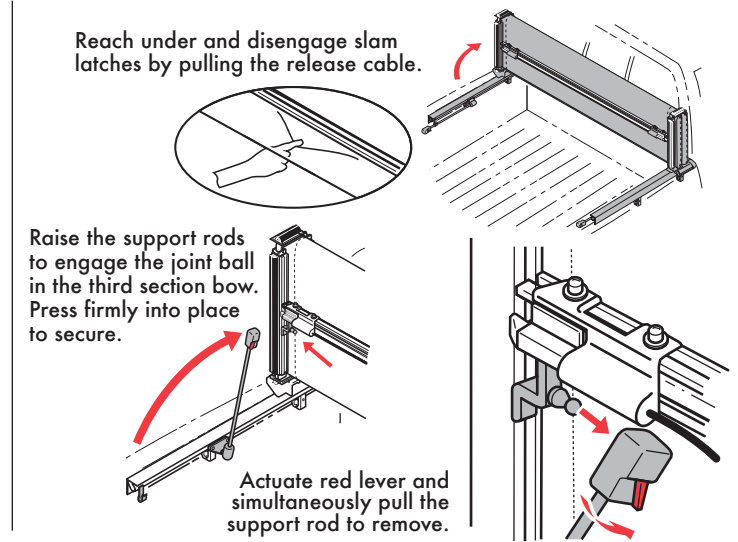
Fold the tonno forward and fasten the straps in the middle section to the front rail.

Raise the Tonno panel for more storage

Reach under and disengage slam latches by pulling the release cable.

Raise the support rods to engage the joint ball in the third section bow. Press firmly into place to secure.

Actuate red lever and simultaneously pull the support rod to remove.



Remove any snow or foreign matter before folding cover.



IMPORTANT NOTICE

While driving, cover must be completely flat and secure with all clamps in the closed position or completely folded up (all panels) and secured at the cab. **DO NOT DRIVE** with cover in partially opened position.

Note: Tarp cannot be removed from aluminum frame. Attempting to do so will cause damage and void the warranty.

Do not tow vehicle from the rear with this product in place.

