



Installation Instructions

Eibach Springs, Inc. • 264 Mariah Circle • Corona, California 92879-1751 • USA • Tech Support 800-222-8811 Ext 114

PRO-LIFT # E30-59-005-01-20

2003-2009 Lexus GX470

Note: The Pro Truck Leveling springs must not be used with the OE shocks. Extended travel shocks are required to avoid damage to the suspension.

Note: Please refer to the instructions on the following page for proper spring fitment when using the Eibach Pro Sport Truck Dampers

Kit Contents	Description	Part Number	Qty
	Front Spring	F31-59-005-01-FA	2
	Instructions	E30-59-005-01-20INST	1

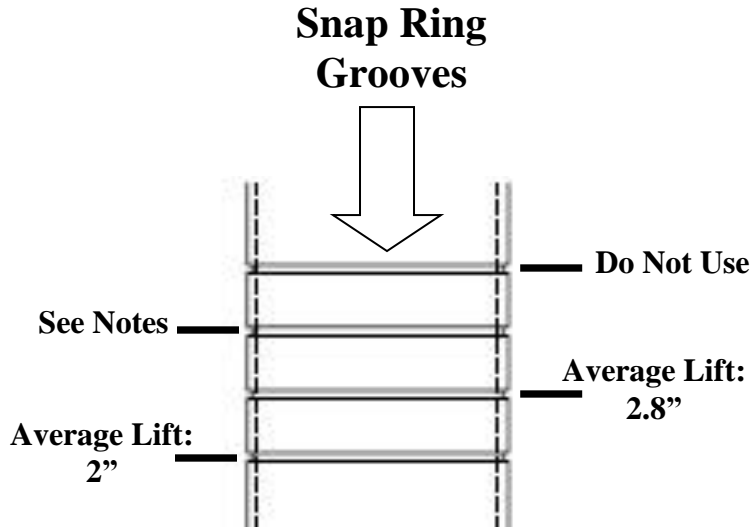
NOTES: Read All Instructions Before Beginning Installation

- Only qualified mechanics experienced in the installation and removal of suspension components should perform this installation.
- Use of a hoist is highly recommended and will substantially reduce installation time.
- Never work on or under a vehicle unless it is properly supported by safety stands and wheels are blocked.
- Never use impact wrenches or impact guns to install or remove shock absorber piston components, shafts and piston rod nuts.
- **PRO-LIFT** springs should be installed with the Eibach Logo right side up. All original stock spring isolators, and tubing should be retained from the stock springs and used when installing the **PRO-LIFT** Springs.
- After installation, it is always important to inspect and adjust the following if necessary:
 - Wheel alignment such as camber, caster & toe
 - Tire and/or wheel fender clearance, when aftermarket tires and wheels are used.
 - Brake line clearance and attachments
 - Brake anti-locking and anti-skid system sensors

Additional Eibach Components Available For Your Truck

Eibach Kits	Part Number	Description	Front	Rear
Pro Truck Sport Leveling front dampers	E60-59-005-01-10	Off-Road Performance	+0-2.5"	N/A
Pro Truck Sport Leveling rear dampers	E60-82-008-02-01	Off-Road Performance	N/A	0-1"

Spring Seat Fitting Instructions for Eibach Pro Sport Truck Dampers



Important: Ensure that the snap ring is fully seated in the snap ring groove (you should be able to rotate the snap ring manually/by hand). **Note: Improper installation will cause permanent damage to the shock. Please refer to the Pro Truck Sport Damper instructions for more info regarding proper installation and fitment.**

Notes:

- Do Not use the top groove in conjunction with the Eibach Pro Lift Spring. Doing so will cause damage to the suspension and a possible loss of control of vehicle.
- The 2nd and 3rd snap ring grooves are to be used to accommodate extra weight, such as heavy duty bumper, winch, and other miscellaneous modifications that may contribute to a lower overall ride height.
- Use of the 2nd and 3rd grooves to get more than 2" of lift on a stock vehicle may cause a degradation of ride quality.
- Average lift measurements shown are for Pro Truck Sport Dampers when used in conjunction with Eibach Pro Lift Springs. The lift amounts are based on a stock vehicle with no added aftermarket accessories or additional weight.



Installation Instructions

Eibach Springs, Inc. • 264 Mariah Circle • Corona, California 92879-1751 • USA • Tech Support 800-222-8811 Ext 114

PRO-LIFT # E30-59-005-01-02

2003-2009 Lexus GX470

Note: The Pro Truck Leveling springs must not be used with the OE shocks. Extended travel shocks are required to avoid damage to the suspension.

Kit Contents	Description	Part Number	Qty
	Spring, Rear	F31-59-005-01-RA	2
	Upper Spring Perch Adapter	8001271	2
	Lower Spring Locator	8001288	2
	Screw, Hex M12-1.75 x 40mm L	H13025576	2
	Nut, M12-1.75 Nylock	H63025500	4
	Washer, M12 Flat	H50025200	2
	Washer, Fender	H57085200	2
	Screw, Hex, M12-1.75 x 30mm L	H13155542	2
	Zip Tie	H70065500	1
	Instructions	E30-59-005-01-02INST	1

NOTES: Read All Instructions Before Beginning Installation

- **Only qualified mechanics experienced in the installation and removal of suspension components should perform this installation.**
- **Use** of a hoist is highly recommended and will substantially reduce installation time.
- **Never work on or under a vehicle unless it is properly supported by safety stands and wheels are blocked.**
- **Never use impact wrenches or impact guns** to install or remove shock absorber piston components, shafts and piston rod nuts.
- **PRO-LIFT** springs should be installed with the Eibach Logo right side up. All original stock spring isolators, dampers and tubing should be retained from the stock springs and used when installing the **PRO-LIFT** Springs.
- **After** installation, it is always important to inspect and adjust the following if necessary:
 - Wheel alignment such as camber, caster & toe
 - Tire and/or wheel fender clearance, when aftermarket tires and wheels are used.
 - Brake line clearance and attachments
 - Brake anti-locking and anti-skid system sensors
- **Tire Rotation:** In order to increase the life of your tires, it is recommended to rotate your tires every 3,000 miles.

Rear Suspension Removal and Installation

1. Raise the rear of the vehicle until the wheels are off the ground and the suspension is fully unloaded. **Note:** Never work on or under a vehicle that is not supported by the proper safety equipment.

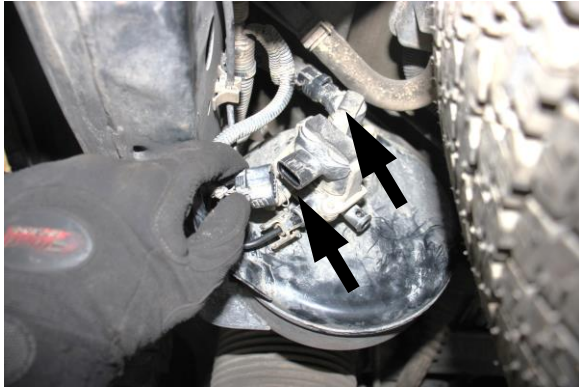


Photo 1

2. Disconnect the air compressor electric connections as shown. (See Photo 1)



Photo 2

3. Disconnect the air lines from the compressor as shown. (See Photo 2)

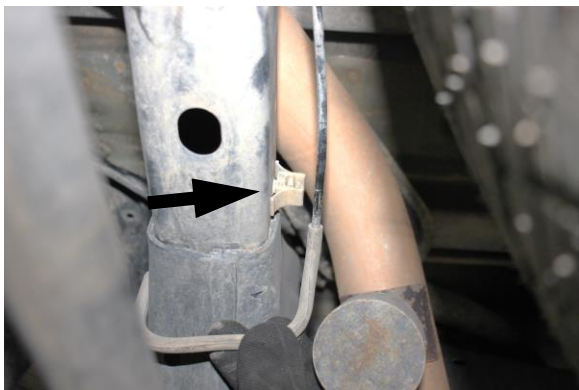


Photo 3



Photo 4

4. Unclip the air bag air lines from the frame as shown. (See Photos 3 & 4)



Photo 5

5. Loosen and remove the hardware that secures the end link to the anti-roll bar, then, disconnect the end link from the bar. (See Photo 5)

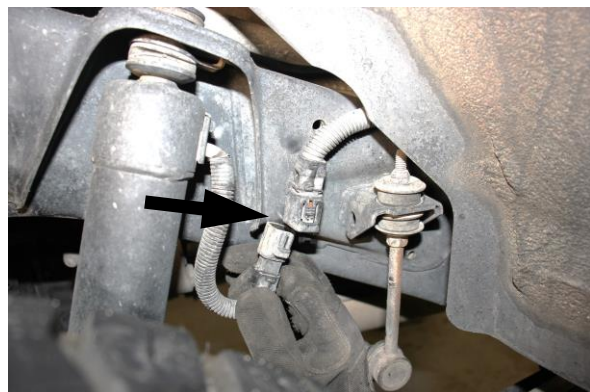


Photo 6



Photo 7



Photo 8

6. Support the rear axle with a screw jack and disconnect the shock electrical connection, then, loosen and remove the hardware that secures the upper and lower shock mounts and remove the shock from the vehicle. (See Photos 6, 7 & 8)



Photo 9

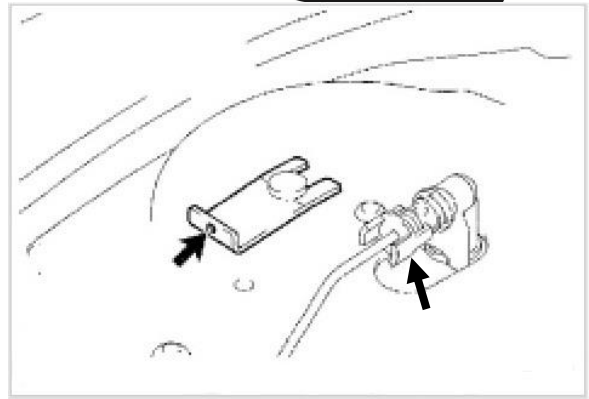


Photo 10

7. Located on top of the spring pocket, disengage and remove the spring clip retainer, also disconnect the air line. (See Photos 9 & 10)

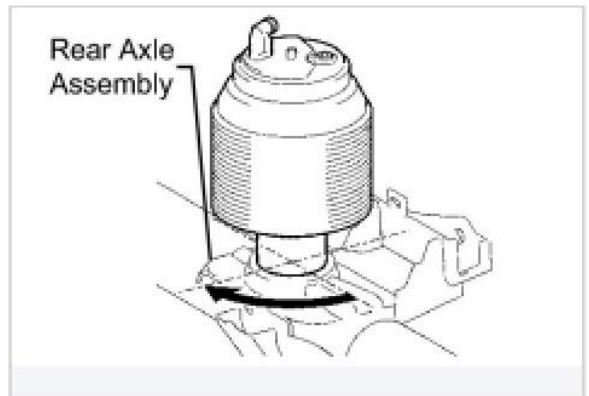
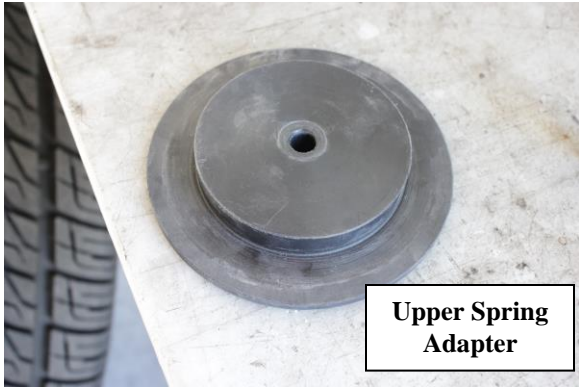


Photo 11



Photo 12

8. Lower the axle downward to remove some pressure from the air ride assembly, then, rotate the assembly 90 degrees to release the lower mount, then, remove the assembly and air lines as shown. (See Photos 11 & 12)



Upper Spring Adapter

Photo 13

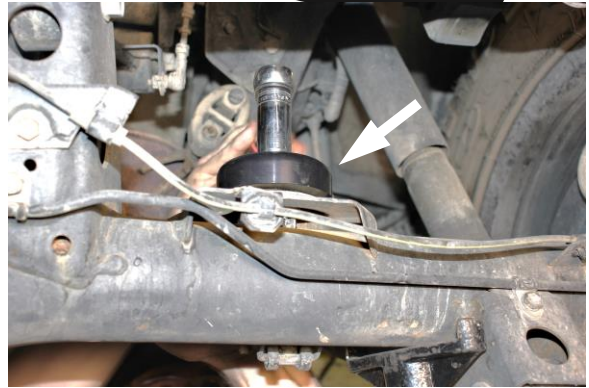


Photo 16

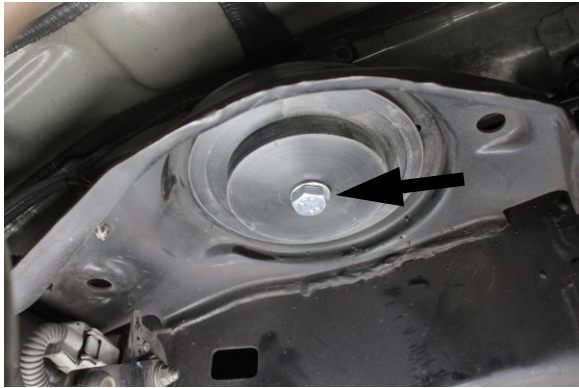


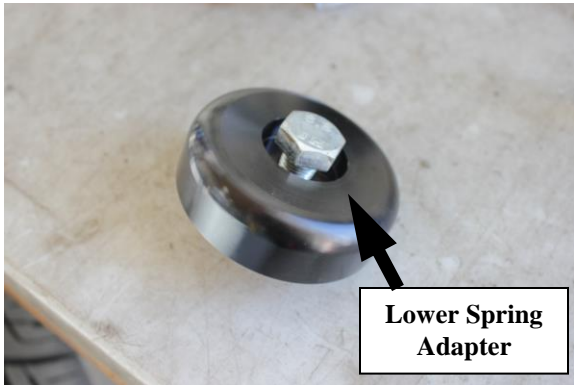
Photo 14



Photo 17

9. Install the upper spring mount adapter using the provided M12-1.75 x 30mm L hex screw and M12 washer and nylock nut as shown. (See Photos 13 & 14)

10. Secure the lower spring mount adapter to the axle using the provided M12-1.75 x 40mm L hex screw and M12 washer and nylock nut as shown. (See Photos 15, 16 & 17)



Lower Spring Adapter

Photo 15



Photo 18



Photo 19



Photo 20

11. Install the rear spring making sure the spring lines up with the upper and lower adapters, then, raise the suspension upwards as shown. (See Photos 18, 19 & 20)

12. Install your new extended length shocks.



Photo 21

13. Reconnect and secure the OE end links with the OE hardware. (See Photo 21)

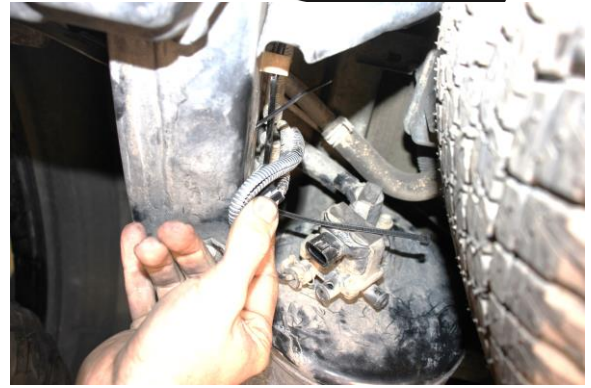


Photo 22

14. Secure the air compressor electrical connections with the provided zip ties. (See Photo 22)

15. Doublecheck to make sure everything is properly positioned and tightened.

16. Road test the vehicle and re-tighten if necessary

Installation Instructions

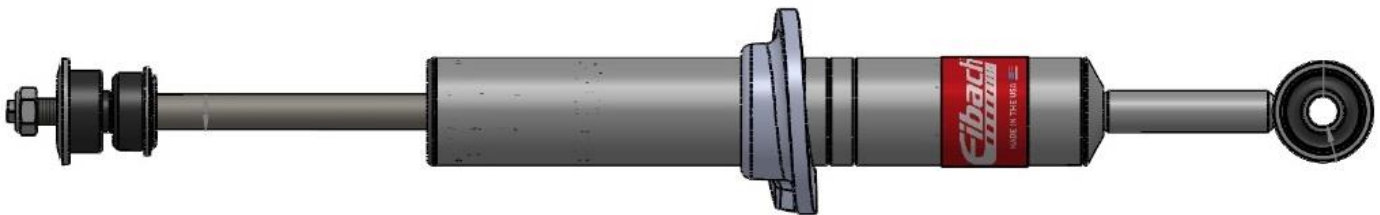
Eibach Springs, Inc. • 264 Mariah Circle • Corona, California 92879-1751 • USA • Tech Support 800-222-8811 Ext 114

***Pro-Truck Sport Leveling* – # E60-59-005-01-10**

Note: The average lift amounts shown on page 3 of this instruction sheet are based on using the OE springs. If using the Eibach Pro Lift springs, refer to the instructions that are specific to the Eibach Pro Lift springs.

Note: Eibach recommends replacing used snap rings with new snap rings when adjusting the ride height on your truck. We have included a spare snap ring for such occasions.

Contents	Description	Part Number	Qty
	Damper Assy.	82123.8003.1	1
	Bump Stop Cap Assy	8001108.0	1
	Upper Stem Bushing	84-1331	1
	Cupped Washer	84-1334	1
	Lower Stem Bushing	84-1332	1
	Lower Stem Washer	84-1335	1
	External Snap Ring	84-1804	1
	Bushing	8000909	1
	Nut, Nylock M12-1.25	H63025400	1
	Spring Perch	84-3005	1
	Installation Instructions	82123.8003INST	1
	Retaining Ring Kit, Spare	84-1804.0	1



NOTES: Read All Instructions Before Beginning Installation

1. Park vehicle on level surface and set emergency brake. Raise and support the vehicle with safety stands. Refer to factory manual for proper location of safety stands.
2. Power washing your chassis will make the installation cleaner.
 - **NOTE:** Never work on or under a vehicle unless it is properly supported by safety stands.
3. Loosen and remove the OE shock per the factory recommended removal procedure.
4. Installation of the Eibach Pro Damper shock should be done in the reverse order of removal.



Shock Instructions and Safety Tips

Installation

IMPORTANT NOTES:

- Any time you are working under a vehicle, be sure to use the proper jack stands and tire chocks to prevent any shifting or slipping of the car. Never use a jack only to support the vehicle while changing shocks.
- Inspect shock brackets or mounting points before installation to make sure they are not broken or bent.
- Do not attempt to disassemble these shocks. Return damaged shocks to EIBACH SPRINGS for any necessary service or repairs.

PLEASE READ THESE INSTRUCTIONS ENTIRELY BEFORE BEGINNING

- Proper installation is a must to realize the maximum performance improvements. Follow these steps carefully.

USE THE RIGHT SHOCK FOR YOUR VEHICLE

- Use EIBACH SPRINGS shocks only for the applications for which they are listed. Each shock is specifically tuned for that vehicle's weight, suspension geometry, and other characteristics.
- Compare original shock mounting style and hardware with your new shocks before starting installation. If original hardware is not reusable, it should be replaced with OEM quality and style hardware.
- Shocks are tuned to vehicle manufacturer's recommendation for tire pressure, not necessarily the max inflation pressure listed on sidewall of tire.

IMPORTANT INSTALLATION NOTES

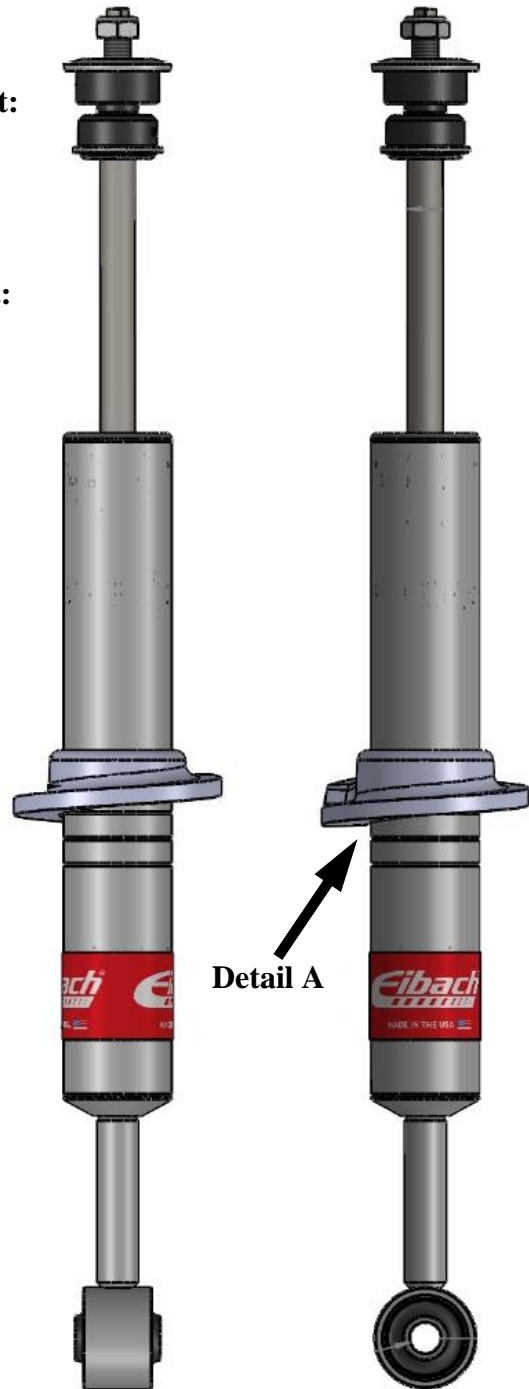
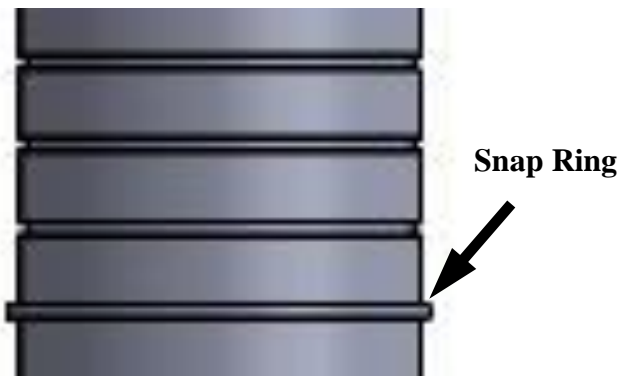
- If you are uncertain of proper shock installation procedure, please consult appropriate service manual. Torque all fasteners to vehicle manufacturer's specs. Note: On Post Mount shocks, finger tighten nut to achieve zero clearance between the retaining washers and the bushings, then continue to tighten approximately 5-6 turns to achieve proper pre-load. Bushings should be slightly bulged. Secure with Jam Nut. On some vehicles, nut may bottom out on stud before 5-6 turns, which is proper for those applications.
- OEM mounting hardware may be either standard or metric. Make sure you have the proper tools before starting. Do not interchange hardware. Use new mounting hardware provided with your shocks, and re-use original mounting hardware in all other locations.
- EIBACH SPRINGS shocks have a high-pressure nitrogen gas charge and may come with a restraining strap, which holds the shock in a compressed position. To ease most installations, leave the strap on until you have secured one end of the shock, then cut the strap and quickly guide the other end of the shock into position as it expands. Strap must be cut before some installations, such as when strap goes around post.
- Wire ties are provided to secure the shock boot to the shock body. On some installations (especially where the shock must pass through a hole in the lower control arm), it is necessary to put the wire tie on after the shock is installed.
- After installing shocks and before driving vehicle, check for clearance of exhaust, brake or gas lines, electrical wiring, etc.
- After installation, drive the vehicle cautiously for the first few miles to develop a feel for the improved handling and ride quality. After 10 miles, inspect installation, re-check torque on all fasteners, and verify adequate component clearance.

Note: If using the Eibach Pro Lift springs, refer to the instructions for the springs to determine the proper perch height. The average lift shown below is based on using the OE springs.



Important: Ensure that the Snap Ring is fully seated in the snap ring groove (you should be able to rotate it manually). Install the Spring Perch Adapter in the orientation shown, making sure the snap ring is fully seated into the groove on the bottom side of the spring perch adapter. **Note:** Improper installation will cause permanent damage to the shock.

Detail A

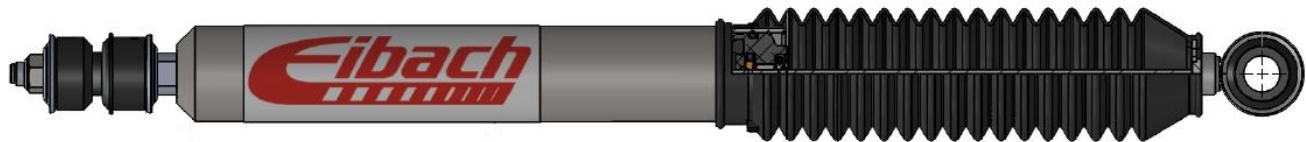


Installation Instructions

Eibach Springs, Inc. • 264 Mariah Circle • Corona, California 92879-1751 • USA • Tech Support 800-222-8811 Ext 114

Pro-Damper – # E60-82-008-02-01

Contents	Description	Part Number	Qty
	Damper Assy.	82112.8004.1	1
	Dust Boot	84-2015	1
	Cupped Washer	84-1339	2
	Bushing	84-1373	1
	Lower Stem Bushing	84-1532	1
	Upper Stem Bushing	84-1531	1
	Center Washer	84-1338	1
	Rod End Assy.	28-1672	1
	Nut, Nylock M12-1.25	H63025400	1
	Zip Tie	H70065500	1
	Information Kit	EPAK	1
	Installation Instructions	82112.8004INST	1



NOTES: Read All Instructions Before Beginning Installation

1. Park vehicle on level surface and set emergency brake. Raise and support the vehicle with safety stands. Refer to factory manual for proper location of safety stands.
2. Power washing your chassis will make the installation cleaner.
 - **NOTE:** Never work on or under a vehicle unless it is properly supported by safety stands.
3. Loosen and remove the OE shock per the factory recommended removal procedure.
4. Installation of the Eibach Pro Damper shock should be done in the reverse order of removal.



Shock Instructions and Safety Tips

Installation

IMPORTANT NOTES:

- Any time you are working under a vehicle, be sure to use the proper jack stands and tire chocks to prevent any shifting or slipping of the car. Never use a jack only to support the vehicle while changing shocks.
- Inspect shock brackets or mounting points before installation to make sure they are not broken or bent.
- Do not attempt to disassemble these shocks. Return damaged shocks to EIBACH SPRINGS for any necessary service or repairs.

PLEASE READ THESE INSTRUCTIONS ENTIRELY BEFORE BEGINNING

- Proper installation is a must to realize the maximum performance improvements. Follow these steps carefully.

USE THE RIGHT SHOCK FOR YOUR VEHICLE

- Use EIBACH SPRINGS shocks only for the applications for which they are listed. Each shock is specifically tuned for that vehicle's weight, suspension geometry, and other characteristics.
- Compare original shock mounting style and hardware with your new shocks before starting installation. If original hardware is not reusable, it should be replaced with OEM quality and style hardware.
- Shocks are tuned to vehicle manufacturer's recommendation for tire pressure, not necessarily the max inflation pressure listed on sidewall of tire.

IMPORTANT INSTALLATION NOTES

- If you are uncertain of proper shock installation procedure, please consult appropriate service manual. Torque all fasteners to vehicle manufacturer's specs. Note: On Post Mount shocks, finger tighten nut to achieve zero clearance between the retaining washers and the bushings, then continue to tighten approximately 5-6 turns to achieve proper pre-load. Bushings should be slightly bulged. Secure with Jam Nut. On some vehicles, nut may bottom out on stud before 5-6 turns, which is proper for those applications.
- OEM mounting hardware may be either standard or metric. Make sure you have the proper tools before starting. Do not interchange hardware. Use new mounting hardware provided with your shocks, and re-use original mounting hardware in all other locations.
- EIBACH SPRINGS shocks have a high-pressure nitrogen gas charge and may come with a restraining strap, which holds the shock in a compressed position. To ease most installations, leave the strap on until you have secured one end of the shock, then cut the strap and quickly guide the other end of the shock into position as it expands. Strap must be cut before some installations, such as when strap goes around post.
- Wire ties are provided to secure the shock boot to the shock body. On some installations (especially where the shock must pass through a hole in the lower control arm), it is necessary to put the wire tie on after the shock is installed.
- After installing shocks and before driving vehicle, check for clearance of exhaust, brake or gas lines, electrical wiring, etc.
- After installation, drive the vehicle cautiously for the first few miles to develop a feel for the improved handling and ride quality. After 10 miles, inspect installation, re-check torque on all fasteners, and verify adequate component clearance.

