

# FLOWMASTER™

## DELTA FORCE™

### SYSTEM # 17202

#### 1964-1967 GM "A" BODY

#### (3" SYSTEM)

#### Installation Instructions

3/2/06

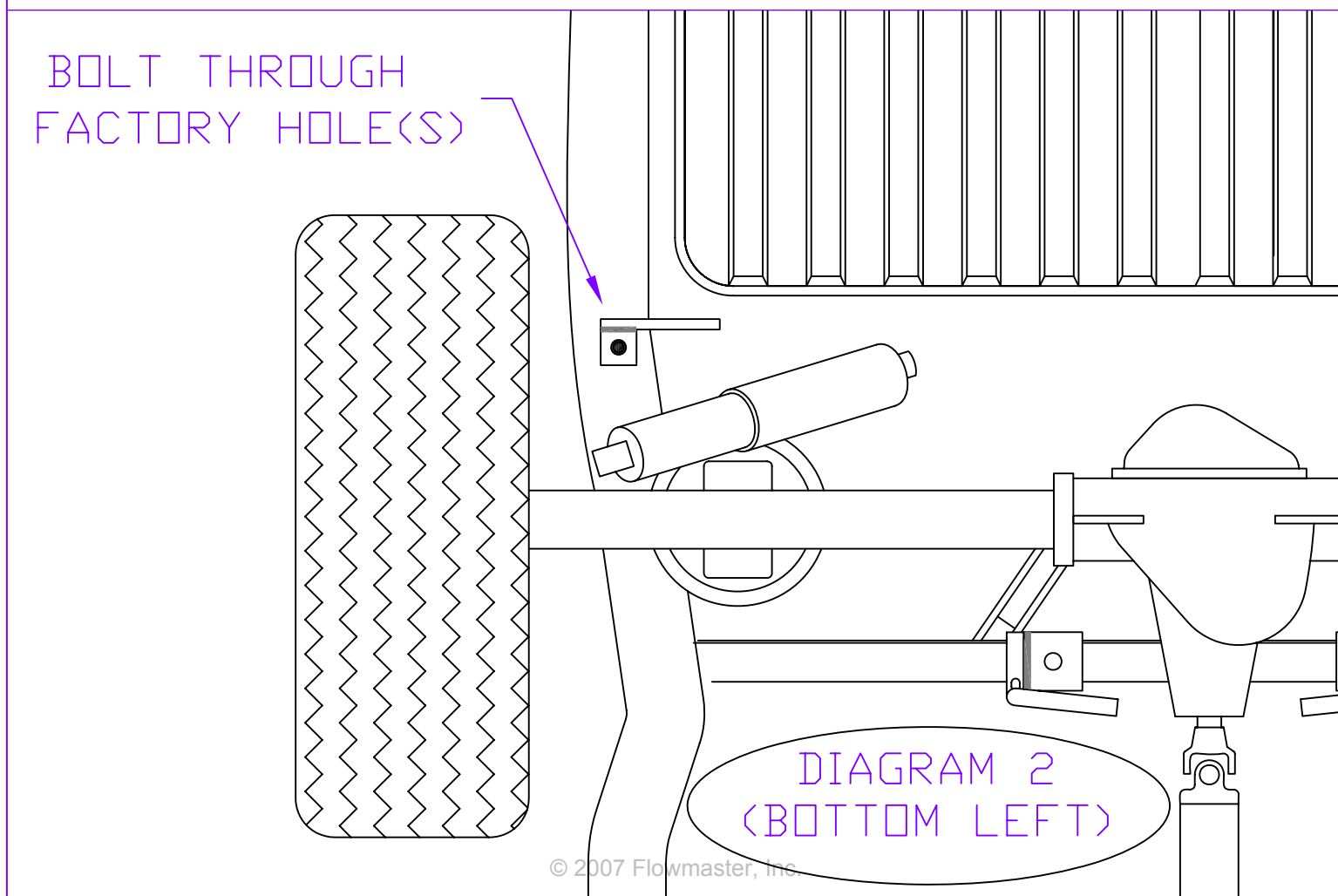
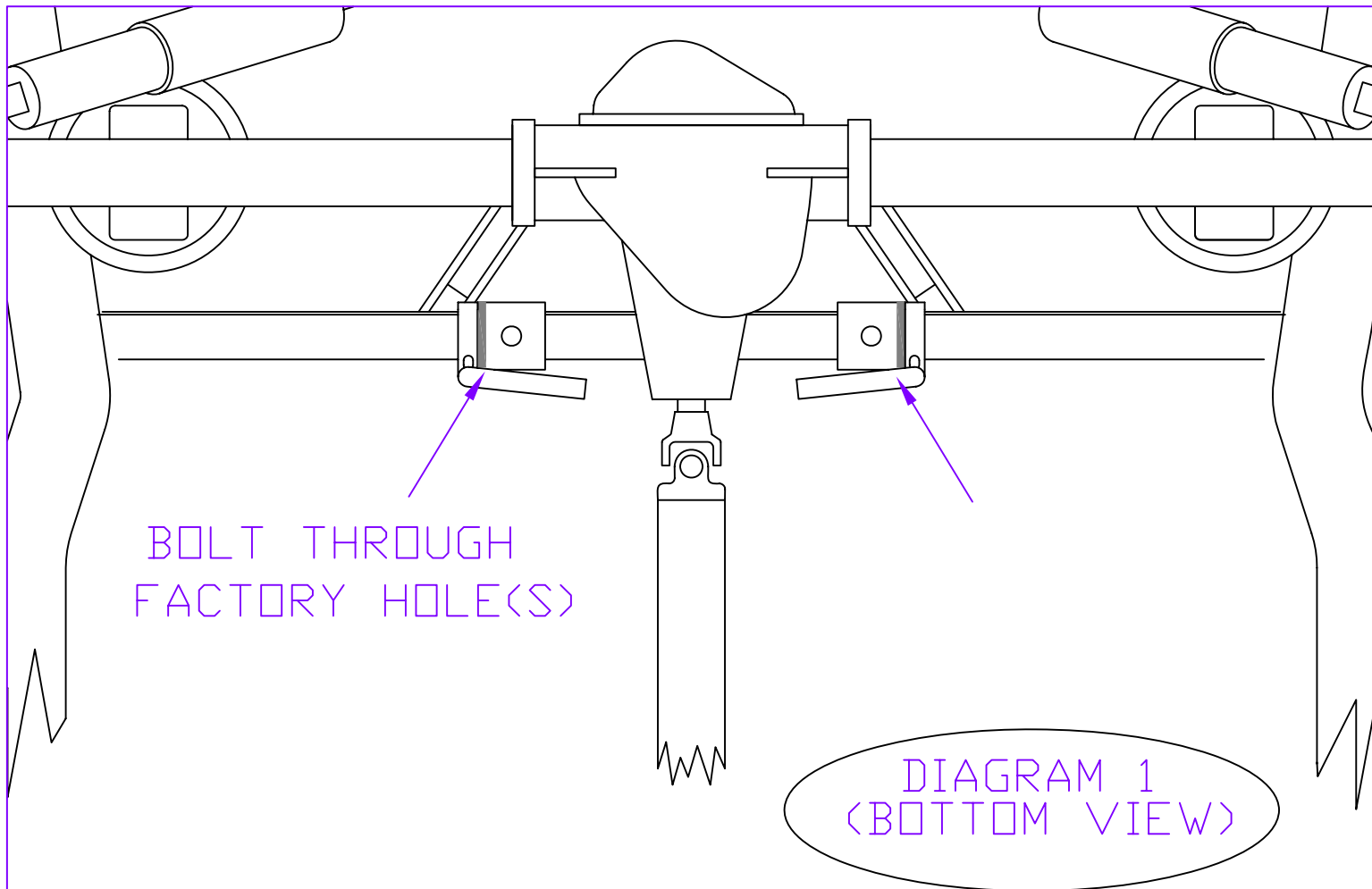
#### Installation:

- 1) On the rear control arm mount/crossmember frame section, slightly forward of the rear axle, there are a set of two mounting holes on each side of the vehicle (use the two inner holes) which will be used to mount the rear muffler hangers. Use these stock locations to mount hanger **#298HA** on the left side and hanger **#297HA** on the right. Use the 5/16" x 1" bolts and nuts provided. **See Diagram # 1**
- 2) On the main outer frame rails of the vehicle, slightly forward of the rear axle, there will be a single mounting hole on each side of the vehicle which will be used to mount the rear tailpipe hangers. Use these stock locations to mount hanger **#302HA** on the left side and hanger **#303HA** on the right. Use the 3/8" Thread cutting bolts provided. The holes may need to be drilled out to a 5/16" dia. **See Diagram # 2**
- 3) Slide the two rubber hanger's **#HA168** onto the hanger's above where the mufflers go. Then slide clamp hanger **#287HA** (right side) into bottom hole of rubber hanger **#HA168**. Install left side hanger **#288HA** same way. Then place the outlets of the mufflers into the clamp hangers.
- 4) Place H-pipe assembly **#26154** in its approximate position underneath the vehicle and connect the back of H-Pipes into the inlet of the mufflers **#953048** and support with a stand. Before connecting H-Pipe slide a 3" clamp **#MC300R** over muffler inlets, then connect to H-Pipe and tighten clamps enough to hold but allow for adjustment.
- 5) Place the right and left side front tailpipe sections **#26156** into outlet of mufflers and tighten the clamp hangers **#287HA & 288HA** just enough to hold, while still allowing for adjustment. Place rubber hangers on the two tailpipe clamp hangers **#300HA & 301HA**, then connect them to the frame mounts installed in step 2, and onto the back of the over axle pipe
- 6) Take the right rear section tailpipe **#26157** and slide it onto the back of the right front section tailpipe **#26156**. Then slide clamp hanger **#301HA** onto the back of right rear section tailpipe **#26157** and slide hanger rod into rubber hanger **#HA168** that you installed in step 2.
- 7) Take the left rear section tailpipe **#26158** and slide it onto the back of the left front section tailpipe **#26156**. Use a **#MC300R** ring clamp at this connection (**slide clamp on front section tailpipe before connecting to rear section on**) and tighten enough to hold, but allow for adjustments. Then slide clamp hanger **#300HA** onto the back of left rear section tailpipe **#26158** and slide hanger rod into rubber hanger **#HA168** that you installed in step 2.

- 8) The front connector pipes #26145 are long enough to allow for many different header combinations therefore, it is necessary to determine the proper length of the connector pipes. Once the proper length is determined, trim the front connector pipes to fit.
- 9) Once the connector pipes are cut to proper length, raise them into position and connect them to the H-Pipe and header collectors or manifold down pipes using a standard header flange or "Flowmaster" venture cone.
- 10) Adjust the position of the mufflers and all pipes to provide the proper fit.
- 11) Make any final adjustment to the position of the mufflers and pipes allow a minimum of 3/4" clearance around all parts. Then tighten down all clamps securely and install the 7/16" hanger keepers on the round stock sticking threw the rubber hangers provided in parts kit. Be sure to allow adequate clearance for full suspension travel and vibration.

**NOTE: WE STRONGLY RECOMMEND WELDING ALL SLIP-FIT CONNECTIONS.**

Packing List			
Qty.	Part # or Size	Part	
BOX 1 OF 2 (5032)			
2	953048	Muffler	
BOX 2 OF 2 (1033)			
2	26145	Connector Pipe, (R/L)	
1	26154	H- Pipe Assembly	
2	26156	Left/Right front section tailpipe	
1	26158	Left rear section tailpipe	
1	26157	Right rear section tailpipe	
1	PK415	Parts kit	
1	287HA	Clamp Hanger Muffler (R)	
1	288HA	Clamp Hanger Muffler (L)	
1	297HA	Muffler Hanger (R)	
1	298HA	Muffler Hanger (L)	
1	301HA	Clamp Hanger Tailpipe (R)	
1	300HA	Clamp Hanger Tailpipe (L)	
4	HA168	Rubber Hanger	
1	303HA	Frame Hanger Rear (R)	
1	302HA	Frame Hanger Rear (L)	
8	HW502	7/16" Hanger Keepers	
4	MC300R	3" Ring Clamps	
2	HW204	5/16"x 1" Bolt	
4	HW302	5/16" Flat Washer	
2	HW308	5/16" Lock Washer	
2	HW102	5/16" Nuts	
2	HW222	3/8" Cut Thread Hex Bolt	
2	HW303	3/8" Flat Washer	



# *FLOWMASTER DELTA FORCE KIT #17202* *1964-67 GM A-BODIES* *\*\*\*3" PIPES\*\*\**

