



Installation Instructions for:  
**SYSTEM #717792**  
**2017-2018 FORD F-150 RAPTOR**  
**3.5L V6 EcoBoost, 146" Wheelbase Only**

10/09/17

**Removal:**

1) Spray a penetrating lubricant onto the rubber hangers supporting the muffler and tailpipes, also the nuts at the clamped and flanged connections before and after the muffler. Then spray the slip-joints at the front and back of the muffler, this will greatly ease removal of the stock muffler.



2) Loosen the two clamps connecting the tailpipes to the muffler at the over-axle slip-fit connections. Then unbolt the forward hanger mount on each tailpipe from the frame. Leave the hanger mounts connected to the tailpipes.



3) Unbolt the rear hanger mount on each tailpipe from the frame, leave the hangers connected to the tailpipes. Carefully slide the tailpipes toward the rear to remove from the muffler. Lower from the vehicle and set aside.



- 4) Support the muffler with a stand and loosen the clamp on each of the two front inlet pipes using a 15mm socket wrench. Then slide the muffler toward the rear of the vehicle to disconnect the inlet pipes and hangers from the rubber mounts on the vehicle. Lower from the vehicle and set aside.



- 5) Support the resonator with a stand and loosen the clamp on the right inlet pipe and the two flange bolts on the left inlet pipe using a 15mm socket wrench. Then slide the resonator toward the rear of the vehicle to disconnect the inlet pipes. Lower from the vehicle and set aside.

### Installation:



- 1) Place the new Flowmaster X-Pipe **#26678M** up into position behind the factory front pipes, slide the right side slip connection into the clamp and continue until the flared left connections come together. Using the included 3/8" bolts, nuts and washers, secure the two flanges together. Leave both connections slightly loose for later adjustment if needed.





- 2) Place the factory band clamp from the rear of the resonator onto the left X-Pipe outlet as shown. Place the supplied 2 ¾" clamp onto the right outlet as shown.



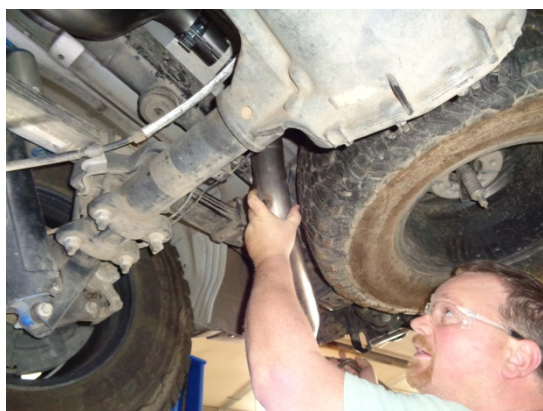
- 3) Place the inlet pipes of the new FlowFX muffler **#7430404-461**, into the back of the X-pipe and connect the hangers on the muffler to the rubber mounts on the vehicle. Be sure the muffler is full forward and seated. Support the muffler with a stand and tighten both clamps enough to hold but still allow for adjustment.



- 4) Place the new Flowmaster tailpipe assemblies next to the corresponding factory tailpipe. Swap both the front and rear hangers from the factory tailpipes to the new tailpipes.



- 5) Place the provided 3" clamps onto the muffler outlets.



- 6) Place the right tailpipe **#26677M** into position over the rear axle and into the right muffler outlet.



- 7) Remount the factory forward and rear tailpipe hangers to the frame and tighten securely. Repeat steps 6 and 7 with tailpipe **#26676M** on the left side of the vehicle.



8) Place the ST462B tips onto the end of the tailpipes and adjust to the desired position. Tighten the pinch bolt on the tips enough to hold in position. Check to see that the tip is centered in the bumper cut-out and that there is clearance to the trailer hitch.

9) Adjust the position of all pipes and muffler to provide a satisfactory fit. Be sure to maintain an adequate clearance around all parts of the system to avoid rattles or damage to heat sensitive components. Once you're happy with the fit, tighten all connections down securely. For a cleaner appearance and more secure installation, we highly recommend welding all slip-fit connections.

#### PACKING LIST

Qty.	Description	Part#
1	Scavenger X-Pipe	26678M
1	Muffler Assembly	7430404-461
1	Left Tailpipe Assembly	26676M
1	Right Tailpipe Assembly	26677M
2	Stainless Tips	ST462B
1	<b>Parts Kit</b>	<b>PK910</b>
1	2 3/4" Band clamp	MC234BS
2	3" Band Clamp	MC300BS
2	3/8" x 2 1/4" Bolt	HW221
4	3/8" Flat Washer	HW303
2	3/8" Lock Washer	HW309
2	3/8" Hex Nut	HW103





Installation diagram for:  
**SYSTEM #717792**  
2017-2018 Ford F-150 Raptor  
3.5L V6 Ecoboost, 146" Wheelbase Only

