



Installation Instructions
717857
2014-19* GM SILVERADO/SIERRA 1500
4.3L, 5.3L ENGINES
2/4 WD 143.5" & 153" WB
(1 PC DRIVESHAFT MODELS ONLY)
*2019 LEGACY BODY

OVERVIEW:

1. Please take a moment to read and understand these instructions before installing your Flowmaster performance system.

NOTE: Please inventory all parts before starting the installation process and call our tech line to report any missing parts. This will help avoid potentially stranding your vehicle until any missing replacement parts arrive.

PART NO.	DESCRIPTION	QTY.
26755M	Inlet Pipe	1
TB700M	Extension Pipe	1
71249-Z	Muffler	1
26756M	Tailpipe Assembly	1
ST509B	Tips	1
PK978	Hardware Pack includes:	1
MC300BS	3" Stainless Band Clamp	3
HW503	½" Hanger Keeper	4

REMOVE STOCK EXHAUST SYSTEM:

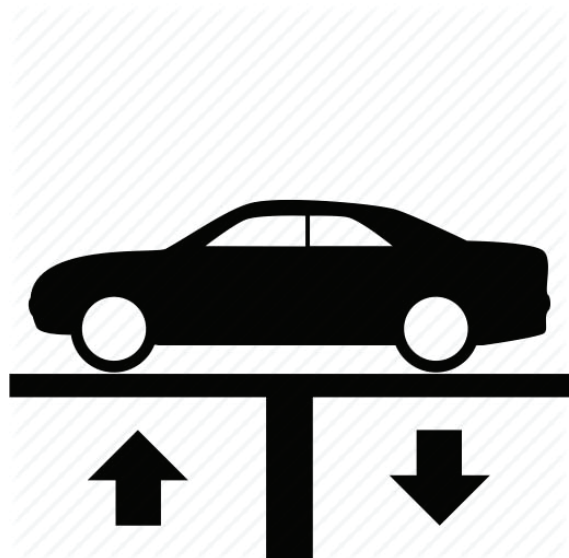
2. Raise vehicle up on a hoist or rack to working height. If you don't have access to a hoist or rack, support vehicle with jack stands.

WARNING:

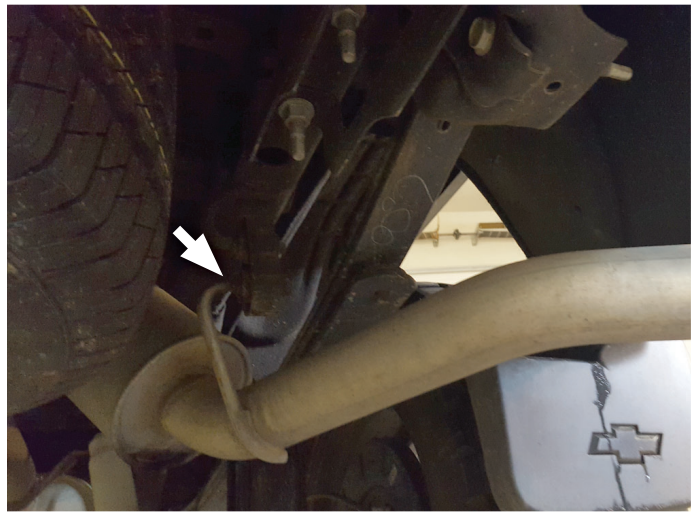
Avoid serious burns! Allow your vehicle time to cool completely before touching any factory engine components.

To ease disassembly of factory components:

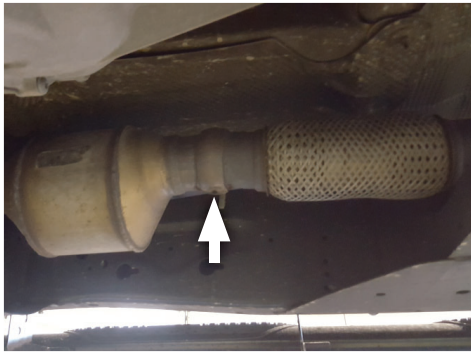
- Apply penetrating lubricant to mounts, bolts and clamps before you remove them.
- Use stands as necessary to support parts as you detach them from your vehicle.



3. Cut tailpipe just behind muffler, disassemble wire hangers (x3) from their isolators and remove tailpipe.



4. Loosen clamp, disconnect inlet pipe at catalytic converter then remove wire hanger from isolator to remove exhaust system completely from vehicle.



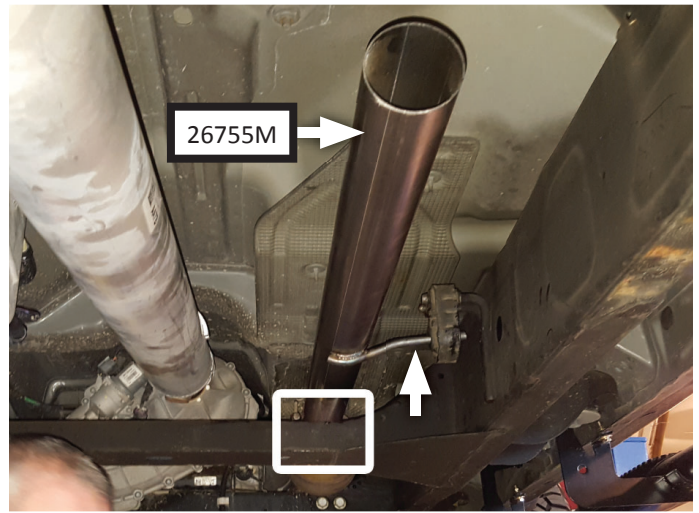
INSTALL FLOWMASTER EXHAUST SYSTEM

5. Remove nuts from stock and Flowmaster clamps, apply anti-seize compound to bolts and re-install nuts.

NOTE: The image in this step is intended for illustrative purposes only and may or may not accurately reflect components included in your kit.

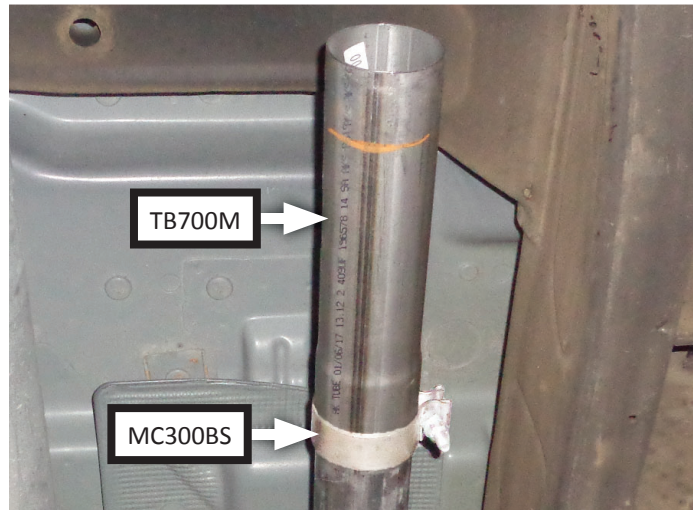


6. Transfer clamp from factory system onto **inlet pipe (26755M)** then connect it to catalytic converter. Mount wire hanger into factory isolator and tighten clamp just enough to allow for adjustment.

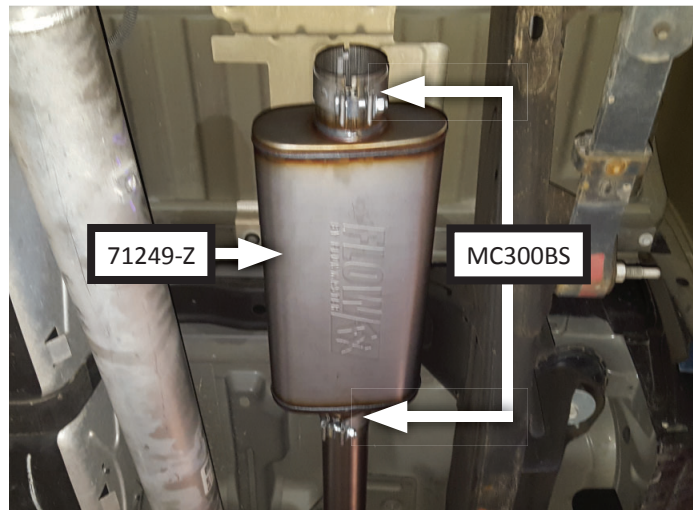


WHEEL BASE	BODY STYLE	BED LENGTH	INLET ASSY:
143½"	Extended Cab	6'6"	Don't install extension
143½"	Crew Cab	5'8"	Don't install extension
153"	Crew Cab	6'6"	Install extension

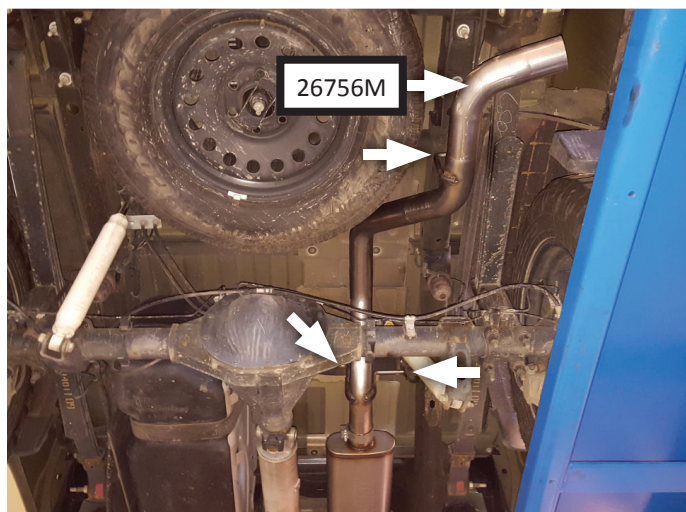
7. For applicable builds, place **clamp (MC300BS)** onto **extension pipe (TB700M)** then connect extension to inlet assembly.



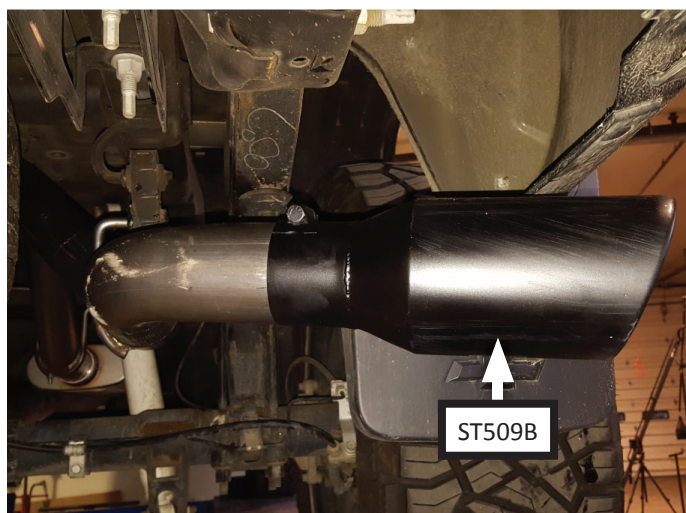
8. Place **clamps (x2) (MC300BS)** onto **muffler (71249-Z)** and connect it to inlet pipe. Tighten clamp just enough to allow for adjustment.



9. Route **tailpipe assembly (26756M)** over axle and connect it to muffler outlet. Mount wire hangers into isolators (x3) then tighten clamp enough to allow for adjustment.



10. Install **tip (ST509B)** onto tailpipe and tighten inlet.
11. Adjust exhaust components to provide a satisfactory fit. Maintain a minimum of ½" clearance around all components of the exhaust system, keeping in mind suspension, travel and vibration. After making any required adjustments, securely tighten the clamps.
12. Slide **hanger keepers (x4) (HW503)** onto the end of each hanger to prevent components from slipping out of their rubber mounts.
13. We recommend applying a one inch tack weld to all slip-fit connections for a more secure installation. You may also apply high temperature paint over welded areas to prevent rust and premature corrosion.



Congratulations, the installation of your FLOWMASTER performance exhaust system is now complete!





Installation Diagram
717857
2014-19* GM SILVERADO/SIERRA 1500
4.3L, 5.3L ENGINES
2/4 WD 143.5" & 153" WB
(1 PC DRIVESHAFT MODELS ONLY)
*2019 LEGACY BODY

