



Installation Instructions for  
**717880**  
CAT-BACK FFX SOR  
FITS: 1997-1999 WRANGLER TJ  
WITH 2.5L/4.0L ENGINES

**OVERVIEW:**

1. Please take a moment to read and understand these instructions before installing your Flowmaster performance system.

NOTE: Please inventory all parts before starting the installation process and call our tech line to report any missing parts. This will help avoid potentially stranding your vehicle until any missing replacement parts arrive.

PART NO.	DESCRIPTION	QTY.
71416-530	Muffler	1
86555M	Tailpipe	1
PK983	Hardware Pack includes:	1
MC225BS	2¼" Band Clamp	1
MC250BS	2½" Band Clamp	1
HW502	⅞" Hanger Keeper	2

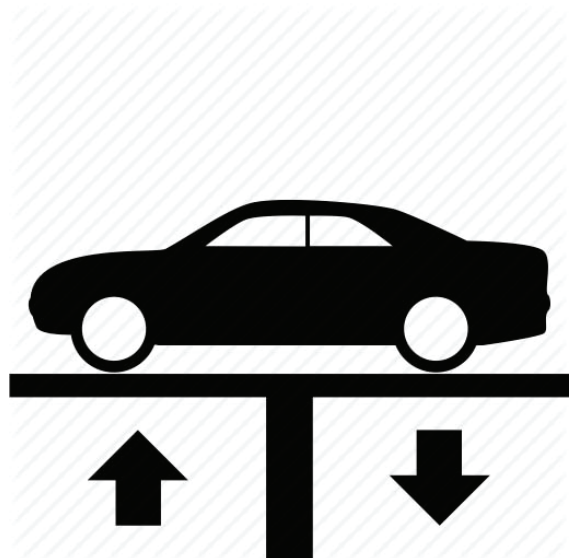
**REMOVE STOCK EXHAUST SYSTEM:**

2. Raise vehicle up on a hoist or rack to working height. If you don't have access to a hoist or rack, support vehicle with jack stands.

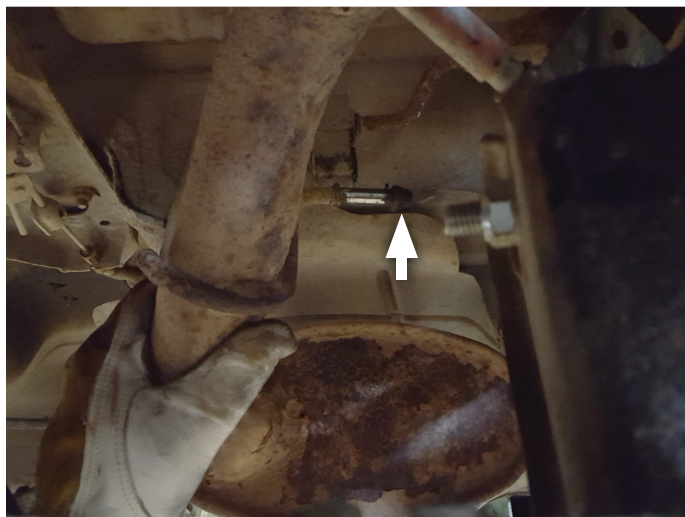
**WARNING:**  
Avoid serious burns! Allow your vehicle time to cool completely before touching any factory engine components.

**To ease disassembly of factory components:**

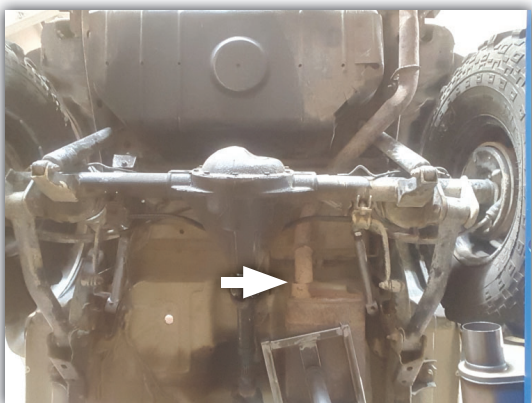
- Apply penetrating lubricant to mounts, bolts and clamps before you remove them.
- Use stands as necessary to support parts as you detach them from your vehicle.



3. Dismount factory tailpipe wire hangers (x2) from isolators.



4. Cut tailpipe just behind factory muffler then remove completely from vehicle.



5. Remove clamp and disassemble muffler from catalytic converter then remove muffler from vehicle.



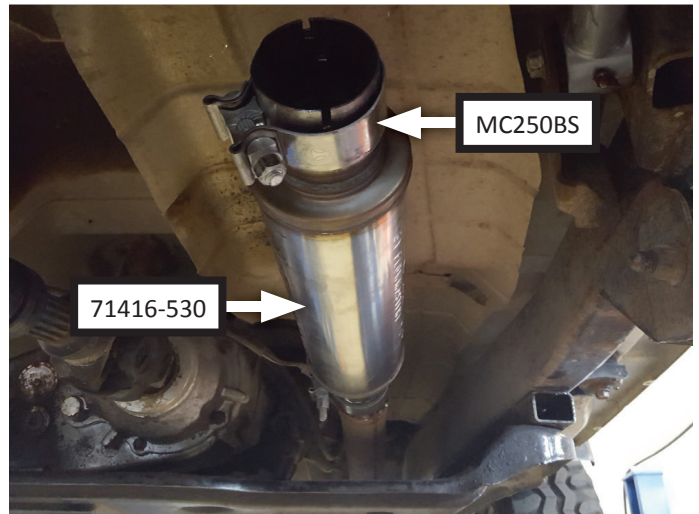
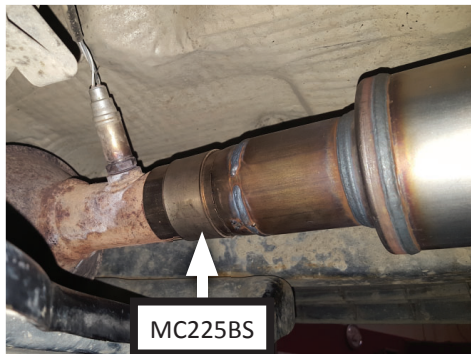
## INSTALL FLOWMASTER EXHAUST SYSTEM

- Remove nuts from stock and Flowmaster clamps, apply anti-seize compound to bolts and re-install nuts.

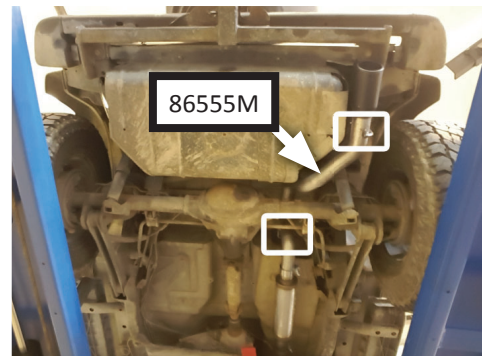
**NOTE:** The image in this step is intended for illustrative purposes only and may or may not accurately reflect components included in your kit.



- Place **2 1/4" clamp (MC225BS)** onto inlet and **2 1/2" clamp (MC250BS)** onto outlet of **muffler (71416-530)** then connect it to factory exhaust outlet. Tighten front clamp just enough to allow for adjustment.



- Route **tailpipe (86555M)** over rear axle then connect it to muffler. Insert wire hangers (x2) into factory isolators then tighten clamp just enough to allow for adjustment.



9. Adjust exhaust components to provide a satisfactory fit. Maintain a minimum of 1/2" clearance around all components of exhaust system, keeping in mind suspension, travel and vibration. After making any required adjustments, securely tighten the clamps.
10. Slide **7/16" hanger keepers (x2) (HW502)** onto the end of each hanger to prevent components from slipping out of their rubber mounts.
11. We recommend applying a one inch tack weld to all slip-fit connections for a more secure installation. You may also apply high temperature paint over welded areas to prevent rust and premature corrosion.



Congratulations, the installation of your FLOWMASTER performance exhaust system is now complete!



NOTE: Flowmaster maintains a highly trained technical service department to answer your technical questions, provide additional product information and offer various recommendations.





Installation Diagram for  
**717880**  
CAT-BACK FFX SOR  
FITS: 1997-1999 WRANGLER TJ  
WITH 2.5L/4.0L ENGINES

