



Installation Instructions
717992
2016-22 CHEVROLET CAMARO
3.6L ENGINE

OVERVIEW:

1. Take a moment to read and understand these instructions before installing your Flowmaster performance system.

NOTE: Please inventory all parts now before continuing and if necessary, report any missing items to our tech line. This will avoid potentially stranding your vehicle until any missing replacement parts arrive.

| ITM # | PART # | DESCRIPTION | QTY. |
|-------|-----------|----------------------------|------|
| 1 | 70001-587 | Right Muffler Assembly | 1 |
| 2 | 70001-588 | Left Muffler Assembly | 1 |
| N/A | PK822 | Hardware Package includes: | 1 |
| 3 | MC225BS | 2¼" Stainless Band Clamp | 2 |
| 4 | HW502 | 7/16" Hanger Keeper | 2 |

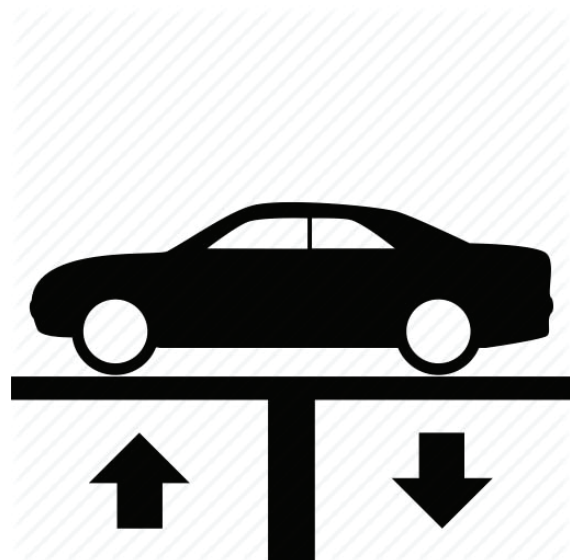
REMOVE STOCK EXHAUST SYSTEM:

2. Raise vehicle up on a hoist or rack to working height. If you don't have access to a hoist or rack, support vehicle with jack stands.

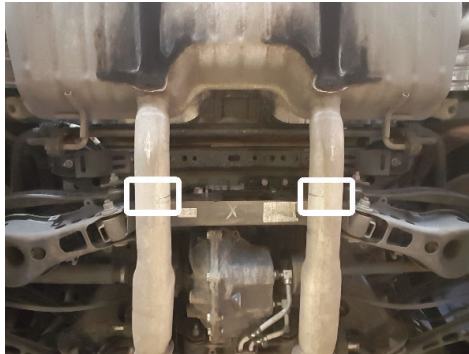
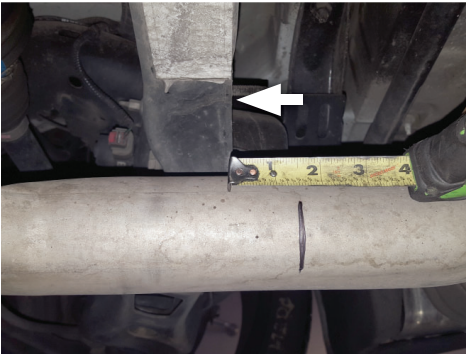
WARNING:
Avoid serious burns! Allow your vehicle time to cool completely before touching any factory engine components.

To ease preparation and installation of your new kit:

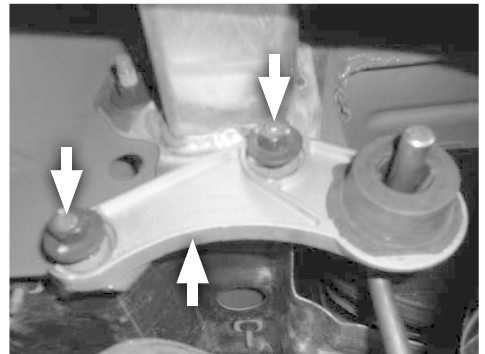
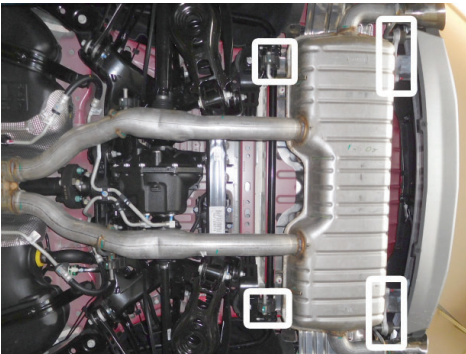
- Apply penetrating lubricant to mounts, bolts and clamps before you remove them.
- Use stands as necessary to support parts as you detach them from your vehicle and again as you install new parts.



3. Mark tailpipes 1½" back from rear of suspension cross-member. Cut pipes at each mark, then deburr.



4. Dismount both front wire hangers, remove nuts (x4) and muffler/pipe hangers (x2) from muffler rear then disassemble and set aside muffler from vehicle. Retain nuts and muffler/pipe hangers for later use.



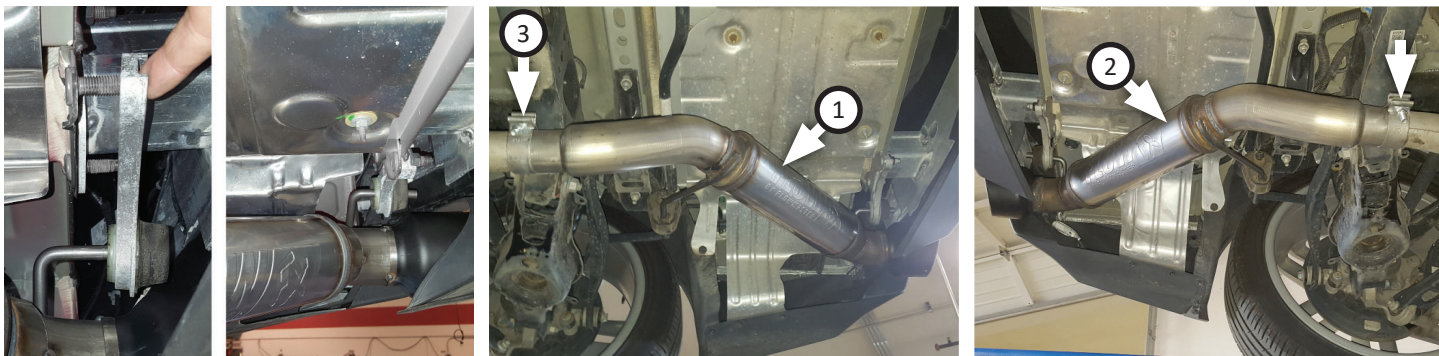
INSTALL FLOWMASTER EXHAUST SYSTEM:

5. Remove nuts from stock and Flowmaster clamps, apply anti-seize compound to bolts and re-install nuts.

NOTE: The image in this step is intended for illustrative purposes only and may or may not accurately reflect components included in your kit.



- Place (x2) **clamps (3)** onto **left (2)** and **right (1)** mufflers then connect them to exhaust and insert wire hangers (x2) into isolators. Secure muffler ends with nuts and muffler/pipe hangers (removed step 4).



- Adjust and level mufflers maintaining $\frac{1}{2}$ " clearance around them, then tighten all clamps.
- Slide (x2) $\frac{3}{16}$ " **hanger keepers (4)** onto each sideways hanger to secure exhaust system.
- Recommended:** Secure slip-fit connections with a 1-inch tack weld then spray high-temp paint over each weld to prevent rust and premature corrosion.



Congratulations, the installation of your FLOWMASTER performance exhaust system is now complete!





Installation Diagram
717992
2016-22 CHEVROLET CAMARO
3.6L ENGINE

