



Installation Instructions for

817891

**CAT-BACK AMT DOR
2019 GM SILVERADO/SIERRA 1500
CREW CAB 4WD & DOUBLE CAB
2WD/4WD W/DUAL EXHAUST
WITH 6.2L ENGINES ONLY**

OVERVIEW:

1. Please take a moment to read and understand these instructions before installing your Flowmaster performance system.

NOTE: Please inventory all parts before starting the installation process and call our tech line to report any missing parts. This will help avoid potentially stranding your vehicle until any missing replacement parts arrive.

PART NO.	DESCRIPTION	QTY.
36066S	Inlet Pipe	1
36065S	Extension Pipe	1
8535562-Z	AMT Muffler	1
86559S	Right Front Tailpipe	1
86560S	Left Front Tailpipe	1
86561S	Right Rear Tailpipe	1
86562S	Left Rear Tailpipe	1
PK986	Hardware Pack includes:	1
MC350BS	3½" Band Clamp	2
MC250BS	2½" Band Clamp	4
HW503	½" Hanger Keeper	5

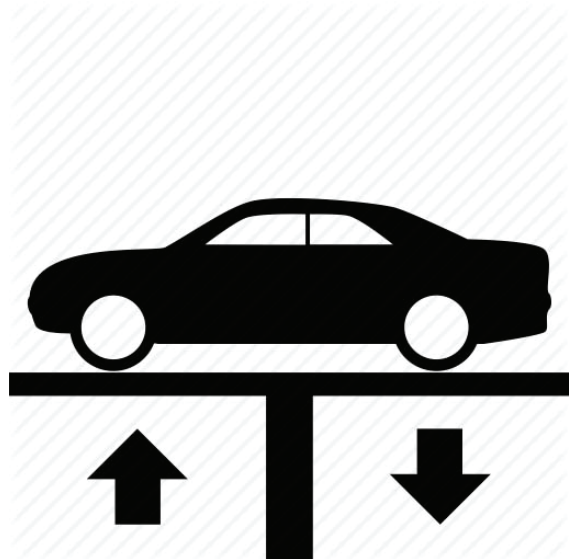
REMOVE STOCK EXHAUST SYSTEM:

2. Raise vehicle up on a hoist or rack to working height. If you don't have access to a hoist or rack, support vehicle with jack stands.

WARNING:
Avoid serious burns! Allow your vehicle time to cool completely before touching any factory engine components.

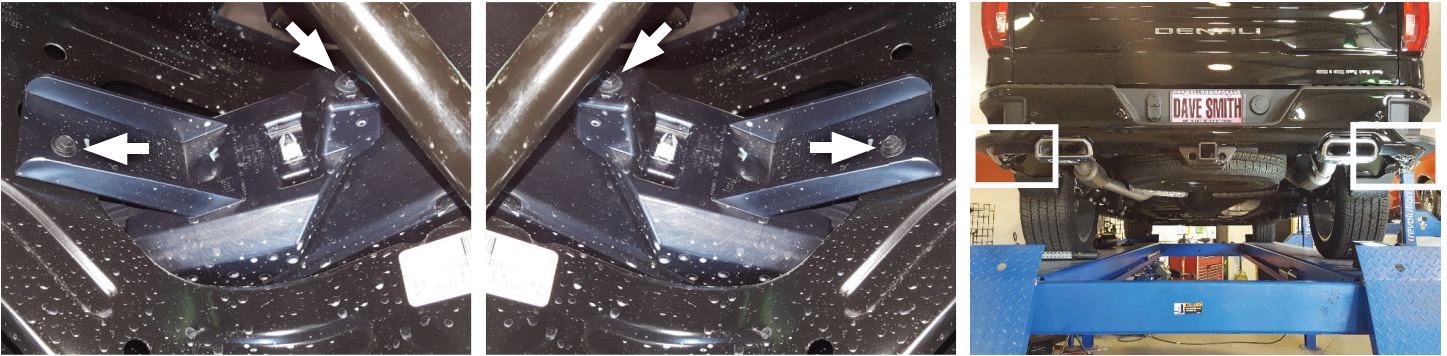
To ease disassembly and assembly of factory components:

- Apply penetrating lubricant to mounts, bolts and clamps before you remove them.
- Use stands as necessary to support parts as you detach and install them on your vehicle.

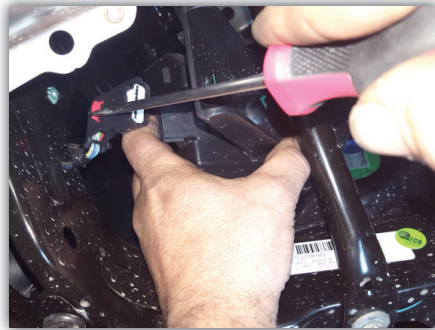


NOTE: Follow steps 3-4 only if your vehicle includes a back-up sensor option. Otherwise, proceed to step 5.

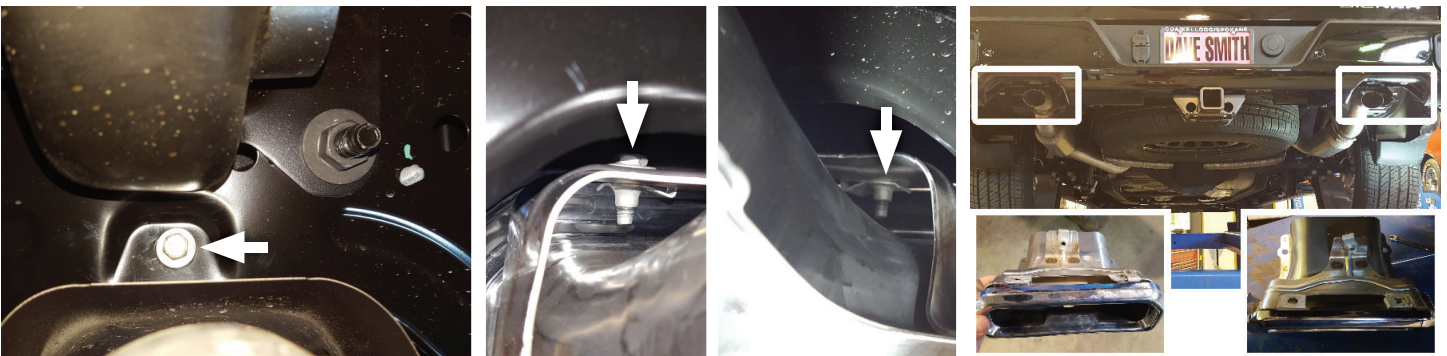
3. For ease of access, remove screws (x4) through driver and passenger side back-up sensor brackets (located inside corners of rear bumper). Retain them for later.



4. Unplug passenger and driver side sensor wiring then remove brackets from vehicle. Retain them for later use.



5. Remove screws (x3) securing passenger side bezel. Complete this step for the driver side as well.



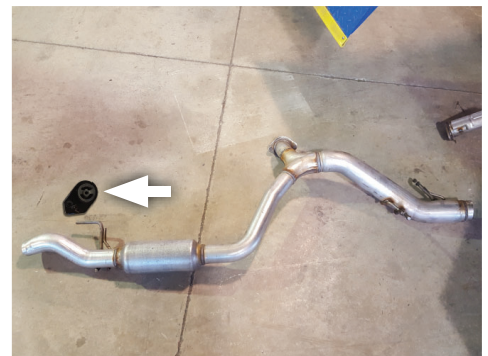
6. Remove nuts (x2) from driver side tailpipe flange. Then remove isolator and bolt from frame and disassemble tailpipe from vehicle. Retain isolator and bolt for later use.



7. Remove passenger side tailpipe isolater from frame. Then cut remaining tailpipe assembly just behind muffler exit.



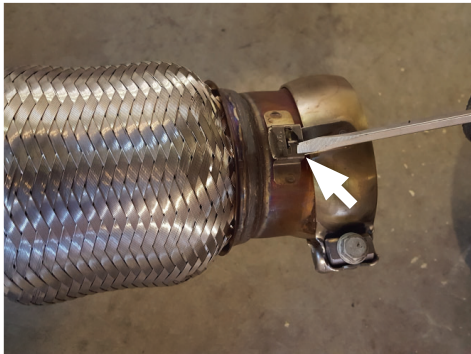
8. Disassemble tailpipe wire hangers from rear isolators then remove remaining tailpipe from vehicle. Retain isolater and bolt for later use.



9. Disassemble inlet pipe wire hanger from isolater.
Loosen factory clamp at catalytic converter and remove remaining muffler assembly from vehicle.



10. Release tab and remove clamp from muffler assembly.
Retain for later use.



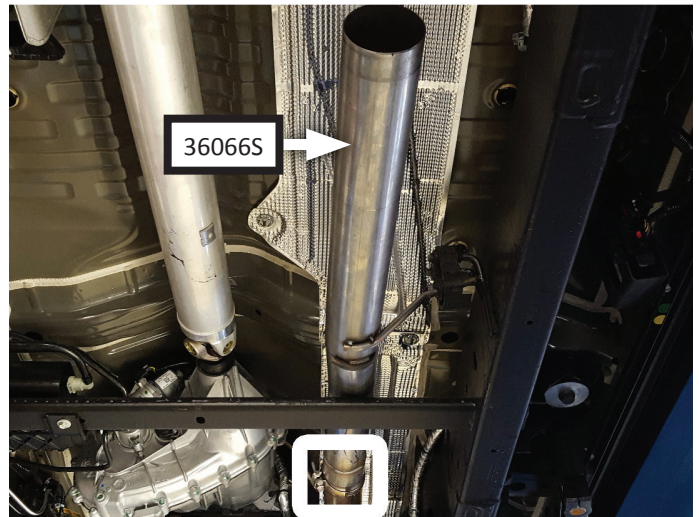
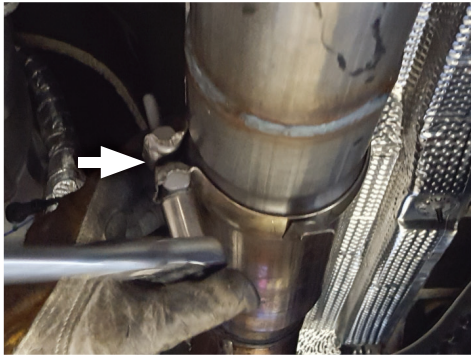
11. Remove nuts from stock and Flowmaster clamps, apply anti-seize compound to bolts and re-install nuts.

NOTE: The image in this step is intended for illustrative purposes only and may or may not accurately reflect components included in your kit.



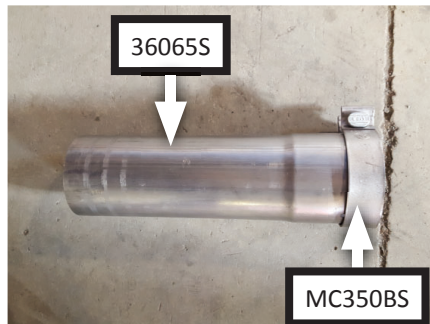
INSTALL FLOWMASTER EXHAUST SYSTEM

12. Place clamp (removed step 10) onto **inlet pipe (36066S)**. Connect inlet pipe to catalytic converter and mount wire hanger into factory isolator. Tighten clamp just enough to allow for adjustment.

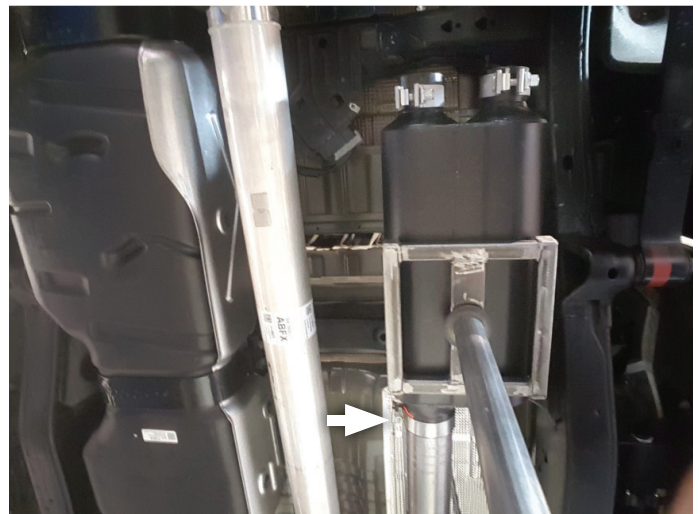
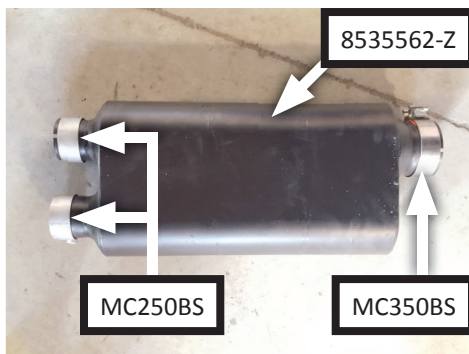


13. Place clamp (**MC350BS**) onto **extension pipe (36065S)** inlet then connect extension to inlet pipe.

NOTE: Complete this step **ONLY** if your vehicle is a Crew Cab truck with a 6'5" bed. This extension pipe will not be used on Double Cab or Crew Cab-5.5' bed models.



14. Place clamp (**MC350BS**) onto **muffler (8535562-Z)** inlet. Place **clamps (x2) (MC250BS)** onto muffler outlets. Connect muffler to inlet or extension pipe then tighten front clamp just enough to allow for adjustment.



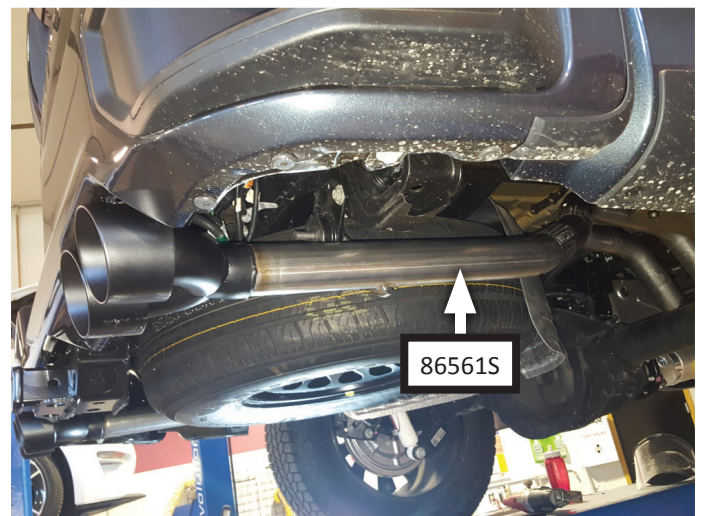
15. Route **right front tailpipe (86559S)** and **left front tailpipe (86560S)** over axle and connect them to muffler outlets. Mount wire hangers into isolators then tighten clamps (x2) enough to allow for adjustment.



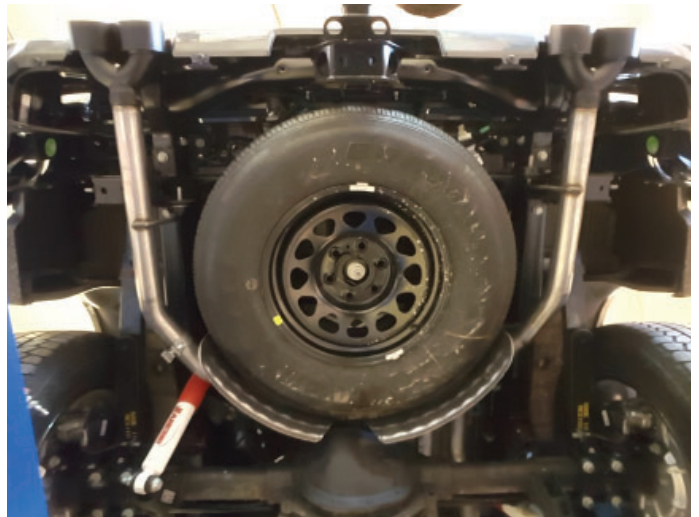
16. Place **clamp (MC250BS)** and isolator (removed step 6) onto **left rear tailpipe (86562S)** then connect it to left front tailpipe. Fasten isolator with bolt then tighten clamp enough to allow for adjustment.



17. Place **clamp (MC250BS)** and isolator (removed step 8) onto **right rear tailpipe (86561S)** then connect it to right front tailpipe. Fasten isolator with bolt then tighten clamp enough to allow for adjustment.



18. For applicable vehicles, re-install back up sensor brackets and screws (removed steps 3-4) then plug in sensor wiring.
19. Adjust exhaust components to provide a satisfactory fit. Maintain a minimum of 1/2" clearance around all components of the exhaust system, keeping in mind suspension, travel and vibration. After making any required adjustments, securely tighten all clamps.
20. Slide **hanger keepers (x5) (HW503)** onto the end of each hanger to prevent components from slipping out of their rubber mounts.
21. We recommend applying a one inch tack weld to all slip-fit connections for a more secure installation. You may also apply high temperature paint over welded areas to prevent rust and premature corrosion.



Congratulations, the installation of your FLOWMASTER performance exhaust system is now complete!



NOTE: Flowmaster maintains a highly trained technical service department to answer your technical questions, provide additional product information and offer various recommendations.

Technical Service: (707) 544-4761
Monday – Friday: 7:30 am to 5:00 pm Pacific Time
(Closed Saturday and Sunday)





Installation Diagram for

817891

**CAT-BACK AMT DOR
2019 GM SILVERADO/SIERRA 1500
CREW CAB 4WD & DOUBLE CAB
2WD/4WD W/DUAL EXHAUST
WITH 6.2L ENGINES ONLY**

