

20764 20764B 08-12 NISSAN SENTRA



20764 20764B 08-12 NISSAN SENTRA

08-12 NISSAN SENTRA

Billet Grille Install time: 30 Mins.

TOOLS REQUIRED:

Flat Screwdriver
3/16 Drillbit & Drill

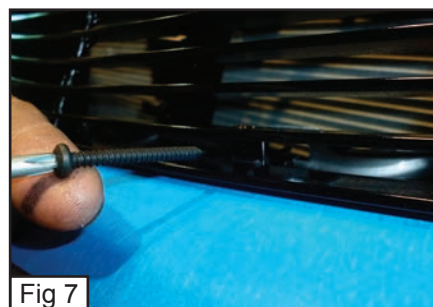
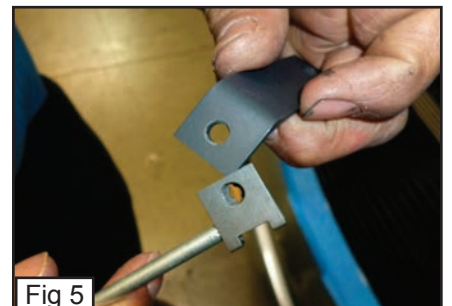
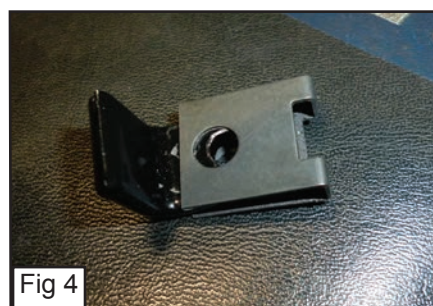
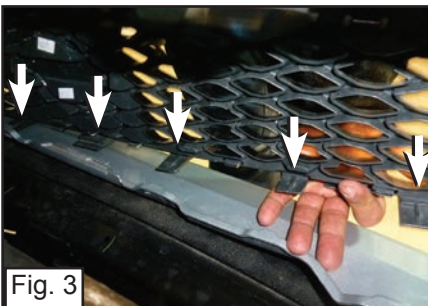
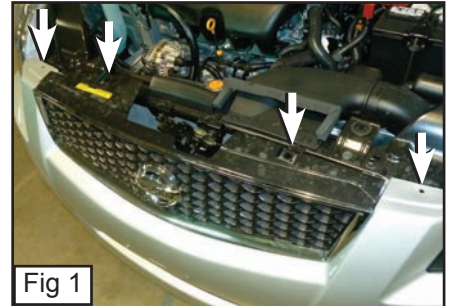
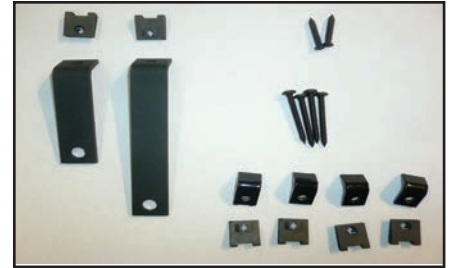
PARTS LIST:

(1) Billet Grille	(2) #8 1" Screws
(6) U-Nuts	(1) 3 1/4" Bracket
(4) L-Brackets	(1) 4 13/16" Bracket
(4) #8 1 1/2" Screws	

PLEASE READ AND UNDERSTAND ALL INSTRUCTIONS BEFORE ATTEMPTING INSTALLATION.

Step 1

- Remove 4 Clips from across the Factory Grille Shell. (Fig. 1)
- Behind the Grille, Remove a Clip that is on the Top Edge of the Factory Shell. (Fig. 2)
- Unclip 6 Clips from around the Lower Factory Grille and Remove Grille. (Fig. 3)
- Place the U-Nut Where the Hole on the L-Bracket is. (Fig. 4)
- Repeat for the 2 Custom Brackets. (Fig. 5)
- Place the Billet Grille Through the Factory Grille Opening. (Fig. 6)
- Place the #8 1 1/2" Screws through the Brackets that are along the Bottom of the Billet Grille. (Fig. 7)
- From Behind the Grille, Place L-Brackets on the Screws you just Placed. (Fig. 8)



**20764
20764B
08-12 NISSAN
SENTRA**



**20764
20764B
08-12 NISSAN
SENTRA**

08-12 NISSAN SENTRA
Billet Grille

- Place the 1" Screw through the Top Bracket on the Billet Grille to Thread the Longer Custom Bracket. (Fig. 9)
Repeat for other Custom Bracket
- Place back the Factory Clip onto the Custom Bracket. (Fig. 10)

INSTALLATION COMPLETE

