

51561/54561

51561/54561

**05-07 FORD
SUPER DUTY**



**05-07 FORD
SUPER DUTY**

2005-2007 FORD SUPER DUTY & EXCURSION **UPPER CLASS SERIES MESH GRILLE**

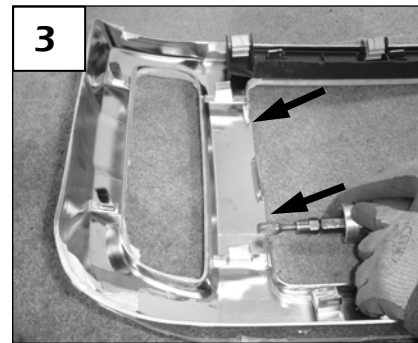
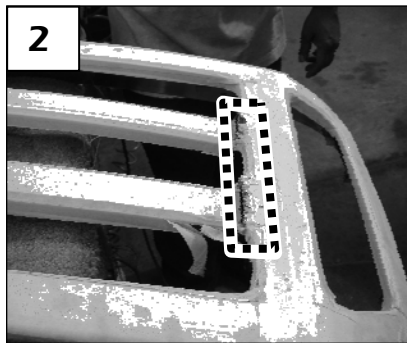
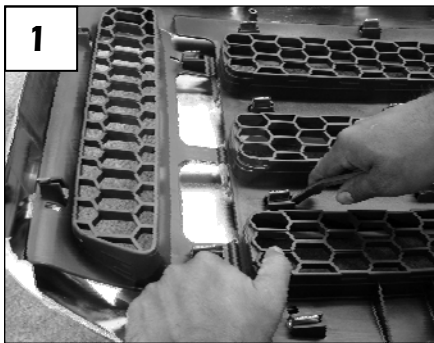
TOOLS REQUIRED:

Phillips / Slotted Screwdrivers
10mm, 5/16" Sockets
Vise Grip Pliers
Die Grinder or Jig-Saw
File / Sanding Disc

PARTS LIST:

1	Mesh Grille (Center)	1	1" x 1/4" Fender Washer
2	Mesh Inserts (Side)	4	135° Flange Brackets
12	10-32 Nylon Lock Nuts	4	1.5" J Hooks
12	#10 Flat Washers	4	#6 x 1/2" Sheet Metal Screws

Read and understand instructions before attempting installation



Step 1

Remove the screws on top of the grille. Now depress the clips on the bottom and remove the grille from the vehicle. Access the lower clips by gently pulling the grille forward; then use a large slotted screwdriver to depress the clips. Remove the grille from the vehicle. Apply masking tape to the face of the grille.

Step 2

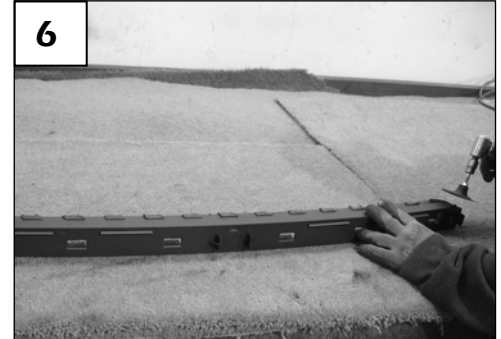
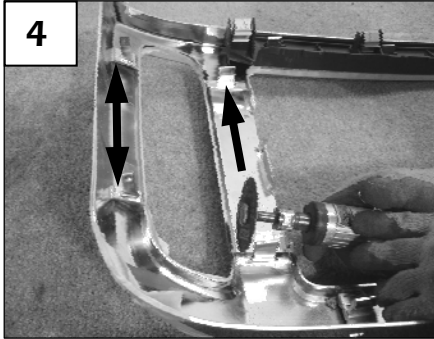
Remove the factory mesh insert behind the chrome shell (1); use a slotted screwdriver to depress molded clips securing the insert. Do not damage the plastic mounting tabs along the bottom. Remove the single 10mm nut securing the Ford logo in place. Depress the two molded clips retaining the logo; remove the logo. Use a jig-saw or die grinder to cut the center crossbars from chrome grille (2). Make your cut approximately 1/8"-1/4" inside each end of the center opening.

Step 3

Test fit the center grille; trim an additional 1/4" off the plastic edge near the mounting studs (3). The outer frame overlaps the edge to hide your cuts (do not cut beyond the mesh grille frame).

54561

54561

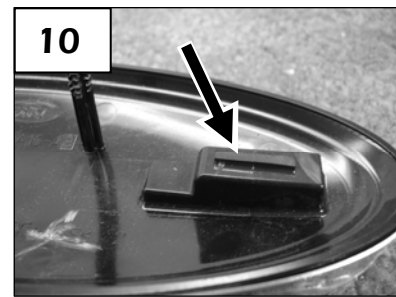
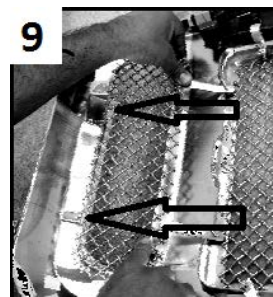
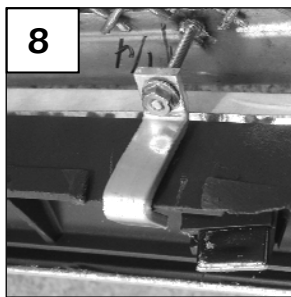
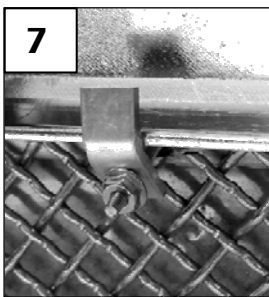


Step 4

Trim four mounting tabs on each end of the grille (4); do not cut into the face of the grille.

Step 5

The lower section on the factory mesh insert is re-used. This portion contains the metal clips to secure the grille to core support. Use a jig-saw or die grinder to cut these sections from the insert (5 & 6); Make your cuts at the base of the honeycomb (where it meets the solid plastic portion). Re-install.



Step 6

Position the center mesh grille in front of the grille opening. Install the 135' flange brackets along the top (7); install the J hook brackets along the bottom (8). Use the washers and nuts to secure each stud.

Step 7

The side inserts attach to the mounting studs on each end of the grille (9). Test fit the inserts; if necessary, bend the brackets for optimum fit. Use the nuts and washers to secure the inserts. Use the sheet metal screws to drill into the plastic and hold down the mesh.

Step 8

Optional; the Ford logo and mounting plate can be removed if desired. For installation, trim the thin area on the two mounting tabs; leave 1/16" (10) material to center the logo onto the plate. Loosen the mounting plate hardware; center the logo upright. From back, install provided fender washer, then OE retaining nut. Re-tighten mounting plate hardware. Re-install the grille assembly onto the vehicle. ***Thank you for purchasing a T-Rex Billet Grille. 4/28/14***

