

# **T-REX**

## **Billet Grilles**

54989

07-08 AUDI

Q7 SUV

54989

07-08 AUDI

Q7 SUV

### **2007-08 AUDI Q7 SUV**

#### **UPPER CLASS MESH GRILLE - 2 PC KIT**

#### **Tools Required:**

Phillips / Slotted Screwdrivers  
Torx Set  
5/16" Socket  
Jig-Saw / File  
Epoxy (Plastic - Metal)

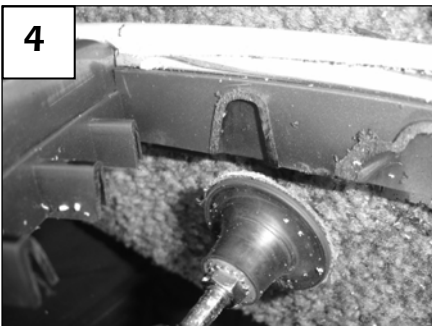
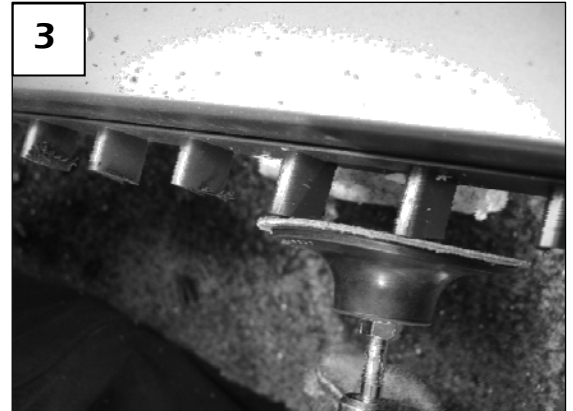
#### **Hardware / Parts Included:**

1 Mesh Grille – Upper	12 #10 Flat Washers
1 Mesh Grille – Lower	8 2" Flange Brackets
8 6-32 Nylon Lock Nuts	
4 6-32 x 1 Studs (w/ Flange)	
4 6-32 Flange Nuts	

### **Read and understand instructions before attempting installation**

#### **Step 1**

Open the hood; test fit the billet grilles onto the vehicle. Remove 2 plastic fasteners in each corner on top of the grille. Remove the radiator cover; use a slotted screwdriver to depress the clips that secure it in place (1). Remove 3 Torx screws from behind the grille (one in the center and one on each end). Remove 6 additional Torx from behind the grille. Remove the factory grille; release the pressure clips from behind. Start at the top and continue to release them around to the bottom.



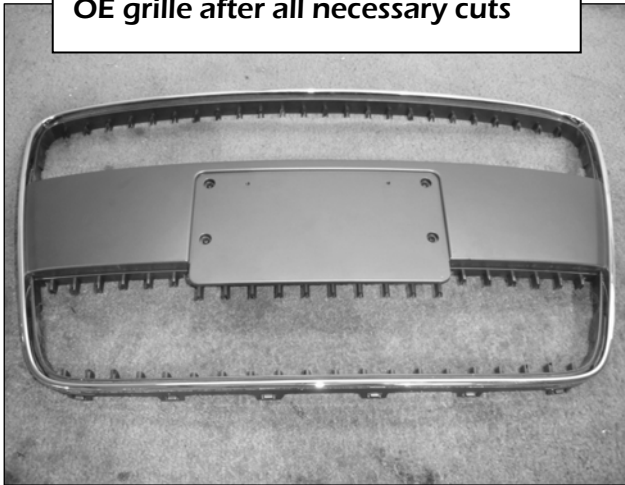
#### **Step 2**

Use a slotted screwdriver to release the Audi logo from the grille. Apply masking tape to the chrome or painted trim around the grille edge. Test fit the grilles into each opening; the mesh grilles rest against a small portion of the vertical bars left in each opening (after your cuts).

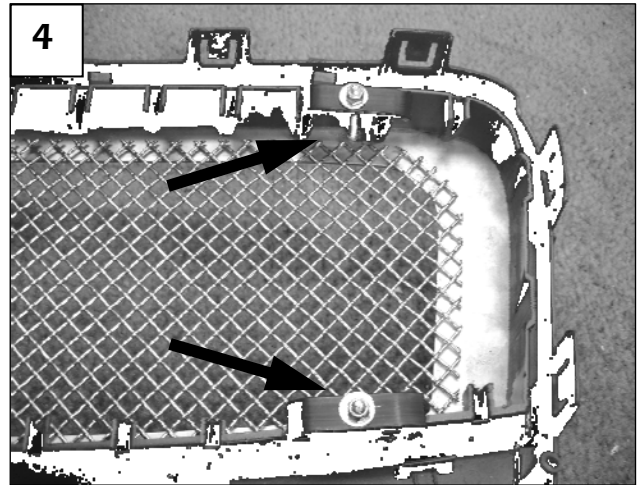
Make your first cuts to the vertical bars; cut each bar  $\frac{3}{4}$ " inside the outer edge (2 & 3). Cut the horizontal cross bars at the base of the bars (4). Cut the bars from each opening.

# 54989

OE grille after all necessary cuts



# 54989



### Step 3

Center each grille in place. Install a flange bracket, nut and washer onto the four mounting studs. Hold the flange brackets horizontally; tighten the hardware until the grille is held in place (4).



### Step 4

The factory Audi logo can be re-installed if desired. Cut the logo mounting tabs from the back of the logo (5). Center the logo in front of the grille; tape the logo in place. Mark four areas in line with the mesh openings then remove. Apply a large dab of epoxy to the flanged end of the provided studs. Install into the recess behind the logo; apply more epoxy if needed. Masking tape will help hold the studs in place (6). Allow to dry thoroughly. Install onto grille using the flange nuts provided.

### Step 5

Re-install grille assembly onto the vehicle. *Thank you for purchasing a T-Rex Billet Grille. 5/31/07*