

6729090
12-13 TOYOTA
HI LUX



6729090
12-13 TOYOTA
HI LUX

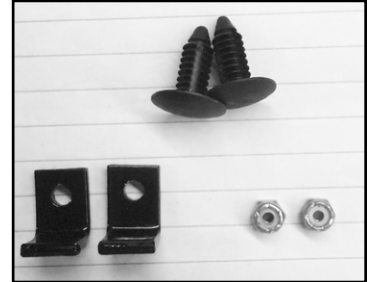
12-13 TOYOTA Hi Lux **X-Metal Bumper**

TOOLS REQUIRED:

Socket Set

PARTS LIST:

- (2) Christmas Tree Clips
- (2) 1/2" L Brackets
- (2) 6/32" Nylon Lock Nuts
- (1) X-Metal Bumper Mesh Grille



PLEASE READ AND UNDERSTAND ALL INSTRUCTIONS BEFORE INSTALLATION. Auto makers offer various models of each vehicle and occasionally manufacture more than one body style of the same model. To assure your part is correct; our tech department can be contacted at tech@trexbillet.com to verify fitment or assist with tech questions. All other inquiries can be directed to info@trexbillet.com. In the event you do not have internet access please call 1-800-287-5900.

Bumper Grille Installation

Step 1

Insert the two christmas tree clips into the two brackets on the bottom of the mesh grille (Fig 1).

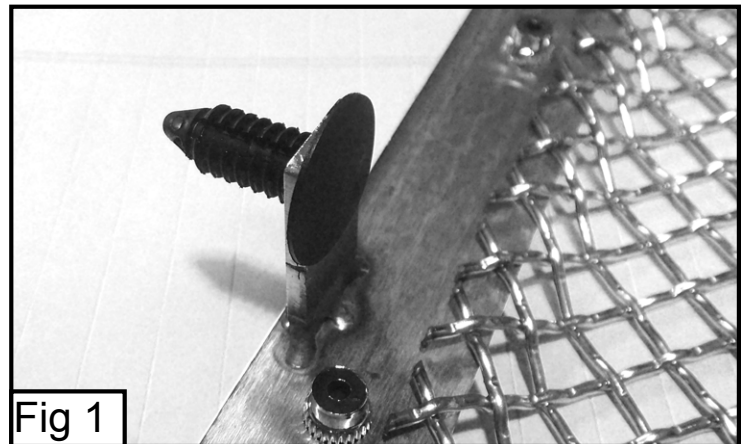


Fig 1

Step 2

Insert the mesh grille into the factory bumper opening, the side with the christmas tree clips goes towards the bottom (Fig 2).

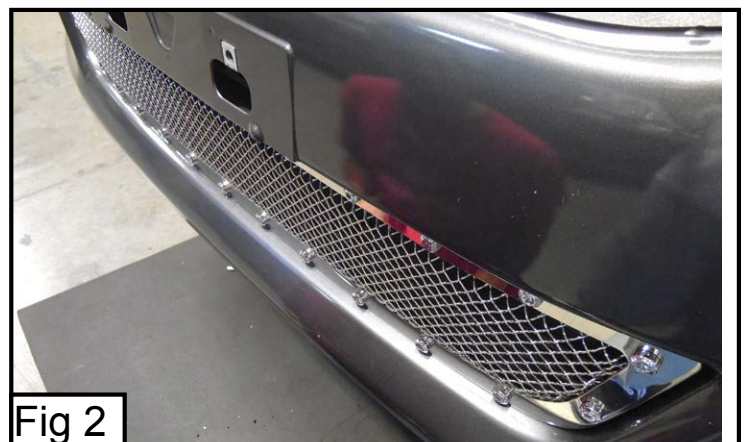


Fig 2

6729090
12-13 TOYOTA
HI LUX



6729090
12-13 TOYOTA
HI LUX

Step 3

From behind the bumper mesh grille make sure the christmas tree clips grab onto the bottom plastic bar in the factory bumper opening (Fig 3). Take the two L-brackets and slide them onto the threaded studs on the back of the mesh grille, the L-brackets latch onto the upper lip of the factory bumper opening. Install the two 6/32" nylon lock nuts onto the threaded studs and tighten (Fig 4).

Installation complete.

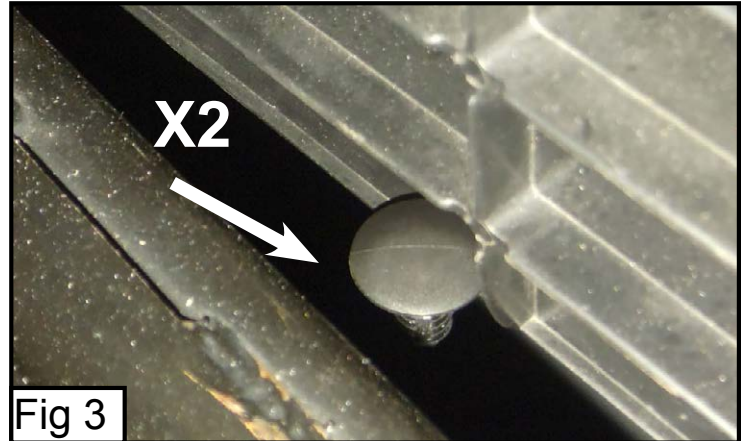


Fig 3

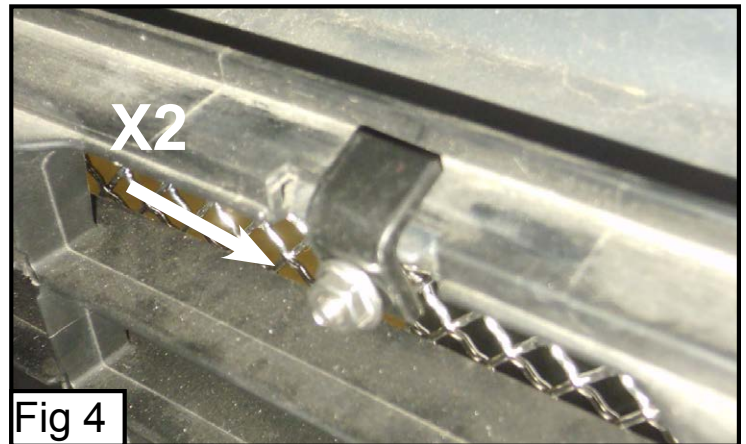


Fig 4