



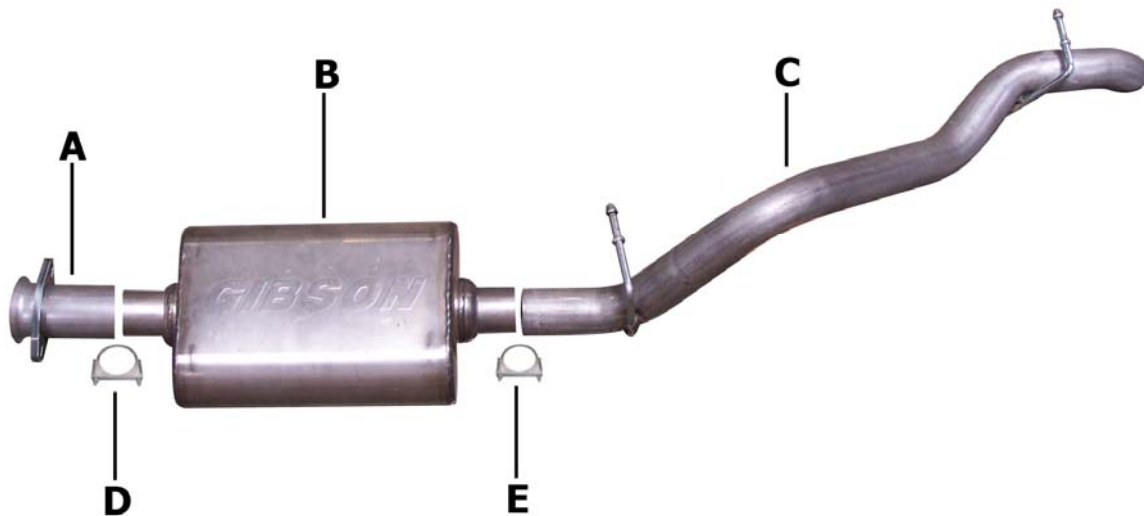
Installation Instructions

Cat-Back Single Exhaust

00-06 Jeep Wrangler, 2.5L-4.0L, 4wd

*Fits with Rubicon Express Long-Arm Lift Kit

Part #17304



ITEM	PART	QUANTITY	DESCRIPTION
A	700929	1	2.5" Headpipe
B	789808	1	Superflow CFT Muffler
C	700930	1	2.25" Over axle tailpipe w/ welded hanger
D	5757	1	2.5" Clamp
E	5756	1	2.25" Clamp
F	BO-1020	1	Bolt kit for headpipe

Thank you for purchasing our Gibson Exhaust System for your vehicle.
If you need further assistance, please do not hesitate to call our technical department at
(800) 528 -3044 Monday through Friday, 8am to 5 pm.

Installation Instructions #17304

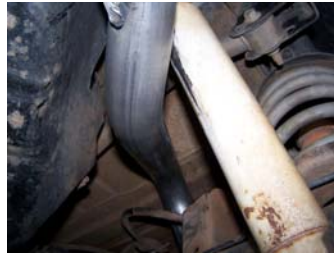
When installing this exhaust system make sure to use proper safety precautions. Use jack stands when working under the vehicle, set parking brake, block tires and use safety glasses and gloves. Allow exhaust to cool before attempting installation. Severe injury or burns could occur if safety measures are not taken.

SUGGESTED TOOLS: 1/2", 9/16", 15mm wrenches & sockets, WD-40, hacksaw, jack stands

1. Disconnect the negative battery cable before removal of OEM exhaust. This will allow the computer to reset and recognize the new exhaust. Lay out the exhaust on the floor so it looks like the drawing and compare parts with manual.



2. To remove the stock exhaust, unbolt the 2-bolt flange located in front of the muffler. Disengage the welded hangers from the OEM rubber grommets. Use WD-40 to aid in this process. Do not damage or remove the rubber grommets as you will reuse them to mount your new system. Now cut off tailpipe and remove exhaust.



6. Install the over axle tailpipe #C into the muffler 1.5-2". Use clamp #E to secure tailpipe to muffler. Insert welded hangers into rubber grommets.

3. Install headpipe #A onto your existing stock flange and secure with bolt kit #F. Do not tighten.



4. Install muffler #B onto headpipe #A 1.5-2" with the louvers facing towards the converter. Use a jack stand to support the muffler. Use clamp #D to secure the muffler to the headpipe. Do not tighten. Muffler inlet is looking into the louvers.



7. Adjust tailpipe to best fit your vehicle. Tighten all clamps and flanges working your way from the front to the back.

GIBSON EXHAUST systems are designed on a factory stock vehicle

Any aftermarket products installed could increase the sound levels of the exhaust.

Make sure there is a 1" clearance from ALL rubber brake lines, shock boots, lines, tires, etc. to prevent heat related damage or fire.