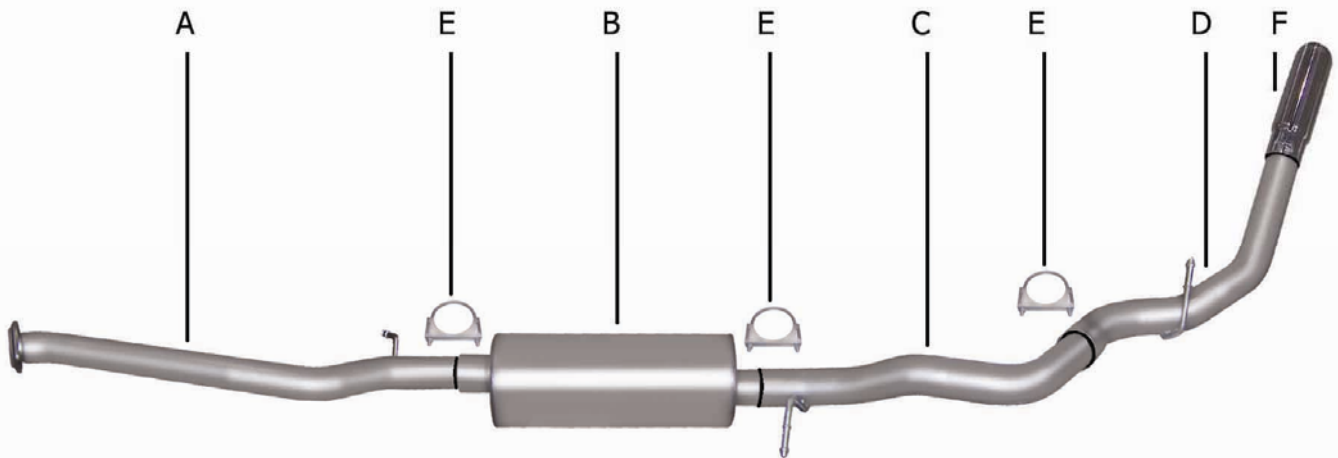




**INSTRUCTION MANUAL
CAT-BACK SINGLE EXHAUST
SILVERADO /SIERRA 1500 TRUCK
02-06 EXTENDED CAB, SHORT BED 4.3L, 4.8L, 5.3L 2/4WD
02-06 EXTENDED CAB, SHORT BED QUAD STEER 5.3L 2WD
04-06 CREW CAB, SHORT BED 1500 NON-HD 5.3L 2/4WD
PART # 315536**



ITEM	PART #	QTY	DESCRIPTION
A	700394	1	HEADPIPE WITH FLANGE #GP-115
B	788824	1	SUPERFLOW MUFFLER
C	700431	1	3" OVERAXLE TAILPIPE
D	700432	1	3" EXIT PIPE
E	OHD300	3	3" CLAMP
F	500360	1	3-1/2" STAINLESS TIP

Thank you for purchasing our GIBSON EXHAUST SYSTEM for your vehicle. If you need further assistance, please do not hesitate to call our Technical Department at 1-800-528-3044 Monday through Friday, 8:00 am to 5:00 pm. 0706

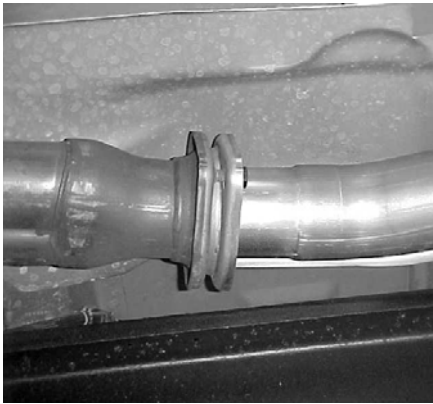
INSTALLATION INSTRUCTIONS#315536

WHEN INSTALLING THIS EXHAUST SYSTEM MAKE SURE TO USE ALL THE PROPER SAFETY PRECAUTIONS. USE JACK STANDS WHEN UNDER THE VEHICLE, SET THE PARKING BRAKE, BLOCK TIRES AND USE SAFETY GLASSES.
DO NOT WORK WITH HOT PIPES!!!

SUGGESTED TOOLS:

15MM SOCKET, 9/16" SOCKET, 1/2" WRENCH & SOCKET, JACKSTANDS, HACKSAW, WD-40

LAY OUT THE EXHAUST AND COMPARE THE PART NUMBERS TO THE MANUAL



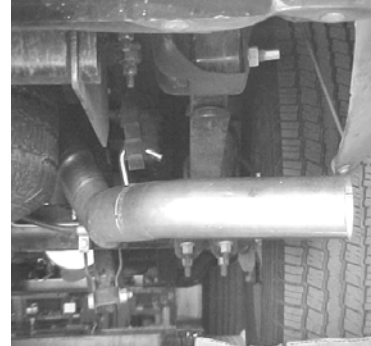
TO REMOVE STOCK EXHAUST UNBOLT THE STOCK EXHAUST AT THE FLANGE BEHIND THE Y-PIPE AND REMOVE. MAKE SURE TO LEAVE ALL RUBBER GROMMETS IN THE FACTORY LOCATION. **YOU WILL RE-USE STOCK NUTS AND BOLTS.** FOR EASIER REMOVAL OF EXHAUST, CUT BEHIND THE MUFFLER. USE WD-40 TO REMOVE HANGERS FROM GROMMETS.



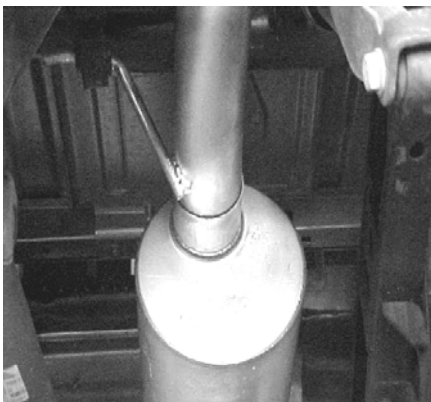
INSTALL OVERAXLE TAILPIPE #C INTO THE OUTLET OF THE MUFFLER 1 1/2" TO 2" USING CLAMP #E TO SECURE PIPE TO MUFFLER. INSERT WELDED HANGER INTO RUBBER GROMMET.



BOLT HEADPIPE #A TO THE STOCK FLANGE RE-USING THE FACTORY NUTS & BOLTS. INSERT WELDED HANGER INTO RUBBER GROMMET. DO NOT TIGHTEN.



INSTALL EXIT PIPE #D ONTO OVERAXLE TAILPIPE USING CLAMP# E TO SECURE. ROTATE EXIT PIPE UNTIL IT IS AT THE CORRECT ANGLE FOR YOUR TRUCK. INSERT WELDED HANGER INTO RUBBER GROMMET.



NEXT CONNECT THE MUFFLER TO THE HEADPIPE 1 1/2" TO 2" USING CLAMP #E. TO SECURE MUFFLER TO PIPE, USE JACKSTANDS TO SUPPORT THE MUFFLER. THE OUTLET OF THE MUFFLER WILL BE AT APPROXIMATELY 11 O'CLOCK. THE MUFFLER INLET IS LOOKING INTO THE LOUVERS. DO NOT TIGHTEN.



INSTALL THE STAINLESS STEEL TIP NOW, FIRMLY TIGHTEN EVERYTHING ALL CLAMP, HANGERS, BOLTS, FLANGE. TO CLEAN TIP USE ANY STAINLESS CLEANER WITH A SCOTCH BRITE PAD.

MAKE SURE YOU HAVE A 1" CLEARANCE FROM ALL BRAKE LINES, FUEL LINES, SHOCKS, TIRES, ETC.