



PERFORMANCE EXHAUST SYSTEMS

INSTRUCTION MANUAL

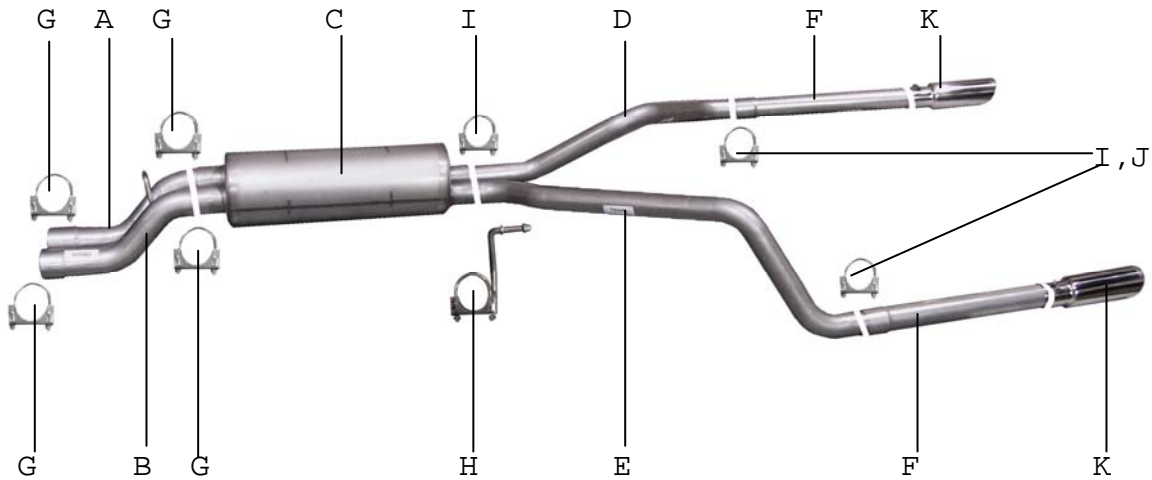
CAT-BACK SPLIT EXHAUST SYSTEM

01-05 SILVERADO 2500HD TRUCK 6.0L, 8.1L 2/4WD

EXTENDED CAB, LONG BED

CREW CAB, SHORT & LONG BED

PART #5558



ITEM	PART #	QTY.	DESCRIPTION
A	700444	1	3" PASSENGER SIDE HEADPIPE W/HANGER
B	700329	1	3" DRIVERSIDE HEADPIPE
C	766300	1	SUPERFLOW MUFFLER
D	700445	1	2- 1/2" PASSENGER SIDE TAILPIPE
E	700446	1	2 - 1/2" DRIVERSIDE TAILPIPE
F	700447	2	2- 1/2" EXIT PIPES
G	OHD300	4	3" CLAMP
H	4159	1	REAR MUFFLER HANGER
I	5757	3	2 1/2" CLAMP
J	4201	2	TAILPIPE HANGERS
L	ZIP	2	ZIP TIES
K	500374	2	STAINLESS TIPS

WILL NOT FIT WITH A FIFTH WHEEL TRAILER HITCH.

Thank you for purchasing our GIBSON EXHAUST SYSTEM for your Vehicle. If you need further assistance, please do not hesitate to call our Technical Department at (800) 528-3044, Monday through Friday, 8:00 am to 5:00 pm 1004

EXHAUST INSTALLATION #5558

When installing this exhaust system make sure to use proper safety precautions. Use jack stands when under the truck, set parking brake, block tires and use safety glasses and gloves.

DO NOT WORK WITH HOT PIPES!

SUGGESTED TOOLS:

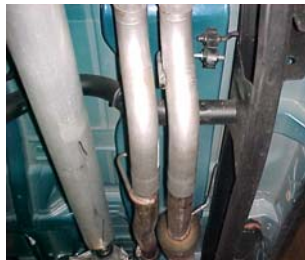
1/2" ,9/16", 15mm wrench and socket, Wd-40, Hacksaw, Jack Stand



Lay out the exhaust on the floor so it looks like the drawing and compare parts with manual. **To remove the stock exhaust cut 13" just in front of the muffler.** Leave all rubber grommets in place. Use WD-40 to aid in removal of exhaust and hangers. Use hacksaw to cut tailpipe off.



Install passenger side overaxle tailpipe #D into muffler 1 1/2" to 2". Long end of pipe goes into muffler. Secure with clamp #I. Do not tighten.



Install driverside headpipe #B. Then install headpipe #A and then Insert welded hanger into rubber grommet Secure both pipes with clamp #G. Do not tighten.



Install tailpipe hangers #J onto end of tailpipes using clamp #I. There will be about a 2" hole above the end of both tailpipes on the frame to bolt the hangers. Do not tighten.



Install muffler # C onto head pipes 1-1/2" to 2" with the louvers facing towards the converter. Use a jack stand to support the muffler. Use clamps #G to secure the muffler to the head pipes. Do not tighten. Outlets will be on the bottom.



Install exit pipes #F Use clamps # I to secure exit pipes to tailpipes. These clamps also attach to the metal hangers. You will need to rotate in order to adjust for clamping.



Next, install rear muffler hanger #H onto drivers side muffler outlet insert hanger into rubber grommet. Do not tighten.



Now go back and tighten all clamps, nuts and bolts. Start from the front and work back.



Install driverside overaxle tailpipe #E into muffler 1 1/2" to 2". Long end of pipe goes into the muffler. Support end of tailpipe with stand, and attach with hanger # H.



Install stainless tips.

MAKE SURE YOU HAVE A 1" CLEARANCE FROM ALL BRAKE LINES, SHOCK BOOTS, TIRES, FUEL LINES, ETC...