



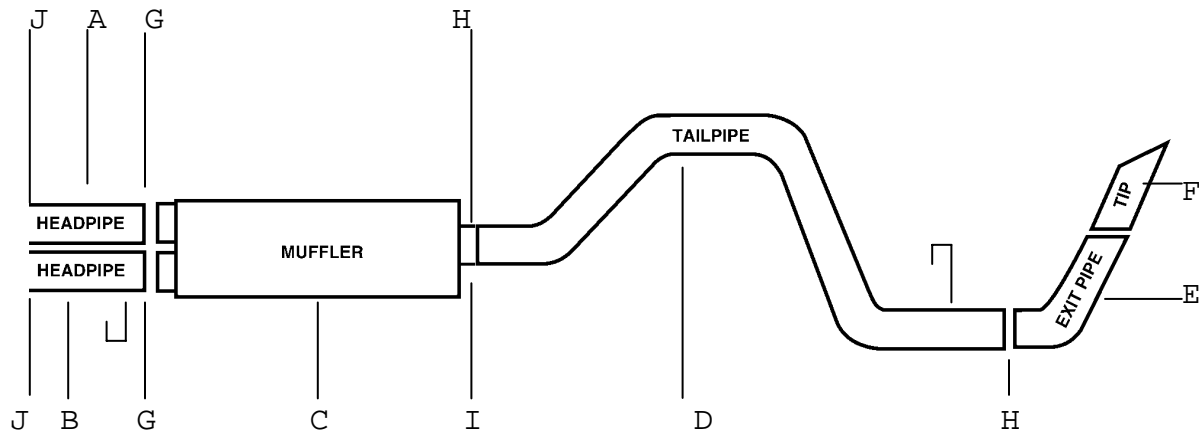
INSTRUCTION MANUAL

CAT-BACK STAINLESS SINGLE EXHAUST

96-00 CHEVY TRUCK 5.7LHD, 7.4L 2/4WD

CREW CAB, LONG BED

PART # 615511



ITEM	PART #	QUANTITY	DESCRIPTION
A	163-500411S	1	2-1/2" S/S PASSENGER SIDE HEADPIPE
B	164-500412S	1	2-1/2" S/S DRIVER SIDE HEADPIPE
C	758250S	1	S/S SUPERFLOW MUFFLER
D	165-500628S	1	3" S/S OVERAXLE TAILPIPE
E	154-50032RS-2	1	3" S/S TURNOUT PIPE
F	500360	1	3-1/2" STAINLESS STEEL TIP
G	5757	2	2-1/2" CLAMP
H	OHD300	2	3" CLAMP
I	500569	1	O.E. REAR MUFFLER HANGER
J	5758	2	2-3/4" CLAMP

Thank you for purchasing our GIBSON EXHAUST SYSTEM for your vehicle. If you need further assistance, please do not hesitate to call our Technical Department at (800) 528-3044, Monday through Friday, 8:00 am to 5:00 pm 0903

EXHAUST INSTALLATION #615511

STOCK DUAL INLET MUFFLER

WHEN INSTALLING THIS EXHAUST SYSTEM, MAKE SURE TO USE PROPER SAFETY PRECAUTIONS. USE JACK STANDS WHEN UNDER TRUCK, SET PARKING BRAKE, BLOCK TIRES, AND USE SAFETY GLASSES AND GLOVES. DO NOT WORK WITH HOT PIPES!

SUGGESTED TOOLS:

HACKSAW, JACK STAND, 9/16" SOCKET, 1/2" SOCKET, 1/2" WRENCH, WD-40

- *Lay out the EXHAUST so it looks like the drawing and compare part numbers.*



CUT YOUR STOCK HEADPIPES 17" IN FRONT OF STOCK MUFFLER USING A HACKSAW AND REMOVE STOCK EXHAUST SYSTEM. LEAVE FACTORY RUBBER GROMMETS IN PLACE.

INSTALL HEADPIPES #A,B NO MORE THAN 1-1/2" TO 2" OVER STOCK HEADPIPES. INSERT DRIVERSIDE WELDED HANGER INTO RUBBER GROMMET. CONNECT HEADPIPE USING CLAMPS #J TO STOCK HEADPIPES. DO NOT TIGHTEN.



INSTALL OVERAXLE TAILPIPE #D INTO REAR OF MUFFLER NO MORE THAN 1 1/2" TO 2". INSERT WELDED HANGER INTO RUBBER GROMMET. DO NOT TIGHTEN. USE CLAMP #H TO ATTACH TO MUFFLER.



INSTALL MUFFLER ONTO HEADPIPES NO MORE THAN 1 1/2" TO 2" USING CLAMPS #G. USE A JACKSTAND TO SUPPORT MUFFLER.

INSTALL REAR HANGER #I ONTO OUTLET OF MUFFLER AND INSERT WELDED HANGER INTO RUBBER GROMMET. DO NOT TIGHTEN. MUFFLER OUTLET IS AT 12 O'CLOCK.



INSERT TURNOUT PIPE #E ONTO TAILPIPE AND ROTATE FOR YOUR DESIRED LOOK. USE CLAMP #H TO CONNECT TAILPIPE AND TURNOUT PIPE TOGETHER. DO NOT TIGHTEN.



INSTALL STAINLESS STEEL TIP. TO CLEAN YOUR TIP USE ANY STAINLESS OR ALUMINUM CLEANER. TIGHTEN ALL CLAMPS, HANGERS AND CHECK FOR LEAKS.

MAKE SURE YOU HAVE A 1" CLEARANCE ON ALL PIPES FROM ALL RUBBER BRAKE LINES, FUEL LINES, SHOCK BOOTS, TIRES, ETC.