

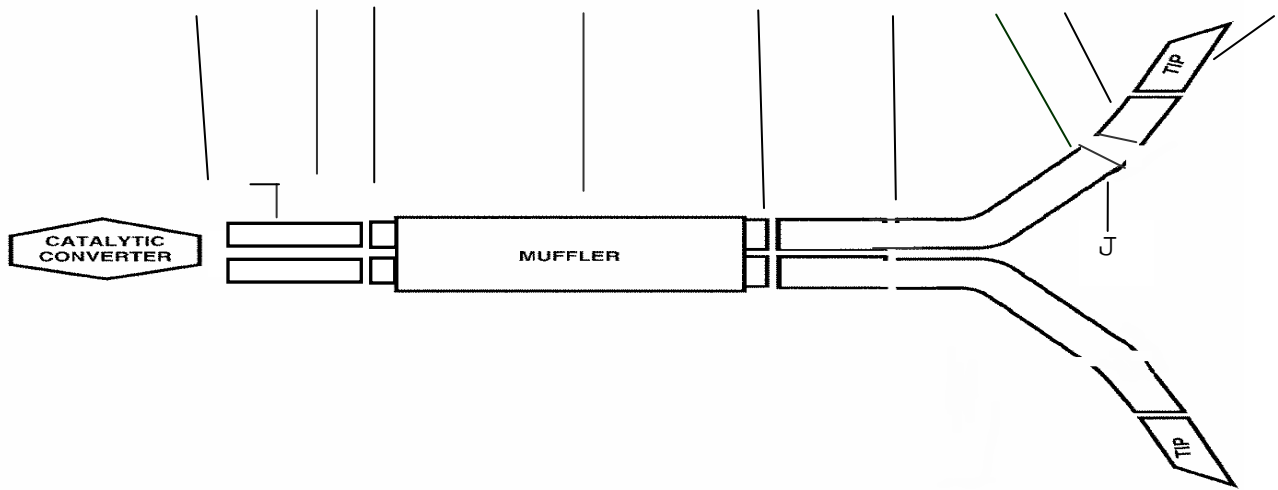
INSTRUCTION MANUAL

STAINLESS CAT-BACK DUAL EXTREME EXHAUST

2004 SILVERADO/ SIERRA TRUCK 2500 6.0L 2/4WD

CREW CAB, SHORT BED

PART # 65017



H A G C I D I F K
H B G I E I F K

| ITEM | PART # | QUANTITY | DESCRIPTION |
|------|--------|----------|-------------|
|------|--------|----------|-------------|

| | | | |
|---|-------------|---|---------------------------------------|
| A | 872-700621S | 1 | 3" S.S PASS SIDE HEADPIPE WITH HANGER |
| B | 873-700622S | 1 | 3" S.S DRIVERSIDE HEADPIPE |
| C | 766300S | 1 | STAINLESS SUPERFLOW MUFFLER |
| D | 876-700627S | 1 | 2-½" S.S PASS SIDE OVERAXLE TAILPIPE |
| E | 877-700628S | 1 | 2-½" S.S DRIVERSIDE OVERAXLE TAILPIPE |
| F | 571-700448S | 2 | 2-½" STAINLESS EXIT PIPE |
| G | OHD300 | 2 | 3" CLAMP |
| H | 5758 | 2 | 2-¾" CLAMP |
| I | 5757 | 4 | 2 -½" CLAMP |

J 4231
K 500374

2 TAILPIPE HANGERS
2 3 1/2" STAINLESS STEEL TIPS

WILL NOT FIT WITH A FIFTH WHEEL TRAILER HITCH & Heavy Duty Truck
Thank you for purchasing our Gibson exhaust system for your vehicle. If you need further assistance, please do not hesitate to call our technical dept at (800) 528-3044 Monday through Friday, 8:00 am to 5:00 pm. 1104

EXHAUST INSTALLATION #65017

When installing this exhaust system make sure to use proper safety precautions. Use jack stands when under the truck, set parking brake, block tires and use safety glasses and gloves.

DO NOT WORK WITH HOT PIPES!

SUGGESTED TOOLS:

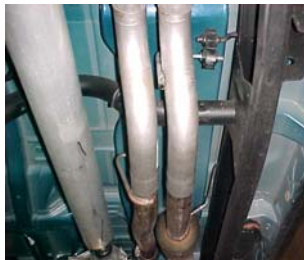
1/2", 9/16", 15mm wrench and socket, Wd-40, Hacksaw, Jack Stand



Lay out the exhaust on the floor so it looks like the drawing and compare parts with manual. **To remove the stock exhaust cut 13" just in front of the muffler.** Leave all rubber grommets in place. Use WD-40 to aid in removal of exhaust and hangers. Use hacksaw to cut tailpipe off.



Install driverside overaxle tailpipe #E into muffler 1 1/2" to 2". Use clamp #I to secure pipe to muffler. Do not tighten. Next, insert welded hanger into rubber grommet. Rotate pipe until it connects to rear hanger #J. Attach clamp #I to pipe.



Install driverside headpipe #B. Then install headpipe #A and insert welded hanger into rubber grommet. Secure both pipes with clamp #H. Do not tighten.



Install passenger side overaxle tailpipe #D into muffler 1 1/2" to 2". Secure to muffler with clamp #I. Do not tighten. Next rotate pipe until it connects to rear hanger #J. Use clamp #J to hold up pipe.



Install muffler# C onto head pipes 1-1/2" to 2" with the louvers facing towards the converter. Use a jack stand to support the muffler. Use clamps #G to secure the muffler to the head pipes. Do not tighten



Install exit pipes #F. Use clamps #I to attach to tailpipes. These clamps also attach to the metal hangers # J. Rotate to adjust for clamping. Now go back and tighten up all clamps, nuts, and bolts.

Install tailpipe hangers #J onto end of tailpipes using clamp #I. There will be about a 2" hole above the end of both tailpipes on the frame to bolt the hangers. Do not tighten.

Then install stainless steel tips and tighten.



MAKE SURE YOU HAVE A 1" CLEARANCE FROM ALL BRAKE LINES, SHOCK BOOTS, TIRES, FUEL LINES, ETC...