

Instructions Created by an:



**Automotive
Service
Excellence**
MASTER AUTO TECHNICIAN



2007-2015 Toyota Tundra | 2008-2015 Sequoia Differential Drop Kit by Low Range Off-Road (SKU# LR-TUNDDK)



CAUTION: Safety glasses should be worn at all times when working with vehicles and related tools and equipment.



For additional copies of these and other instructions go to:
www.lowrangeoffroad.com and click on the "Instructions" tab.

Suggested Tools:

- Twin Post Lift (or Floor Jack)
- Transmission Jack (or 2 Jack Stands)
- Ratchet
- Sockets: 10 & 19mm
- Combination Wrench: 19mm
- 1/2 Dr. Torque Wrench: up to 150 ft. lbs.
- Impact wrench, 1/2 Drive



General Note

The photographs for these instructions were taken with the vehicle placed on a twin post lift. This allowed for clearer pictures and better instructions. However, this job could also be done with a floor jack and two jack stands.

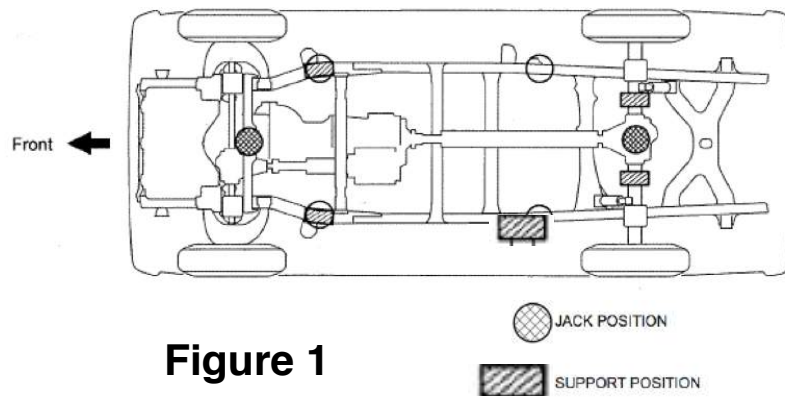
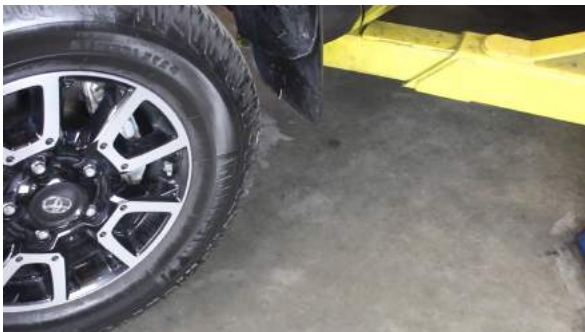


Figure 1



Step 1

Place the vehicle on a twin post lift. Be sure it is positioned according to the lift manufacturer's operator instructions and the vehicle manufacturer's specified lift points. (See Figure 1)



Removing the Belly Pan



Step 2

Remove the (3) bumper apron screws using a 10 mm socket.

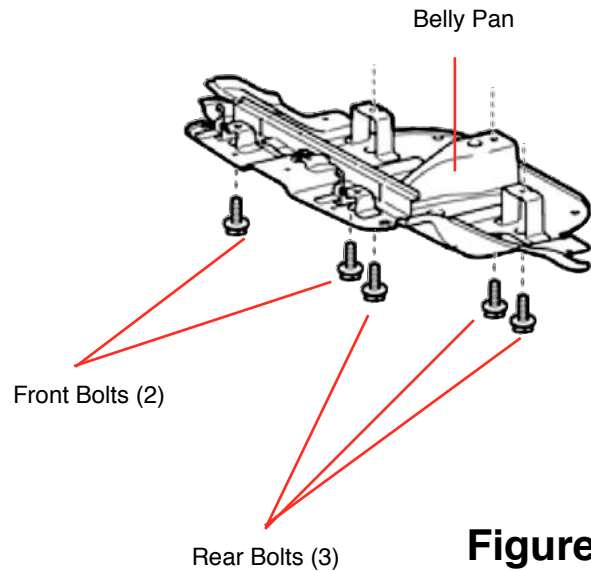


Figure 2



Step 4

Remove the (3) rear belly pan bolts using a 12 mm socket.

Step 3

Remove the (2) front belly pan bolts (See Figure 2) using a 12mm socket.

Note: Keep these bolts, they ***WILL*** be reused later.

Differential Mount Parts Identification

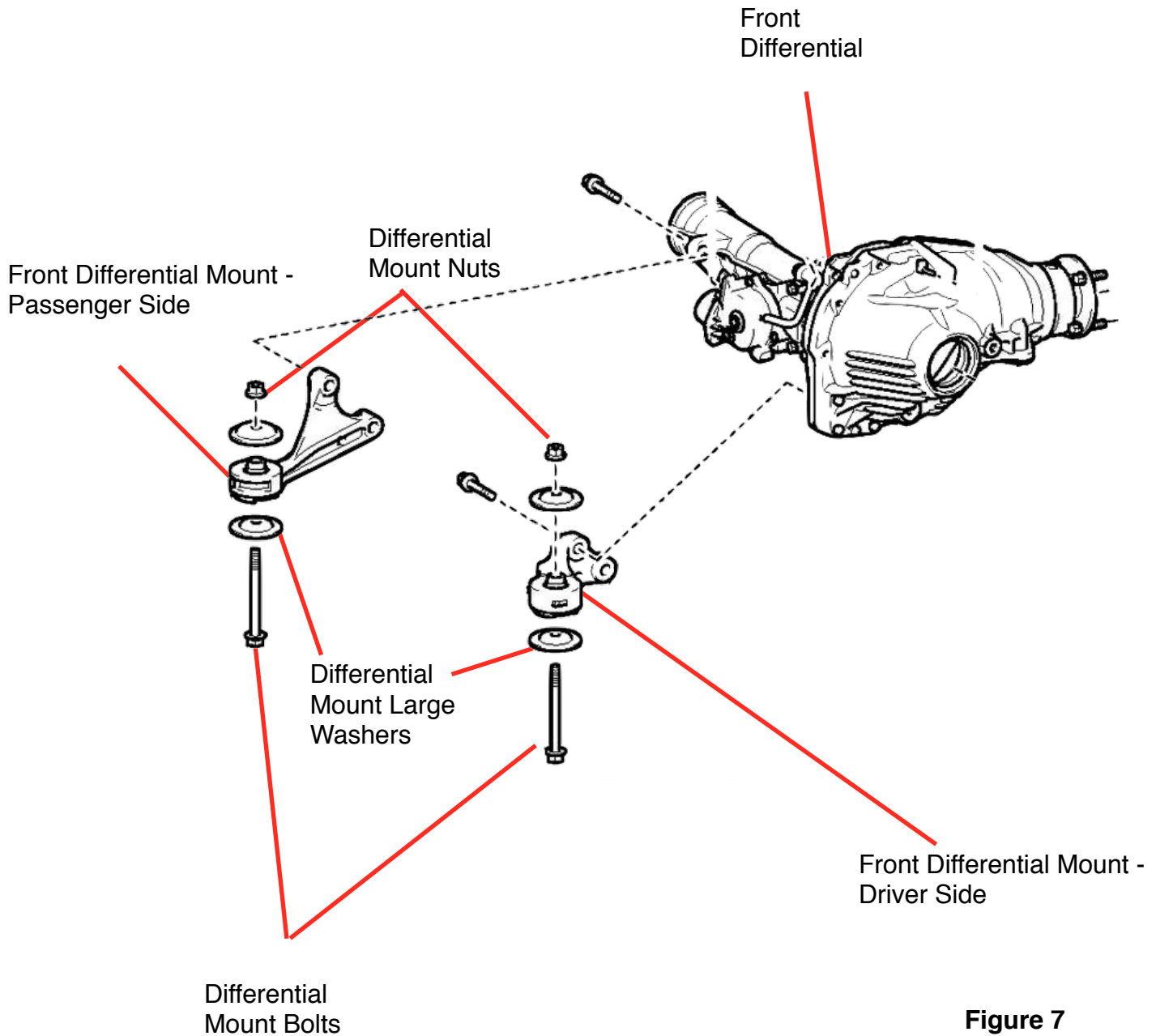


Figure 7



Installing the Differential Drop Spacers



Step 5

Place the under hoist jack stand under the front differential and raise slightly.

Step 6

Hold this nut located on top of the crossmember on the passenger side (See Figure 7), using a 19mm box end wrench.

Note: It is located close to the rack and pinion steering unit.



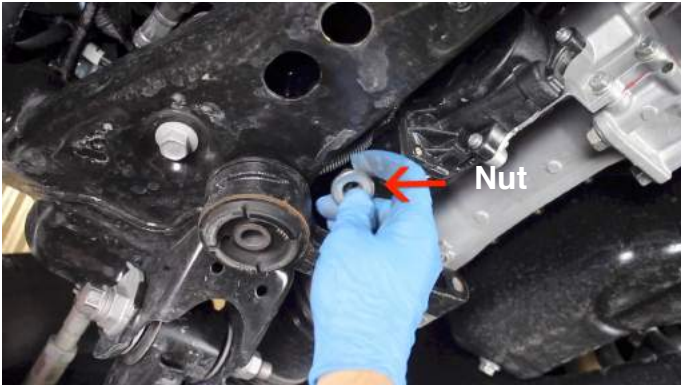
Step 7

While holding the nut shown in the previous step, loosen the bolt using a 19mm socket.

Step 8

Remove the bolt and large washer.





Step 9

Then remove the nut from above the cross member.



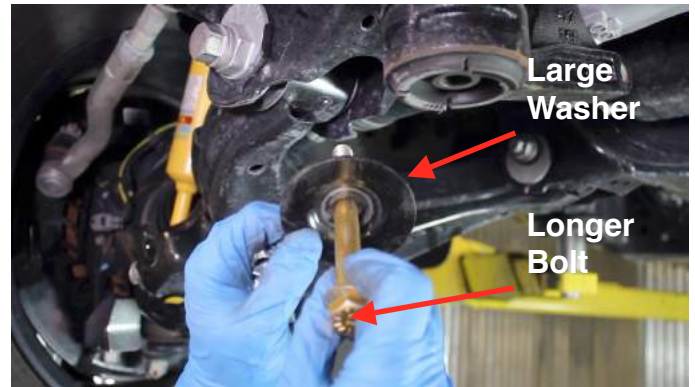
Step 10

Remove the bolt, larger washer and nut from the driver side differential mount.



Step 11

Lower the differential about two inches by lowering the under hoist jack stand.



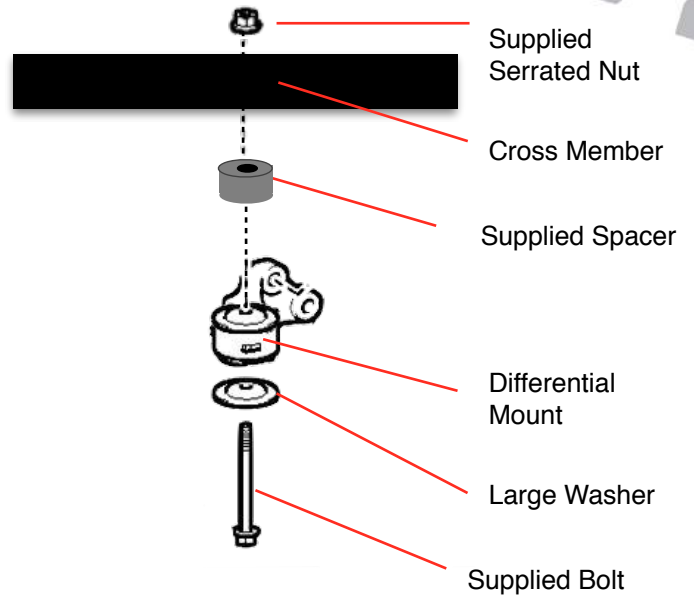
Step 12

Install the original large washers on one of the supplied (longer) bolts.



Step 13

Place one of the supplied differential drop spacers between the bracket and the cross member and install the bolt up through the bracket, the spacer and the cross member.



Tech Tip 14

Differential Drop Spacer Assembly Placement



Step 15

Start a supplied serrated flange nut on the top of the bolt. Leave the nut loose for now.



Step 16

Install the driver side supplied bolt, large washer, spacer and serrated nut by repeating the steps shown on the passenger side





Step 17

Tighten the driver side differential mount bolt to 89 ft. lbs.

Note: It is not necessary to hold the nut on top because it is a serrated flange nut.

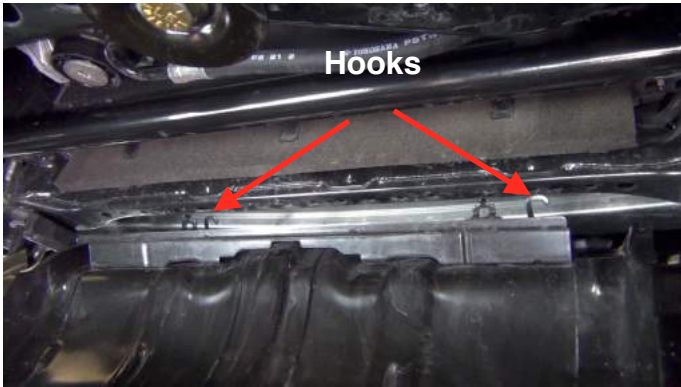


Step 18

Tighten the passenger side differential mount bolt to 89 ft. lbs.



Installing the Belly Pan

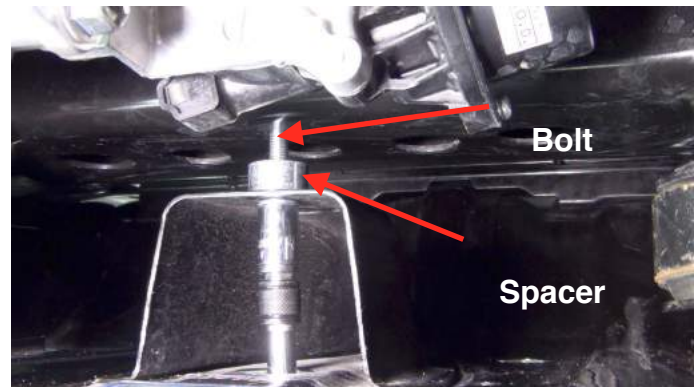
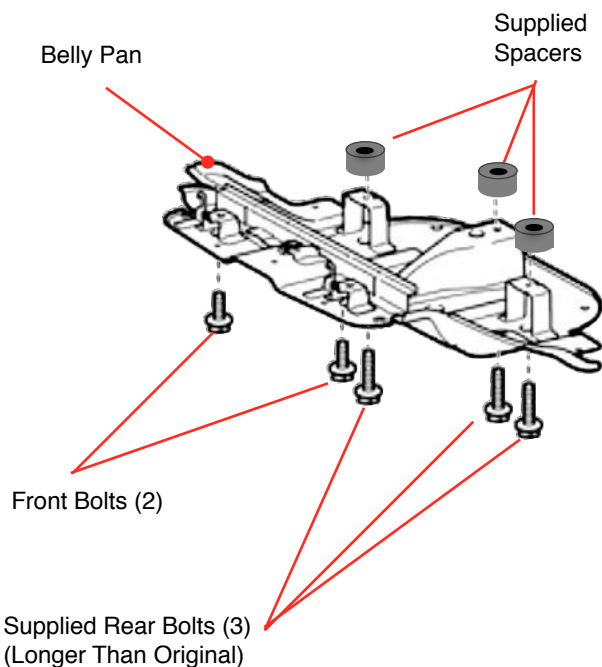


Step 19

Attach the front of the belly pan by attaching the (2) hooks in the front.

Step 20

Start the (2) original bolts in the front of the pan but leave them loose for now.



Step 22

The rear of the belly pan is attached in 3 locations. Starting on the passenger side place a supplied spacer on top of the pan and start one of the supplied (longer) bolts. Leave it loose for now. Then install the other (2) supplied spacers and bolts leaving them loose as well.

Tech Tip 21

Belly pan spacer positioning.

Recommendation: You may want to apply some [RTV Silicone Gasket Maker](#) to the bottom of the spacers to keep them from getting lost during oil changes.





Step 23

Once all 5 belly pan bolts are in place and started, tighten them to an estimated 4 ft. lbs.

Note: These bolts could be torqued, but most torque wrenches will not go that low. If an inch pound torque wrench is available, these bolts should be torqued to 48 in. lbs.



Congratulations!!!

You have finished the front differential and skid plate drop. It is wise to double check all the fasteners to insure you have not overlooked any of them. We hope these instructions have been helpful. Please feel free to contact us with any questions or concerns you may have.



As always, If you experience any difficulty during the installation of this product please contact Low Range Off-Road Technical Support at 801-805-6644 M-F 8:00am-5:00pm MST. Thank you for purchasing from Low Range Off-Road.



These instructions are designed as a general installation guide. Installation of many Low Range Off-Road products require specialized skills such as metal fabrication, welding and mechanical trouble shooting. If you have any questions or are unsure about how to proceed, please contact our shop at 801-805-6644 or seek help from a competent fabricator. Using fabrication tools such as welders, torches and grinders can cause serious bodily harm and death. Please operate equipment carefully and observe proper safety procedures.

Rock crawling and off-road driving are inherently dangerous activities. Some modifications will adversely affect the on-road handling characteristics of your vehicle. All products sold by Low Range Off-Road are sold for off road use only. Any other use or application is the responsibility of the purchaser and/or user. Some modifications and installation of certain aftermarket parts may under certain circumstances void your original dealer warranty. Modification of your vehicle may create dangerous conditions, which could cause roll-overs resulting in serious bodily injury or death. Buyers and users of these products hereby expressly assume all risks associated with any such modifications and use.

Created 12/4/17© Copyright 2017 Low Range Off-Road, LC All Rights Reserved

